

F A B E R
R E S I D E N C E





THE CENTRE OF ALL YOU NEED

CONNECTIVITY

- Jurong Town Hall^A MRT Station (U/C) - 10-min walk
- Clementi MRT Station - 4 bus stops away
- Jurong East MRT Station - 4 bus stops away
- Ayer Rajah Expressway (AYE) - 7-min drive
- Pan Island Expressway (PIE) - 12-min drive

BUSINESS

- International Business Park - 5-min walk
- Jurong Lake District one-north - 5-min drive
- Singapore Science Park I - 9-min drive
- Singapore Science Park II - 10-min drive
- 14-min drive

EDUCATION

- Nan Hua Primary School (within 1km*) - 3-min drive
- Japanese Kindergarten - 6-min drive
- Qifa Primary School - 7-min drive
- Clementi Town Secondary School - 7-min drive
- Singapore Polytechnic - 7-min drive
- National University of Singapore - 7-min drive
- School of Science and Technology, Singapore - 7-min drive
- NUS High School of Mathematics and Science - 7-min drive
- The Japanese Secondary School - 7-min drive
- Nan Hua High School - 8-min drive
- Clementi Primary School - 8-min drive
- Pei Tong Primary School - 8-min drive
- Bukit Timah Primary School - 8-min drive
- Commonwealth Secondary School - 8-min drive
- International Community School - 8-min drive
- SIM HQ - 9-min drive
- Anglo-Chinese Junior College - 9-min drive

- Fairfield Methodist School (Primary and Secondary) - 9-min drive
- Ngee Ann Polytechnic - 11-min drive

SHOPPING / DINING

- Jovis Cafe - 9-min walk
- The Clementi Mall - 6-min drive
- Westgate - 7-min drive
- Jem - 7-min drive
- IMM - 7-min drive
- West Coast Plaza - 8-min drive
- Bukit Timah Plaza - 11-min drive
- One Holland Village - 12-min drive

NATURE / LEISURE

- Ulu Pandan Park Connector - 1-min walk
- Future Old Jurong Line Nature Trail - 2-min walk
- Pandan Reservoir - 8-min drive
- Chinese Garden - 13-min drive
- Japanese Garden - 13-min drive
- Jurong Lake Gardens - 15-min drive

RECREATION

- Clementi Sports Hall / Centre - 6-min drive
- Clementi Swimming Complex - 7-min drive
- Clementi Stadium - 9-min drive
- New Science Centre (U/C) - 9-min drive
- Jurong East Sports & Recreation Centre - 12-min drive

HEALTHCARE

- Ng Teng Fong General Hospital - 6-min drive
- National University Hospital - 9-min drive
- Clementi Polyclinic - 10-min drive

LEGEND

- Jurong Region Line (U/C)
- East-West Line
- North-South Line
- Circle Line
- Downtown Line
- Thomson-East Coast Line
- North East Line
- Cross Island Line (U/C)
- Park Connector Network and Nature Trails

The estimated travel time is based on Google Maps. Distance is covered based on the linear distance on OneMap. Map is for illustration purposes only and not drawn to scale, updated as at 18 September 2025. Colour demarcation of zones is a general guide only, based on reference from OneMap, URA and JTC.

*The statement is based on the appointed surveyor's measurements and information from OneMap as at 18 March 2025 and is not to be relied upon as statements or representations of fact, offers or warranties (whether expressly or impliedly) by Faber Residence Pte. Ltd. (the "Developer", being the developer of Faber Residence) or its agents. The actual Home-School Distance and eligibility for priority admission for Primary 1 registration will be determined by MOE and/or SLA during registration, and intending purchasers should, if they wish, seek confirmation from MOE and/or SLA on the accuracy, reliability or completeness of the statement. Neither the Developer nor its agents shall be held responsible and/or liable for any damage or loss (whether directly or indirectly) suffered by any person due to any inaccuracies, omissions, errors, the completeness of the statement or any reliance placed on such statement.

0m 1000m

^AWorking name

SITE PLAN

LEGEND:

1. ARRIVAL COURTYARD

- 1a. Lobby
- 1b. Reading Room

2. COMMUNITY COURTYARD

- 2a. Herb Garden
- 2b. Social Pavilion
- 2c. Social Court

3. BOTANICAL COURTYARD

- 3a. Garden Court
- 3b. Floral Garden
- 3c. Verdant Lawn

4. LILY COURTYARD

- 4a. Lily Pond
- 4b. Spring Fountain
- 4c. Water Court

5. ALCOVE COURTYARD

- 5a. Breeze Walk
- 5b. Swing Alcove
- 5c. Breeze Lawn

6. WELLNESS COURTYARD

- 6a. Reflexology Walk
- 6b. Taichi Court
- 6c. Wellness Sanctuary

7. FITNESS COURTYARD

- 7a. Momentum Plaza
- 7b. Yoga Lawn
- 7c. Indoor Gym
- 7d. Multi-purpose Court (Basement)
- 7e. Pavilion 1

8. CLUB COURTYARD

- 8a. Club Dining 1
- 8b. Club Dining 2
- 8c. Changing Room
- 8d. Steam Room
- 8e. Plaza Court
- 8f. Club Lawn

9. RESORT COURTYARD

- 9a. Sunken Alcove
- 9b. Leisure Pool (25m)
- 9c. Jacuzzi
- 9d. Sun Deck
- 9e. Water Deck 1

10. POOL COURTYARD

- 10a. Lap Pool (50m)
- 10b. Pool Deck
- 10c. Meadow Lawn

11. LEISURE COURTYARD

- 11a. Wading Pool
- 11b. Water Deck 2
- 11c. Leisure Pavilion
- 11d. Retreat Lawn
- 11e. Pavilion 2

12. DINING COURTYARD

- 12a. Dining Pavilion 1
- 12b. Dining Pavilion 2

13-18. LOBBY COURTYARD

- 19. Playground
- 20. Outdoor Fitness
- 21. Lookout Terrace
- 22. Waterside Trail
- 23. Dry Garden (Basement)
- 24. Grand Drop-off (Basement)
- 25. Substation (Basement)
- 26. Bin Centre (Basement)
- 27. Genset (Basement)
- 28. Guard House
- 29. Management Office (Basement)
- 30. Bicycle Parking (Basement)
- 31. On-Grade Bicycle Parking
- 32. Side Gate

 Water Tank (Roof)



0 10 20 30 40 50 METERS



UNIT DISTRIBUTION CHART

LEGEND

- Type B1, B2 & B3
2-Bedroom
- Type C1, C2, C3 & C4
3-Bedroom (Basic)
- Type C5, C6 & C7
3-Bedroom (Standard)
- Type C8, C9, C10 & C11
3-Bedroom (Plus)
- Type D1, D2 & D3
4-Bedroom (Basic)
- Type D4, D5, D6, D7 & D8
4-Bedroom (Standard)
- Type E1
5-Bedroom (Standard)

BLOCK 54

UNIT/ FLOOR	1	2	3	4	5	6	7	8	9
5	B3	C9	C10	C5	C5	C3	C11	B1	C2
4	B3	C9	C10	C5	C5	C3	C11	B1	C2
3	B3	C9	C10	C5	C5	C3	C11	B1	C2
2	B3	C9	C10				C11	B1	C2
1	B3-G	C9-G	C10-G				C11-G	B1-G	C2-G
B1	RESIDENTIAL CARPARK								

BLOCK 56

UNIT/ FLOOR	10	11	12	13	14	15	16	17	18
5	C2	B1	C11	D3	C5	C5	D8	C4	B3
4	C2	B1	C11	D3	C5	C5	D8	C4	B3
3	C2	B1	C11	D3	C5	C5	D8	C4	B3
2	C2	B1	C11	D3	C5	C5	D8	C4	B3
1	C2-G	B1-G	C11-G	D3-G	C5-G	C5-G	D8-G	C4-G	B3-G
B1	RESIDENTIAL CARPARK								

BLOCK 58

UNIT/ FLOOR	19	20	21	22	23	24	25	26	27	28
5	B3	C3	C9	B3	B2	C1	D2	C11	C1	B1
4	B3	C3	C9	B3	B2	C1	D2	C11	C1	B1
3	B3	C3	C9	B3	B2	C1	D2	C11	C1	B1
2	B3	C3	C9	B3	B2	C1	D2	C11	C1	B1
1	B3-G	C3-G	C9-G	B3-G	B2-G	C1-G	D2-G	C11-G	C1-G	B1-G
B1	RESIDENTIAL CARPARK									

BLOCK 60

UNIT/ FLOOR	29	30	31	32	33	34	35	36	37	38
5	B3	D6	D6	B3	B2	C1	C4	C11	C5	B1
4	B3	D6	D6	B3	B2	C1	C4	C11	C5	B1
3	B3	D6	D6	B3	B2	C1	C4	C11	C5	B1
2	B3	D6	D6	B3	B2	C1	C4	C11	C5	B1
1	B3-G	D6-G	D6-G	B3-G	B2-G	C1-G	C4-G	C11-G	C5-G	B1-G
B1	RESIDENTIAL CARPARK									

BLOCK 62

UNIT/ FLOOR	39	40	41	42	43	44	45	46	47
5	B3	D1	D3	C5	D4	C8	D2	B1	C6
4	B3	D1	D3	C5	D4	C8	D2	B1	C6
3	B3	D1	D3	C5	D4	C8	D2	B1	C6
2	B3	D1	D3	C5	D4	C8	D2	B1	C6
1	B3-G	D1-G	D3-G	C5-G	D4-G	C8-G	D2-G	B1-G	C6-G
B1	RESIDENTIAL CARPARK								

BLOCK 64

UNIT/ FLOOR	48	49	50	51	52	53	54	55	56
5	C1	D7	D2	C1	C1	C3	D8	B1	C2
4	C1	D7	D2	C1	C1	C3	D8	B1	C2
3	C1	D7	D2	C1	C1	C3	D8	B1	C2
2	C1	D7	D2	C1	C1	C3	D8	B1	C2
1	C1-G	D7-G	D2-G	C1-G	C1-G	C3-G	D8-G	B1-G	C2-G
B1	RESIDENTIAL CARPARK								

BLOCK 66

UNIT/ FLOOR	57	58	59	60	61	62	63	64
5	C5	C10	D7	D4	C2	E1	E1	C7
4	C5	C10	D7	D4	C2	E1	E1	C7
3	C5	C10	D7	D4	C2	E1	E1	C7
2	C5	C10	D7	D4	C2	E1	E1	C7
1	C5-G	C10-G	D7-G	D4-G	C2-G	E1-G	E1-G	C7-G
B1	RESIDENTIAL CARPARK							

BLOCK 68

UNIT/ FLOOR	65	66	67	68	69	70	71	72
5	D5	E1	E1	C2	C5	D2	D8	D5
4	D5	E1	E1	C2	C5	D2	D8	D5
3	D5	E1	E1	C2	C5	D2	D8	D5
2	D5	E1	E1	C2	C5	D2	D8	D5
1	D5-G	E1-G	E1-G	C2-G	C5-G	D2-G	D8-G	D5-G
B1	RESIDENTIAL CARPARK							

BLOCK 70

UNIT/ FLOOR	73	74	75	76	77	78	79	80	81
5	C6	B3	D6	C10	C1	C1	C3	D2	C5
4	C6	B3	D6	C10	C1	C1	C3	D2	C5
3	C6	B3	D6	C10	C1	C1	C3	D2	C5
2	C6	B3	D6	C10	C1	C1	C3	D2	C5
1	C6-G	B3-G	D6-G	C10-G	C1-G	C1-G	C3-G	D2-G	C5-G
B1	RESIDENTIAL CARPARK								

2-Bedroom

Type B1-G 60 SQM / 646 SQFT
INCLUSIVE OF 5 SQM PES

TOWER	UNIT
54	#01-08
56	#01-11*
58	#01-28*
60	#01-38*
62	#01-46
64	#01-55

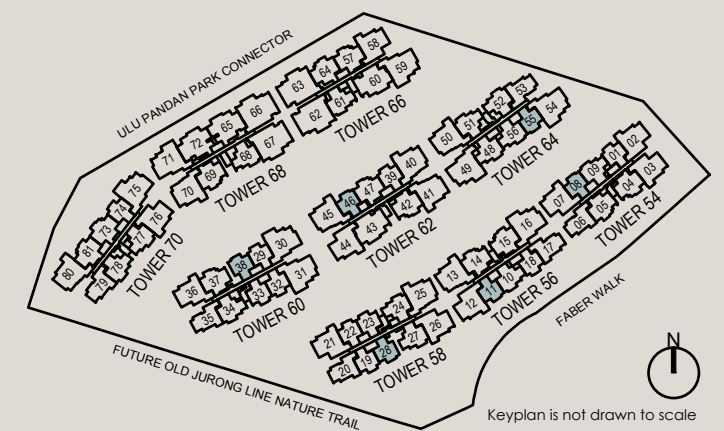
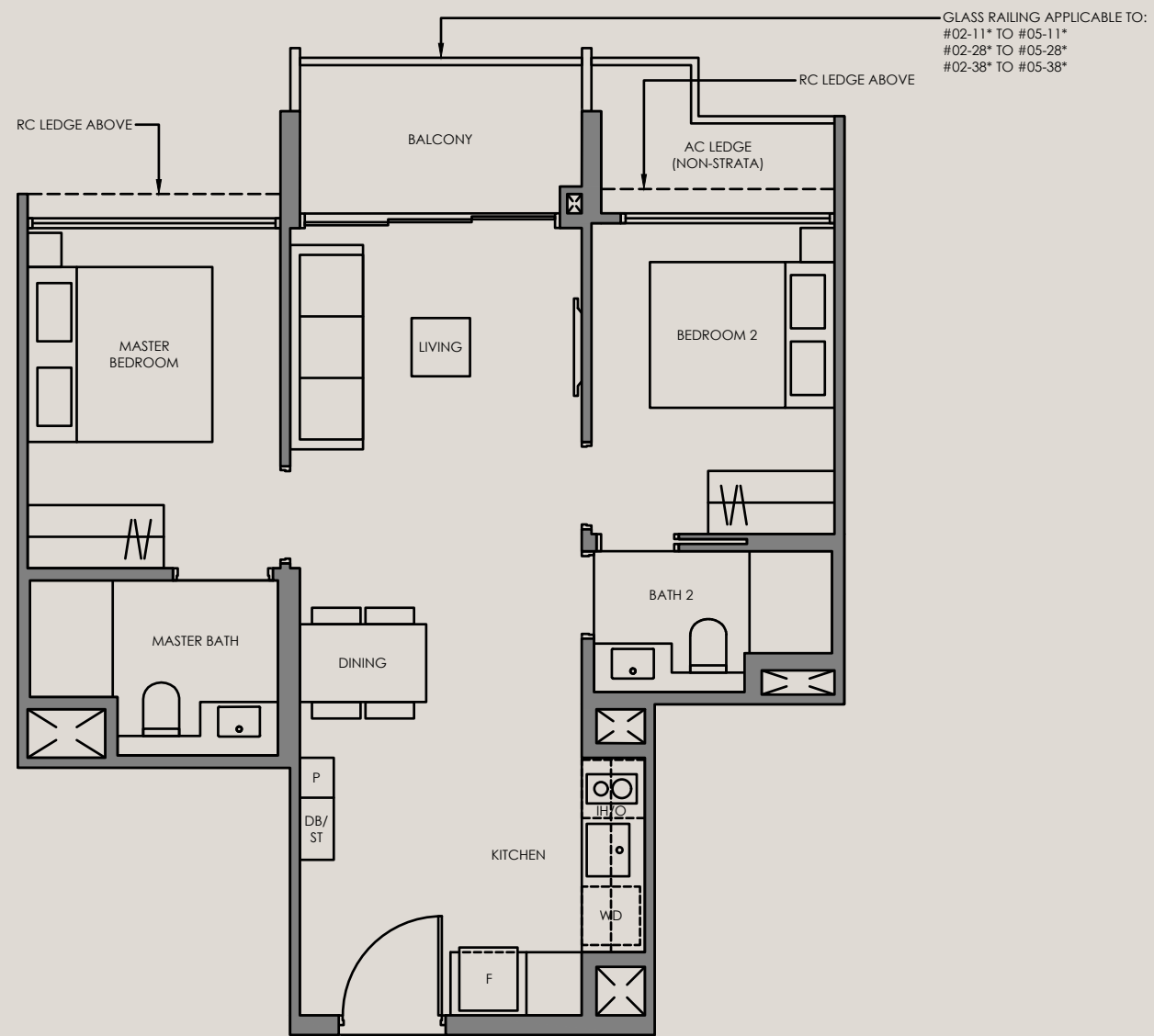
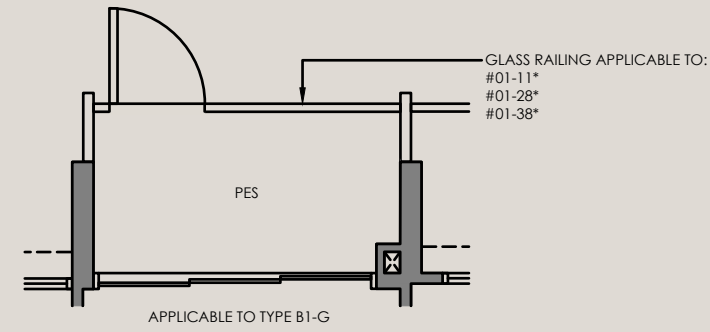
Type B1 60 SQM / 646 SQFT
INCLUSIVE OF 5 SQM BALCONY

TOWER	UNIT
54	#02-08 TO #05-08
56	#02-11* TO #05-11*
58	#02-28* TO #05-28*
60	#02-38* TO #05-38*
62	#02-46 TO #05-46
64	#02-55 TO #05-55

Legend (where applicable):

- F - Fridge
- P - Pantry
- O - Oven
- GH - Gas Hob
- *Mirror Image
- IH - Induction Hob
- WD - Washer Dryer
- DB - Distribution Board
- ST - Store

ALL PLANS ARE SUBJECT TO AMENDMENTS AS MAY BE APPROVED BY THE RELEVANT AUTHORITIES. FLOOR AREAS ARE APPROXIMATE MEASUREMENTS AND ARE SUBJECT TO FINAL SURVEY.



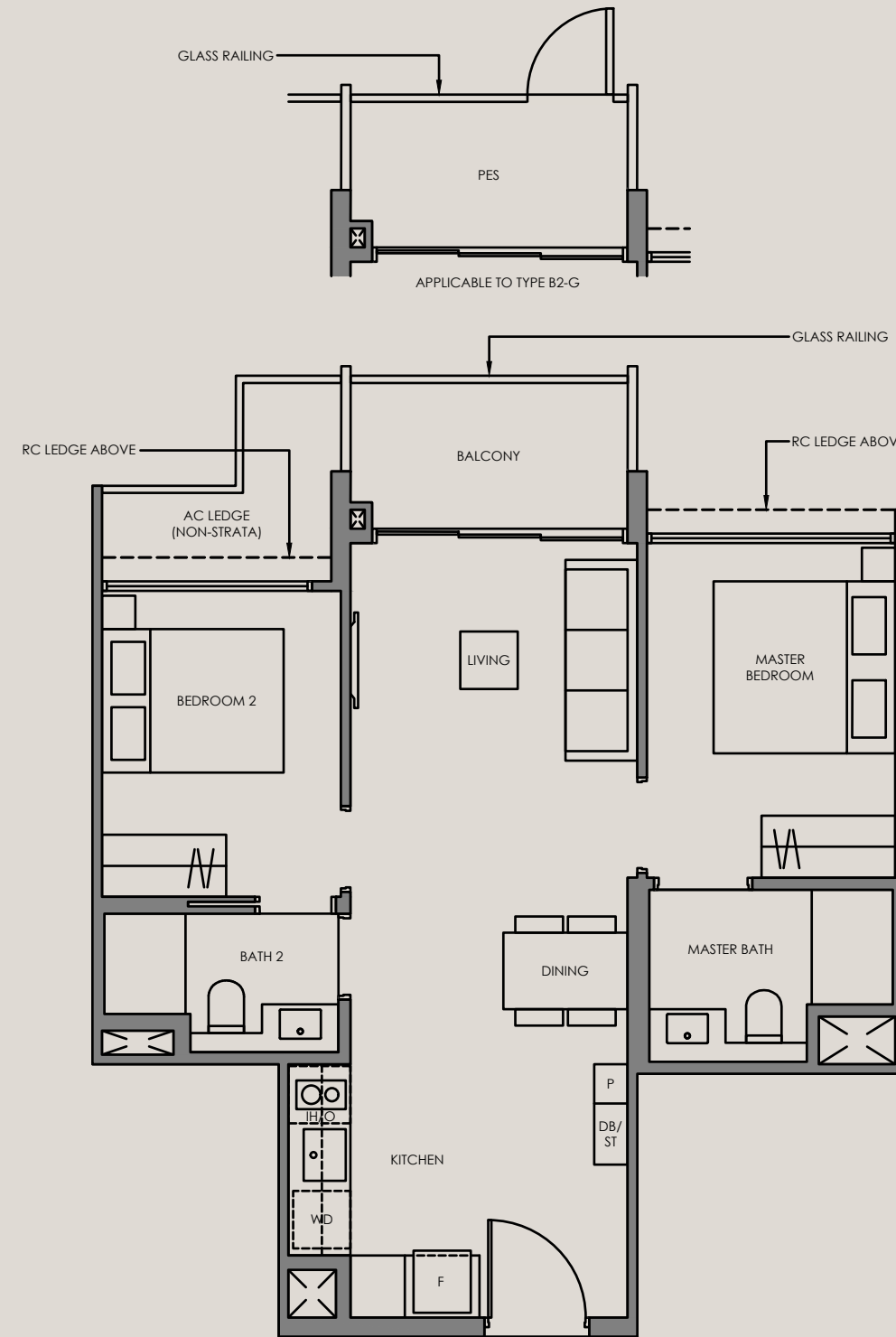
2-Bedroom

Type B2-G 60 SQM / 646 SQFT
INCLUSIVE OF 5 SQM PES

TOWER	UNIT
58	#01-23
60	#01-33

Type B2 60 SQM / 646 SQFT
INCLUSIVE OF 5 SQM BALCONY

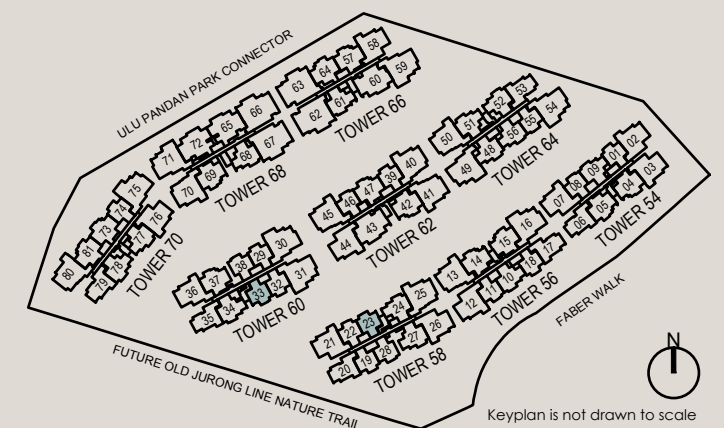
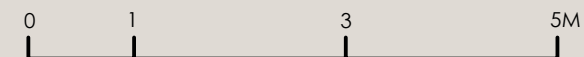
TOWER	UNIT
58	#02-23 TO #05-23
60	#02-33 TO #05-33



Legend (where applicable):

- F - Fridge
- P - Pantry
- O - Oven
- GH - Gas Hob
- *Mirror Image
- IH - Induction Hob
- WD - Washer Dryer
- DB - Distribution Board
- ST - Store

ALL PLANS ARE SUBJECT TO AMENDMENTS AS MAY BE APPROVED BY THE RELEVANT AUTHORITIES.
FLOOR AREAS ARE APPROXIMATE MEASUREMENTS AND ARE SUBJECT TO FINAL SURVEY.



Keyplan is not drawn to scale

2-Bedroom

Type B3-G 60 SQM / 646 SQFT
INCLUSIVE OF 5 SQM PES

TOWER	UNIT
54	#01-01*
56	#01-18
58	#01-19* #01-22
60	#01-29* #01-32
62	#01-39*
70	#01-74*

Type B3 60 SQM / 646 SQFT
INCLUSIVE OF 5 SQM BALCONY

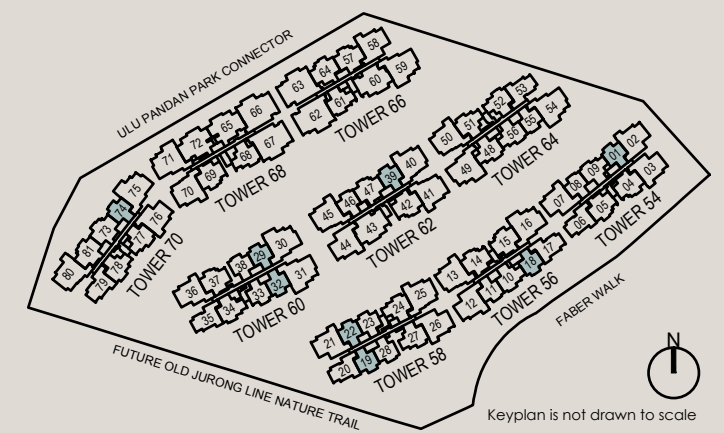
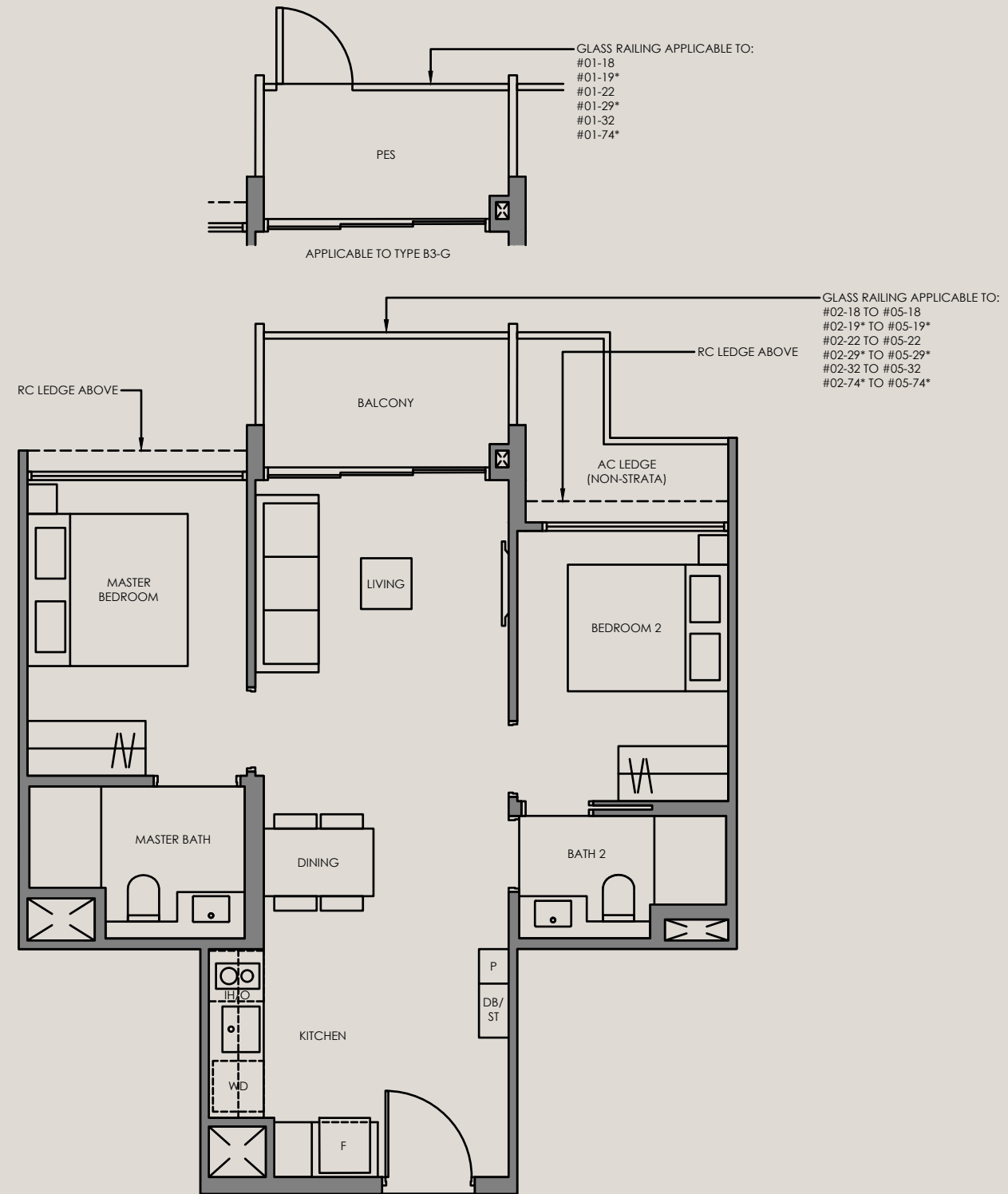
TOWER	UNIT
54	#02-01* TO #05-01*
56	#02-18 TO #05-18
58	#02-19* TO #05-19* #02-22 TO #05-22
60	#02-29* TO #05-29* #02-32 TO #05-32
62	#02-39* TO #05-39*
70	#02-74* TO #05-74*



Legend (where applicable):

- F - Fridge
- P - Pantry
- O - Oven
- GH - Gas Hob
- *Mirror Image
- IH - Induction Hob
- WD - Washer Dryer
- DB - Distribution Board
- ST - Store

ALL PLANS ARE SUBJECTED TO AMENDMENTS AS MAY BE APPROVED BY THE RELEVANT AUTHORITIES.
FLOOR AREAS ARE APPROXIMATE MEASUREMENTS AND ARE SUBJECTED TO FINAL SURVEY.



3-Bedroom

Type C1-G 74 SQM / 797 SQFT
INCLUSIVE OF 5 SQM PES

TOWER	UNIT
58	#01-24
	#01-27*
	#01-34
60	#01-34
	#01-48*
64	#01-48*
	#01-51*
	#01-52
70	#01-77*
	#01-78
	#01-78

Type C1 74 SQM / 797 SQFT
INCLUSIVE OF 5 SQM BALCONY

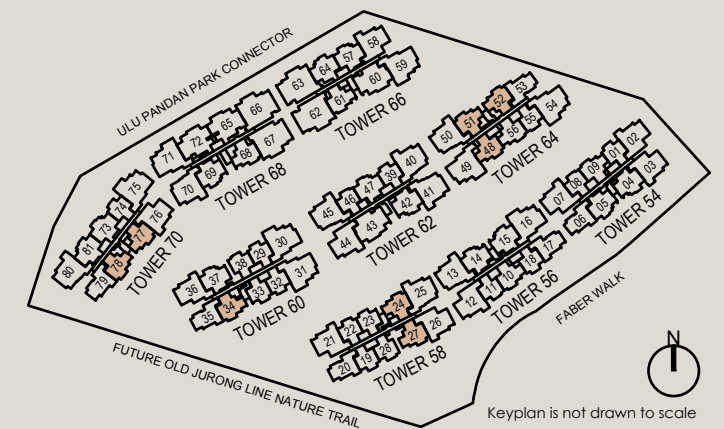
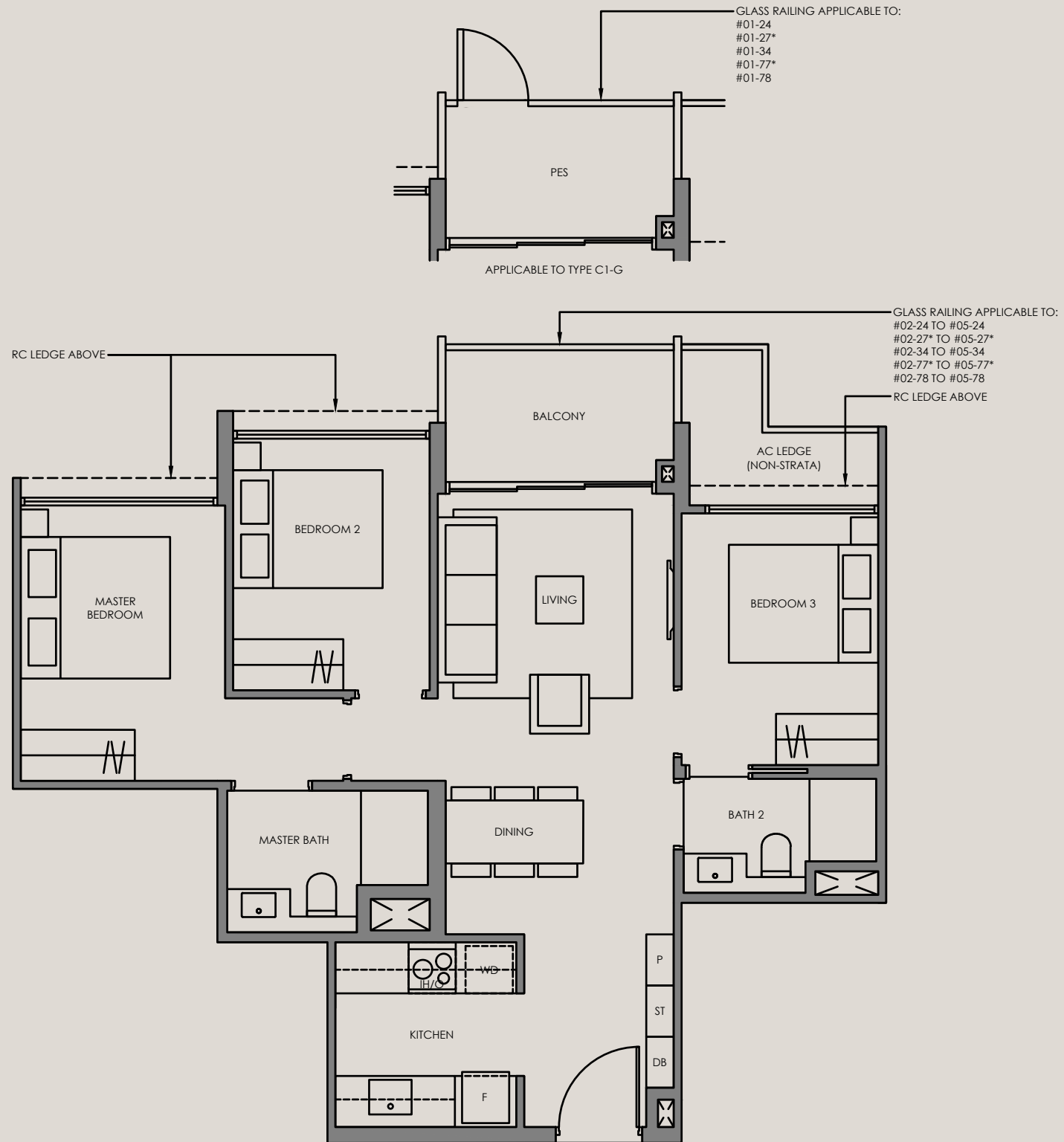
TOWER	UNIT
58	#02-24 TO #05-24
	#02-27* TO #05-27*
60	#02-34 TO #05-34
	#02-48* TO #05-48*
64	#02-48* TO #05-48*
	#02-51* TO #05-51*
	#02-52 TO #05-52
70	#02-77* TO #05-77*
	#02-78 TO #05-78
	#02-78 TO #05-78



Legend (where applicable):

- F - Fridge
- P - Pantry
- O - Oven
- GH - Gas Hob
- *Mirror Image
- IH - Induction Hob
- WD - Washer Dryer
- DB - Distribution Board
- ST - Store

ALL PLANS ARE SUBJECTED TO AMENDMENTS AS MAY BE APPROVED BY THE RELEVANT AUTHORITIES.
FLOOR AREAS ARE APPROXIMATE MEASUREMENTS AND ARE SUBJECTED TO FINAL SURVEY.



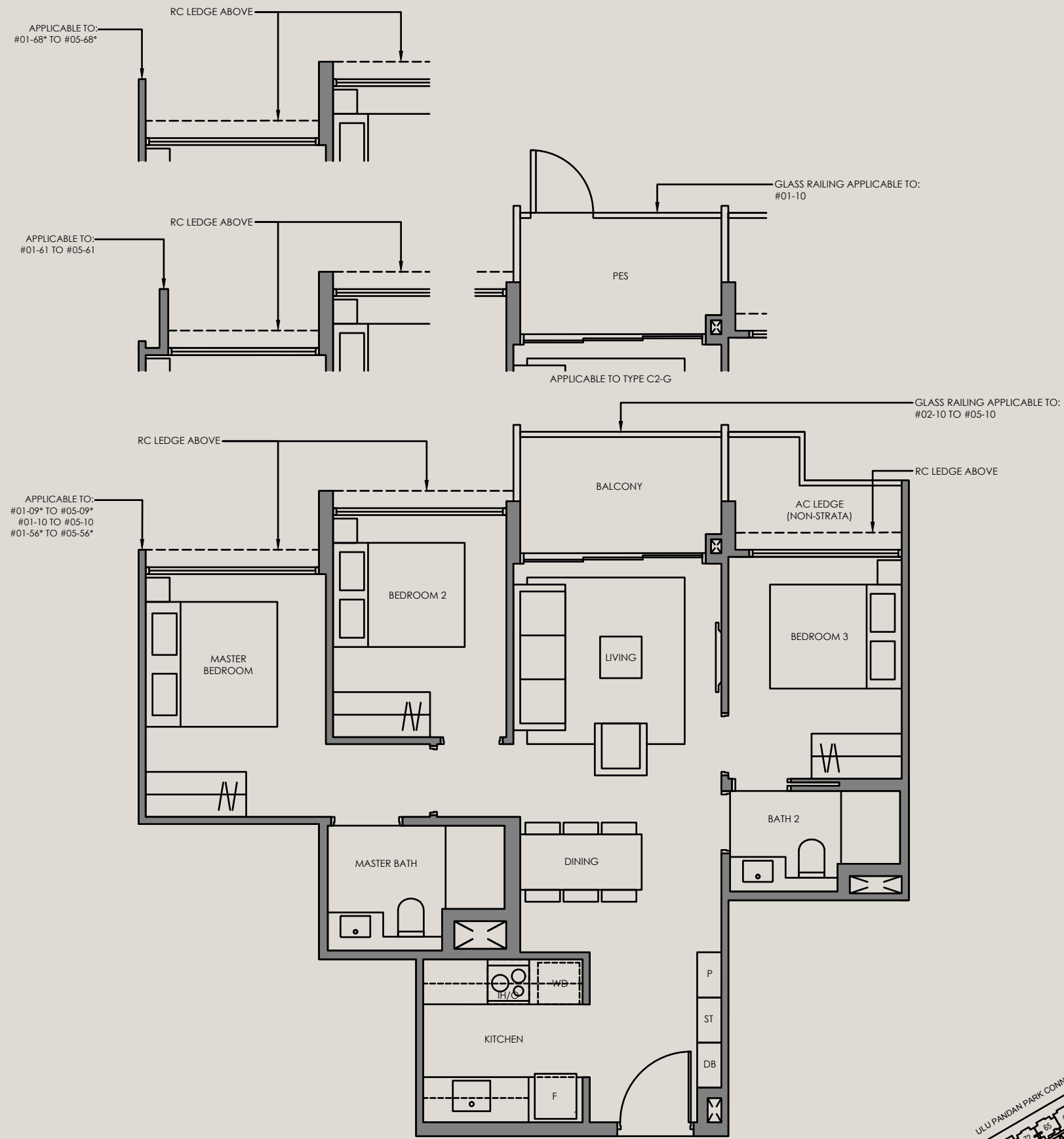
3-Bedroom

Type C2-G 74 SQM / 797 SQFT
INCLUSIVE OF 5 SQM PES

TOWER	UNIT
54	#01-09*
56	#01-10
64	#01-56*
66	#01-61
68	#01-68*

Type C2 74 SQM / 797 SQFT
INCLUSIVE OF 5 SQM BALCONY

TOWER	UNIT
54	#02-09* TO #05-09*
56	#02-10 TO #05-10
64	#02-56* TO #05-56*
66	#02-61 TO #05-61
68	#02-68* TO #05-68*

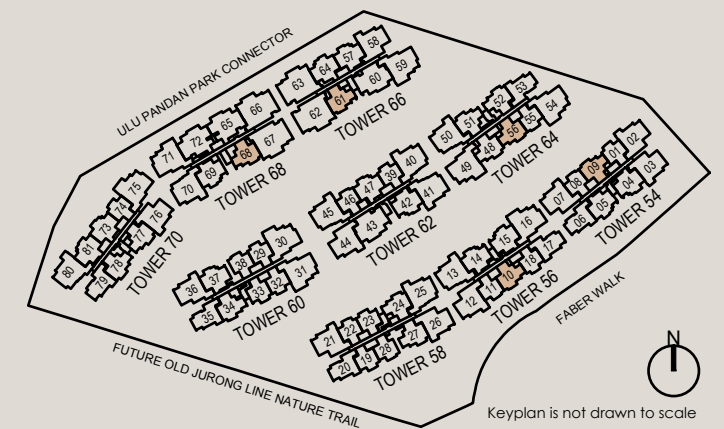


Legend (where applicable):

- F - Fridge
- IH - Induction Hob
- P - Pantry
- WD - Washer Dryer
- O - Oven
- DB - Distribution Board
- GH - Gas Hob
- ST - Store

*Mirror Image

ALL PLANS ARE SUBJECT TO AMENDMENTS AS MAY BE APPROVED BY THE RELEVANT AUTHORITIES.
FLOOR AREAS ARE APPROXIMATE MEASUREMENTS AND ARE SUBJECT TO FINAL SURVEY.



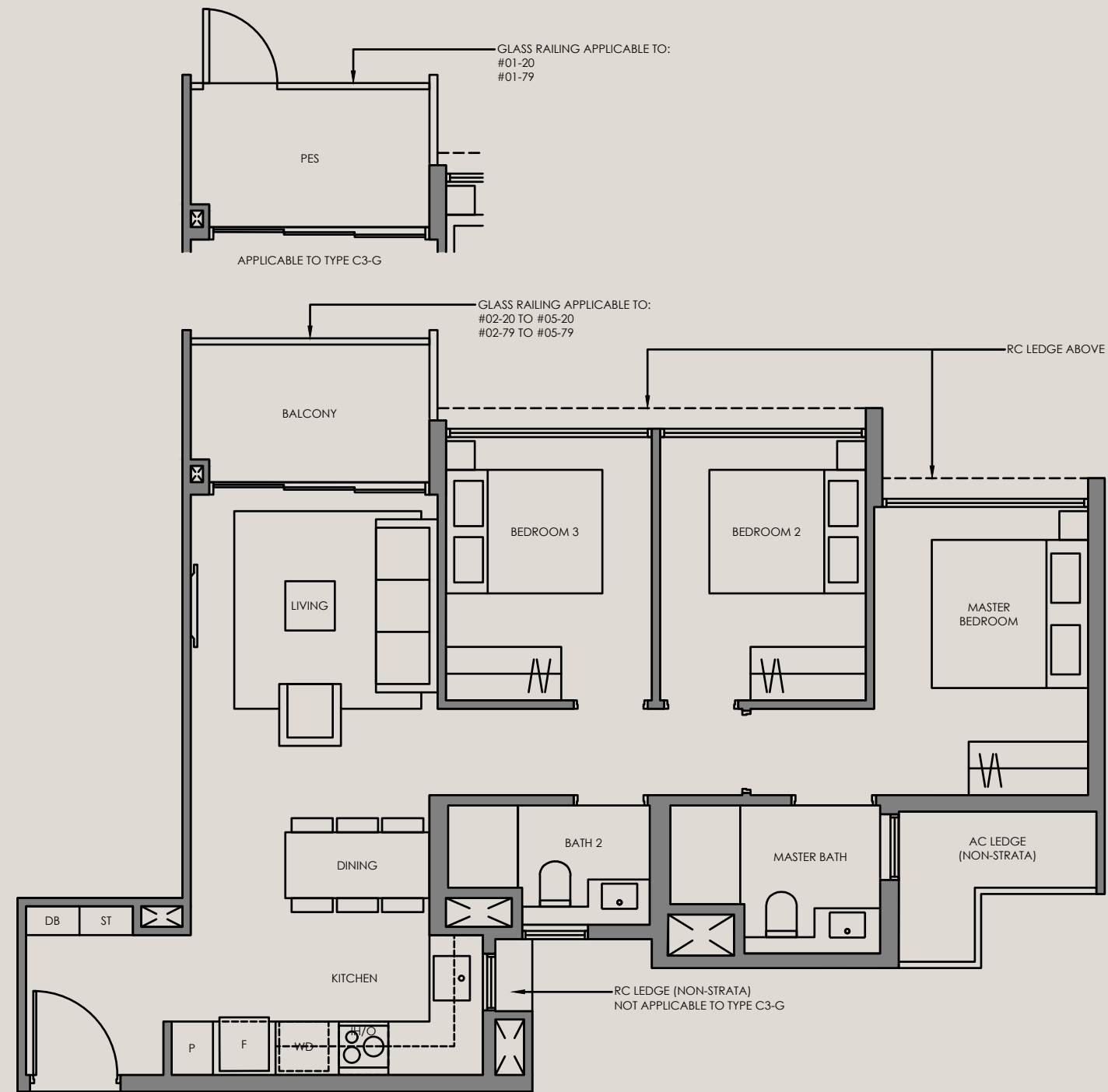
3-Bedroom

Type C3-G 76 SQM / 818 SQFT
INCLUSIVE OF 5 SQM PES

TOWER	UNIT
58	#01-20
64	#01-53
70	#01-79

Type C3 76 SQM / 818 SQFT
INCLUSIVE OF 5 SQM BALCONY

TOWER	UNIT
54	#03-06 TO #05-06
58	#02-20 TO #05-20
64	#02-53 TO #05-53
70	#02-79 TO #05-79

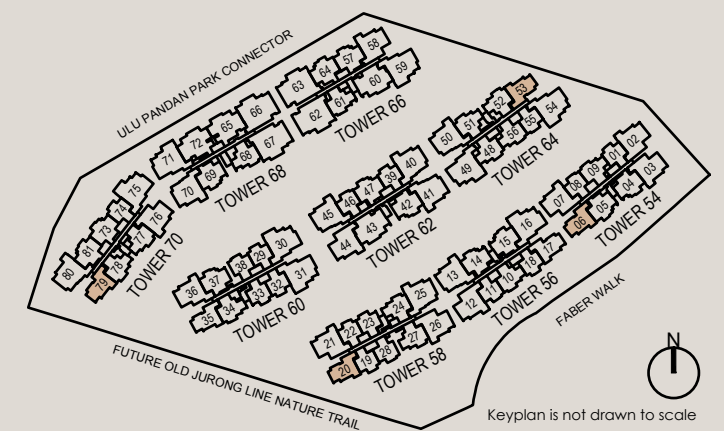


Legend (where applicable):

- F - Fridge
- P - Pantry
- O - Oven
- GH - Gas Hob
- IH - Induction Hob
- WD - Washer Dryer
- DB - Distribution Board
- ST - Store

*Mirror Image

ALL PLANS ARE SUBJECT TO AMENDMENTS AS MAY BE APPROVED BY THE RELEVANT AUTHORITIES.
FLOOR AREAS ARE APPROXIMATE MEASUREMENTS AND ARE SUBJECT TO FINAL SURVEY.



Keyplan is not drawn to scale

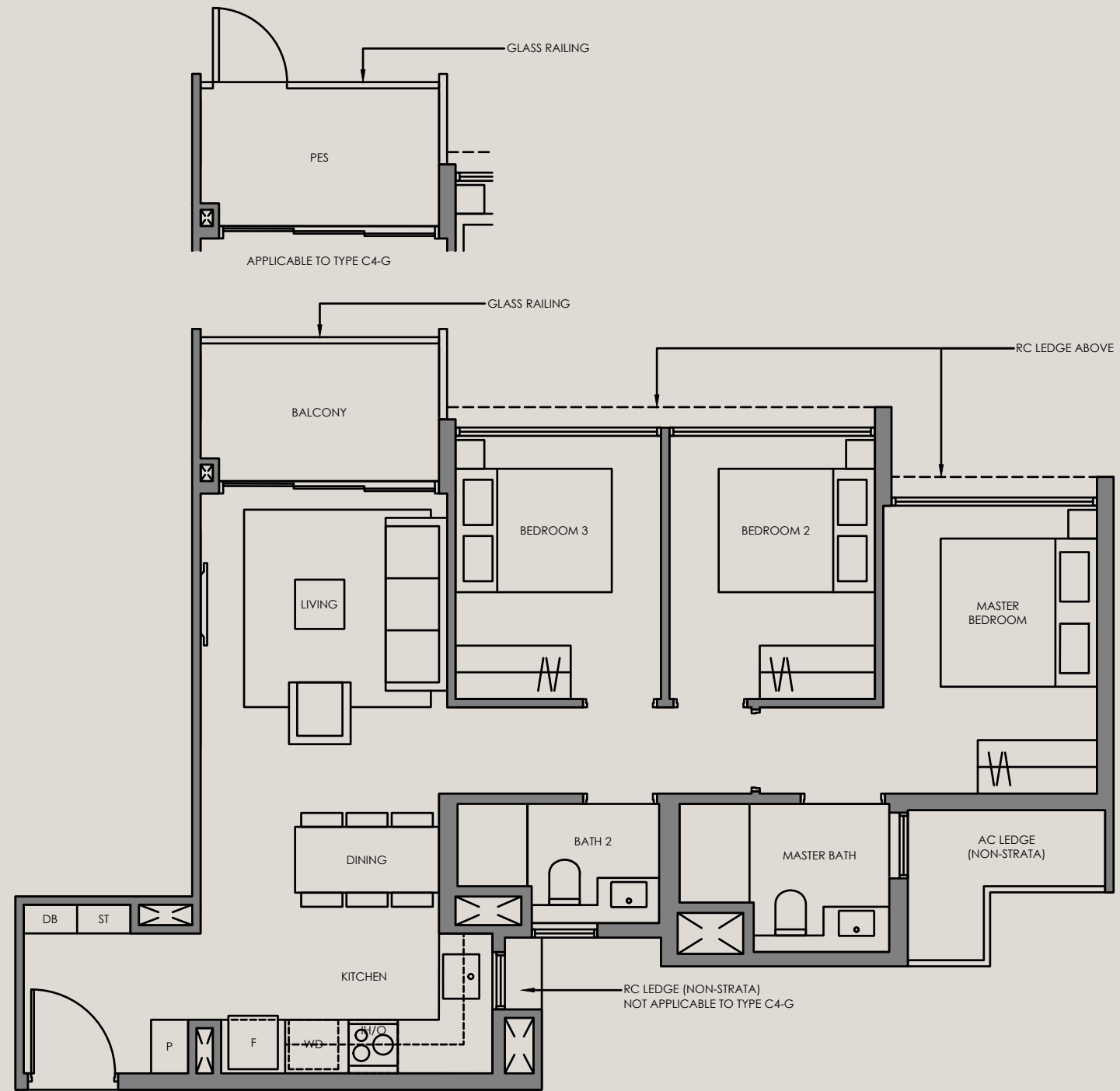
3-Bedroom

Type C4-G 76 SQM / 818 SQFT
INCLUSIVE OF 5 SQM PES

TOWER	UNIT
56	#01-17*
60	#01-35

Type C4 76 SQM / 818 SQFT
INCLUSIVE OF 5 SQM BALCONY

TOWER	UNIT
56	#02-17* TO #05-17*
60	#02-35 TO #05-35

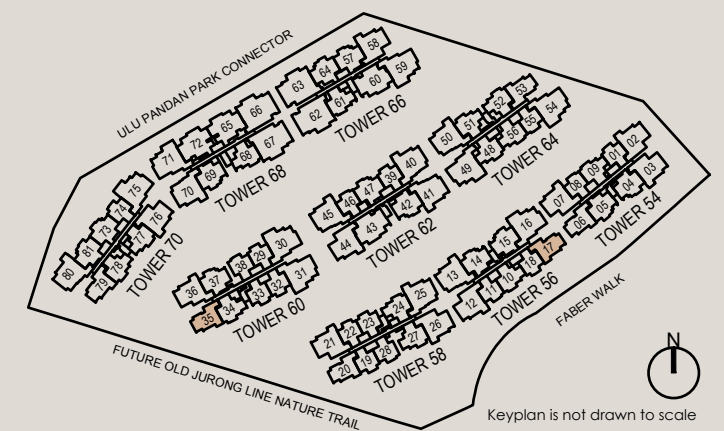
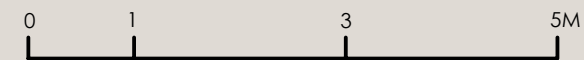


Legend (where applicable):

- F - Fridge
- P - Pantry
- O - Oven
- GH - Gas Hob
- IH - Induction Hob
- WD - Washer Dryer
- DB - Distribution Board
- ST - Store

*Mirror Image

ALL PLANS ARE SUBJECT TO AMENDMENTS AS MAY BE APPROVED BY THE RELEVANT AUTHORITIES.
FLOOR AREAS ARE APPROXIMATE MEASUREMENTS AND ARE SUBJECT TO FINAL SURVEY.



3-Bedroom

Type C5-G 80 SQM / 861 SQFT
INCLUSIVE OF 6 SQM PES

TOWER	UNIT
56	#01-14 #01-15*
60	#01-37
62	#01-42
66	#01-57
68	#01-69*
70	#01-81*

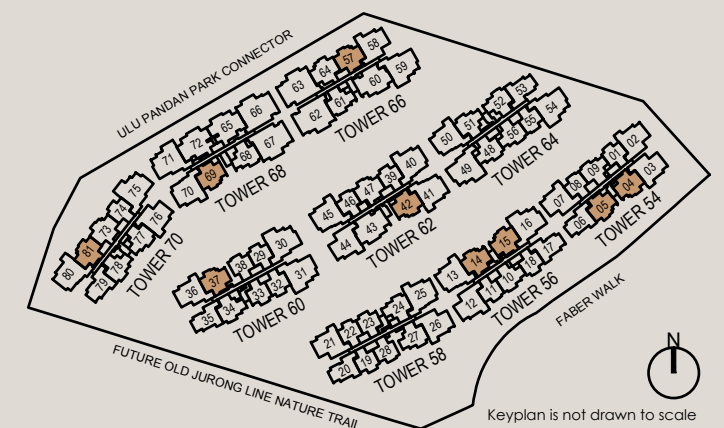
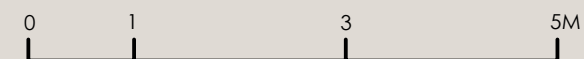
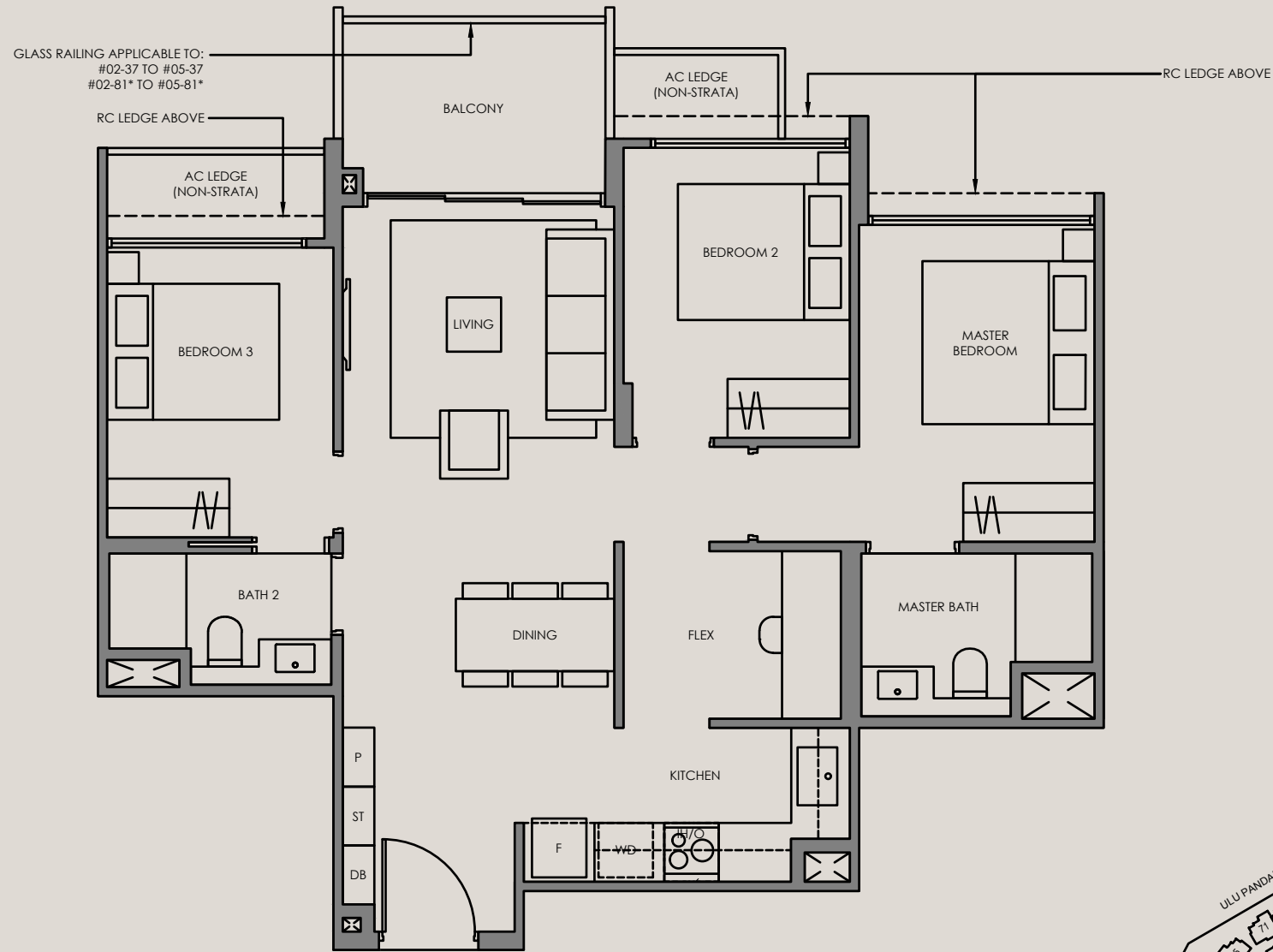
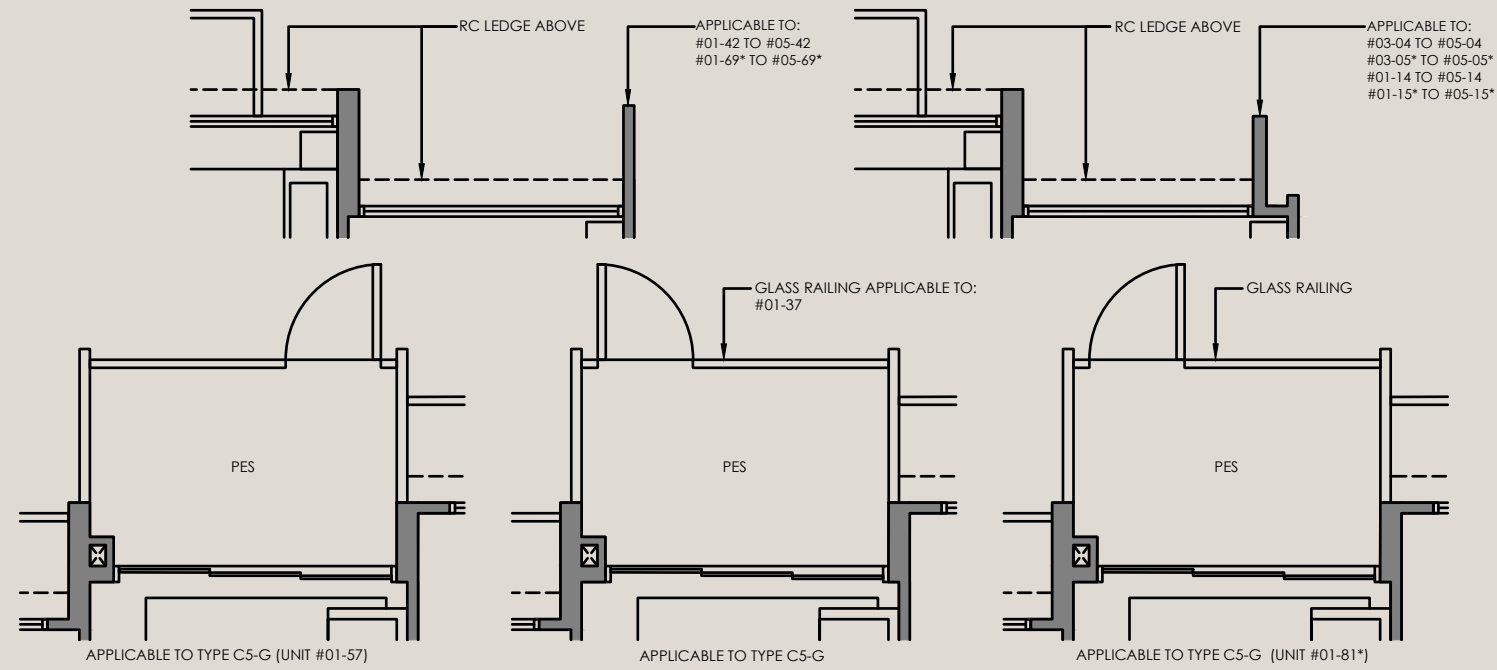
Type C5 80 SQM / 861 SQFT
INCLUSIVE OF 6 SQM BALCONY

TOWER	UNIT
54	#03-04 TO #05-04 #03-05* TO #05-05*
56	#02-14 TO #05-14 #02-15* TO #05-15*
60	#02-37 TO #05-37
62	#02-42 TO #05-42
66	#02-57 TO #05-57
68	#02-69* TO #05-69*
70	#02-81* TO #05-81*

Legend (where applicable):

- F - Fridge
- IH - Induction Hob
- P - Pantry
- WD - Washer Dryer
- O - Oven
- DB - Distribution Board
- GH - Gas Hob
- ST - Store

*Mirror Image



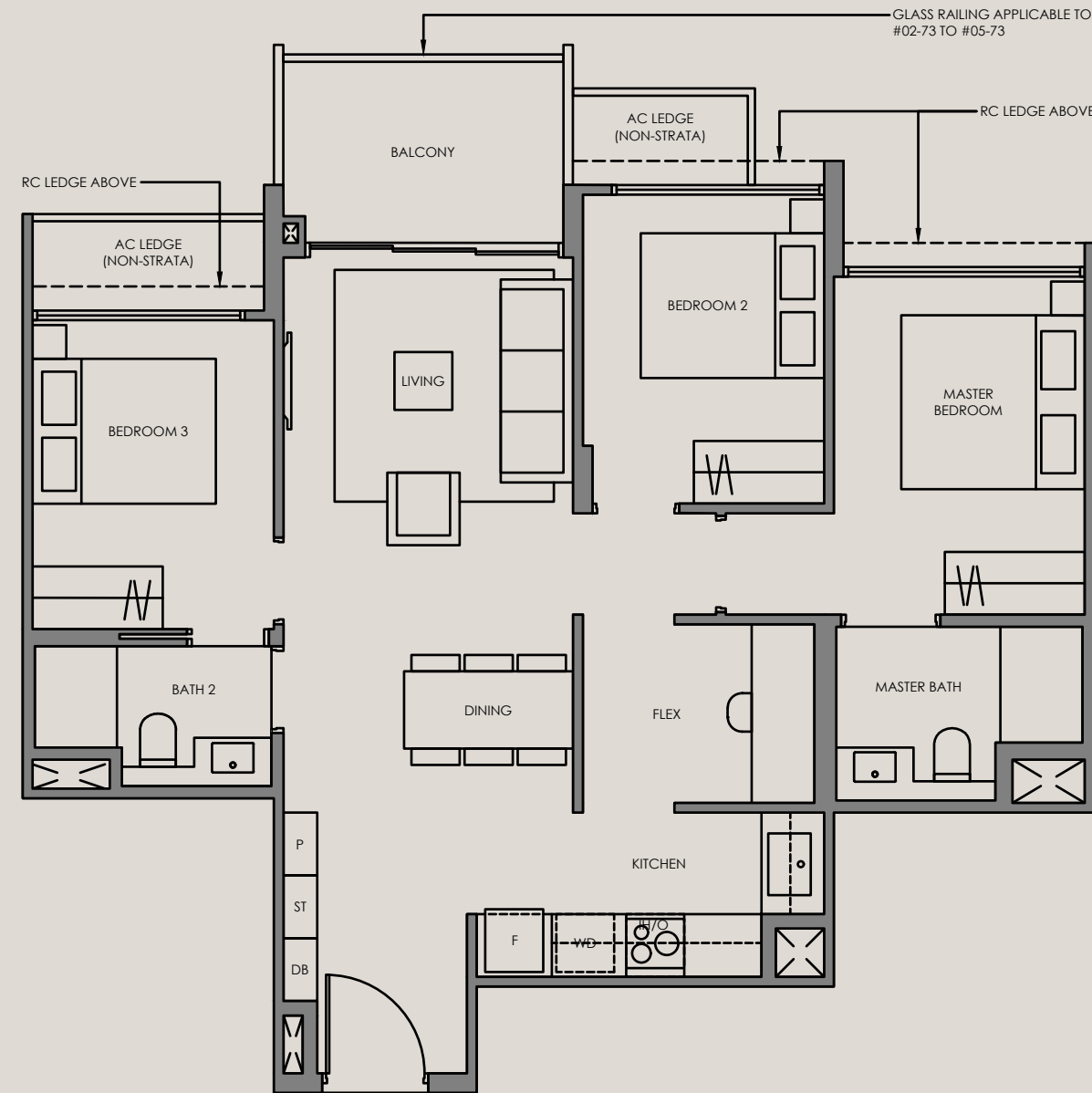
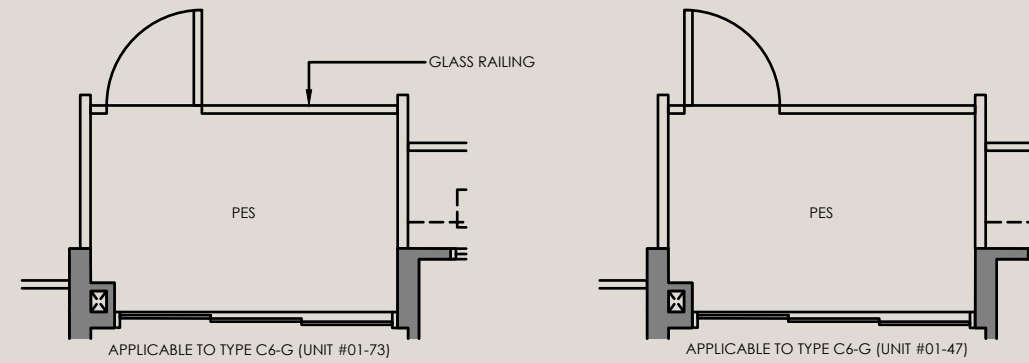
3-Bedroom

Type C6-G 80 SQM / 861 SQFT
INCLUSIVE OF 6 SQM PES

TOWER	UNIT
62	#01-47
70	#01-73

Type C6 80 SQM / 861 SQFT
INCLUSIVE OF 6 SQM BALCONY

TOWER	UNIT
62	#02-47 TO #05-47
70	#02-73 TO #05-73

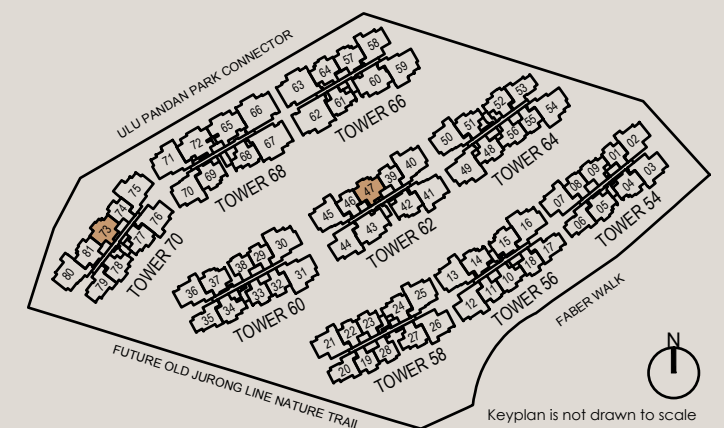
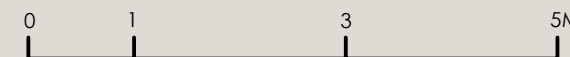


Legend (where applicable):

- F - Fridge
- P - Pantry
- O - Oven
- GH - Gas Hob
- IH - Induction Hob
- WD - Washer Dryer
- DB - Distribution Board
- ST - Store

*Mirror Image

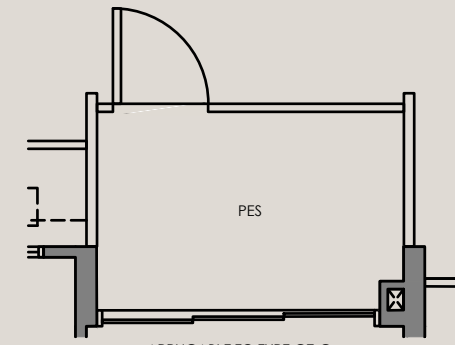
ALL PLANS ARE SUBJECT TO AMENDMENTS AS MAY BE APPROVED BY THE RELEVANT AUTHORITIES.
FLOOR AREAS ARE APPROXIMATE MEASUREMENTS AND ARE SUBJECT TO FINAL SURVEY.



3-Bedroom

Type C7-G 80 SQM / 861 SQFT
INCLUSIVE OF 6 SQM PES

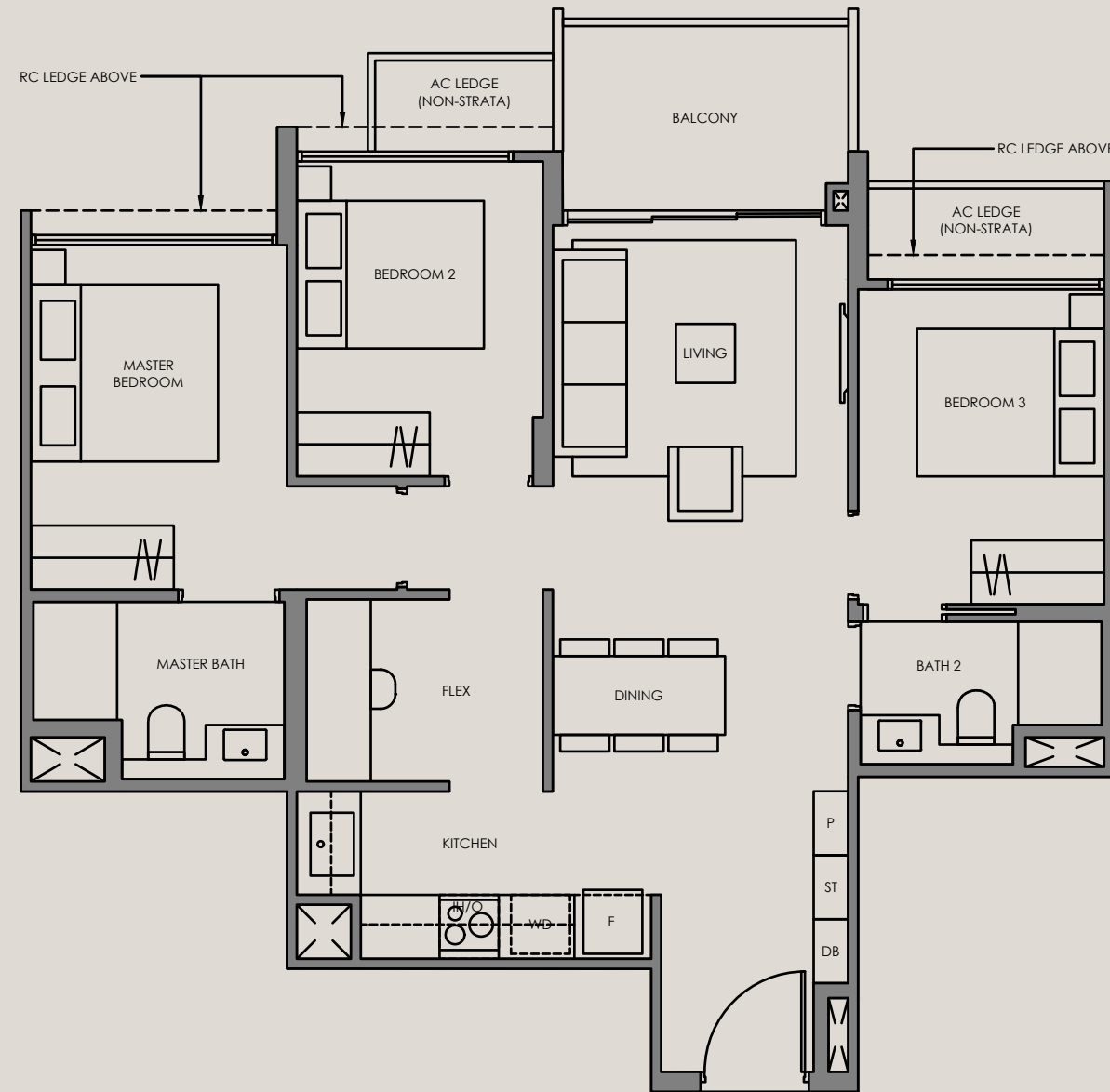
TOWER 66
UNIT #01-64



APPLICABLE TO TYPE C7-G

Type C7 80 SQM / 861 SQFT
INCLUSIVE OF 6 SQM BALCONY

TOWER 66
UNIT #02-64 TO #05-64

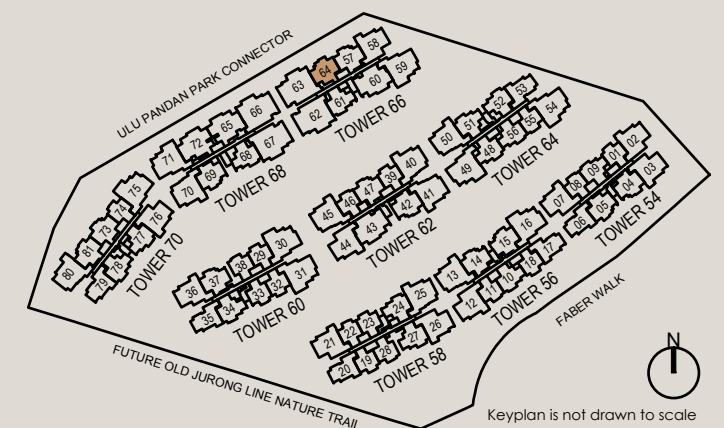
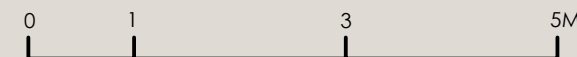


Legend (where applicable):

- F - Fridge
- P - Pantry
- O - Oven
- GH - Gas Hob
- IH - Induction Hob
- WD - Washer Dryer
- DB - Distribution Board
- ST - Store

*Mirror Image

ALL PLANS ARE SUBJECT TO AMENDMENTS AS MAY BE APPROVED BY THE RELEVANT AUTHORITIES.
FLOOR AREAS ARE APPROXIMATE MEASUREMENTS AND ARE SUBJECT TO FINAL SURVEY.



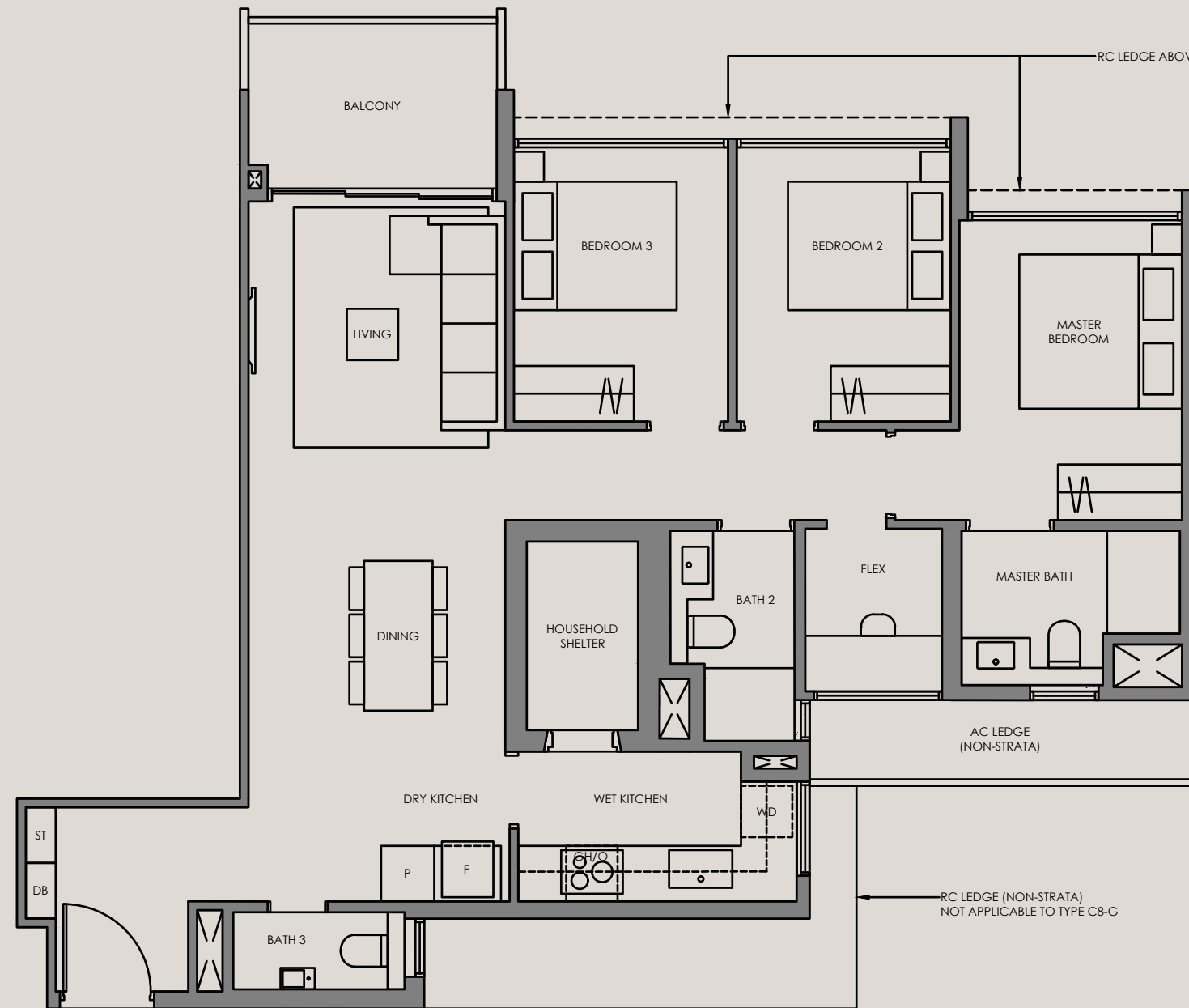
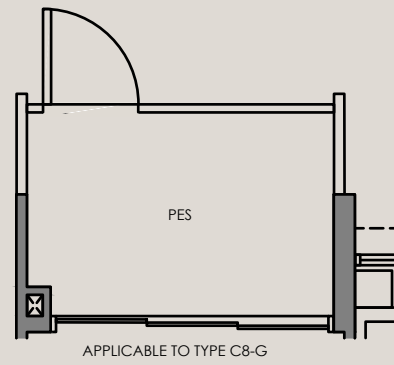
3-Bedroom

Type C8-G 96 SQM / 1033 SQFT
INCLUSIVE OF 6 SQM PES

TOWER 62
UNIT #01-44

Type C8 96 SQM / 1033 SQFT
INCLUSIVE OF 6 SQM BALCONY

TOWER 62
UNIT #02-44 TO #05-44

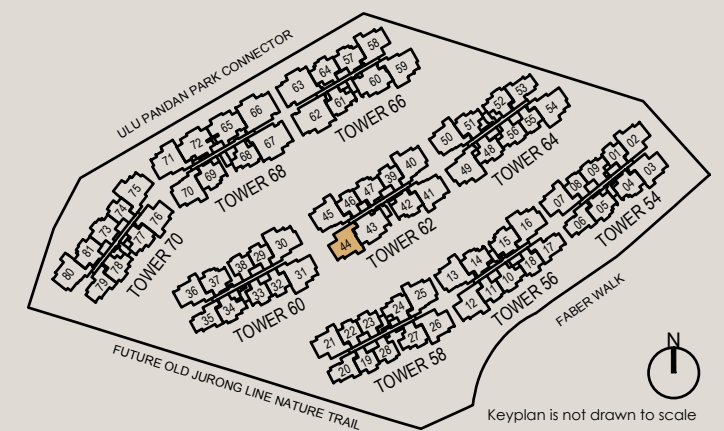
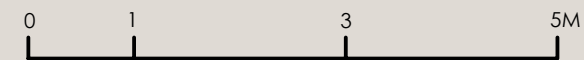


Legend (where applicable):

- F - Fridge
- P - Pantry
- O - Oven
- GH - Gas Hob
- IH - Induction Hob
- WD - Washer Dryer
- DB - Distribution Board
- ST - Store

*Mirror Image

ALL PLANS ARE SUBJECT TO AMENDMENTS AS MAY BE APPROVED BY THE RELEVANT AUTHORITIES.
FLOOR AREAS ARE APPROXIMATE MEASUREMENTS AND ARE SUBJECT TO FINAL SURVEY.



3-Bedroom

Type C9-G 96 SQM / 1033 SQFT
INCLUSIVE OF 6 SQM PES

TOWER	UNIT
54	#01-02
58	#01-21*

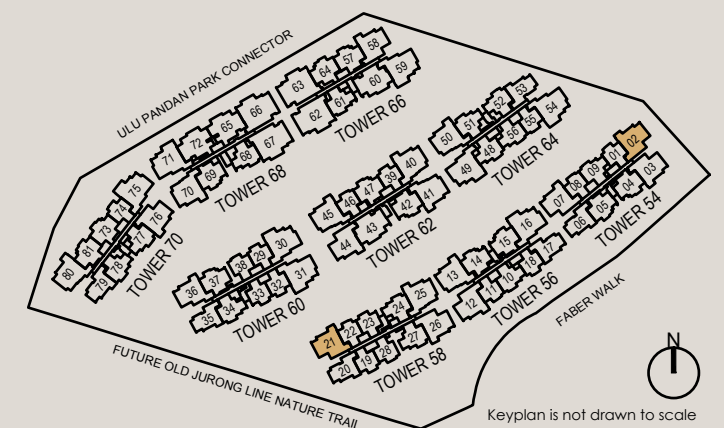
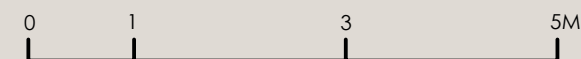
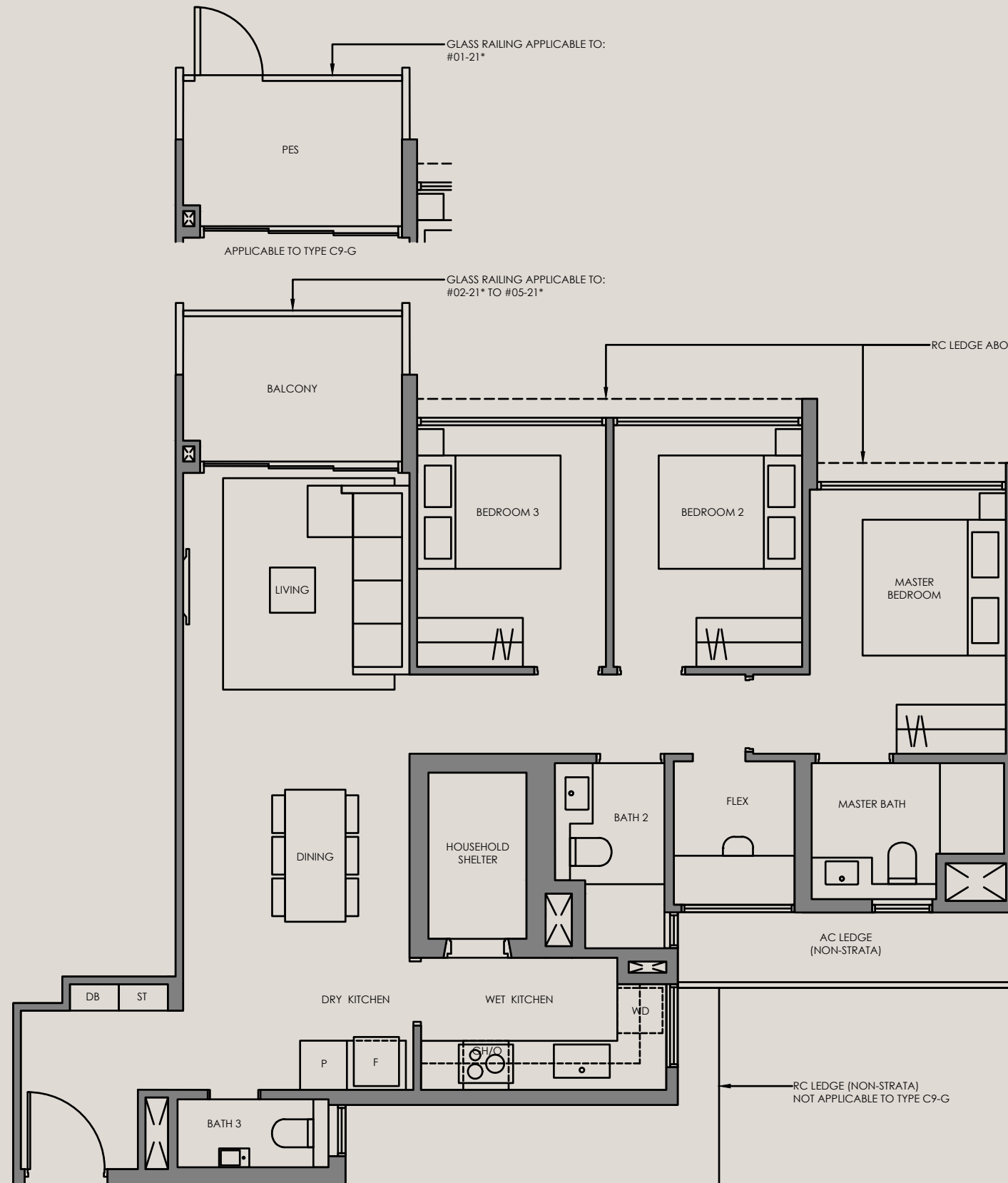
Type C9 96 SQM / 1033 SQFT
INCLUSIVE OF 6 SQM BALCONY

TOWER	UNIT
54	#02-02 TO #05-02
58	#02-21* TO #05-21*

Legend (where applicable):

- F - Fridge
- P - Pantry
- O - Oven
- GH - Gas Hob
- *Mirror Image
- IH - Induction Hob
- WD - Washer Dryer
- DB - Distribution Board
- ST - Store

ALL PLANS ARE SUBJECTED TO AMENDMENTS AS MAY BE APPROVED BY THE RELEVANT AUTHORITIES.
FLOOR AREAS ARE APPROXIMATE MEASUREMENTS AND ARE SUBJECTED TO FINAL SURVEY.



Keyplan is not drawn to scale

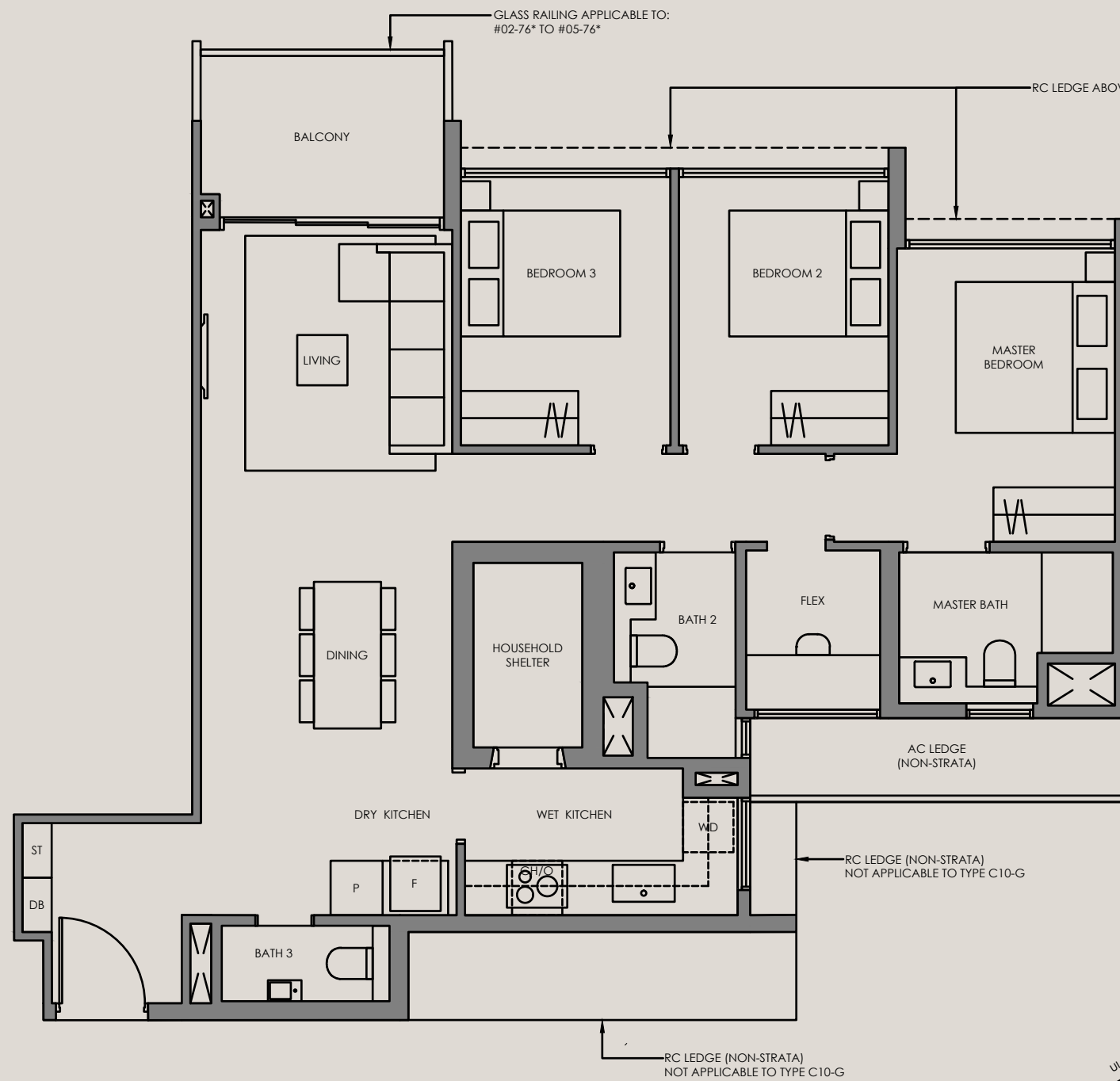
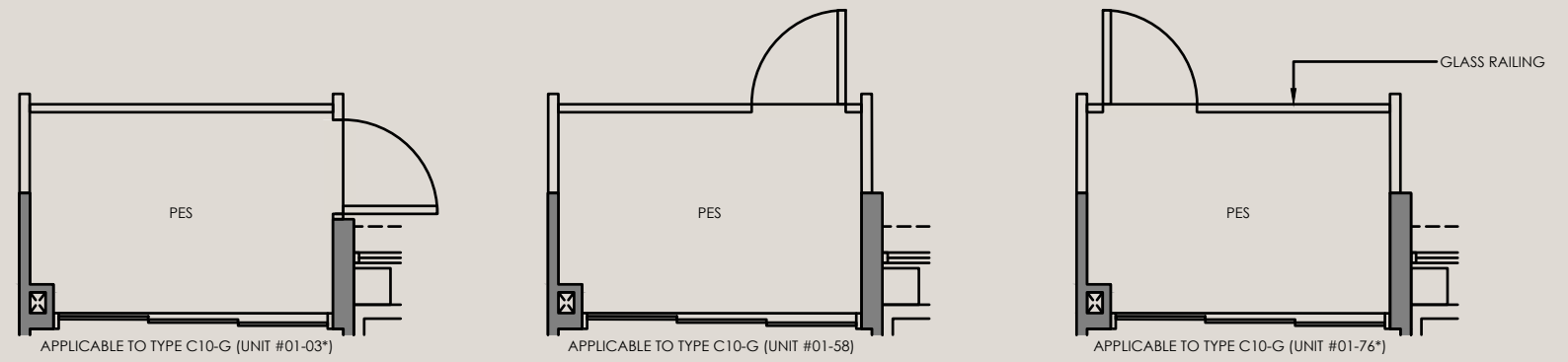
3-Bedroom

Type C10-G 96 SQM / 1033 SQFT
INCLUSIVE OF 6 SQM PES

TOWER	UNIT
54	#01-03*
66	#01-58
70	#01-76*

Type C10 96 SQM / 1033 SQFT
INCLUSIVE OF 6 SQM BALCONY

TOWER	UNIT
54	#02-03* TO #05-03*
66	#02-58 TO #05-58
70	#02-76* TO #05-76*

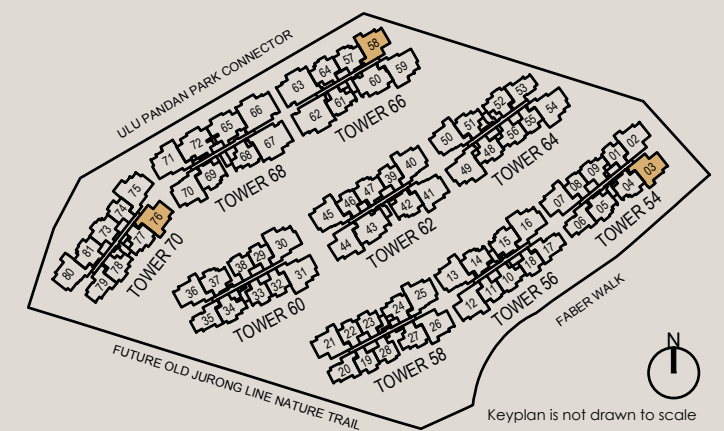


Legend (where applicable):

- F - Fridge
- P - Pantry
- O - Oven
- GH - Gas Hob
- IH - Induction Hob
- WD - Washer Dryer
- DB - Distribution Board
- ST - Store

*Mirror Image

ALL PLANS ARE SUBJECT TO AMENDMENTS AS MAY BE APPROVED BY THE RELEVANT AUTHORITIES.
FLOOR AREAS ARE APPROXIMATE MEASUREMENTS AND ARE SUBJECT TO FINAL SURVEY.



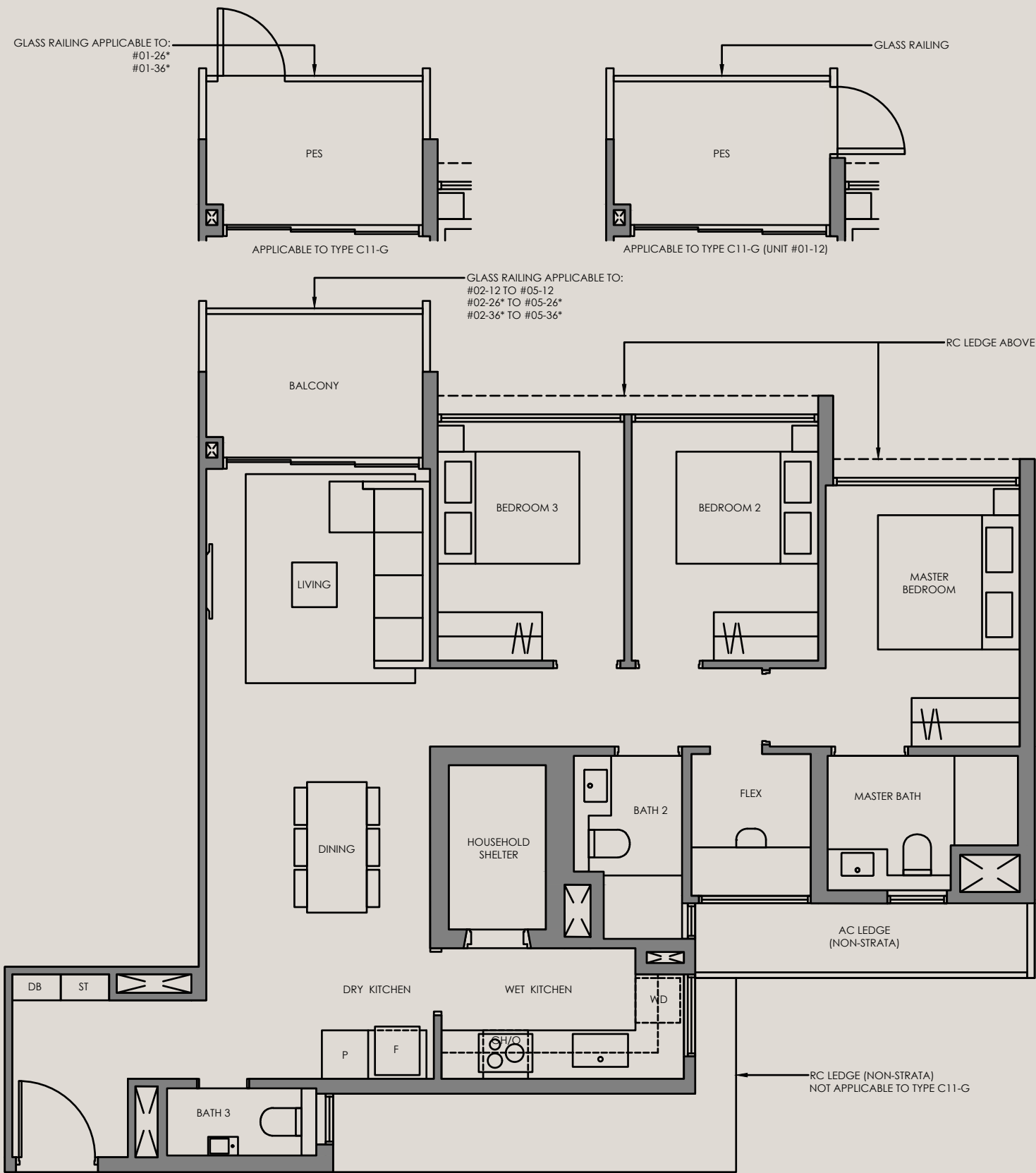
3-Bedroom

Type C11-G 97 SQM / 1044 SQFT
INCLUSIVE OF 6 SQM PES

TOWER	UNIT
54	#01-07*
56	#01-12
58	#01-26*
60	#01-36*

Type C11 97 SQM / 1044 SQFT
INCLUSIVE OF 6 SQM BALCONY

TOWER	UNIT
54	#02-07* TO #05-07*
56	#02-12 TO #05-12
58	#02-26* TO #05-26*
60	#02-36* TO #05-36*

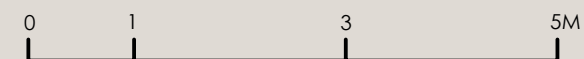
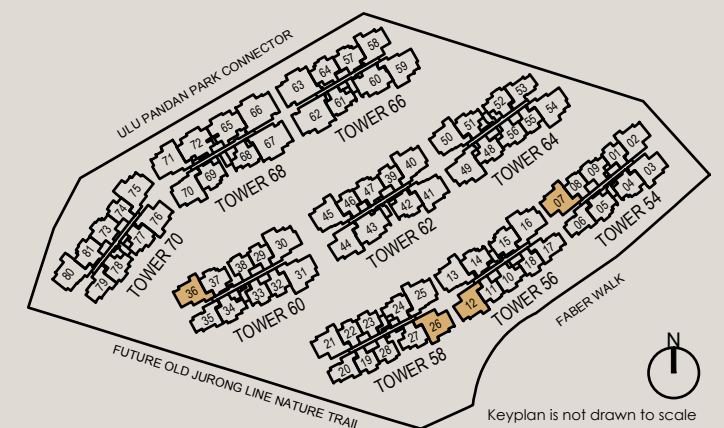


Legend (where applicable):

- F - Fridge
- P - Pantry
- O - Oven
- GH - Gas Hob
- IH - Induction Hob
- WD - Washer Dryer
- DB - Distribution Board
- ST - Store

*Mirror Image

ALL PLANS ARE SUBJECTED TO AMENDMENTS AS MAY BE APPROVED BY THE RELEVANT AUTHORITIES. FLOOR AREAS ARE APPROXIMATE MEASUREMENTS AND ARE SUBJECTED TO FINAL SURVEY.



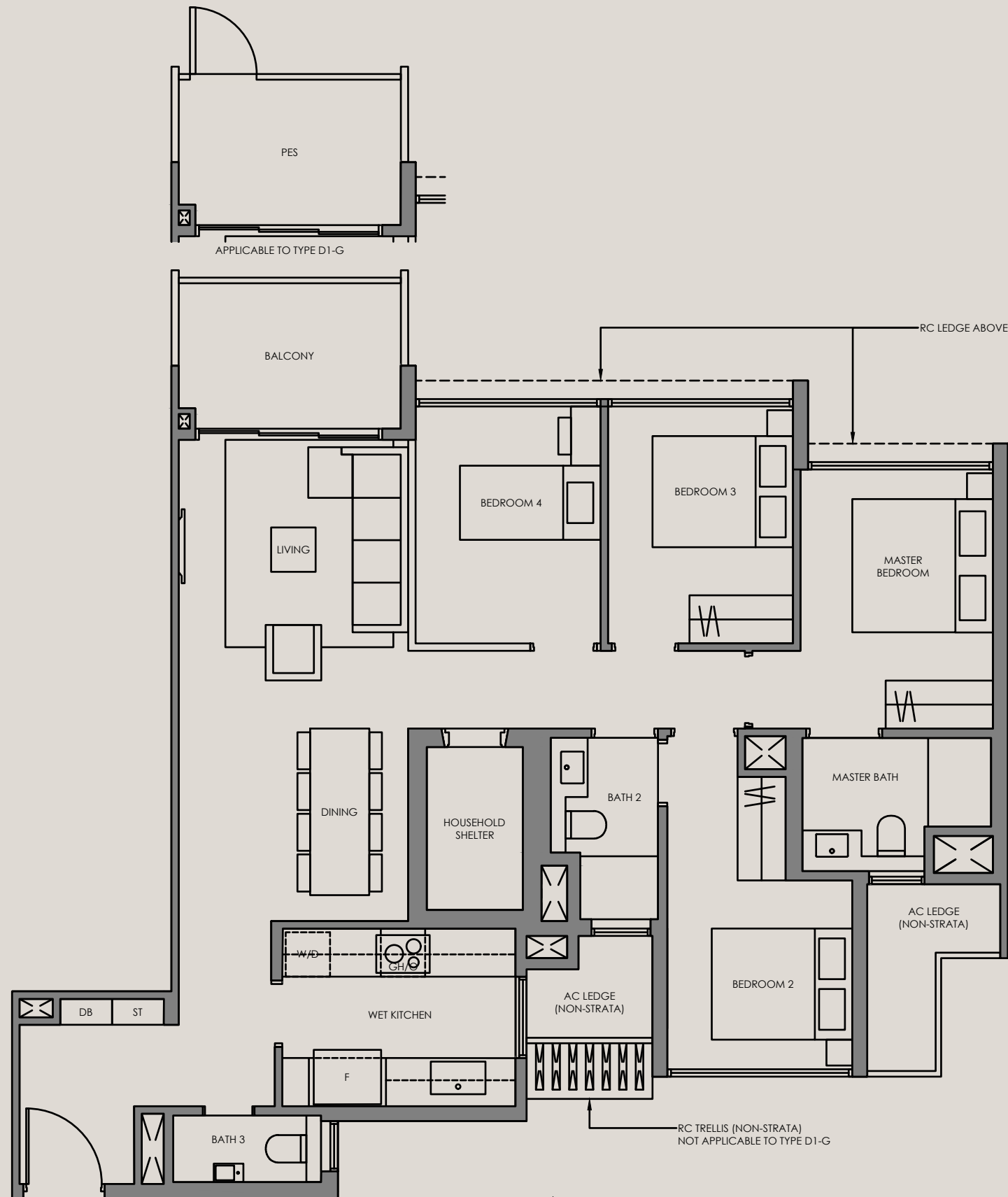
4-Bedroom

Type D1-G 104 SQM / 1119 SQFT
INCLUSIVE OF 6 SQM PES

TOWER 62
UNIT #01-40

Type D1 104 SQM / 1119 SQFT
INCLUSIVE OF 6 SQM BALCONY

TOWER 62
UNIT #02-40 TO #05-40

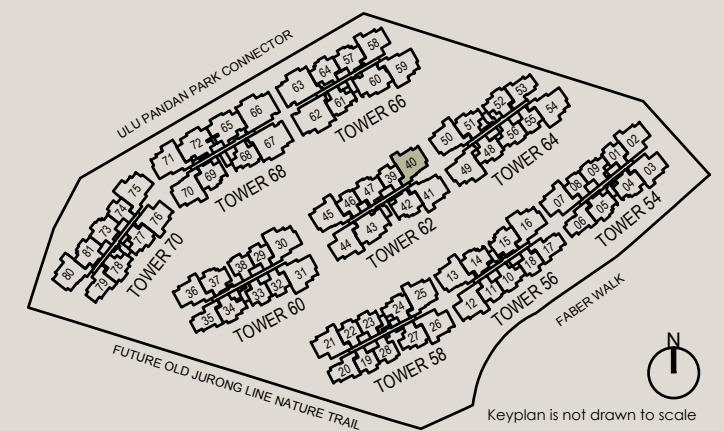


Legend (where applicable):

- F - Fridge
- P - Pantry
- O - Oven
- GH - Gas Hob
- IH - Induction Hob
- WD - Washer Dryer
- DB - Distribution Board
- ST - Store

*Mirror Image

ALL PLANS ARE SUBJECT TO AMENDMENTS AS MAY BE APPROVED BY THE RELEVANT AUTHORITIES.
FLOOR AREAS ARE APPROXIMATE MEASUREMENTS AND ARE SUBJECT TO FINAL SURVEY.



4-Bedroom

Type D2-G 104 SQM / 1119 SQFT
INCLUSIVE OF 6 SQM PES

TOWER	UNIT
58	#01-25
62	#01-45*
64	#01-50*
68	#01-70
70	#01-80*

Type D2 104 SQM / 1119 SQFT
INCLUSIVE OF 6 SQM BALCONY

TOWER	UNIT
58	#02-25 TO #05-25
62	#02-45* TO #05-45*
64	#02-50* TO #05-50*
68	#02-70 TO #05-70
70	#02-80* TO #05-80*

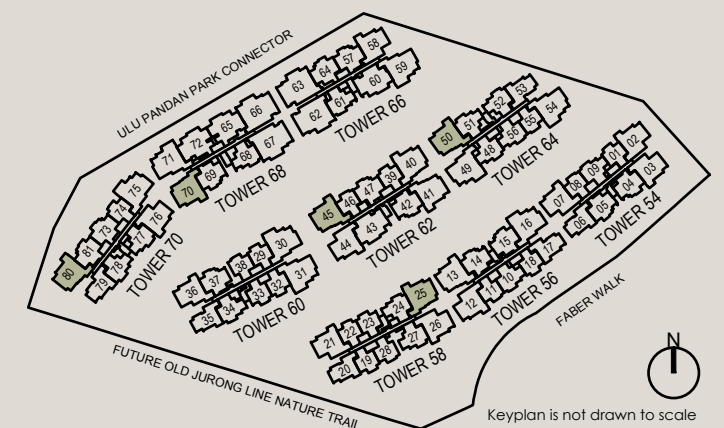
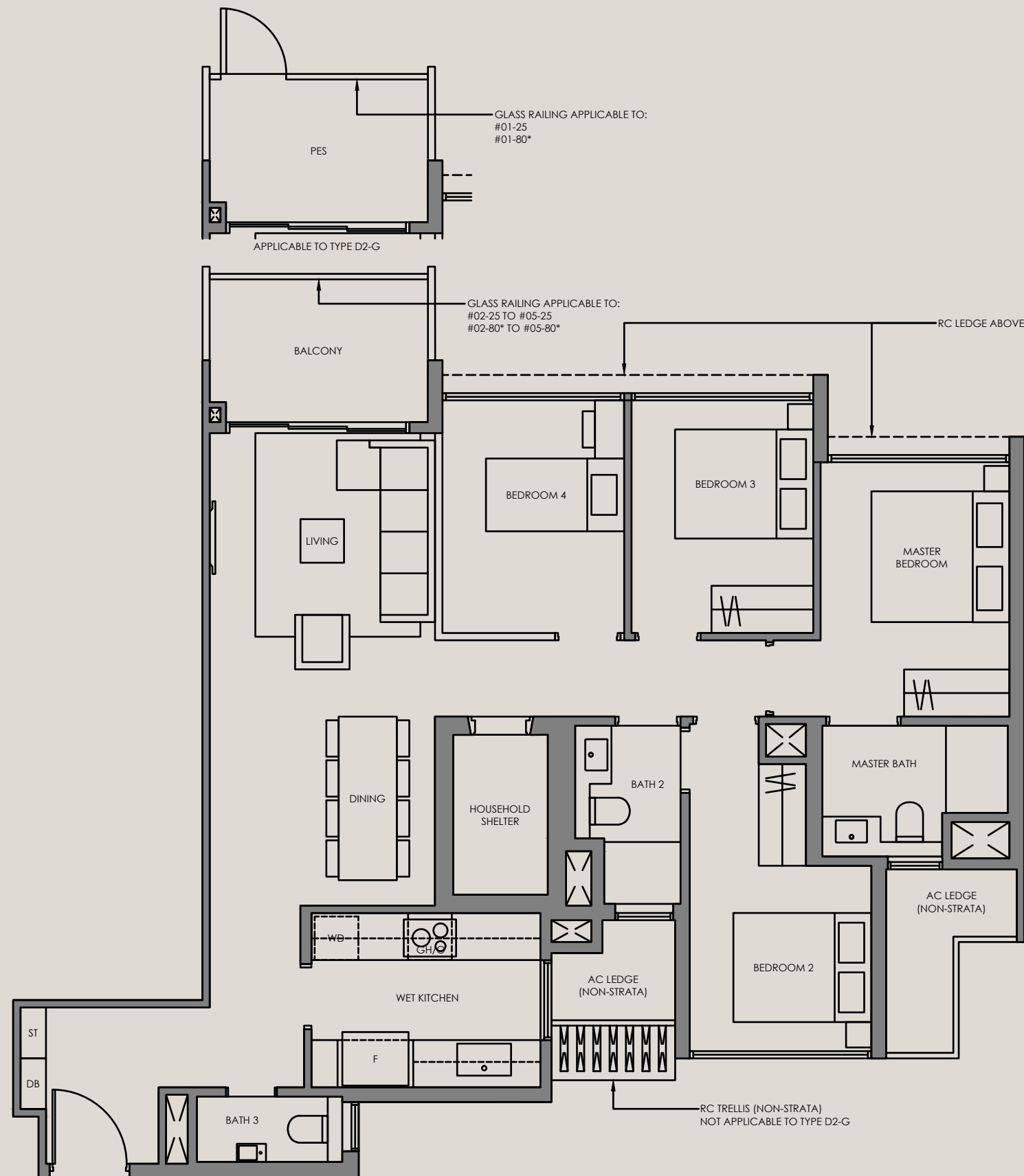


Legend (where applicable):

- F - Fridge
- IH - Induction Hob
- P - Pantry
- WD - Washer Dryer
- O - Oven
- DB - Distribution Board
- GH - Gas Hob
- ST - Store

*Mirror Image

ALL PLANS ARE SUBJECTED TO AMENDMENTS AS MAY BE APPROVED BY THE RELEVANT AUTHORITIES.
FLOOR AREAS ARE APPROXIMATE MEASUREMENTS AND ARE SUBJECTED TO FINAL SURVEY.



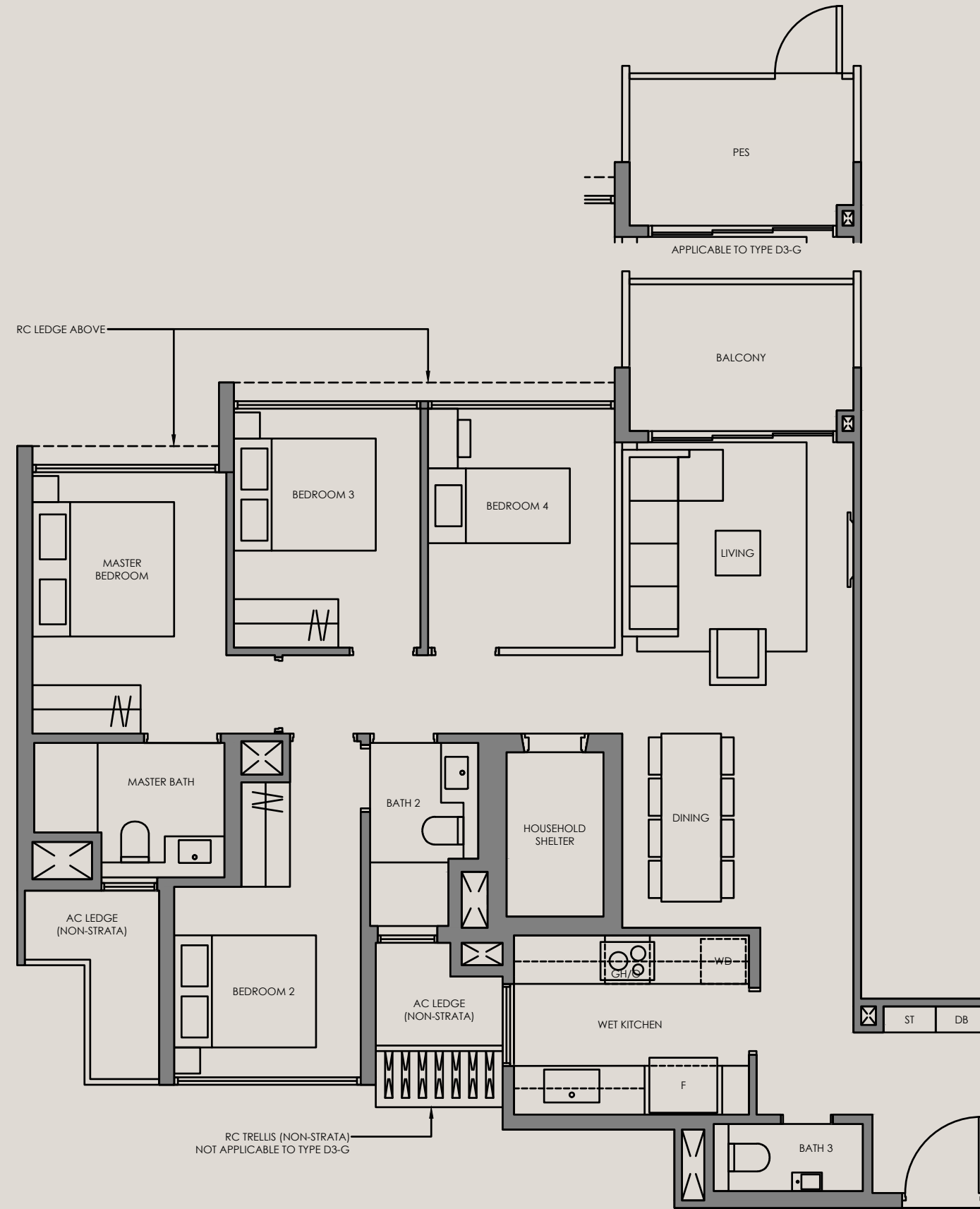
4-Bedroom

Type D3-G 104 SQM / 1119 SQFT
INCLUSIVE OF 6 SQM PES

TOWER	UNIT
56	#01-13
62	#01-41

Type D3 104 SQM / 1119 SQFT
INCLUSIVE OF 6 SQM BALCONY

TOWER	UNIT
56	#02-13 TO #05-13
62	#02-41 TO #05-41

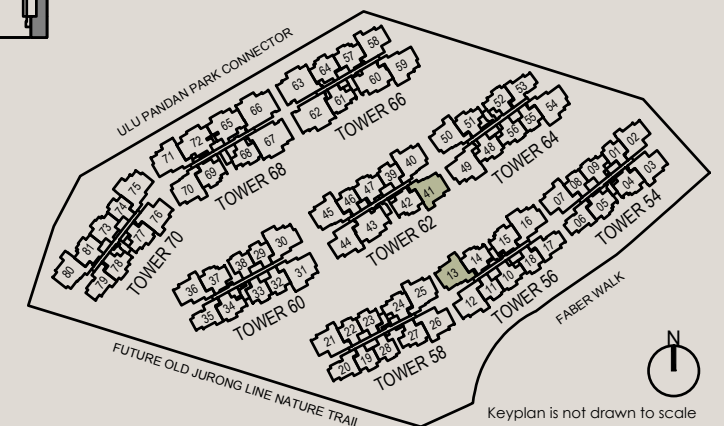
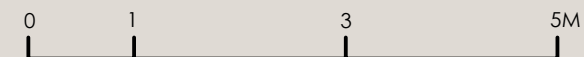


Legend (where applicable):

- F - Fridge
- P - Pantry
- O - Oven
- GH - Gas Hob
- IH - Induction Hob
- WD - Washer Dryer
- DB - Distribution Board
- ST - Store

*Mirror Image

ALL PLANS ARE SUBJECTED TO AMENDMENTS AS MAY BE APPROVED BY THE RELEVANT AUTHORITIES.
FLOOR AREAS ARE APPROXIMATE MEASUREMENTS AND ARE SUBJECTED TO FINAL SURVEY.



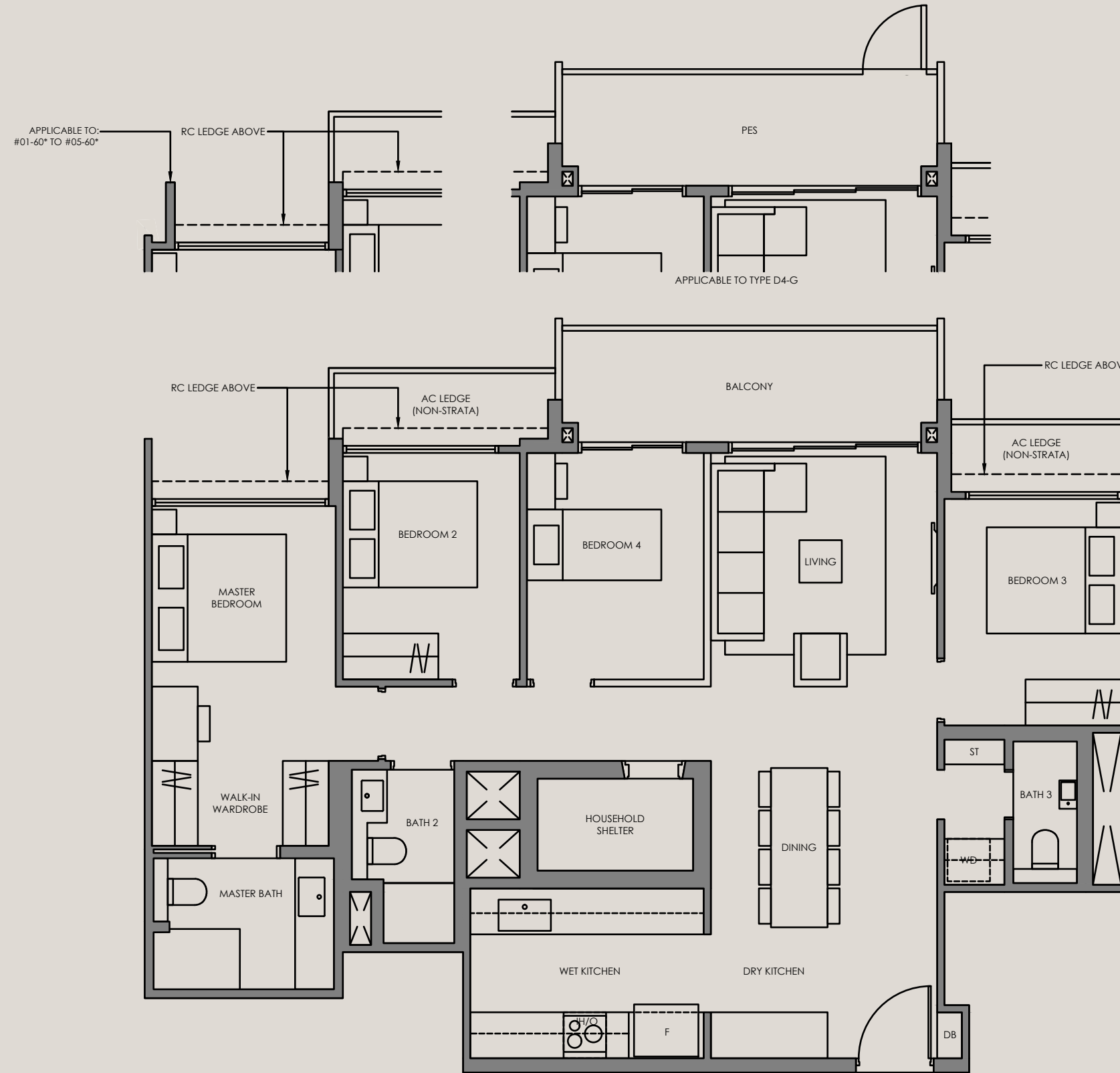
4-Bedroom

Type D4-G 112 SQM / 1206 SQFT
INCLUSIVE OF 9 SQM PES

TOWER	UNIT
62	#01-43
66	#01-60*

Type D4 112 SQM / 1206 SQFT
INCLUSIVE OF 9 SQM BALCONY

TOWER	UNIT
62	#02-43 TO #05-43
66	#02-60* TO #05-60*

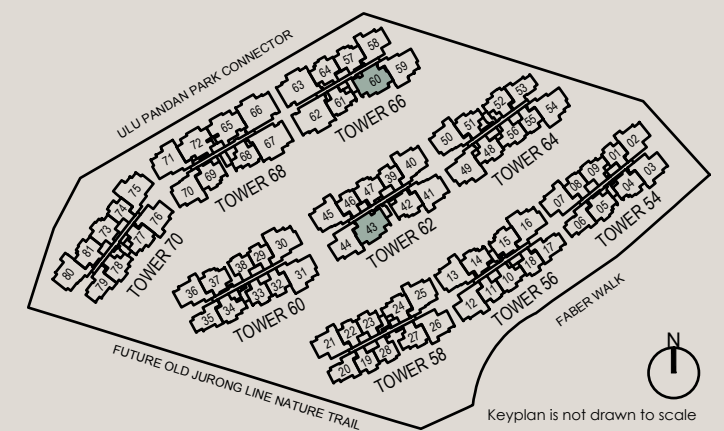


Legend (where applicable):

- F - Fridge
- P - Pantry
- O - Oven
- GH - Gas Hob
- IH - Induction Hob
- WD - Washer Dryer
- DB - Distribution Board
- ST - Store

*Mirror Image

ALL PLANS ARE SUBJECT TO AMENDMENTS AS MAY BE APPROVED BY THE RELEVANT AUTHORITIES. FLOOR AREAS ARE APPROXIMATE MEASUREMENTS AND ARE SUBJECT TO FINAL SURVEY.



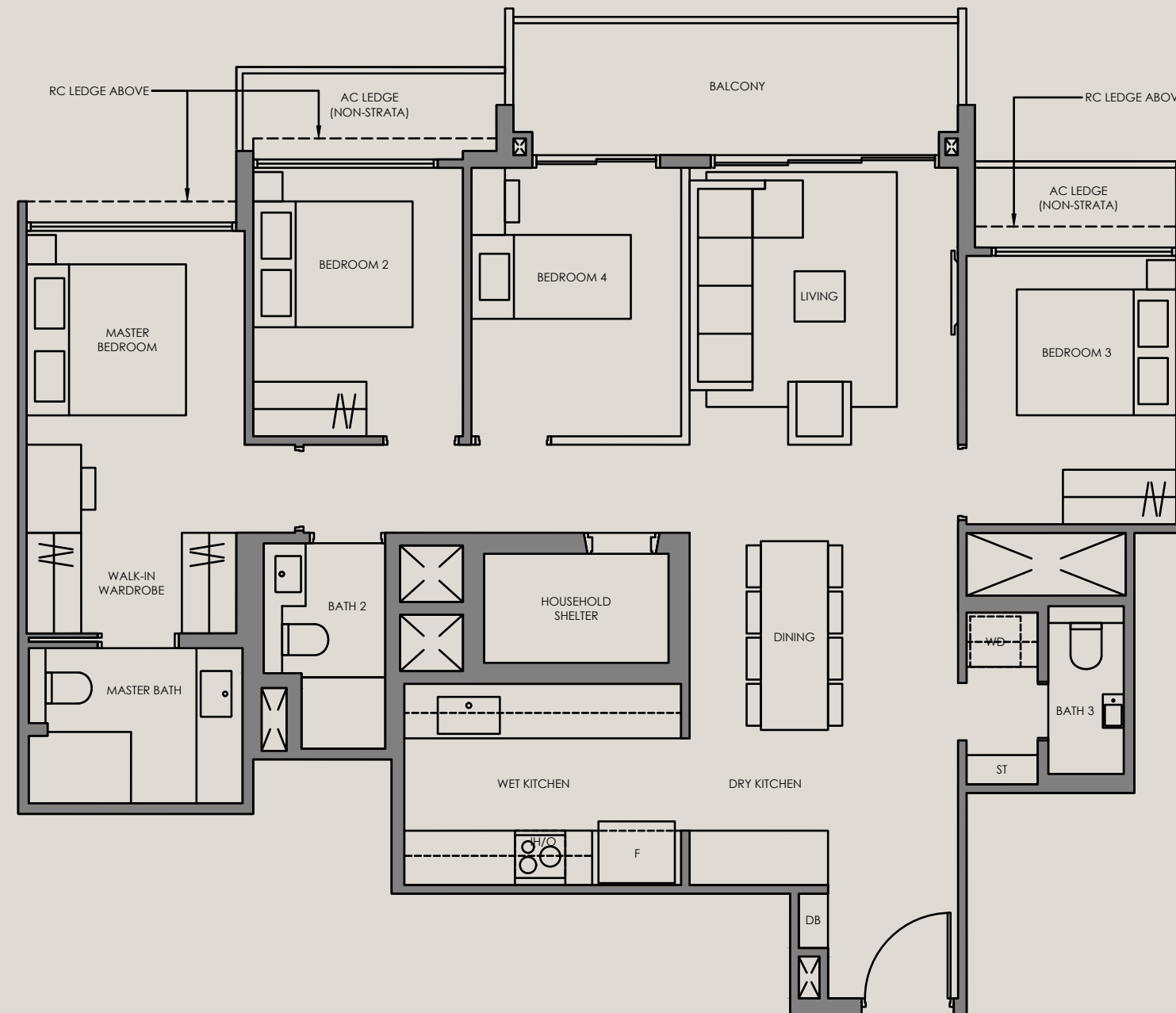
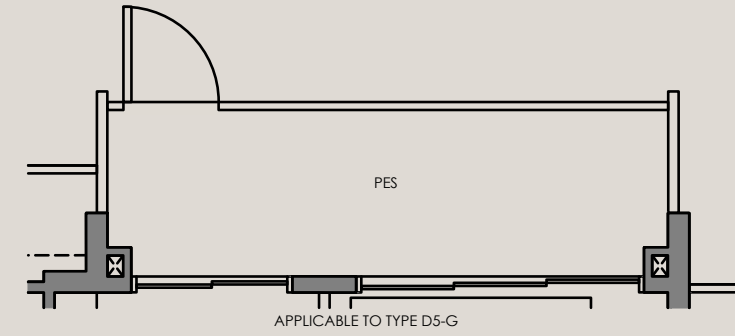
4-Bedroom

Type D5-G 113 SQM / 1216 SQFT
INCLUSIVE OF 9 SQM PES

TOWER	UNIT
68	#01-65*
	#01-72

Type D5 113 SQM / 1216 SQFT
INCLUSIVE OF 9 SQM BALCONY

TOWER	UNIT
68	#02-65* TO #05-65*
	#02-72 TO #05-72

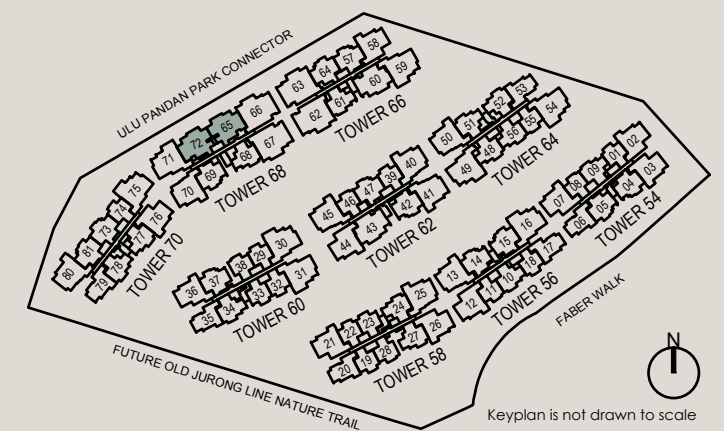


Legend (where applicable):

- F - Fridge
- P - Pantry
- O - Oven
- GH - Gas Hob
- IH - Induction Hob
- WD - Washer Dryer
- DB - Distribution Board
- ST - Store

*Mirror Image

ALL PLANS ARE SUBJECT TO AMENDMENTS AS MAY BE APPROVED BY THE RELEVANT AUTHORITIES.
FLOOR AREAS ARE APPROXIMATE MEASUREMENTS AND ARE SUBJECT TO FINAL SURVEY.



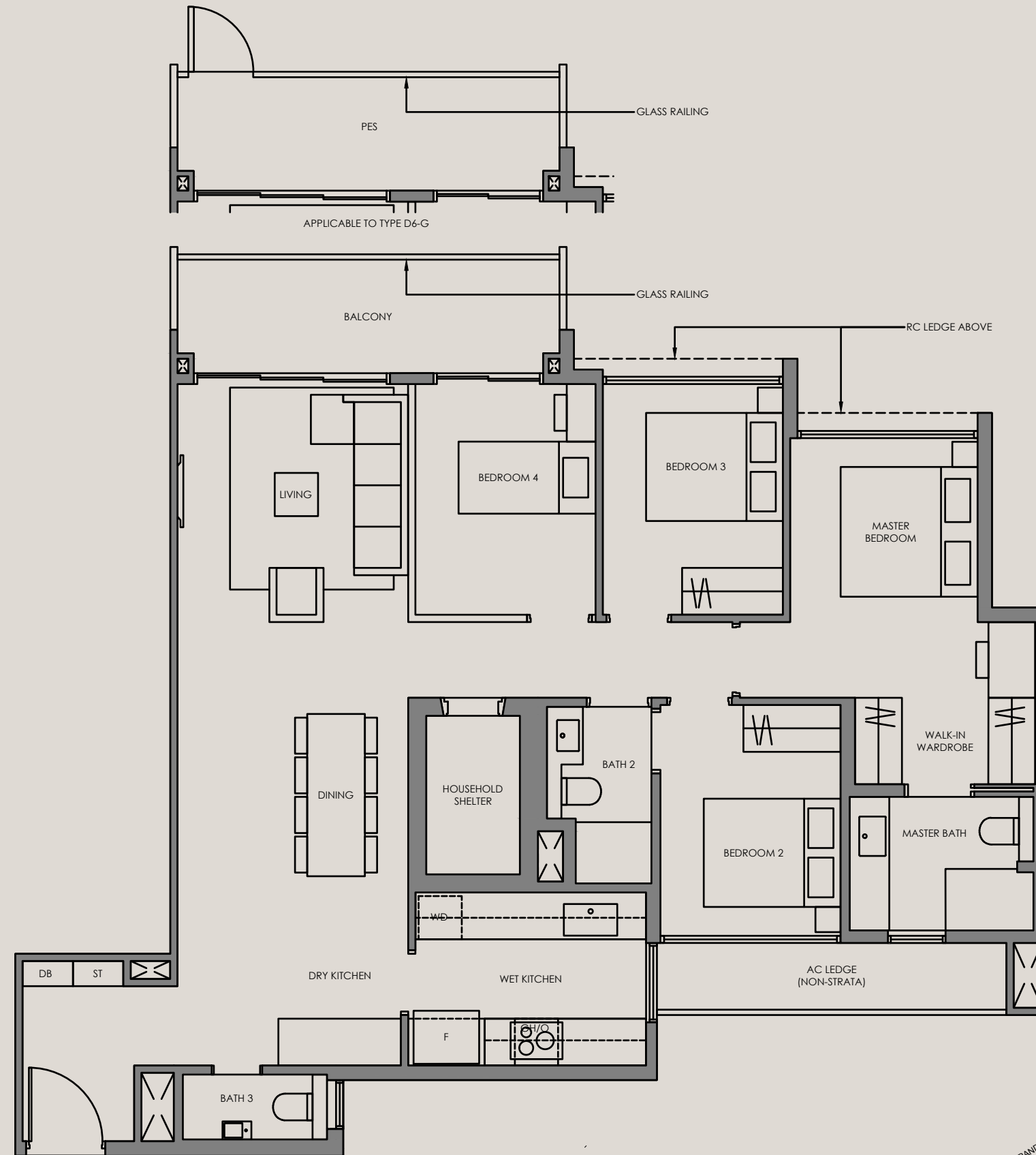
4-Bedroom

Type D6-G 118 SQM / 1270 SQFT
INCLUSIVE OF 9 SQM PES

TOWER	UNIT
60	#01-30 #01-31*
70	#01-75

Type D6 118 SQM / 1270 SQFT
INCLUSIVE OF 9 SQM BALCONY

TOWER	UNIT
60	#02-30 TO #05-30 #02-31* TO #05-31*
70	#02-75 TO #05-75

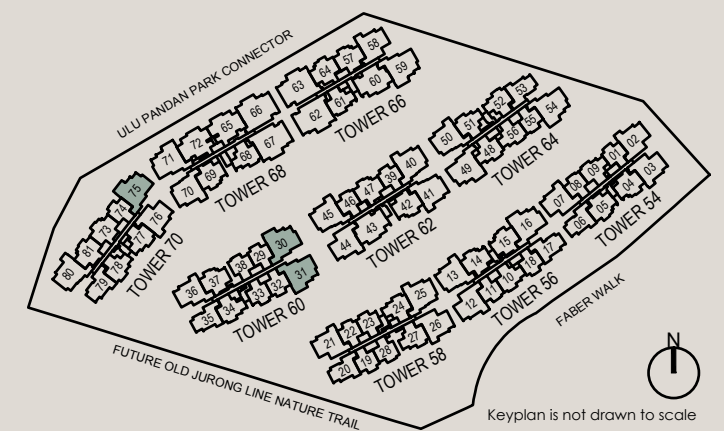


Legend (where applicable):

- F - Fridge
- P - Pantry
- O - Oven
- GH - Gas Hob
- IH - Induction Hob
- WD - Washer Dryer
- DB - Distribution Board
- ST - Store

*Mirror Image

ALL PLANS ARE SUBJECTED TO AMENDMENTS AS MAY BE APPROVED BY THE RELEVANT AUTHORITIES.
FLOOR AREAS ARE APPROXIMATE MEASUREMENTS AND ARE SUBJECTED TO FINAL SURVEY.



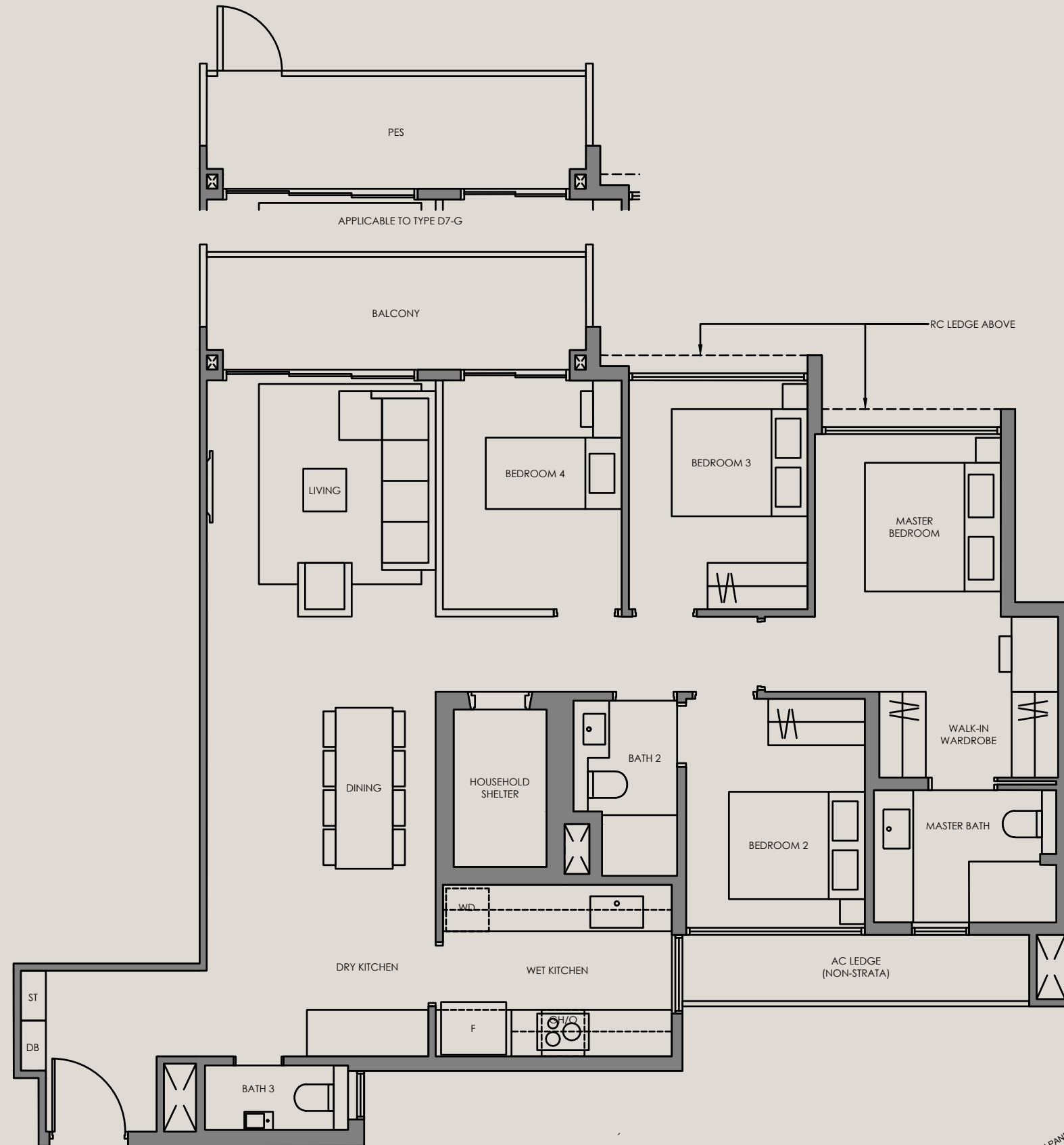
4-Bedroom

Type D7-G 118 SQM / 1270 SQFT
INCLUSIVE OF 9 SQM PES

TOWER	UNIT
64	#01-49
66	#01-59*

Type D7 118 SQM / 1270 SQFT
INCLUSIVE OF 9 SQM BALCONY

TOWER	UNIT
64	#02-49 TO #05-49
66	#02-59* TO #05-59*

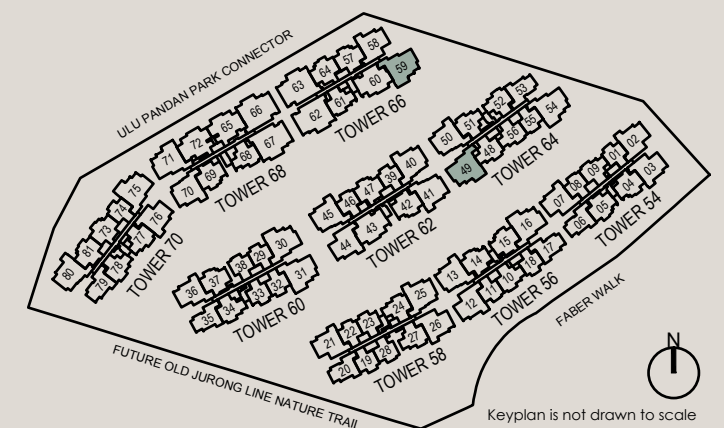
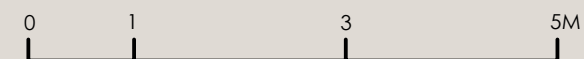


Legend (where applicable):

- F - Fridge
- P - Pantry
- O - Oven
- GH - Gas Hob
- IH - Induction Hob
- WD - Washer Dryer
- DB - Distribution Board
- ST - Store

*Mirror Image

ALL PLANS ARE SUBJECT TO AMENDMENTS AS MAY BE APPROVED BY THE RELEVANT AUTHORITIES. FLOOR AREAS ARE APPROXIMATE MEASUREMENTS AND ARE SUBJECT TO FINAL SURVEY.



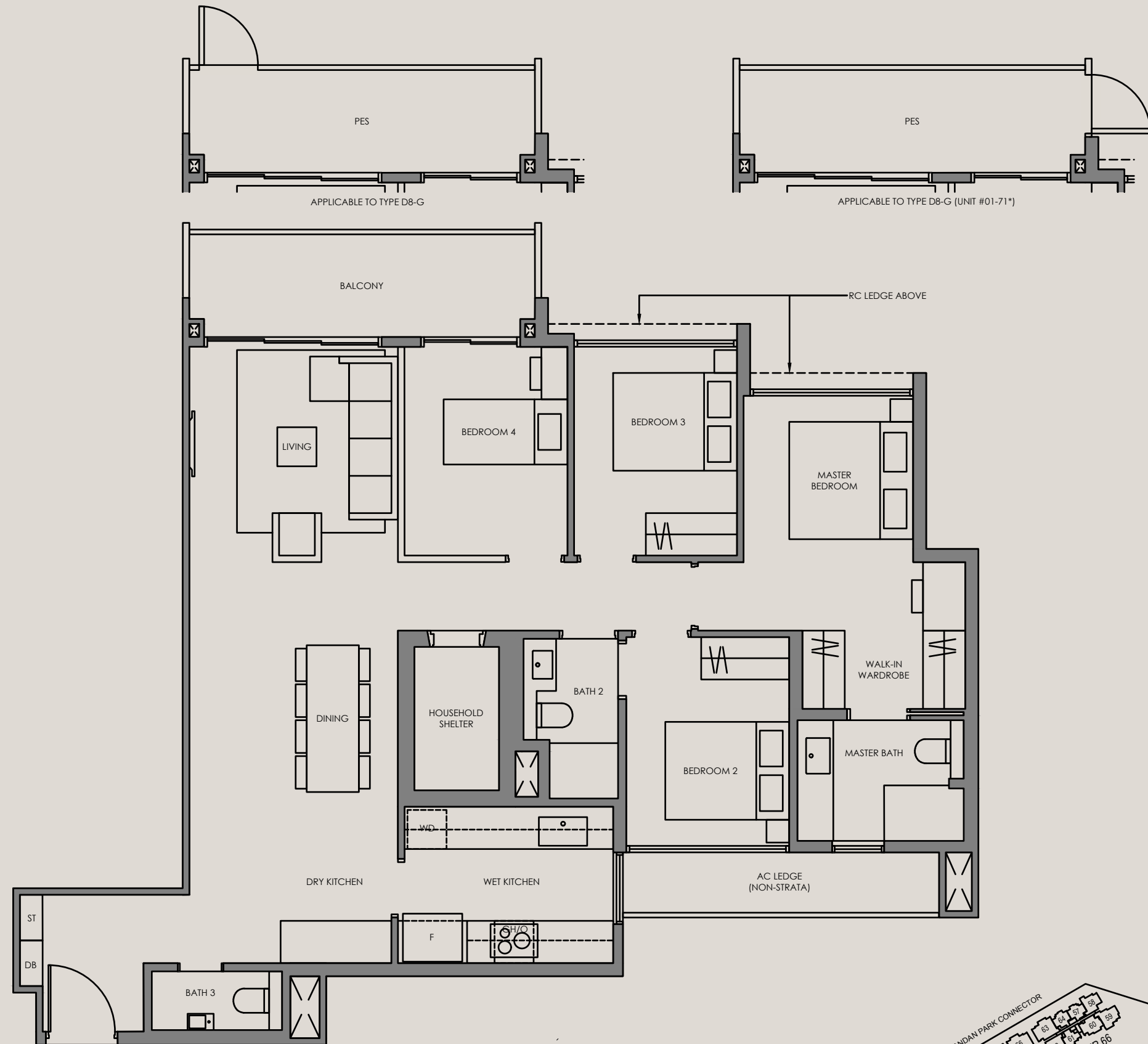
4-Bedroom

Type D8-G 118 SQM / 1270 SQFT
INCLUSIVE OF 9 SQM PES

TOWER	UNIT
56	#01-16
64	#01-54*
68	#01-71*

Type D8 118 SQM / 1270 SQFT
INCLUSIVE OF 9 SQM BALCONY

TOWER	UNIT
56	#02-16 TO #05-16
64	#02-54* TO #05-54*
68	#02-71* TO #05-71*

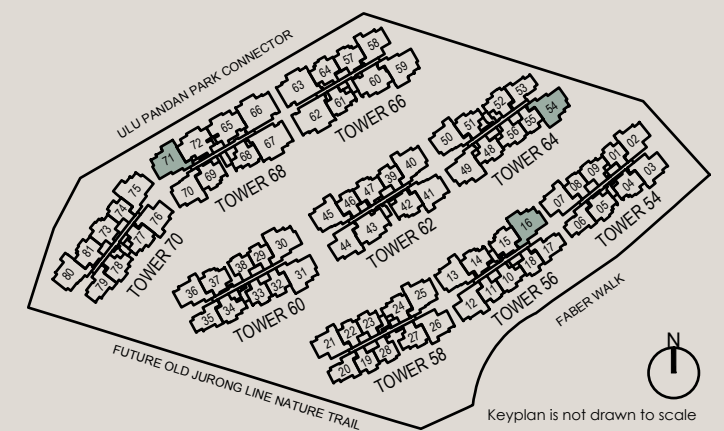


Legend (where applicable):

- F - Fridge
- P - Pantry
- O - Oven
- GH - Gas Hob
- IH - Induction Hob
- WD - Washer Dryer
- DB - Distribution Board
- ST - Store

*Mirror Image

ALL PLANS ARE SUBJECT TO AMENDMENTS AS MAY BE APPROVED BY THE RELEVANT AUTHORITIES. FLOOR AREAS ARE APPROXIMATE MEASUREMENTS AND ARE SUBJECT TO FINAL SURVEY.



Keyplan is not drawn to scale

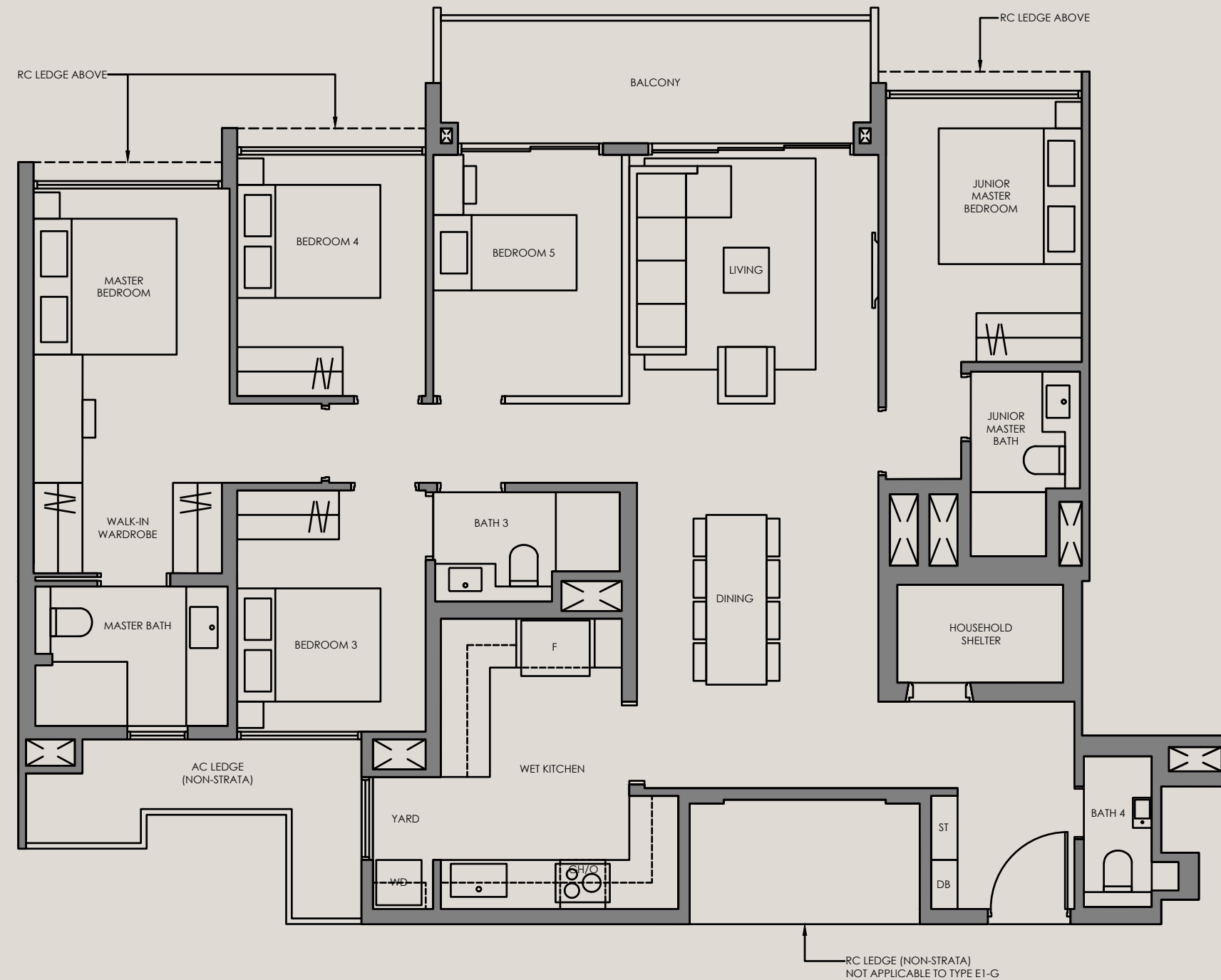
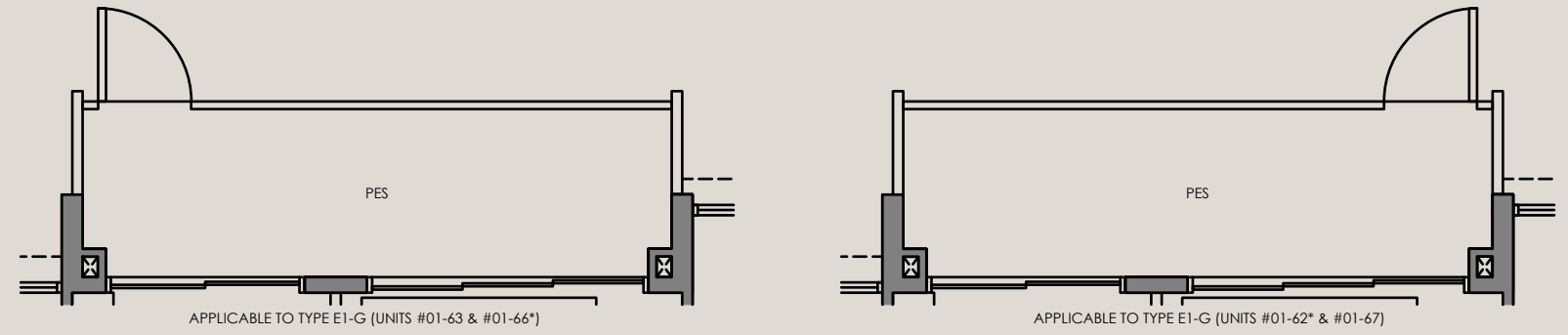
5-Bedroom

Type E1-G 138 SQM / 1485 SQFT
INCLUSIVE OF 10 SQM PES

TOWER	UNIT
66	#01-62* #01-63
68	#01-66* #01-67

Type E1 138 SQM / 1485 SQFT
INCLUSIVE OF 10 SQM BALCONY

TOWER	UNIT
66	#02-62* TO #05-62* #02-63 TO #05-63
68	#02-66* TO #05-66* #02-67 TO #05-67

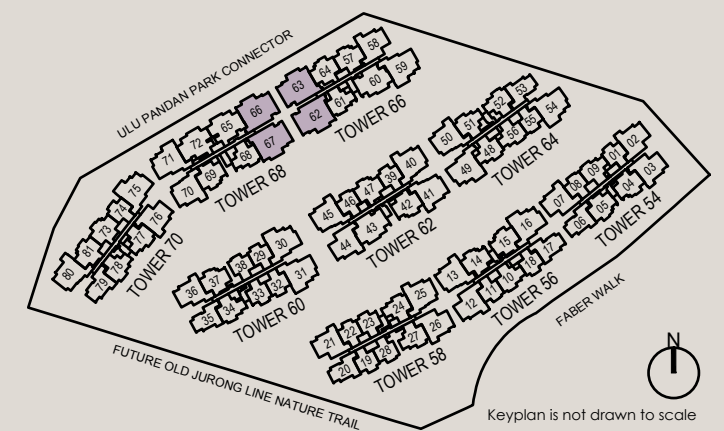


Legend (where applicable):

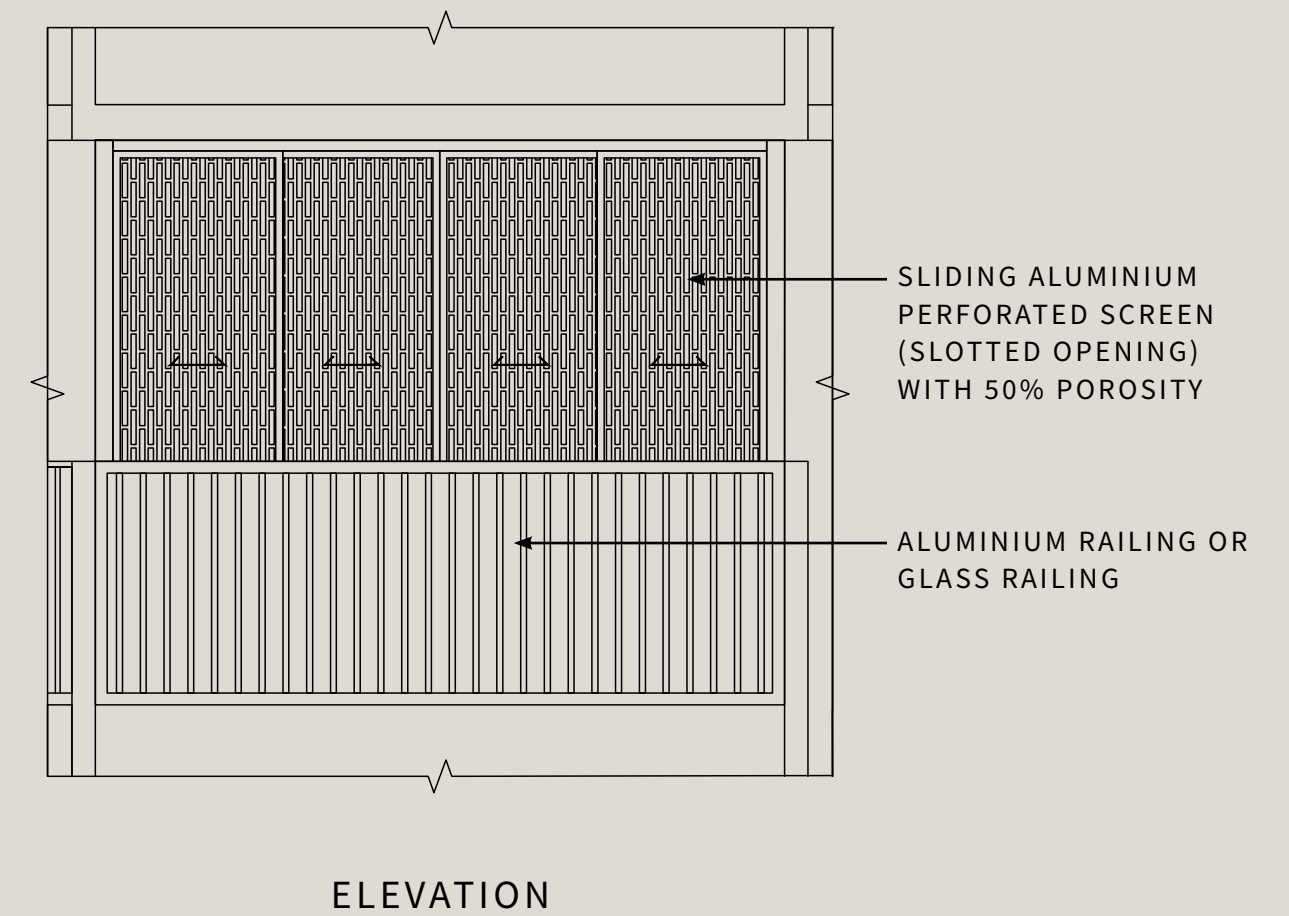
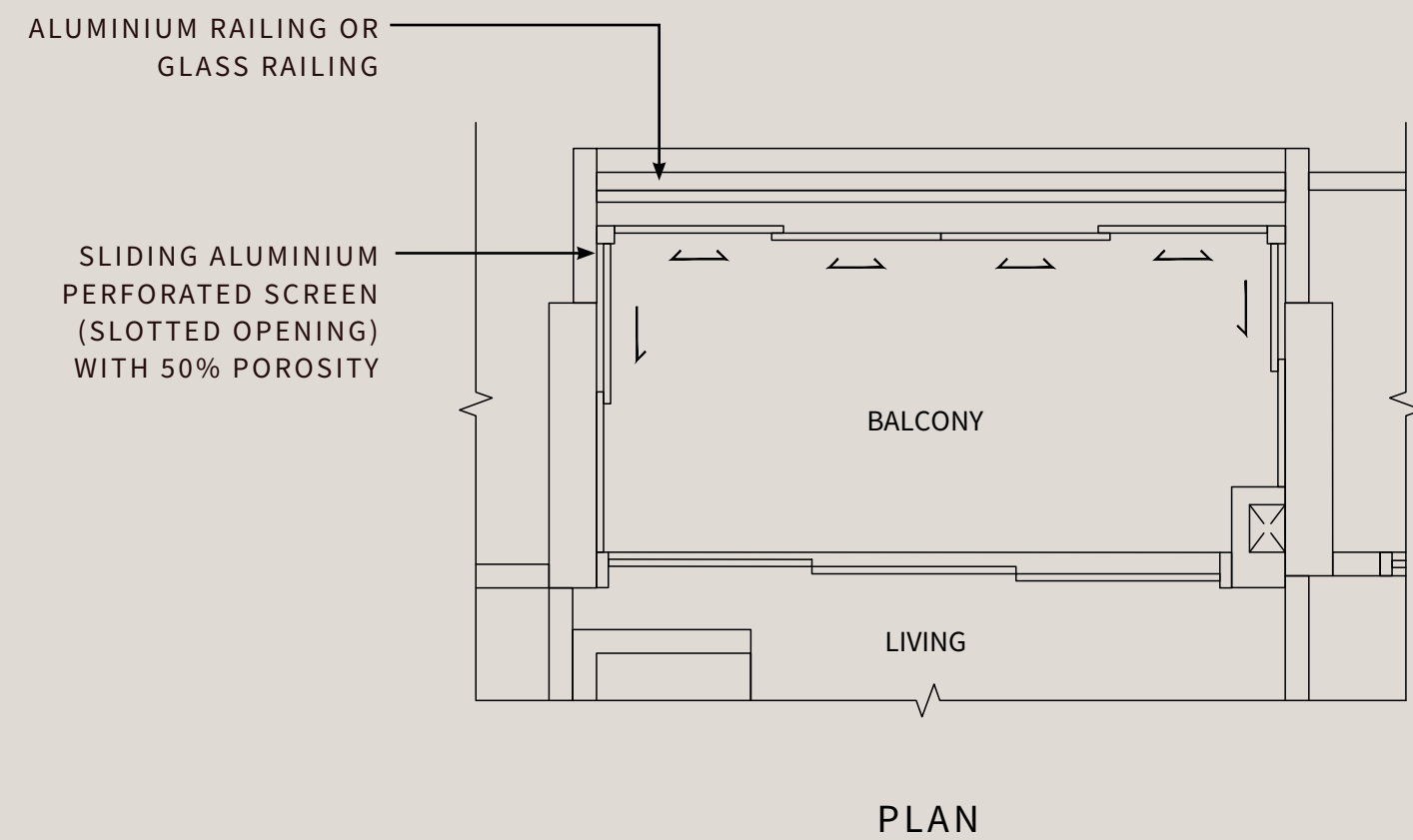
- F - Fridge
- P - Pantry
- O - Oven
- GH - Gas Hob
- IH - Induction Hob
- WD - Washer Dryer
- DB - Distribution Board
- ST - Store

*Mirror Image

ALL PLANS ARE SUBJECT TO AMENDMENTS AS MAY BE APPROVED BY THE RELEVANT AUTHORITIES. FLOOR AREAS ARE APPROXIMATE MEASUREMENTS AND ARE SUBJECT TO FINAL SURVEY.



APPROVED BALCONY SCREEN



Note:

- 1 Approved balcony screen will not be provided and the purchaser to bear the cost for installing the balcony screen
- 2 The balcony shall not be enclosed unless with the approved balcony screen
- 3 Number of balcony screen panels varies according to different unit types
- 4 Hatching pattern is indicative
- 5 To refer to the approved balcony screen mock-up installed



Name of housing project: Faber Residence • Name of housing developer: Faber Residence Pte. Ltd. (Co. Reg. No. 202452263E) • Licence No. of housing developer: C1529 • Tenure of land: leasehold 99 years commencing on 24 February 2025 • Encumbrances on land: Caveat IJ/952053R and Mortgage IJ/907178R (in escrow) in favour of DBS Bank Ltd. • Location of the housing project: Lot 09584L MK05 at Faber Walk • Expected date of vacant possession: 31/12/2030 • Expected date of legal completion: 31/12/2033

DISCLAIMER: The information and contents in this brochure are current as at the time of production and are provided on an “as is” and “as available” basis and are not to be relied upon as statements or representations of fact, offers or warranties (whether expressly or impliedly) by Faber Residence Pte. Ltd. (the “Developer”, being the developer of Faber Residence) or its agents. While all reasonable care has been taken in preparing this brochure, neither the Developer nor its agents shall be held responsible and/or liable for any damage or loss (whether directly or indirectly) suffered by any person due to any inaccuracies, omissions, errors, the completeness of the information and contents herein or any reliance placed on such information or contents. All renderings, illustrations, pictures, photographs and other graphic representations and references are artist’s impression(s) only and cannot be regarded as representations of fact and may be subject to further changes and deviation as made by the Developer or the Developer’s consultants or as required and/or directed by the relevant authorities. Nothing herein shall form part of an offer or contract or be construed as any representation by the Developer or its agents. The renderings, illustrations, pictures, photographs and other graphic representations and references herein may not be to scale, and any areas and measurements stated herein are approximate and are subject to final survey. Some of the materials, fittings, equipment, finishes, installations and appliances depicted herein may be the subject of interior design treatment which are not provided under the Sale and Purchase Agreement (“SPA”). To the extent any brand, colour and/or model of any materials, fittings, equipment, finishes, installations and appliances depicted herein are provided under the SPA, they shall be subject to the Developer’s and/or the architect’s selection and market availability. The SPA embodies all the terms and conditions between the Developer and the purchaser and supersedes and cancels in all respects all previous representations, warranties, promises, inducements or statements of intention, whether written or oral made by the Developer and/or its agents which are not embodied in the SPA. The Developer reserves any and all copyright, intellectual property, design and other proprietary rights in and to this brochure, including all or any part of the information, artwork or content therein. Nothing herein shall be copied, modified, distributed, reproduced, stored or used, in any manner whatsoever, save with the express written consent of the Developer.