



VELA  
BAY 首航





# EASTSIDE CONNECTIVITY, BAYSIDE SERENITY.

## SHOPPING & DINING

- 3 MRT stops Parkway Parade
- 9 MRT stops The Shoppes at Marina Bay Sands
- 4 mins drive East Coast Lagoon Food Village
- 5 mins drive Bedok Mall
- 6 mins drive Jewel Changi Airport
- 8 mins drive Changi City Point
- 10 mins drive i12 Katong
- 10 mins drive Joo Chiat Complex
- 12 mins drive PLQ Mall

## BUSINESS

- 6 mins drive Changi Business Park
- Singapore Expo
- 12 mins drive Suntec City
- Tai Seng / Ubi
- 13 mins drive Paya Lebar Quarter
- 15 mins drive Central Business District (CBD)
- Marina Bay Financial Centre

## SCHOOLS

- Within 1km Temasek Primary School
- Temasek Secondary School
- 5 mins drive Bedok Green Primary
- Victoria School (Secondary)
- 7 mins drive Tao Nan School

- 8 mins drive Bedok View Secondary
- 10 mins drive Singapore University of Technology and Design (SUTD)
- 13 mins drive Victoria Junior College
- 15 mins drive Haig Girls' School

## PARKS

- East Coast Park
- Gardens by the Bay
- Lucky Gardens
- Sennett Avenue Linear Park

BAYSHORE DRIVE

BAYSHORE ROAD

EAST COAST EXPRESSWAY (ECP)

BAYSHORE WALK

# SITE PLAN

## ZONE 1 BAY COAST (1<sup>ST</sup> STOREY)

- |                               |                            |
|-------------------------------|----------------------------|
| 1 Vela Bay Lounge (Clubhouse) | 12 Calisthenics Corner     |
| 2 Toilet/Changing Room        | 13 Coral Terrace           |
| 3 Accessible Toilet           | 14 Coral Pods              |
| 4 The Vela Pool               | 15 Coral Garden            |
| 5 Aqua Bed                    | 16 The Vela Pavilion (BBQ) |
| 6 Aqua Spa Seat (Jacuzzi)     | 17 The Stern Pavilion      |
| 7 Kid's Pool                  | 18 The Bow Pavilion        |
| 8 Parent's Deck               | 19 Mist Garden             |
| 9 Poolside Coast Cabana       | 20 Link Bridge             |
| 10 Pool Deck                  | 21 Outdoor Shower Point    |
| 11 Swing Garden               |                            |

## ZONE 2 THE VELA CLUB (BASEMENT 1)

- |                                     |                                                                                   |
|-------------------------------------|-----------------------------------------------------------------------------------|
| 22 Gymnasium                        | 28 Outdoor Fitness Corner                                                         |
| 23 Toilet/Changing Room /Steam Room | 29 The Port Lounge                                                                |
| 24 Accessible Toilet                | 30 Vela Bay Clubhouse (1st Storey)<br>- Vela Function Room<br>- Bay Function Room |
| 25 Wellness Deck                    | 31 Recreational Tennis Court                                                      |
| 26 The Starboard Pavilion           |                                                                                   |
| 27 Kid's Playground                 |                                                                                   |

## ANCILLARY (BASEMENT 1)

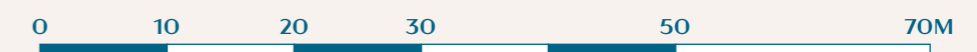
- |                                   |                                    |
|-----------------------------------|------------------------------------|
| A Arrival Lobby                   | H Lift 2 (Vela Bay Clubhouse)      |
| B Guard House                     | I Management Office                |
| C Service Ramp                    | J Substation                       |
| D Side Gate 1 (to Bayshore Walk)  | K Main Distribution Frame Room     |
| E Side Gate 2 (to MRT)            | L Genset                           |
| F Side Gate 3 (to Bayshore Drive) | M Water Bulk Meter                 |
| G Lift 1 (Arrival Lobby)          | N Telecommunication Equipment Room |

## ANCILLARY (BASEMENT 2)

- |              |                        |
|--------------|------------------------|
| O Bin Centre | P Consumer Switchrooms |
|--------------|------------------------|

## LEGEND

- Ventilation Shaft
- Water Tank at Roof



BP APPROVAL NO.: A1716-00045-2025-BP01 DATED: 9 FEBRUARY 2026





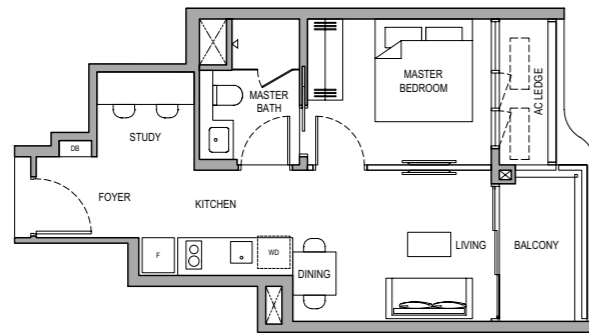
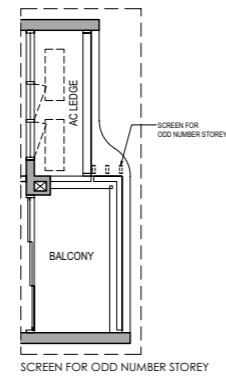
# 1-BEDROOM + STUDY

## TYPE 1BR + S (A)

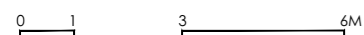
45 SQM / 484 SQFT  
(INCLUSIVE OF 5 SQM BALCONY)

BLOCK 1

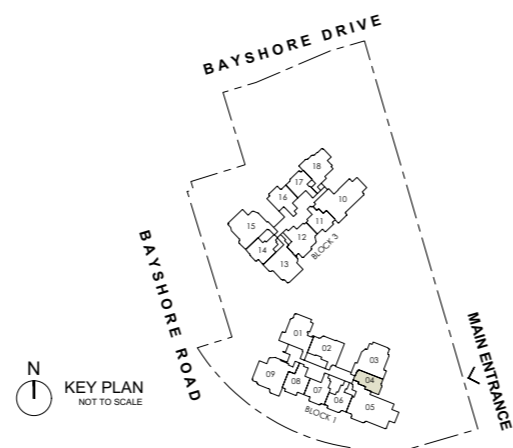
#05-04 to #31-04



- LEGEND:
- F FRIDGE
  - WD WASHER CUM DRYER
  - DB DISTRIBUTION BOARD
  - AC AIR-CONDITIONER (EXCLUDED FROM STRATA AREA)
  - RC REINFORCED CONCRETE (EXCLUDED FROM STRATA AREA)
  - ☐ VOID SPACE (EXCLUDED FROM STRATA AREA)
  - ☐ RAINWATER DOWNPIPE FOR BALCONY (EXCLUDED FROM STRATA AREA)
  - ▨ WALLS NOT ALLOWED TO BE HACKED / ALTERED / DRILLED
  - ☐ AIR CONDITIONING CONDENSING UNIT



ALL PLANS ARE SUBJECT TO CHANGES BY THE RELEVANT AUTHORITIES.  
MEASUREMENTS ARE APPROXIMATE ONLY AND SUBJECT TO FINAL SURVEY.  
INFORMATION ACCURATE AT POINT OF PRINTING.  
BP NO.: A1716-00045-2025-8P01 DATED 09-FEB-2026



N  
KEY PLAN  
NOT TO SCALE

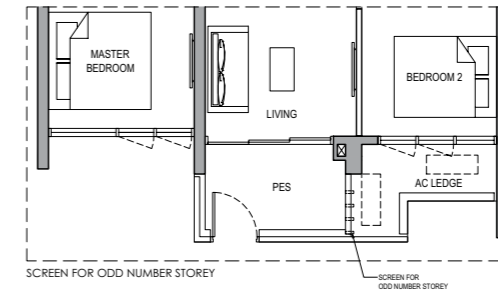
# 2-BEDROOM

## TYPE 2BR (A) PES

55 SQM / 592 SQFT  
(INCLUSIVE OF 5 SQM PES)

BLOCK 3

#01-11

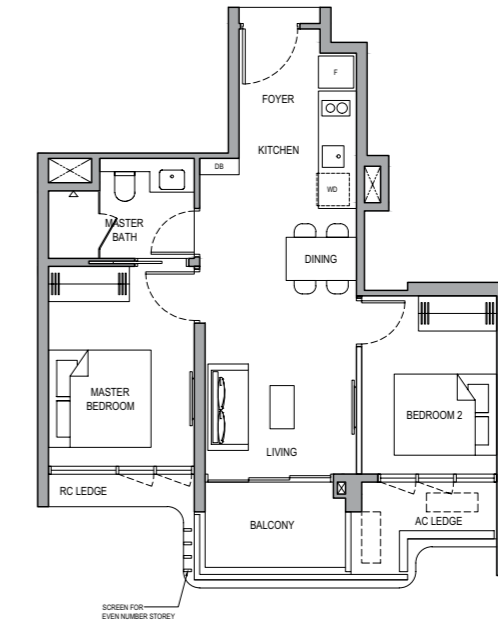


## TYPE 2BR (A)

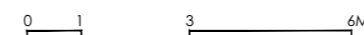
55 SQM / 592 SQFT  
(INCLUSIVE OF 5 SQM BALCONY)

BLOCK 3

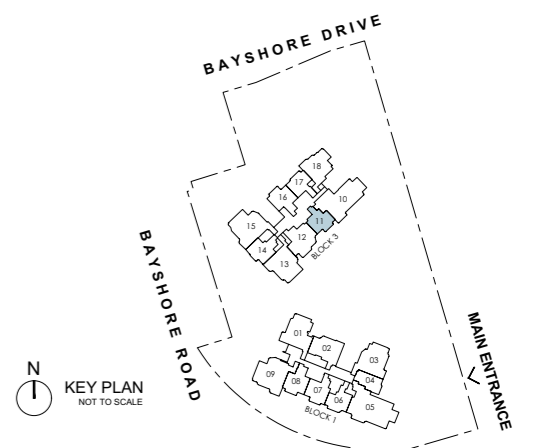
#02-11 to #30-11



- LEGEND:
- F FRIDGE
  - WD WASHER CUM DRYER
  - DB DISTRIBUTION BOARD
  - AC AIR-CONDITIONER (EXCLUDED FROM STRATA AREA)
  - RC REINFORCED CONCRETE (EXCLUDED FROM STRATA AREA)
  - ☐ VOID SPACE (EXCLUDED FROM STRATA AREA)
  - ☐ RAINWATER DOWNPIPE FOR BALCONY (EXCLUDED FROM STRATA AREA)
  - ▨ WALLS NOT ALLOWED TO BE HACKED / ALTERED / DRILLED
  - ☐ AIR CONDITIONING CONDENSING UNIT



ALL PLANS ARE SUBJECT TO CHANGES BY THE RELEVANT AUTHORITIES.  
MEASUREMENTS ARE APPROXIMATE ONLY AND SUBJECT TO FINAL SURVEY.  
INFORMATION ACCURATE AT POINT OF PRINTING.  
BP NO.: A1716-00045-2025-8P01 DATED 09-FEB-2026



N  
KEY PLAN  
NOT TO SCALE

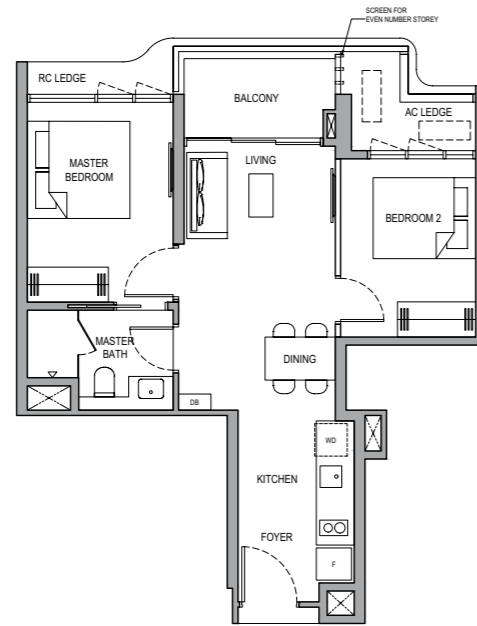
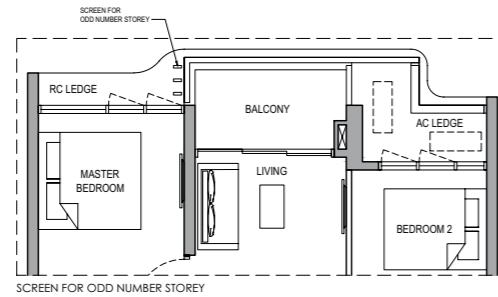
# 2-BEDROOM

## TYPE 2BR (B)

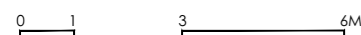
55 SQM / 592 SQFT  
(INCLUSIVE OF 5 SQM BALCONY)

BLOCK 3

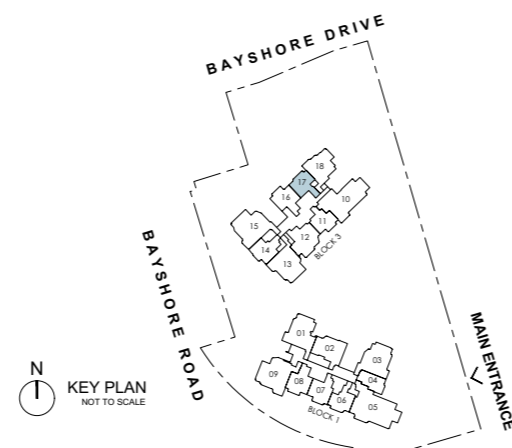
#03-17 to #30-17



- LEGEND:
- F FRIDGE
  - WD WASHER CUM DRYER
  - DB DISTRIBUTION BOARD
  - AC AIR-CONDITIONER (EXCLUDED FROM STRATA AREA)
  - RC REINFORCED CONCRETE (EXCLUDED FROM STRATA AREA)
  - VOID SPACE (EXCLUDED FROM STRATA AREA)
  - RAINWATER DOWNPIPE FOR BALCONY (EXCLUDED FROM STRATA AREA)
  - WALLS NOT ALLOWED TO BE HACKED / ALTERED / DRILLED
  - AIR CONDITIONING CONDENSING UNIT



ALL PLANS ARE SUBJECT TO CHANGES BY THE RELEVANT AUTHORITIES. MEASUREMENTS ARE APPROXIMATE ONLY AND SUBJECT TO FINAL SURVEY. INFORMATION ACCURATE AT POINT OF PRINTING. BP NO.: A1716-00045-2025-8P01 DATED 09-FEB-2026



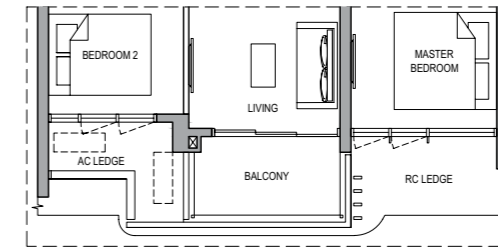
# 2-BEDROOM

## TYPE 2BR (C)

55 SQM / 592 SQFT  
(INCLUSIVE OF 5 SQM BALCONY)

BLOCK 1

#05-06

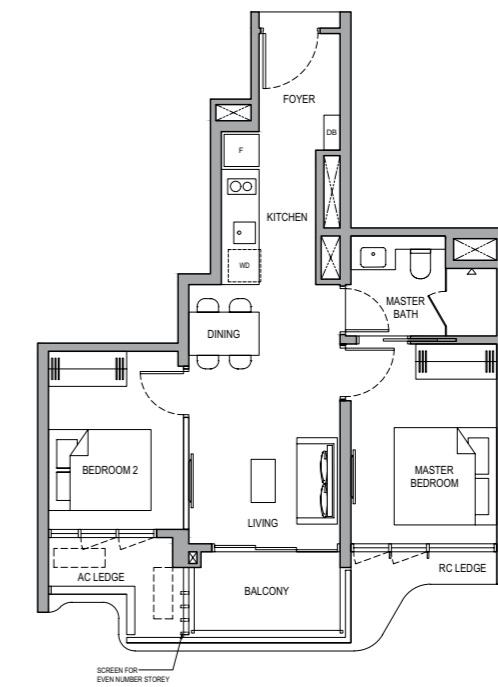
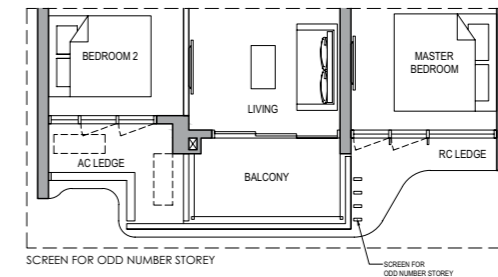


## TYPE 2BR (C)

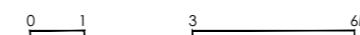
55 SQM / 592 SQFT  
(INCLUSIVE OF 5 SQM BALCONY)

BLOCK 1

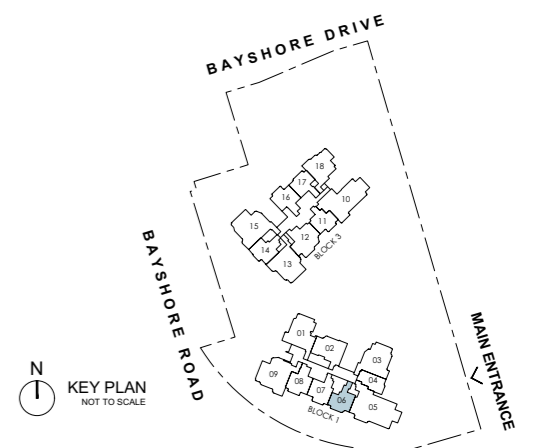
#06-06 to #30-06



- LEGEND:
- F FRIDGE
  - WD WASHER CUM DRYER
  - DB DISTRIBUTION BOARD
  - AC AIR-CONDITIONER (EXCLUDED FROM STRATA AREA)
  - RC REINFORCED CONCRETE (EXCLUDED FROM STRATA AREA)
  - VOID SPACE (EXCLUDED FROM STRATA AREA)
  - RAINWATER DOWNPIPE FOR BALCONY (EXCLUDED FROM STRATA AREA)
  - WALLS NOT ALLOWED TO BE HACKED / ALTERED / DRILLED
  - AIR CONDITIONING CONDENSING UNIT



ALL PLANS ARE SUBJECT TO CHANGES BY THE RELEVANT AUTHORITIES. MEASUREMENTS ARE APPROXIMATE ONLY AND SUBJECT TO FINAL SURVEY. INFORMATION ACCURATE AT POINT OF PRINTING. BP NO.: A1716-00045-2025-8P01 DATED 09-FEB-2026

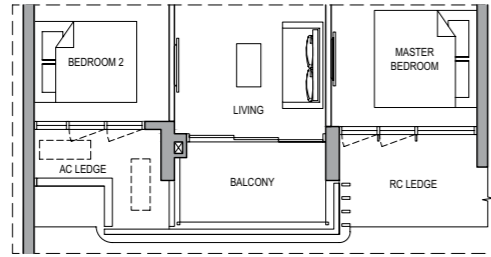


# 2-BEDROOM PREMIUM

## TYPE 2BR P (A)

64 SQM / 689 SQFT  
(INCLUSIVE OF 5 SQM BALCONY)

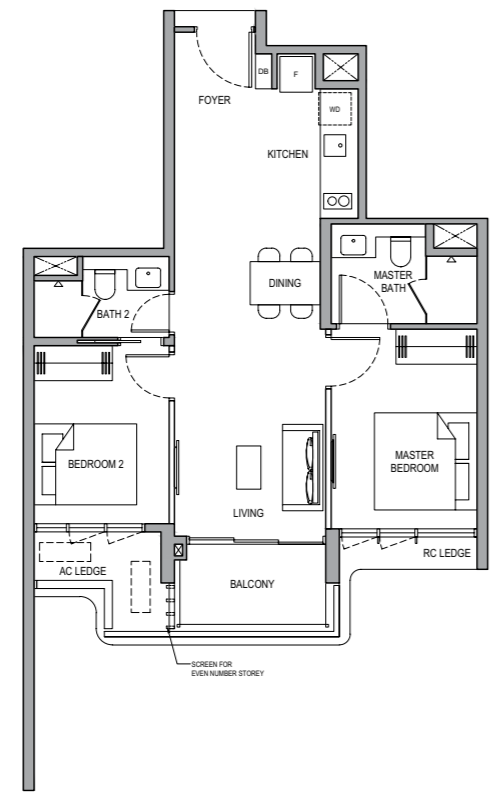
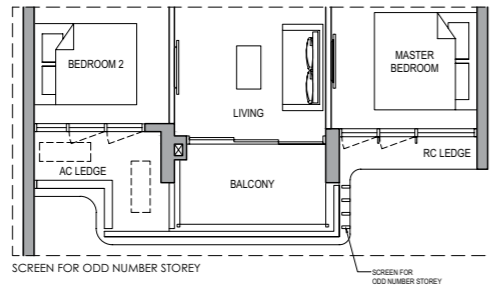
BLOCK 1  
#05-08



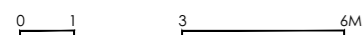
## TYPE 2BR P (A)

64 SQM / 689 SQFT  
(INCLUSIVE OF 5 SQM BALCONY)

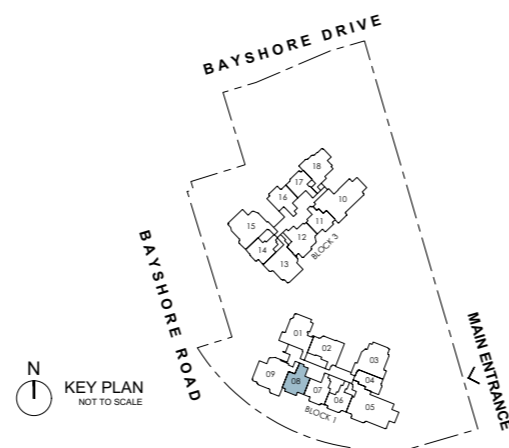
BLOCK 1  
#06-08 to #31-08



- LEGEND:
- F FRIDGE
  - WD WASHER CUM DRYER
  - DB DISTRIBUTION BOARD
  - AC AIR-CONDITIONER (EXCLUDED FROM STRATA AREA)
  - RC REINFORCED CONCRETE (EXCLUDED FROM STRATA AREA)
  - VOID SPACE (EXCLUDED FROM STRATA AREA)
  - RAINWATER DOWNPIPE FOR BALCONY (EXCLUDED FROM STRATA AREA)
  - WALLS NOT ALLOWED TO BE HACKED / ALTERED / DRILLED
  - AIR CONDITIONING CONDENSING UNIT



ALL PLANS ARE SUBJECT TO CHANGES BY THE RELEVANT AUTHORITIES.  
MEASUREMENTS ARE APPROXIMATE ONLY AND SUBJECT TO FINAL SURVEY.  
INFORMATION ACCURATE AT POINT OF PRINTING.  
BP NO.: A1716-00045-2025-8P01 DATED 09-FEB-2025

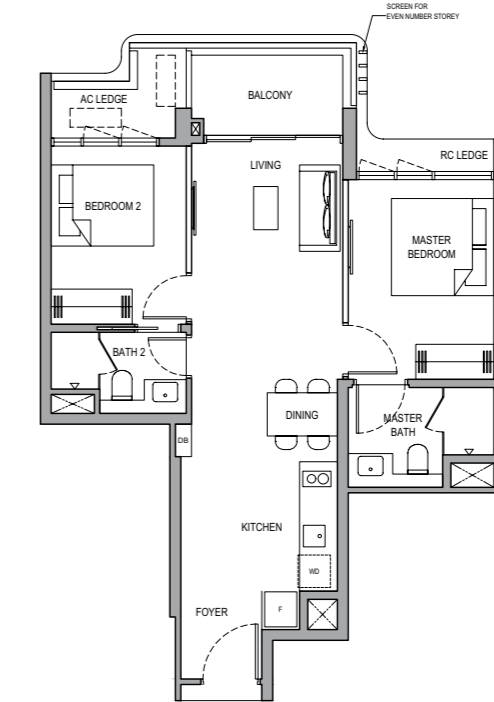
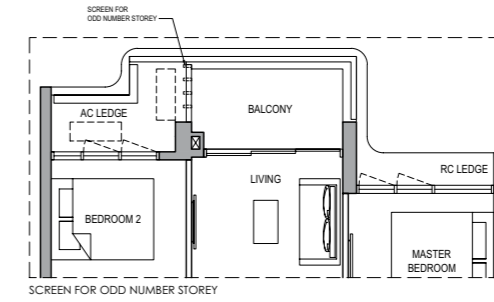


# 2-BEDROOM PREMIUM

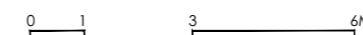
## TYPE 2BR P (B)

64 SQM / 689 SQFT  
(INCLUSIVE OF 5 SQM BALCONY)

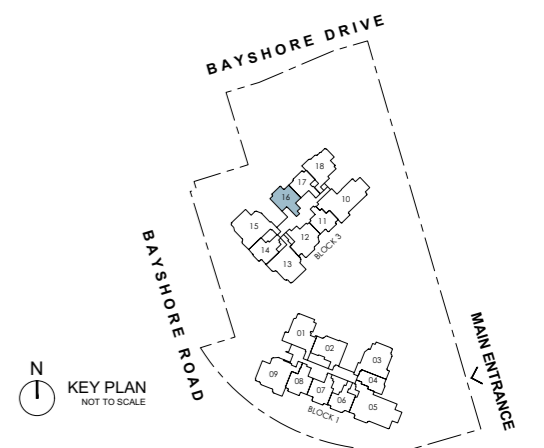
BLOCK 3  
#03-16 to #30-16



- LEGEND:
- F FRIDGE
  - WD WASHER CUM DRYER
  - DB DISTRIBUTION BOARD
  - AC AIR-CONDITIONER (EXCLUDED FROM STRATA AREA)
  - RC REINFORCED CONCRETE (EXCLUDED FROM STRATA AREA)
  - VOID SPACE (EXCLUDED FROM STRATA AREA)
  - RAINWATER DOWNPIPE FOR BALCONY (EXCLUDED FROM STRATA AREA)
  - WALLS NOT ALLOWED TO BE HACKED / ALTERED / DRILLED
  - AIR CONDITIONING CONDENSING UNIT



ALL PLANS ARE SUBJECT TO CHANGES BY THE RELEVANT AUTHORITIES.  
MEASUREMENTS ARE APPROXIMATE ONLY AND SUBJECT TO FINAL SURVEY.  
INFORMATION ACCURATE AT POINT OF PRINTING.  
BP NO.: A1716-00045-2025-8P01 DATED 09-FEB-2025

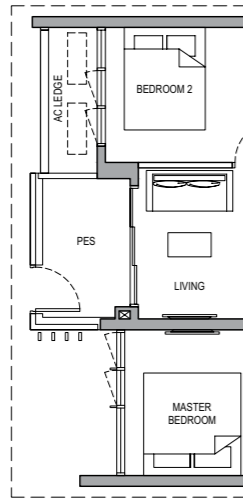


# 2-BEDROOM PREMIUM

## TYPE 2BR P (C) PES

63 SQM / 678 SQFT  
(INCLUSIVE OF 5 SQM PES)

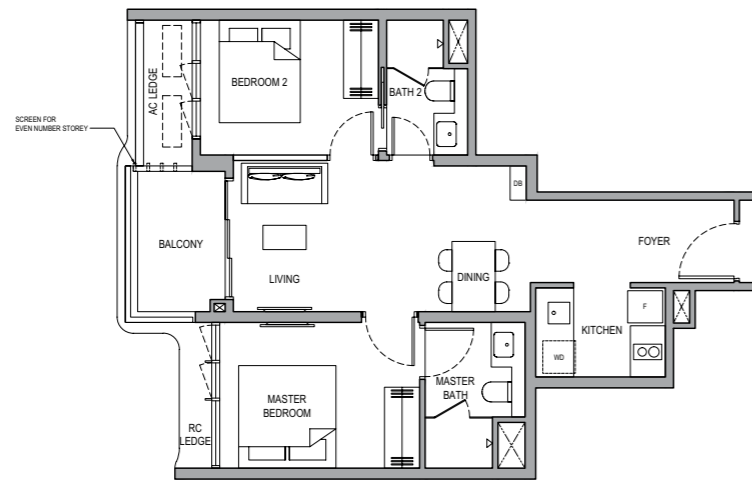
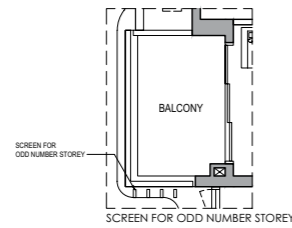
BLOCK 3  
#01-14



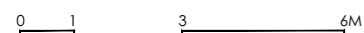
## TYPE 2BR P (C)

63 SQM / 678 SQFT  
(INCLUSIVE OF 5 SQM BALCONY)

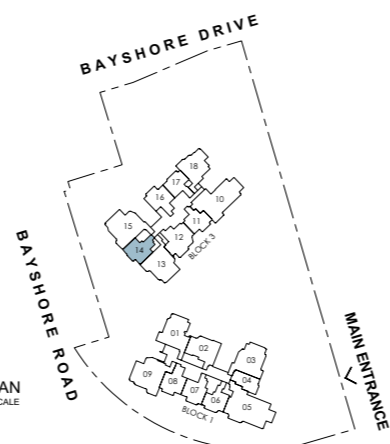
BLOCK 3  
#02-14 to #31-14



- LEGEND:
- F FRIDGE
  - WD WASHER CUM DRYER
  - DB DISTRIBUTION BOARD
  - AC AIR-CONDITIONER (EXCLUDED FROM STRATA AREA)
  - RC REINFORCED CONCRETE (EXCLUDED FROM STRATA AREA)
  - VOID SPACE (EXCLUDED FROM STRATA AREA)
  - RAINWATER DOWNPIPE FOR BALCONY (EXCLUDED FROM STRATA AREA)
  - WALLS NOT ALLOWED TO BE HACKED / ALTERED / DRILLED
  - AIR CONDITIONING CONDENSING UNIT



ALL PLANS ARE SUBJECT TO CHANGES BY THE RELEVANT AUTHORITIES.  
MEASUREMENTS ARE APPROXIMATE ONLY AND SUBJECT TO FINAL SURVEY.  
INFORMATION ACCURATE AT POINT OF PRINTING.  
BP NO.: A1716-00045-2025-8P01 DATED 09-FEB-2026

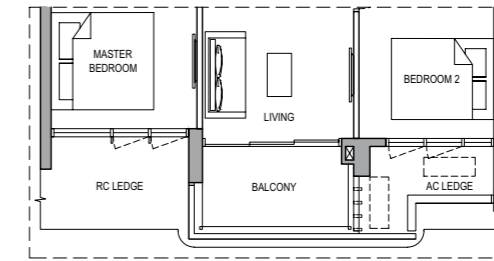


# 2-BEDROOM PREMIUM

## TYPE 2BR P (D)

63 SQM / 678 SQFT  
(INCLUSIVE OF 5 SQM BALCONY)

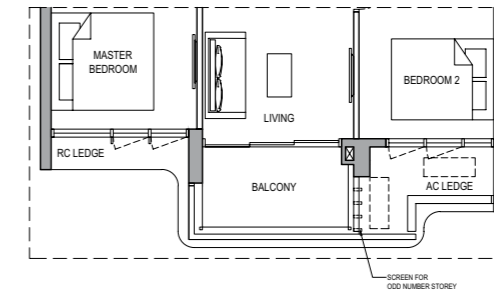
BLOCK 1  
#05-07



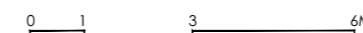
## TYPE 2BR P (D)

63 SQM / 678 SQFT  
(INCLUSIVE OF 5 SQM BALCONY)

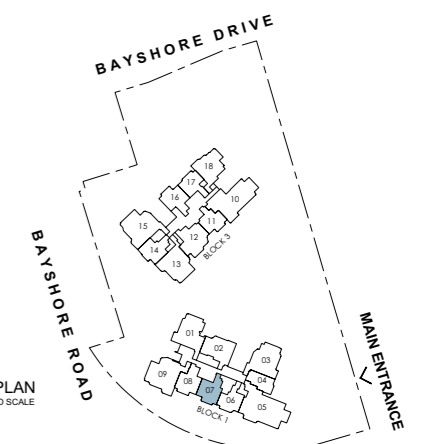
BLOCK 1  
#06-07 to #31-07



- LEGEND:
- F FRIDGE
  - WD WASHER CUM DRYER
  - DB DISTRIBUTION BOARD
  - AC AIR-CONDITIONER (EXCLUDED FROM STRATA AREA)
  - RC REINFORCED CONCRETE (EXCLUDED FROM STRATA AREA)
  - VOID SPACE (EXCLUDED FROM STRATA AREA)
  - RAINWATER DOWNPIPE FOR BALCONY (EXCLUDED FROM STRATA AREA)
  - WALLS NOT ALLOWED TO BE HACKED / ALTERED / DRILLED
  - AIR CONDITIONING CONDENSING UNIT



ALL PLANS ARE SUBJECT TO CHANGES BY THE RELEVANT AUTHORITIES.  
MEASUREMENTS ARE APPROXIMATE ONLY AND SUBJECT TO FINAL SURVEY.  
INFORMATION ACCURATE AT POINT OF PRINTING.  
BP NO.: A1716-00045-2025-8P01 DATED 09-FEB-2026



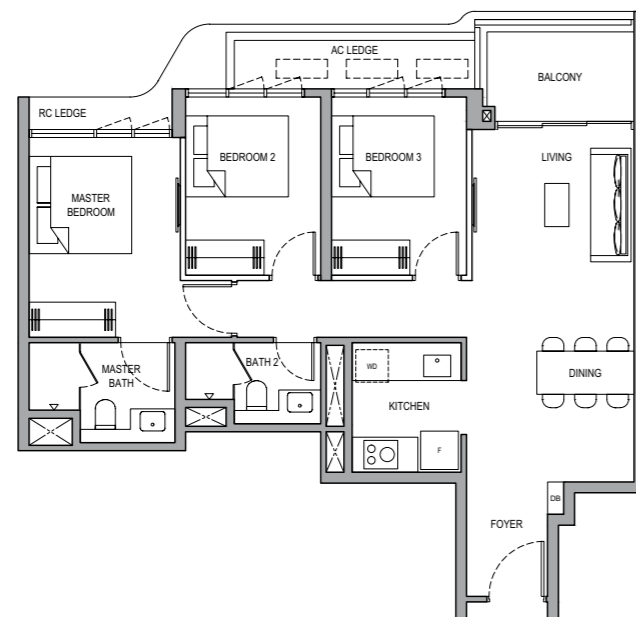
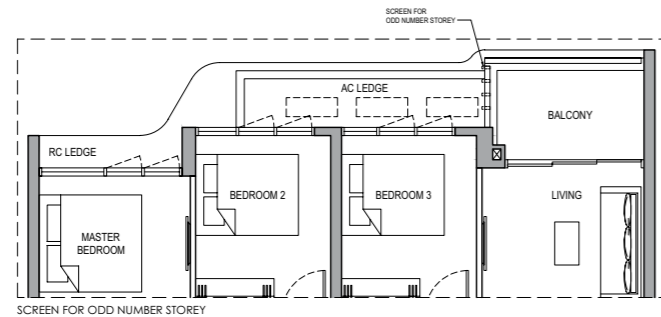
# 3-BEDROOM

## TYPE 3BR (A)

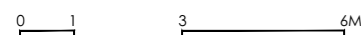
82 SQM / 883 SQFT  
(INCLUSIVE OF 6 SQM BALCONY)

BLOCK 1

#05-02 to #30-02



- LEGEND:
- F FRIDGE
  - WD WASHER CUM DRYER
  - DB DISTRIBUTION BOARD
  - AC AIR-CONDITIONER (EXCLUDED FROM STRATA AREA)
  - RC REINFORCED CONCRETE (EXCLUDED FROM STRATA AREA)
  - ⊠ VOID SPACE (EXCLUDED FROM STRATA AREA)
  - ⊠ RAINWATER DOWNPIPE FOR BALCONY (EXCLUDED FROM STRATA AREA)
  - ⊠ WALLS NOT ALLOWED TO BE HACKED / ALTERED / DRILLED
  - ⊠ AIR CONDITIONING CONDENSING UNIT



ALL PLANS ARE SUBJECT TO CHANGES BY THE RELEVANT AUTHORITIES.  
MEASUREMENTS ARE APPROXIMATE ONLY AND SUBJECT TO FINAL SURVEY.  
INFORMATION ACCURATE AT POINT OF PRINTING.  
BP NO.: A1716-00045-2025-8P01 DATED 09-FEB-2026



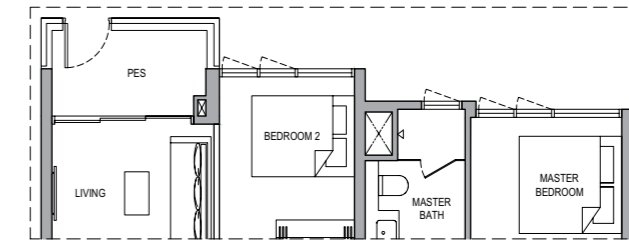
# 3-BEDROOM

## TYPE 3BR (B) PES

83 SQM / 893 SQFT  
(INCLUSIVE OF 6 SQM PES)

BLOCK 3

#01-18

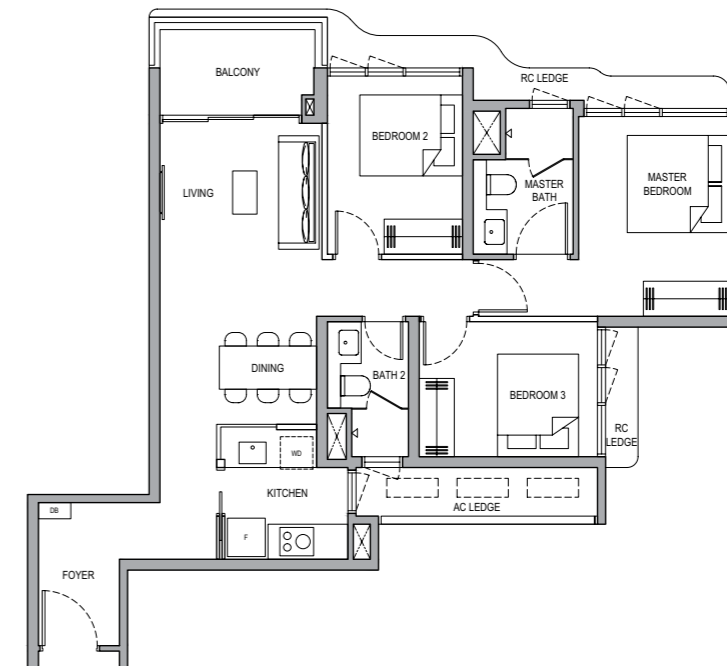


## TYPE 3BR (B)

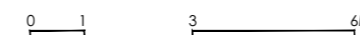
83 SQM / 893 SQFT  
(INCLUSIVE OF 6 SQM BALCONY)

BLOCK 3

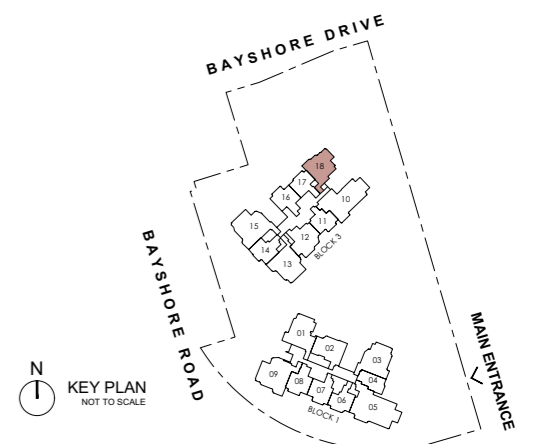
#02-18 to #30-18



- LEGEND:
- F FRIDGE
  - WD WASHER CUM DRYER
  - DB DISTRIBUTION BOARD
  - AC AIR-CONDITIONER (EXCLUDED FROM STRATA AREA)
  - RC REINFORCED CONCRETE (EXCLUDED FROM STRATA AREA)
  - ⊠ VOID SPACE (EXCLUDED FROM STRATA AREA)
  - ⊠ RAINWATER DOWNPIPE FOR BALCONY (EXCLUDED FROM STRATA AREA)
  - ⊠ WALLS NOT ALLOWED TO BE HACKED / ALTERED / DRILLED
  - ⊠ AIR CONDITIONING CONDENSING UNIT



ALL PLANS ARE SUBJECT TO CHANGES BY THE RELEVANT AUTHORITIES.  
MEASUREMENTS ARE APPROXIMATE ONLY AND SUBJECT TO FINAL SURVEY.  
INFORMATION ACCURATE AT POINT OF PRINTING.  
BP NO.: A1716-00045-2025-8P01 DATED 09-FEB-2026

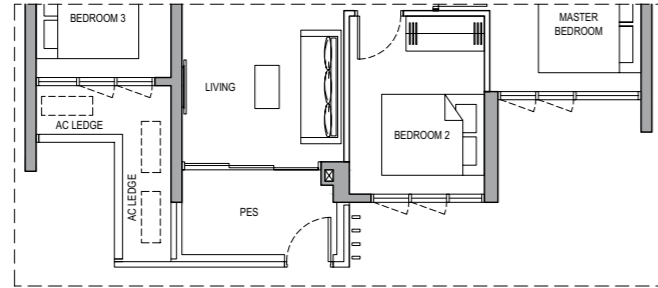


# 3-BEDROOM

## TYPE 3BR (C) PES

82 SQM / 883 SQFT  
(INCLUSIVE OF 6 SQM PES)

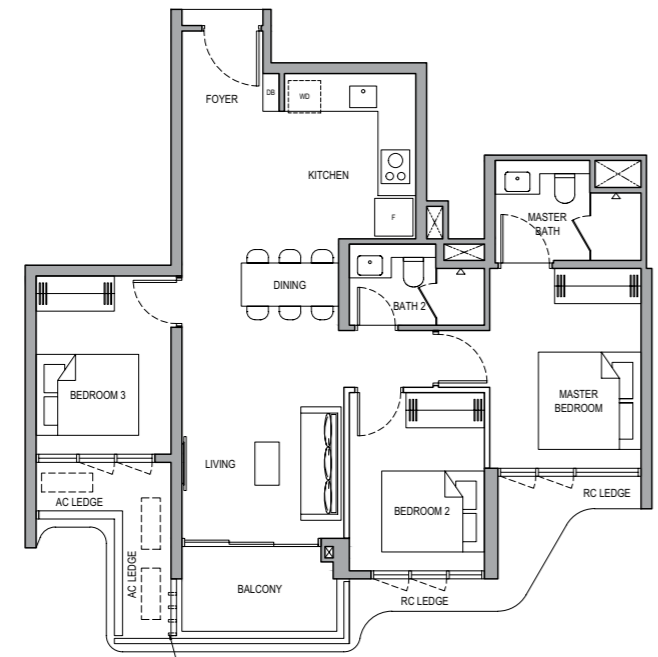
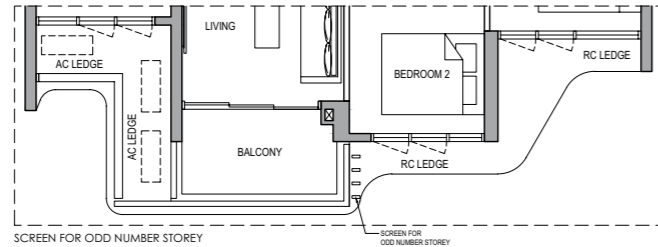
BLOCK 3  
#01-12



## TYPE 3BR (C)

82 SQM / 883 SQFT  
(INCLUSIVE OF 6 SQM BALCONY)

BLOCK 3  
#02-12 to #31-12

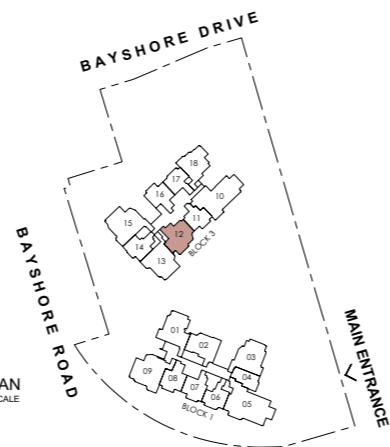


- LEGEND:
- F FRIDGE
  - W/D WASHER CUM DRYER
  - DB DISTRIBUTION BOARD
  - AC AIR-CONDITIONER (EXCLUDED FROM STRATA AREA)
  - RC REINFORCED CONCRETE (EXCLUDED FROM STRATA AREA)
  - VOID SPACE (EXCLUDED FROM STRATA AREA)
  - RAINWATER DOWNPIPE FOR BALCONY (EXCLUDED FROM STRATA AREA)
  - WALLS NOT ALLOWED TO BE HACKED / ALTERED / DRILLED
  - AIR CONDITIONING CONDENSING UNIT

0 1 3 6M

ALL PLANS ARE SUBJECT TO CHANGES BY THE RELEVANT AUTHORITIES.  
MEASUREMENTS ARE APPROXIMATE ONLY AND SUBJECT TO FINAL SURVEY.  
INFORMATION ACCURATE AT POINT OF PRINTING.  
BP NO.: A1716-00045-2025-8P01 DATED 09-FEB-2026

N  
KEY PLAN  
NOT TO SCALE

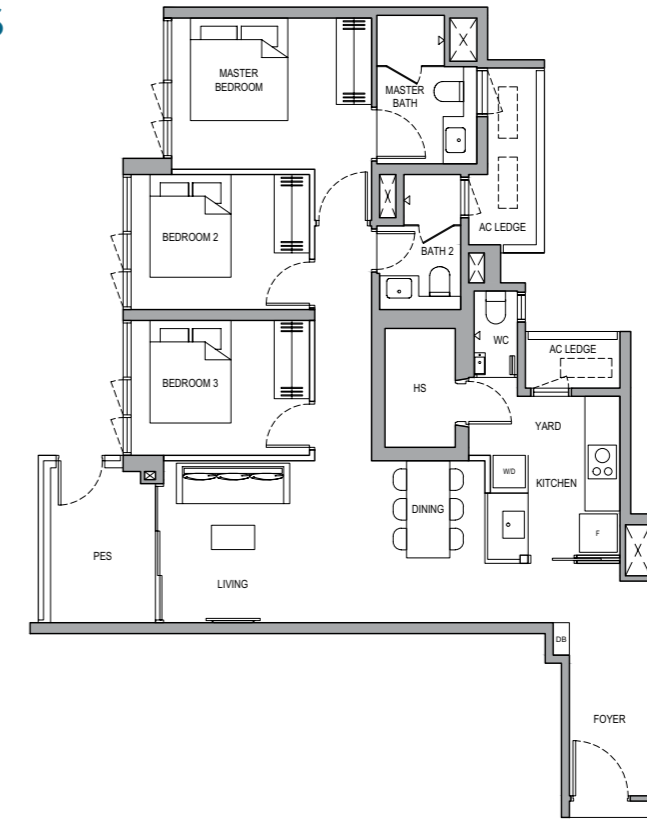


# 3-BEDROOM PREMIUM

## TYPE 3BR P (A) PES

96 SQM / 1,033 SQFT  
(INCLUSIVE OF 7 SQM PES)

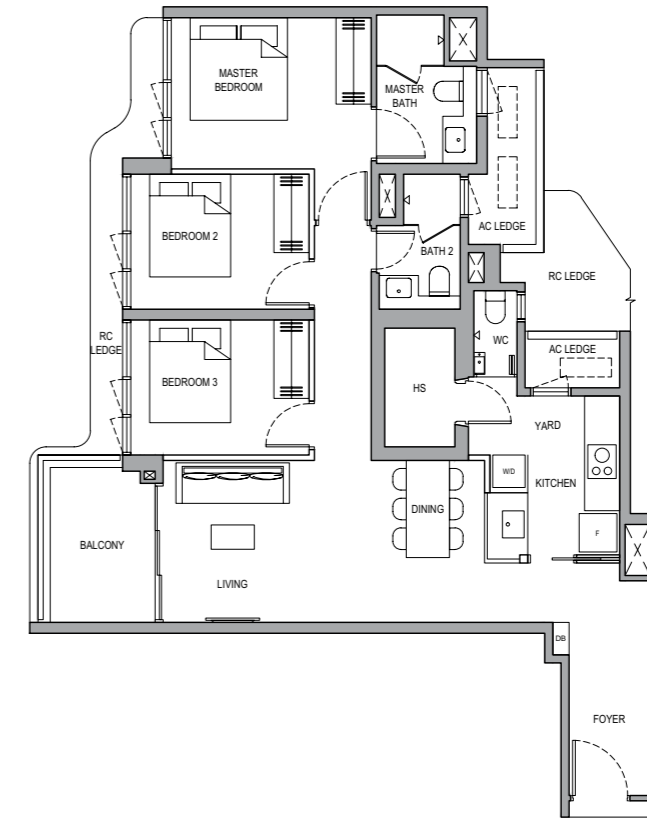
BLOCK 1  
#01-01



## TYPE 3BR P (A)

96 SQM / 1,033 SQFT  
(INCLUSIVE OF 7 SQM BALCONY)

BLOCK 1  
#02-01 to #30-01

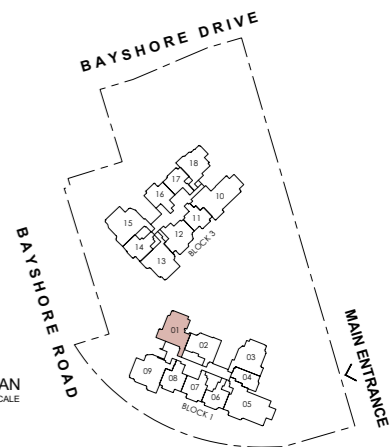


- LEGEND:
- F FRIDGE
  - W/D WASHER AND DRYER
  - DB DISTRIBUTION BOARD
  - WC WATER CLOSET
  - HS HOUSEHOLD SHELTER
  - AC AIR-CONDITIONER (EXCLUDED FROM STRATA AREA)
  - RC REINFORCED CONCRETE (EXCLUDED FROM STRATA AREA)
  - VOID SPACE (EXCLUDED FROM STRATA AREA)
  - RAINWATER DOWNPIPE FOR BALCONY (EXCLUDED FROM STRATA AREA)
  - WALLS NOT ALLOWED TO BE HACKED / ALTERED / DRILLED
  - AIR CONDITIONING CONDENSING UNIT

0 1 3 6M

ALL PLANS ARE SUBJECT TO CHANGES BY THE RELEVANT AUTHORITIES.  
MEASUREMENTS ARE APPROXIMATE ONLY AND SUBJECT TO FINAL SURVEY.  
INFORMATION ACCURATE AT POINT OF PRINTING.  
BP NO.: A1716-00045-2025-8P01 DATED 09-FEB-2026

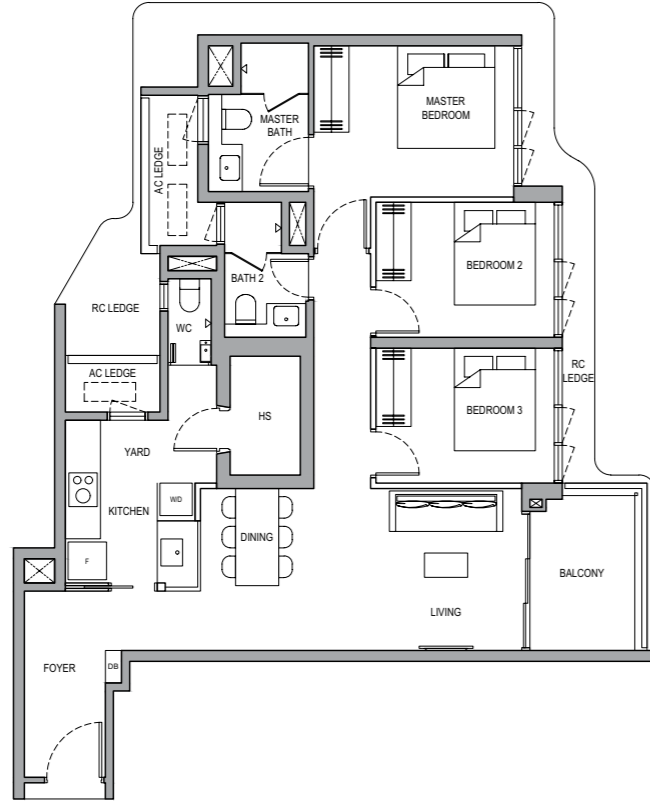
N  
KEY PLAN  
NOT TO SCALE



# 3-BEDROOM PREMIUM

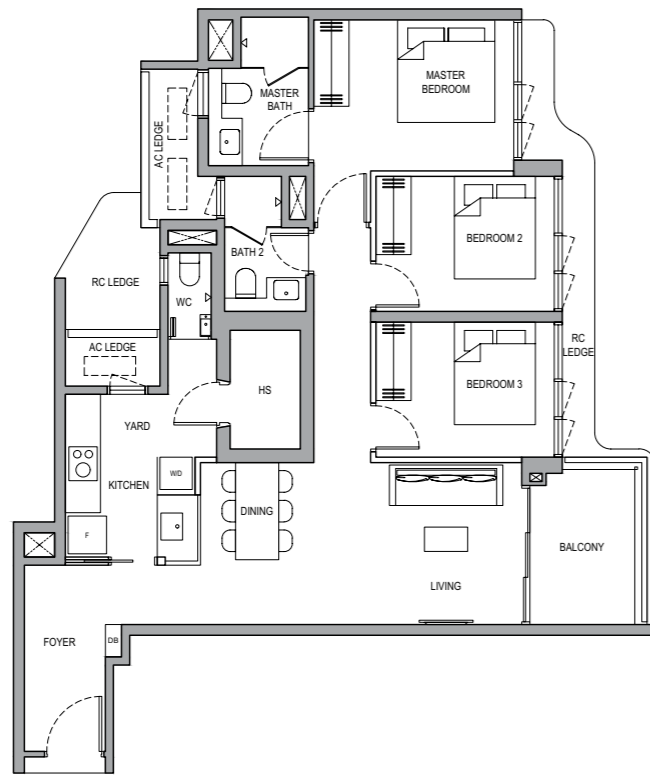
**TYPE 3BR P (B)**  
96 SQM / 1,033 SQFT  
(INCLUSIVE OF 7 SQM BALCONY)

**BLOCK 1**  
#05-03

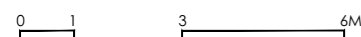


**TYPE 3BR P (B)**  
96 SQM / 1,033 SQFT  
(INCLUSIVE OF 7 SQM BALCONY)

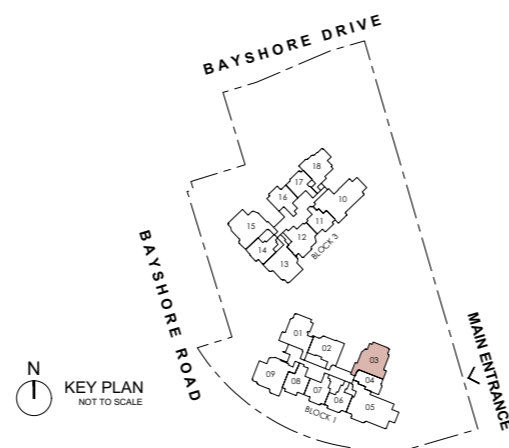
**BLOCK 1**  
#06-03 to #31-03



- LEGEND:**
- F FRIDGE
  - W/D WASHER AND DRYER
  - DB DISTRIBUTION BOARD
  - WC WATER CLOSET
  - HS HOUSEHOLD SHELTER
  - AC AIR-CONDITIONER (EXCLUDED FROM STRATA AREA)
  - RC REINFORCED CONCRETE (EXCLUDED FROM STRATA AREA)
  - ⊠ VOID SPACE (EXCLUDED FROM STRATA AREA)
  - ⊠ RAINWATER DOWNPIPE FOR BALCONY (EXCLUDED FROM STRATA AREA)
  - ⊠ WALLS NOT ALLOWED TO BE HACKED / ALTERED / DRILLED
  - ⊠ AIR CONDITIONING CONDENSING UNIT



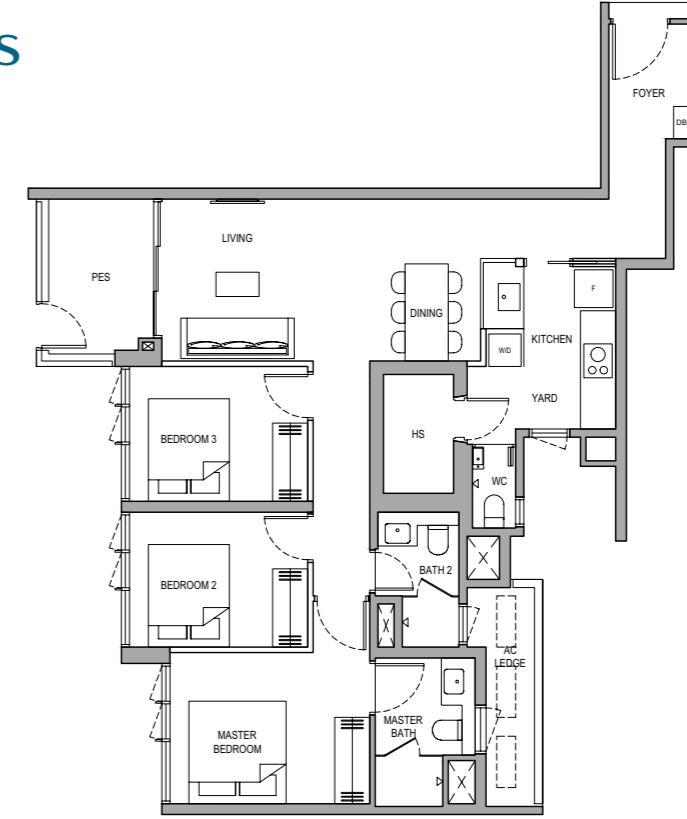
ALL PLANS ARE SUBJECT TO CHANGES BY THE RELEVANT AUTHORITIES.  
MEASUREMENTS ARE APPROXIMATE ONLY AND SUBJECT TO FINAL SURVEY.  
INFORMATION ACCURATE AT POINT OF PRINTING.  
BP NO.: A1716-00045-2025-8P01 DATED 09-FEB-2026



# 3-BEDROOM PREMIUM

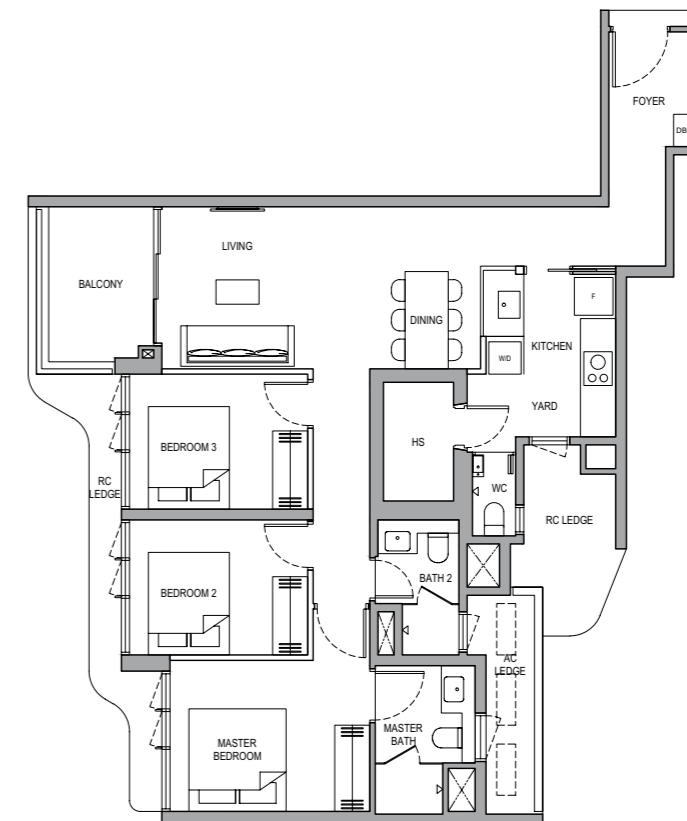
**TYPE 3BR P (C) PES**  
96 SQM / 1,033 SQFT  
(INCLUSIVE OF 7 SQM PES)

**BLOCK 3**  
#01-13

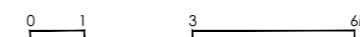


**TYPE 3BR P (C)**  
96 SQM / 1,033 SQFT  
(INCLUSIVE OF 7 SQM BALCONY)

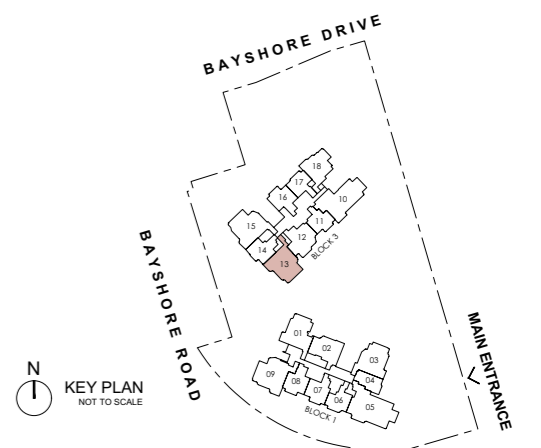
**BLOCK 3**  
#02-13 to #31-13



- LEGEND:**
- F FRIDGE
  - W/D WASHER AND DRYER
  - DB DISTRIBUTION BOARD
  - WC WATER CLOSET
  - HS HOUSEHOLD SHELTER
  - AC AIR-CONDITIONER (EXCLUDED FROM STRATA AREA)
  - RC REINFORCED CONCRETE (EXCLUDED FROM STRATA AREA)
  - ⊠ VOID SPACE (EXCLUDED FROM STRATA AREA)
  - ⊠ RAINWATER DOWNPIPE FOR BALCONY (EXCLUDED FROM STRATA AREA)
  - ⊠ WALLS NOT ALLOWED TO BE HACKED / ALTERED / DRILLED
  - ⊠ AIR CONDITIONING CONDENSING UNIT



ALL PLANS ARE SUBJECT TO CHANGES BY THE RELEVANT AUTHORITIES.  
MEASUREMENTS ARE APPROXIMATE ONLY AND SUBJECT TO FINAL SURVEY.  
INFORMATION ACCURATE AT POINT OF PRINTING.  
BP NO.: A1716-00045-2025-8P01 DATED 09-FEB-2026

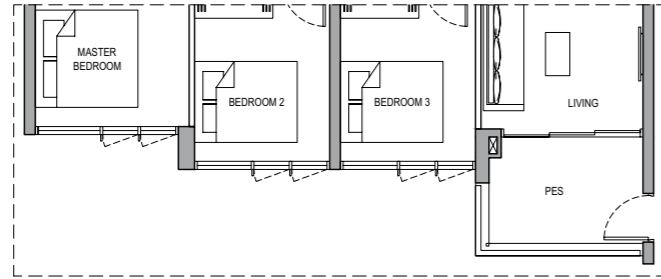


# 4-BEDROOM

## TYPE 4BR (A) PES

109 SQM / 1,173 SQFT  
(INCLUSIVE OF 7 SQM PES)

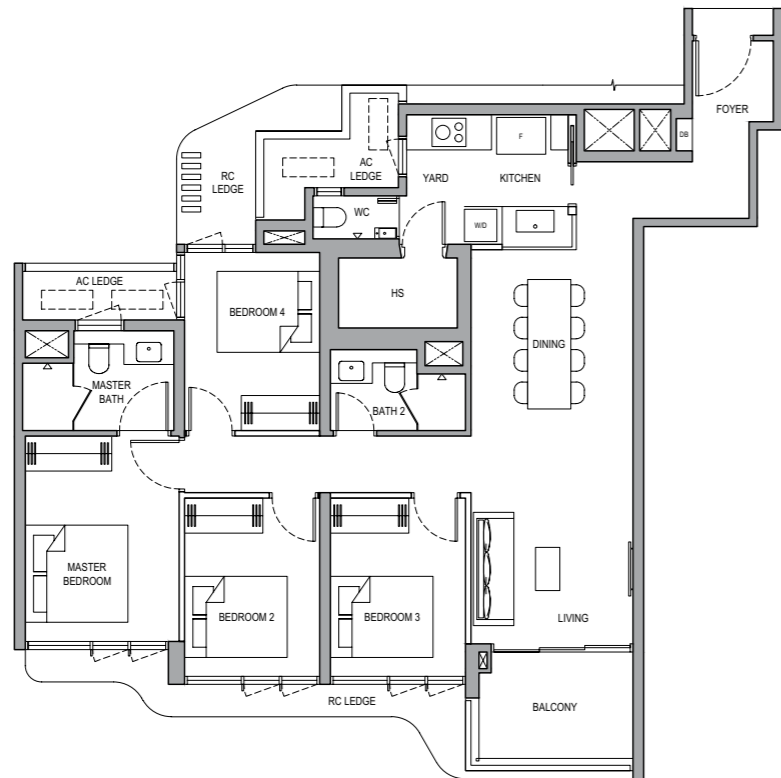
BLOCK 1  
#01-09



## TYPE 4BR (A)

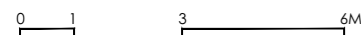
109 SQM / 1,173 SQFT  
(INCLUSIVE OF 7 SQM BALCONY)

BLOCK 1  
#02-09 to #31-09

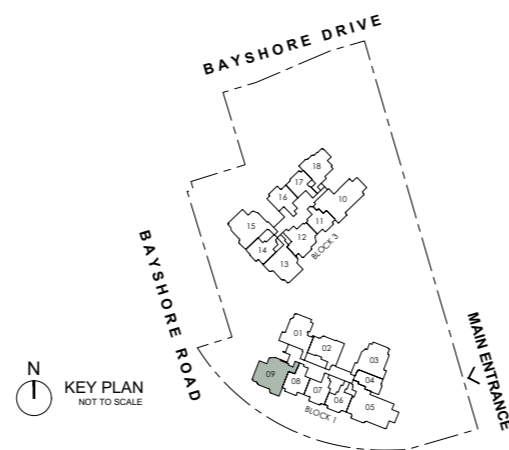


LEGEND:

- F FRIDGE
- W/D WASHER AND DRYER
- DB DISTRIBUTION BOARD
- WC WATER CLOSET
- HS HOUSEHOLD SHELTER
- AC AIR-CONDITIONER (EXCLUDED FROM STRATA AREA)
- RC REINFORCED CONCRETE (EXCLUDED FROM STRATA AREA)
- ∅ VOID SPACE (EXCLUDED FROM STRATA AREA)
- ⊗ RAINWATER DOWNPIPE FOR BALCONY (EXCLUDED FROM STRATA AREA)
- ▒ WALLS NOT ALLOWED TO BE HACKED / ALTERED / DRILLED
- - - AIR CONDITIONING CONDENSING UNIT



ALL PLANS ARE SUBJECT TO CHANGES BY THE RELEVANT AUTHORITIES.  
MEASUREMENTS ARE APPROXIMATE ONLY AND SUBJECT TO FINAL SURVEY.  
INFORMATION ACCURATE AT POINT OF PRINTING.  
BP NO.: A1716-00045-2025-8P01 DATED 09-FEB-2026

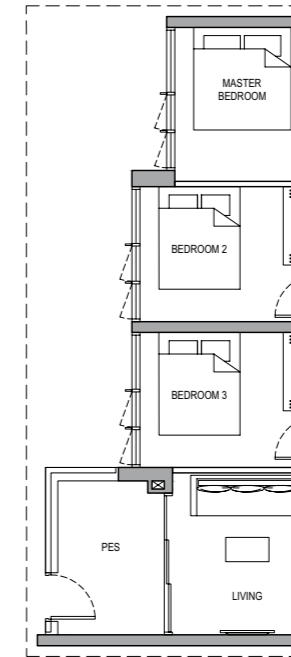


# 4-BEDROOM

## TYPE 4BR (B) PES

109 SQM / 1,173 SQFT  
(INCLUSIVE OF 7 SQM PES)

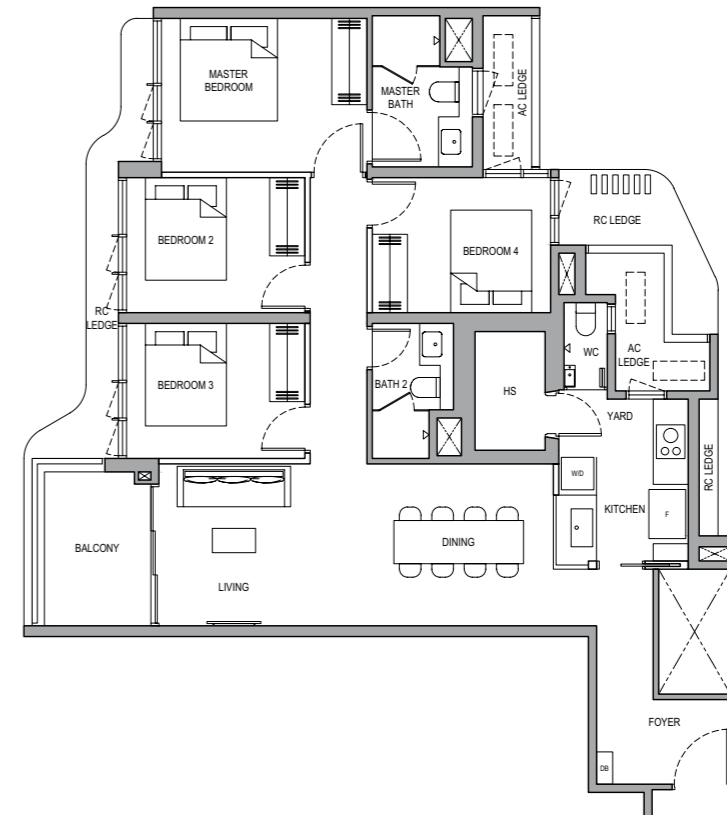
BLOCK 3  
#01-15



## TYPE 4BR (B)

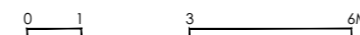
109 SQM / 1,173 SQFT  
(INCLUSIVE OF 7 SQM BALCONY)

BLOCK 3  
#02-15 to #31-15

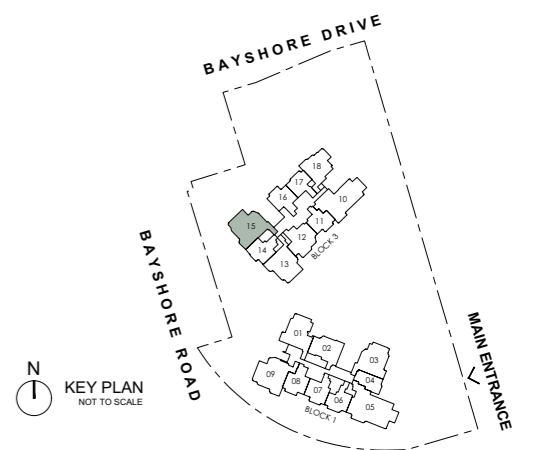


LEGEND:

- F FRIDGE
- W/D WASHER AND DRYER
- DB DISTRIBUTION BOARD
- WC WATER CLOSET
- HS HOUSEHOLD SHELTER
- AC AIR-CONDITIONER (EXCLUDED FROM STRATA AREA)
- RC REINFORCED CONCRETE (EXCLUDED FROM STRATA AREA)
- ∅ VOID SPACE (EXCLUDED FROM STRATA AREA)
- ⊗ RAINWATER DOWNPIPE FOR BALCONY (EXCLUDED FROM STRATA AREA)
- ▒ WALLS NOT ALLOWED TO BE HACKED / ALTERED / DRILLED
- - - AIR CONDITIONING CONDENSING UNIT



ALL PLANS ARE SUBJECT TO CHANGES BY THE RELEVANT AUTHORITIES.  
MEASUREMENTS ARE APPROXIMATE ONLY AND SUBJECT TO FINAL SURVEY.  
INFORMATION ACCURATE AT POINT OF PRINTING.  
BP NO.: A1716-00045-2025-8P01 DATED 09-FEB-2026

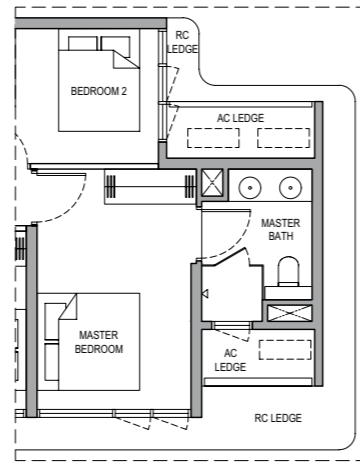


# 4-BEDROOM (PRIVATE LIFT)

## TYPE 4BR PL

128 SQM / 1,378 SQFT  
(INCLUSIVE OF 8 SQM BALCONY,  
4 SQM PRIVATE LIFT LOBBY)

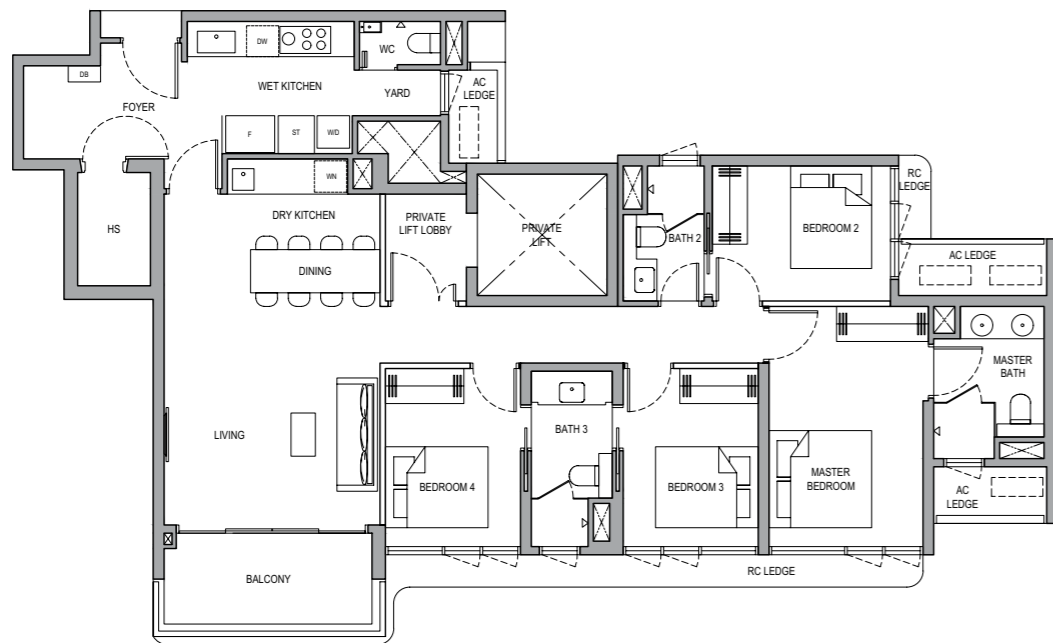
BLOCK 3  
#05-10



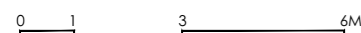
## TYPE 4BR PL

128 SQM / 1,378 SQFT  
(INCLUSIVE OF 8 SQM BALCONY,  
4 SQM PRIVATE LIFT LOBBY)

BLOCK 3  
#06-10 to #30-10



- LEGEND:
- F FRIDGE
  - W/D WASHER AND DRYER
  - DB DISTRIBUTION BOARD
  - ST STORE
  - WC WATER CLOSET
  - HS HOUSEHOLD SHELTER
  - WN WINE CHILLER
  - DW DISHWASHER
  - AC AIR-CONDITIONER (EXCLUDED FROM STRATA AREA)
  - RC REINFORCED CONCRETE (EXCLUDED FROM STRATA AREA)
  - ◻ VOID SPACE (EXCLUDED FROM STRATA AREA)
  - ◻ RAINWATER DOWNPIPE FOR BALCONY (EXCLUDED FROM STRATA AREA)
  - ◻ WALLS NOT ALLOWED TO BE HACKED / ALTERED / DRILLED
  - ◻ AIR CONDITIONING CONDENSING UNIT



ALL PLANS ARE SUBJECT TO CHANGES BY THE RELEVANT AUTHORITIES.  
MEASUREMENTS ARE APPROXIMATE ONLY AND SUBJECT TO FINAL SURVEY.  
INFORMATION ACCURATE AT POINT OF PRINTING.  
BP NO.: A1716-00045-2025-8P01 DATED 09-FEB-2026

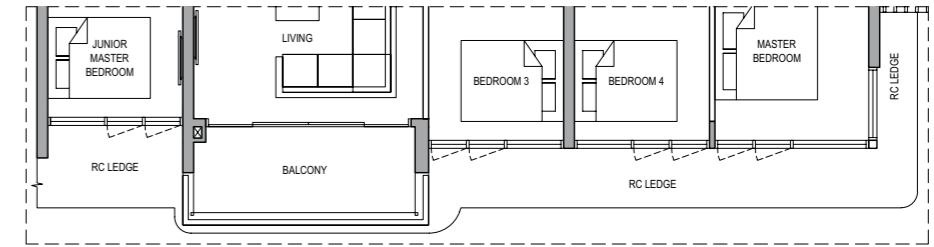


# 5-BEDROOM (PRIVATE LIFT)

## TYPE 5BR PL

147 SQM / 1,582 SQFT  
(INCLUSIVE OF 8 SQM BALCONY,  
4 SQM PRIVATE LIFT LOBBY)

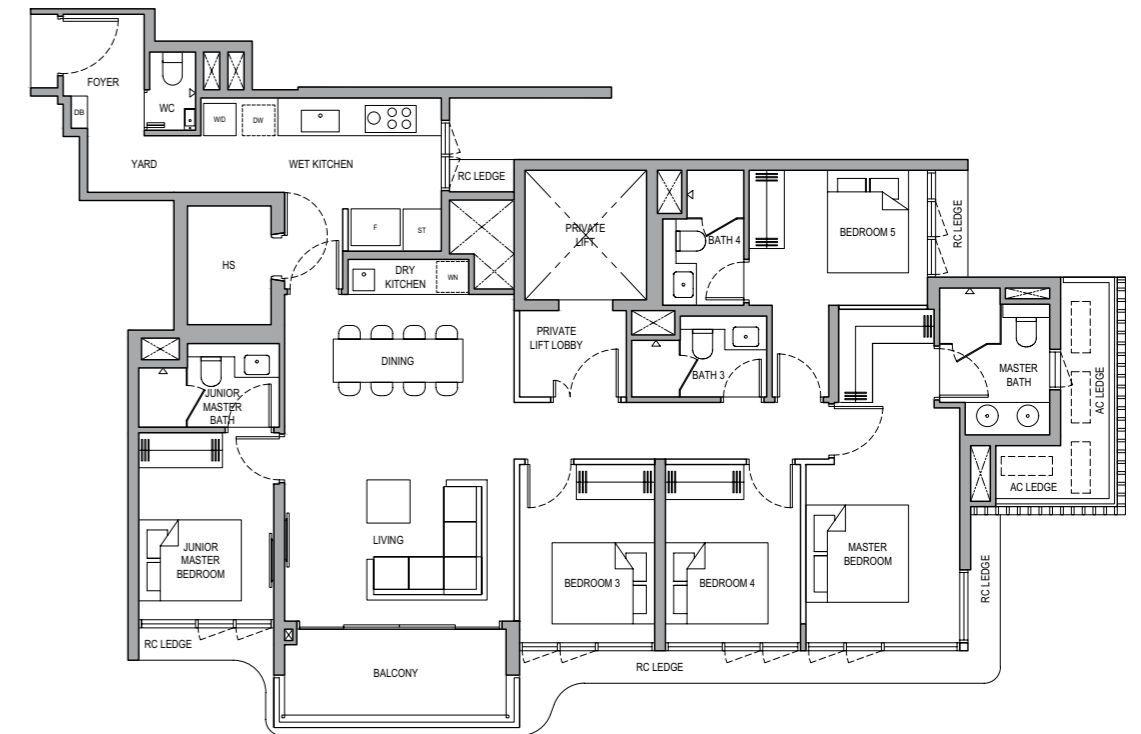
BLOCK 1  
#05-05



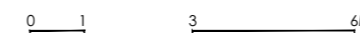
## TYPE 5BR PL

147 SQM / 1,582 SQFT  
(INCLUSIVE OF 8 SQM BALCONY,  
4 SQM PRIVATE LIFT LOBBY)

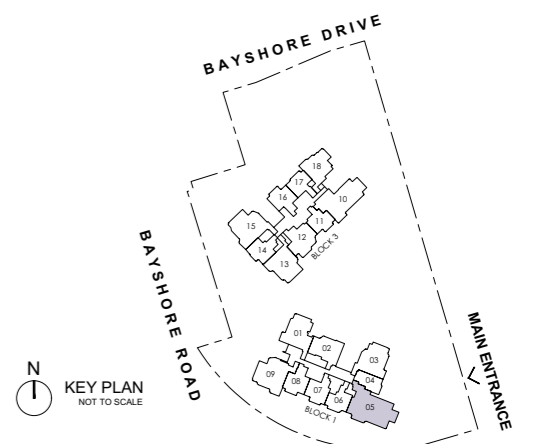
BLOCK 1  
#06-05 to #30-05



- LEGEND:
- F FRIDGE
  - W/D WASHER AND DRYER
  - DB DISTRIBUTION BOARD
  - ST STORE
  - WC WATER CLOSET
  - HS HOUSEHOLD SHELTER
  - WN WINE CHILLER
  - DW DISHWASHER
  - AC AIR-CONDITIONER (EXCLUDED FROM STRATA AREA)
  - RC REINFORCED CONCRETE (EXCLUDED FROM STRATA AREA)
  - ◻ VOID SPACE (EXCLUDED FROM STRATA AREA)
  - ◻ RAINWATER DOWNPIPE FOR BALCONY (EXCLUDED FROM STRATA AREA)
  - ◻ WALLS NOT ALLOWED TO BE HACKED / ALTERED / DRILLED
  - ◻ AIR CONDITIONING CONDENSING UNIT



ALL PLANS ARE SUBJECT TO CHANGES BY THE RELEVANT AUTHORITIES.  
MEASUREMENTS ARE APPROXIMATE ONLY AND SUBJECT TO FINAL SURVEY.  
INFORMATION ACCURATE AT POINT OF PRINTING.  
BP NO.: A1716-00045-2025-8P01 DATED 09-FEB-2026

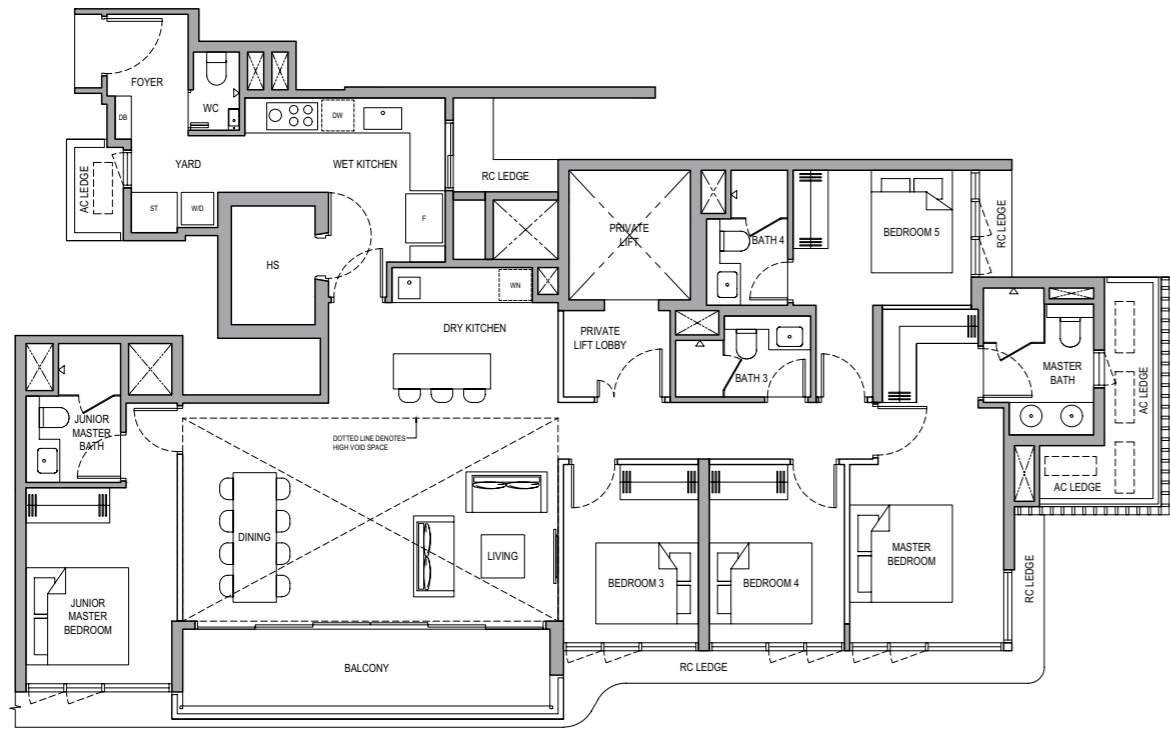


# PENTHOUSE 1

## TYPE PH1

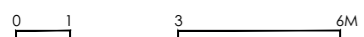
164 SQM / 1,765 SQFT  
(INCLUSIVE OF 12 SQM BALCONY,  
4 SQM PRIVATE LIFT LOBBY)

BLOCK 1  
#31-05

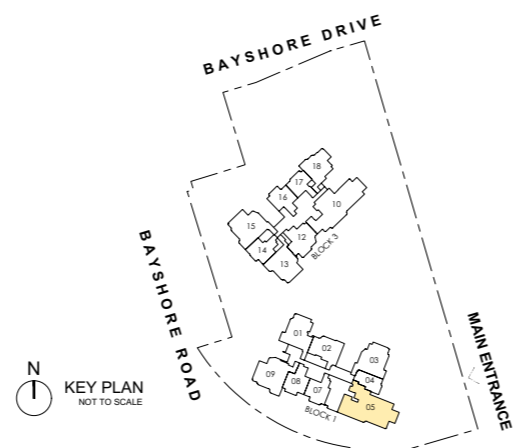


LEGEND:

- F FRIDGE
- W/D WASHER AND DRYER
- DB DISTRIBUTION BOARD
- ST STORE
- WC WATER CLOSET
- HS HOUSEHOLD SHELTER
- WN WINE CHILLER
- DW DISHWASHER
- AC AIR-CONDITIONER (EXCLUDED FROM STRATA AREA)
- RC REINFORCED CONCRETE (EXCLUDED FROM STRATA AREA)
- ⊠ VOID SPACE (EXCLUDED FROM STRATA AREA)
- ⊡ HIGH VOID SPACE (EXCLUDED FROM STRATA AREA)
- ▨ WALLS NOT ALLOWED TO BE HACKED / ALTERED / DRILLED
- ⊞ AIR CONDITIONING CONDENSING UNIT



ALL PLANS ARE SUBJECT TO CHANGES BY THE RELEVANT AUTHORITIES.  
MEASUREMENTS ARE APPROXIMATE ONLY AND SUBJECT TO FINAL SURVEY.  
INFORMATION ACCURATE AT POINT OF PRINTING.  
BP NO.: A1716-00045-2025-8P01 DATED 09-FEB-2026

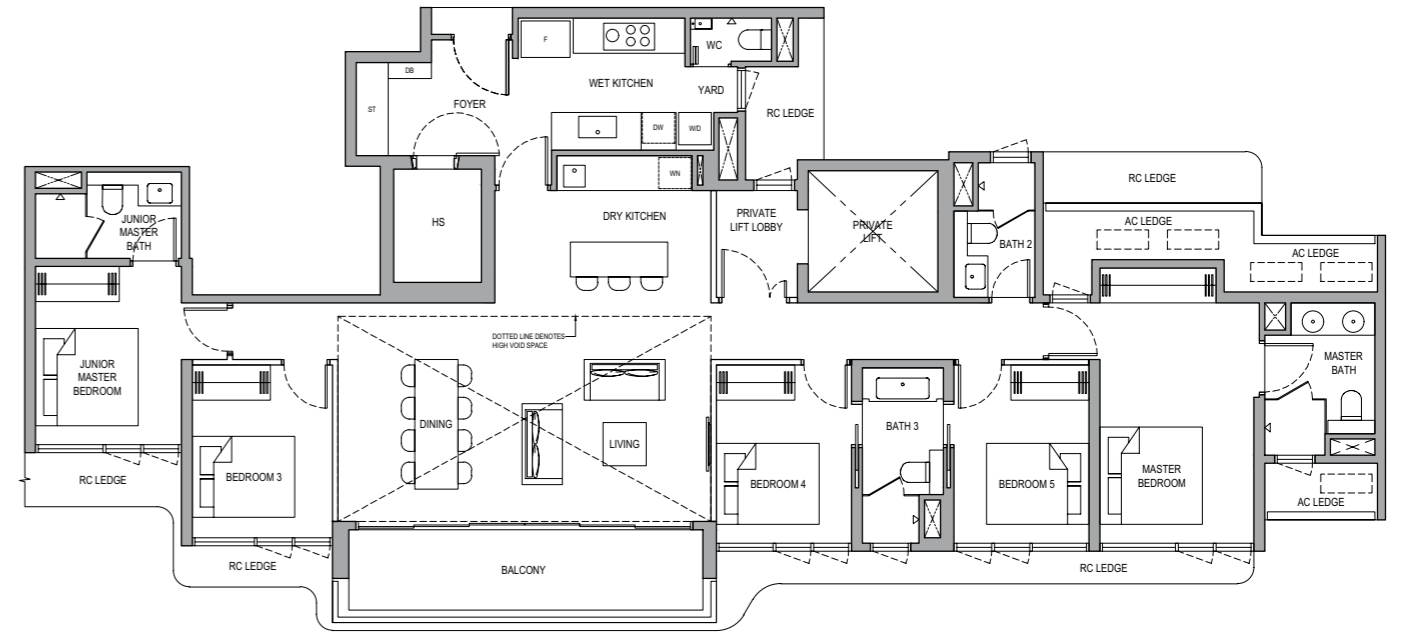


# PENTHOUSE 2

## TYPE PH2

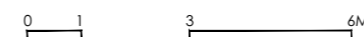
164 SQM / 1,765 SQFT  
(INCLUSIVE OF 12 SQM BALCONY,  
4 SQM PRIVATE LIFT LOBBY)

BLOCK 3  
#31-10

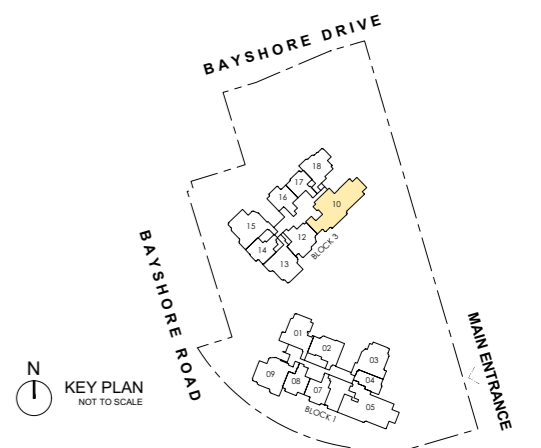


LEGEND:

- F FRIDGE
- W/D WASHER AND DRYER
- DB DISTRIBUTION BOARD
- ST STORE
- WC WATER CLOSET
- HS HOUSEHOLD SHELTER
- WN WINE CHILLER
- DW DISHWASHER
- AC AIR-CONDITIONER (EXCLUDED FROM STRATA AREA)
- RC REINFORCED CONCRETE (EXCLUDED FROM STRATA AREA)
- ⊠ VOID SPACE (EXCLUDED FROM STRATA AREA)
- ⊡ HIGH VOID SPACE (EXCLUDED FROM STRATA AREA)
- ▨ WALLS NOT ALLOWED TO BE HACKED / ALTERED / DRILLED
- ⊞ AIR CONDITIONING CONDENSING UNIT



ALL PLANS ARE SUBJECT TO CHANGES BY THE RELEVANT AUTHORITIES.  
MEASUREMENTS ARE APPROXIMATE ONLY AND SUBJECT TO FINAL SURVEY.  
INFORMATION ACCURATE AT POINT OF PRINTING.  
BP NO.: A1716-00045-2025-8P01 DATED 09-FEB-2026





# SHAPING A NEW CHAPTER OF COASTAL LIVING.

At SingHaiyi, we create highly liveable, enduring communities through our strict focus on quality construction, thoughtful design, and strong investment potential.

We are backed by a diversified portfolio spanning commercial and hospitality assets, anchoring us to a stable foundation and enabling us to deliver with confidence across market cycles.

Guided by our philosophy of “精誠存信 佳業傳承,” which reflects our commitment to acting with sincerity and upholding trust, we strive to build a legacy of excellence that endures across generations. We build homes you can trust and shape communities designed to stand the test of time.

As Singapore’s East Coast continues to evolve, we are committed to realising the Bayshore vision of bringing you the very best in connectivity, lifestyle, and quality living.



GRAND DUNMAN



PARC CLEMATIS



PARC KOMU



SORA



TMW MAXWELL



THE COLLECTIVE AT ONE SOPHIA



9 PENANG ROAD



SINGHAIYI GROUP PTE LTD  
Recognised by BCA for consistent construction quality of private residential projects over the past six years

CONQUAS BANDING (BAND 1)



THE GAZANIA • THE LILIUM •  
9 PENANG ROAD • THE VALES

CONSTRUCTION QUALITY  
ASSESSMENT SYSTEM



SINGAPORE PRESTIGE  
BRAND AWARD 2020 / 2021

## EDGEPROP SINGAPORE EXCELLENCE AWARDS

**SINGHAIYI GROUP**

EdgeProp SINGAPORE EXCELLENCE AWARDS 2024

- Top Developer
- Top Selling Project in RCR
- Top Mega Development

**2024 GRAND DUNMAN**

EdgeProp SINGAPORE EXCELLENCE AWARDS 2024

- Landscape Excellence
- Design Excellence
- Marketing Excellence
- Showflat Excellence

**2024 TMW MAXWELL**

EdgeProp SINGAPORE EXCELLENCE AWARDS 2025

- Top Development

**2025 SORA**

EdgeProp SINGAPORE EXCELLENCE AWARDS 2025

- Showflat Excellence

**2025 ONE SOPHIA**

## ASIA PROPERTY AWARDS SINGAPORE

KOHLER presents PropertyGuru ASIA PROPERTY AWARDS SINGAPORE

**2018 THE VALES**

- WINNER: Best Executive Condo Interior Design (The Vales by Anchorvale Residences Pte Ltd)
- WINNER: Best Executive Condo Architectural Design (The Vales by Anchorvale Residences Pte Ltd)
- WINNER: Best Executive Condo Development (The Vales by Anchorvale Residences Pte Ltd)
- WINNER: Best Mega - Scale Condo Development (Parc Clematis by Sing-Haiyi Gold Pte Ltd)
- WINNER: Best Strata Housing Interior Design (Parc Clematis by Sing-Haiyi Gold Pte Ltd)
- WINNER: Best Universal Design Development (Parc Clematis by Sing-Haiyi Gold Pte Ltd)

PropertyGuru ASIA PROPERTY AWARDS SINGAPORE

**2019 PARC CLEMATIS**

**2023 GRAND DUNMAN**

- HIGHLY COMMENDED: Best Sales Gallery Architectural Design (Grand Dunman by Grand Dunman Pte. Ltd.)
- HIGHLY COMMENDED: Best Private Condo Development (Grand Dunman by Grand Dunman Pte. Ltd.)
- WINNER: Best Mega Scale Condo Landscape Design (Grand Dunman by Grand Dunman Pte. Ltd.)
- WINNER: Best Mega Scale Condo Architectural Design (Grand Dunman by Grand Dunman Pte. Ltd.)
- WINNER: Best Mega Scale Condo Development (Grand Dunman by Grand Dunman Pte. Ltd.)

## BCA GREEN MARK AWARD

BCA GREEN MARK

VELA BAY Green Mark Platinum Super Low Energy (SLE)

GRAND DUNMAN Green Mark Platinum Super Low Energy (SLE)

THE LILIUM Green Mark Gold Plus

THE GAZANIA Green Mark Gold Plus

PARC CLEMATIS Green Mark Gold Plus

Developer: Bayshore Walk Pte. Ltd. (UEN: 202517243M). Housing Developer's License No.: C1542. Tenure of Land: Leasehold estate of 99 years commencing on 25 June 2025. Expected Date of Vacant Possession: 31 December 2031. Expected Date of Legal Completion: 31 December 2034. Lot & Mukim No.: Lot 11342L of MK 27 at Bayshore Walk. Encumbrances: Caveat IK/129630R and Mortgage IK/86592T (in escrow) in favour of United Overseas Bank Limited.

While every reasonable care has been taken in preparing this brochure and in constructing the models, show flats and sales gallery, neither the Developer nor its agents will be held responsible for any inaccuracies or omissions. Visual representations, models, show flat displays and illustrations, photographs, art renderings and other graphic representations and references are artist's impressions and/or decor suggestions only and cannot be regarded as representations of fact. All areas and other measurements are approximate only and subject to final survey. All plans and models are not to scale unless expressly stated and are subject to any amendments which are required or approved by the relevant authorities. All statements are believed to be correct but are not to be regarded as statements or representation of facts. All information and specifications are current at the time of going to press and are subject to such changes as may be required by the Developer and/or the relevant authorities. The Sale and Purchase Agreement embodies all the terms and conditions between the Developer and the purchaser and supersedes and cancels in all respects all previous representations, warranties, promises, inducements or statements of intention, whether written or oral made by the Developer and/or the Developer's agent which are not embodied in the Sale and Purchase Agreement.