

Meet the best neighbours

CONNECTIVITY
 Tampines West MRT Station Underground pedestrian link access
 Pan Island Expressway (PIE) 3-min drive
 Tampines Expressway (TPE) 9-min drive

SCHOOLS
 Singapore University of Technology and Design 3 MRT stops
 St. Hilda's Primary School (<1km) 10-min walk
 Temasek Polytechnic 10-min walk
 Red Swastika School (<2km) 18-min walk

LIFESTYLE & DINING
 Pinery Mall Direct access
 Tampines Mall, Tampines One, Century Square 1 MRT stop
 Jewel Changi Airport 5 MRT stops
 Tampines Round Market & Food Centre 3-min drive
 Eastpoint Mall 5-min drive
 Bedok 85 Market 5-min drive
 Bedok Mall 6-min drive
 Giant Hypermarket 10-min drive
 COURTS Megastore 10-min drive
 IKEA Tampines 10-min drive

HEALTHCARE
 Future Eastern General Hospital Campus 2 MRT stops
 Changi General Hospital 4-min drive
 St. Andrew's Community Hospital 4-min drive
 Tampines Polyclinic 4-min drive
 Bedok Polyclinic 5-min drive

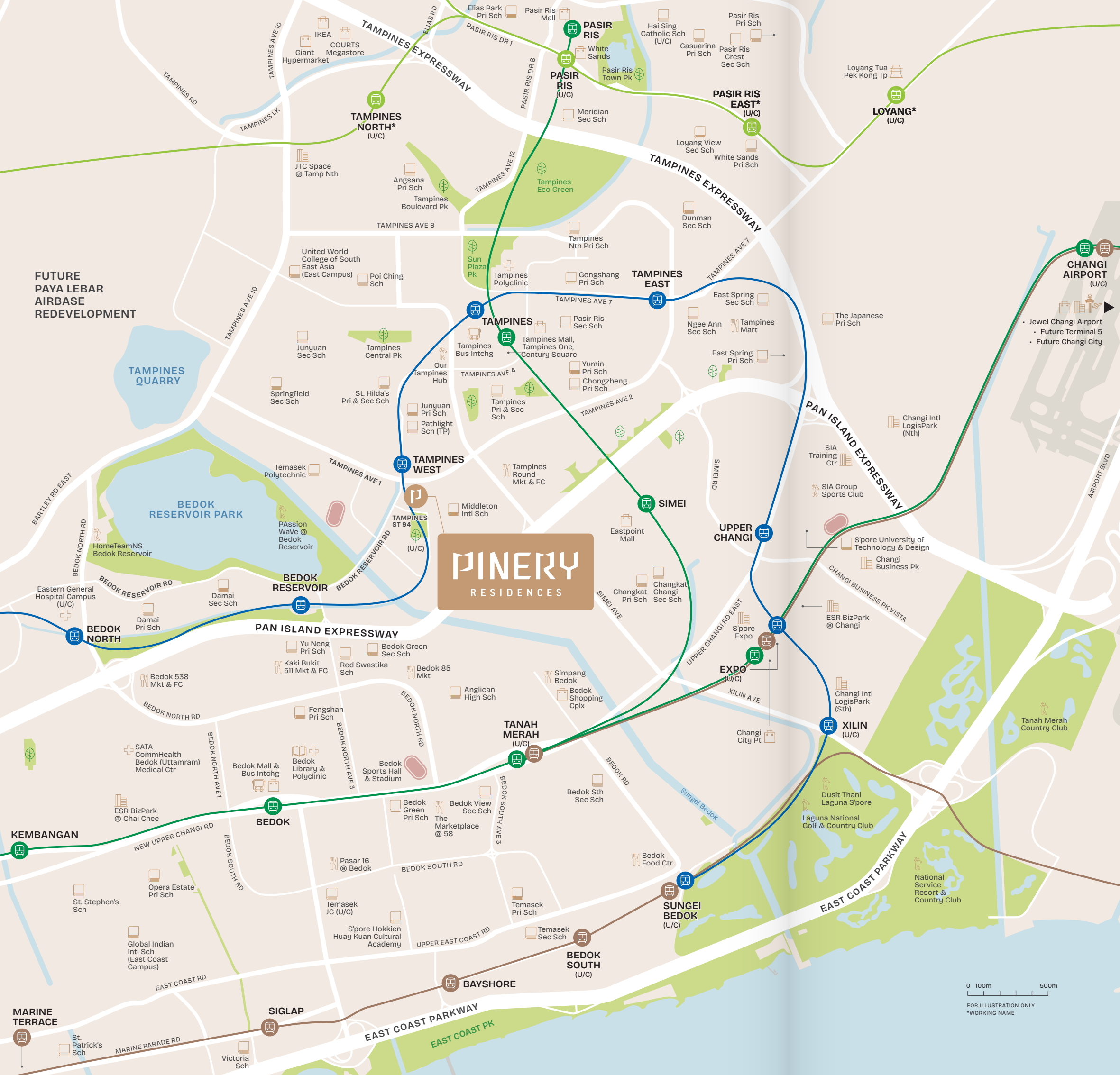
NATURE
 Bedok Reservoir Park 10-min walk
 Tampines Eco Green 6-min drive

RECREATION
 Our Tampines Hub 17-min walk
 Tanah Merah Country Club 10-min drive
 Laguna National Golf & Country Club 10-min drive
 National Service Resort & Country Club 16-min drive

BUSINESS
 Tampines Regional Centre 1 MRT stop
 Future Changi City 6 MRT stops
 Changi Business Park 9-min drive
 Future Paya Lebar Airbase Redevelopment 15-min drive

— East-West Line — Thomson-East Coast Line
— Downtown Line — Cross Island Line (U/C)

Actual travel time may vary due to traffic conditions. All information is correct at time of printing and is subject to change without prior notice.



0 100m 500m

FOR ILLUSTRATION ONLY
 *WORKING NAME

PINERY
 RESIDENCES

FUTURE
 PAYA LEBAR
 AIRBASE
 REDEVELOPMENT

MARINE
 TERRACE

UNDERGROUND PEDESTRIAN LINK TO TAMPINES WEST MRT STATION

TAMPINES AVENUE 1

BEDOK RESERVOIR ROAD

TAMPINES STREET 94



A home for every way you choose to live

The Family Oasis

- A1 The Pinery House
- A1a Function Room 1
- A1b Function Room 2
- A1c Media Lounge
- A1d Games Lounge
- A1e Reading Lounge
- A1f Private Dining Lounge
- A1g Changing Room
- A2 Family Pool
- A3 Jacuzzi Cove
- A4 Pool Deck
- A5 Cabana Garden
- A6 Outdoor Shower
- A7 Lantern Pavilion
- A8 Splash Play Pool
- A9 Kids' Pool
- A10 Kids' Party Room
- A11 BBQ Pavilion 1
- A12 Outdoor Fitness
- A13 Sensory Garden
- A14 Swing Garden
- A15 Monstera Garden
- A16 Reading Corner
- A17 Ginger Garden

The Play Cove

- B1 Multi-Purpose Court
- B2 Kids' Playground
- B3 Play Lawn
- B4 BBQ Pavilion 2
- B5 BBQ Pavilion 3
- B6 BBQ Pavilion 4
- B7 Discovery Garden
- B8 Herb Garden
- B9 Rest Deck Cove

The Vitality Sanctuary

- C1 Gymnasium
- C2 Spa Shower
- C3 Changing Room
- C4 50m Lap Pool
- C5 Pool Deck
- C6 Hydrotherapy Pool
- C7 Outdoor Shower
- C8 Tower Pavilion
- C9 Fragrant Garden
- C10 Tranquil Garden
- C11 Heliconia Gardens
- C12 Garden Walk
- C13 Yoga Corner
- C14 Alocasia Garden
- C15 Canna Garden
- C16 Pandanus Garden

The Arrival (2nd Storey)

- D1 Arrival Plaza Drop Off
- D2 Guard House
- D3 Management Office
- D4 Bicycle Parking

Others

- E1 Genset
- E2 Cooling Tower (2nd Storey) Commercial Strata
- E3 Electrical Substation (Basement 1)
- E4 Bin Center (Basement 1)
- Water Tank (Roof)



CG APPROVAL NO.: ES20250918-50009-CG01
 CG APPROVAL DATE: 23 JAN 2026
 FOR ILLUSTRATION ONLY

Unit Distribution Chart

Block 922 (479990)

UNIT/FLOOR	1	2	3	4	5	6	7
14	B1	E1	D2	B3	D1	D4	B1
13	B1	E1	D2	B3	D1	D4	B1
12	B1	E1	D2	B3	D1	D4	B1
11	B1	E1	D2	B3	D1	D4	B1
10	B1	E1	D2	B3	D1	D4	B1
9	B1	E1	D2	B3	D1	D4	B1
8	B1	E1	D2	B3	D1	D4	B1
7	B1	E1	D2	B3	D1	D4	B1
6	B1	E1	D2	B3	D1	D4	B1
5	B1	E1	D2	B3	D1	D4	B1
4	B1	E1	D2	B3	D1	D4	B1
3	B1-G	E1-G	D2-G	B3-G	D1-G	D4-G	B1-G

Block 924 (479991)

UNIT/FLOOR	8	9	10	11	12	13
14	D2	C2	B3	D1	C7	B3
13	D2	C2	B3	D1	C7	B3
12	D2	C2	B3	D1	C7	B3
11	D2	C2	B3	D1	C7	B3
10	D2	C2	B3	D1	C7	B3
9	D2	C2	B3	D1	C7	B3
8	D2	C2	B3	D1	C7	B3
7	D2	C2	B3	D1	C7	B3
6	D2	C2	B3	D1	C7	B3
5	D2	C2	B3	D1	C7	B3
4	D2	C2	B3	D1	C7	B3
3	D2-G	C2-G	B3-G	D1-G	C7-G	B3-G

Block 926 (479992)

UNIT/FLOOR	14	15	16	17	18	19	20	21	22
14	C1	D5	D2	B1	B1	C7	B2	D3	C1
13	C1	D5	D2	B1	B1	C7	B2	D3	C1
12	C1	D5	D2	B1	B1	C7	B2	D3	C1
11	C1	D5	D2	B1	B1	C7	B2	D3	C1
10	C1	D5	D2	B1	B1	C7	B2	D3	C1
9	C1	D5	D2	B1	B1	C7	B2	D3	C1
8	C1	D5	D2	B1	B1	C7	B2	D3	C1
7	C1	D5	D2	B1	B1	C7	B2	D3	C1
6	C1	D5	D2	B1	B1	C7	B2	D3	C1
5	C1	D5	D2	B1	B1	C7	B2	D3	C1
4	C1	D5	D2	B1	B1	C7	B2	D3	C1
3	C1-G	D5-G	D2-G	B1-G	B1-G	C7-G	B2-G	D3-G	C1-G

Block 928 (479993)

UNIT/FLOOR	23	24	25	26	27	28	29	30	31
14	C1	D4	C2	B1	B1	C7	B2	D3	C1
13	C1	D4	C2	B1	B1	C7	B2	D3	C1
12	C1	D4	C2	B1	B1	C7	B2	D3	C1
11	C1	D4	C2	B1	B1	C7	B2	D3	C1
10	C1	D4	C2	B1	B1	C7	B2	D3	C1
9	C1	D4	C2	B1	B1	C7	B2	D3	C1
8	C1	D4	C2	B1	B1	C7	B2	D3	C1
7	C1	D4	C2	B1	B1	C7	B2	D3	C1
6	C1	D4	C2	B1	B1	C7	B2	D3	C1
5	C1	D4	C2	B1	B1	C7	B2	D3	C1
4	C1	D4	C2	B1	B1	C7	B2	D3	C1
3	C1-G	D4-G	C2-G	B1-G	B1-G	C7-G	B2-G	D3-G	C1-G

Block 930 (479973)

UNIT/FLOOR	32	33	34	35	36	37	38	39	40
14	B4	B4	C6	C7	B1	B4	C4	C3	B1
13	B4	B4	C6	C7	B1	B4	C4	C3	B1
12	B4	B4	C6	C7	B1	B4	C4	C3	B1
11	B4	B4	C6	C7	B1	B4	C4	C3	B1
10	B4	B4	C6	C7	B1	B4	C4	C3	B1
9	B4	B4	C6	C7	B1	B4	C4	C3	B1
8	B4	B4	C6	C7	B1	B4	C4	C3	B1
7	B4	B4	C6	C7	B1	B4	C4	C3	B1
6	B4	B4	C6	C7	B1	B4	C4	C3	B1
5	B4	B4	C6	C7	B1	B4	C4	C3	B1
4	B4	B4	C6	C7	B1	B4	C4	C3	B1
3	B4-G	B4-G	C6-G	C7-G	B1-G	B4-G	C4-G	C3-G	B1-G

Block 932 (479972)

UNIT/FLOOR	41	42	43	44	45	46	47	48	49
14	B1	C5	C7	B1	B4	C4	C3	B4	B4
13	B1	C5	C7	B1	B4	C4	C3	B4	B4
12	B1	C5	C7	B1	B4	C4	C3	B4	B4
11	B1	C5	C7	B1	B4	C4	C3	B4	B4
10	B1	C5	C7	B1	B4	C4	C3	B4	B4
9	B1	C5	C7	B1	B4	C4	C3	B4	B4
8	B1	C5	C7	B1	B4	C4	C3	B4	B4
7	B1	C5	C7	B1	B4	C4	C3	B4	B4
6	B1	C5	C7	B1	B4	C4	C3	B4	B4
5	B1	C5	C7	B1	B4	C4	C3	B4	B4
4	B1	C5	C7	B1	B4	C4	C3	B4	B4
3	B1-G	C5-G	C7-G	B1-G	B4-G	C4-G	C3-G	B4-G	B4-G

- LEGEND**
- 2-Bedroom | B1, B2, B3
 - 2-Bedroom Premium + Study | B4
 - 3-Bedroom | C1
 - 3-Bedroom Deluxe | C2, C3
 - 3-Bedroom Premium | C4, C5, C6
 - 3-Bedroom Premium + Study | C7
 - 4-Bedroom | D1
 - 4-Bedroom Premium + Study | D2, D3, D4
 - 4-Bedroom Luxury + Study | D5
 - 5-Bedroom Luxury | E1





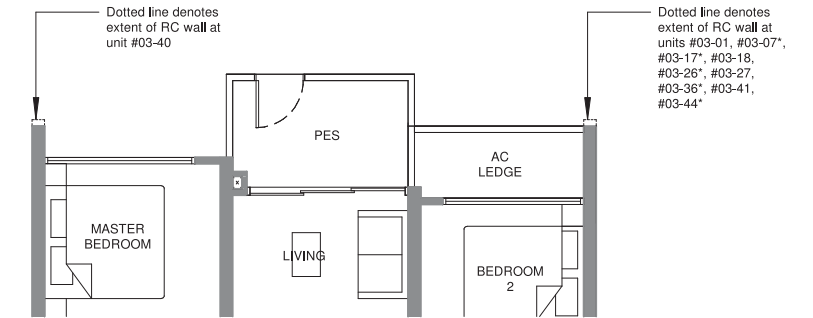
FOR ILLUSTRATION ONLY

2-Bedroom

TYPE B1-G

58 sqm / 624 sqft

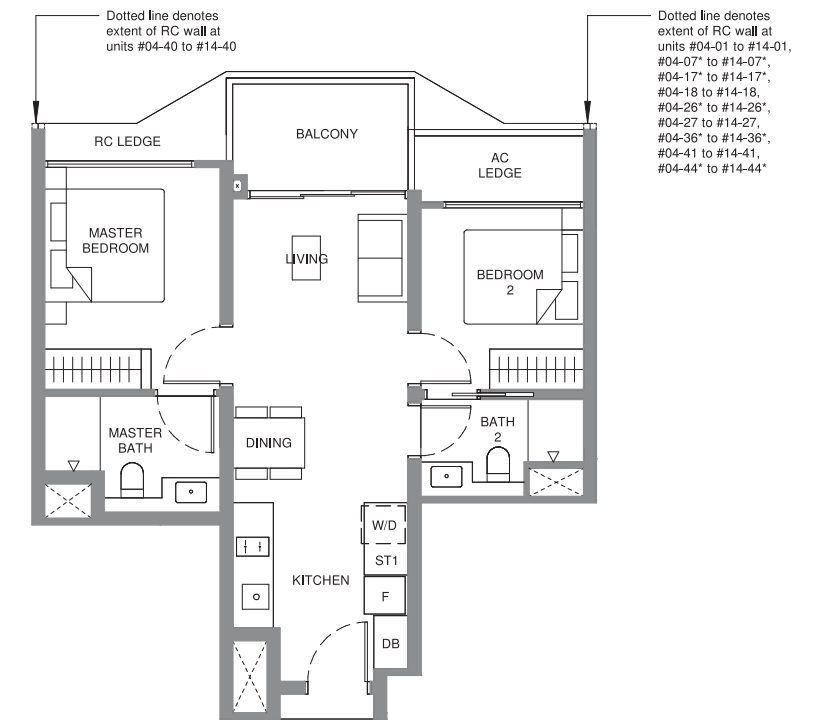
- Block 922 #03-01
#03-07*
- Block 926 #03-17*
#03-18
- Block 928 #03-26*
#03-27
- Block 930 #03-36*
#03-40
- Block 932 #03-41
#03-44*



TYPE B1

58 sqm / 624 sqft

- Block 922 #04-01 TO #14-01
#04-07* TO #14-07*
- Block 926 #04-17* TO #14-17*
#04-18 TO #14-18
- Block 928 #04-26* TO #14-26*
#04-27 TO #14-27
- Block 930 #04-36* TO #14-36*
#04-40 TO #14-40
- Block 932 #04-41 TO #14-41
#04-44* TO #14-44*



LEGEND

F	FRIDGE	PES	PRIVATE ENCLOSED SPACE
W/D	WASHER/ DRYER COMBO	AC	AIR CONDITIONER LEDGE (NON-STRATA)
W&D	WASHER + DRYER	RC	REINFORCED CONCRETE LEDGE (NON-STRATA)
DB	DISTRIBUTION BOARD	☒	VOID SPACE (NON-STRATA)
HS	HOUSEHOLD SHELTER	WM	WALK-IN WARDROBE
WN	WINE CHILLER	ST1	STORE 1
*	MIRROR	ST2	STORE 2



ALL PLANS ARE SUBJECT TO CHANGES BY THE RELEVANT AUTHORITIES.
MEASUREMENTS ARE APPROXIMATE ONLY AND SUBJECT TO FINAL SURVEY.
INFORMATION ACCURATE AT POINT OF PRINTING.
CX ES NO.: ES20250918-50009-CG01 DATED 23 JAN 2026

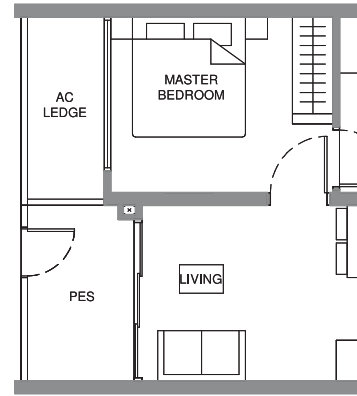


2-Bedroom

TYPE B2-G

59 sqm / 635 sqft

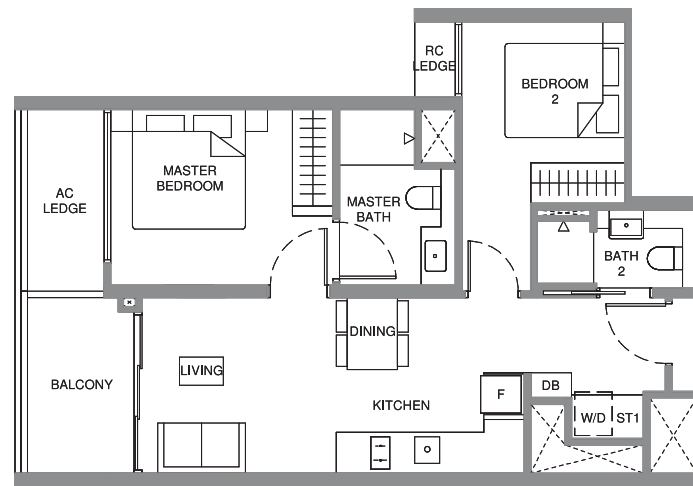
Block 926 #03-20
Block 928 #03-29



TYPE B2

59 sqm / 635 sqft

Block 926 #04-20 TO #14-20
Block 928 #04-29 TO #14-29

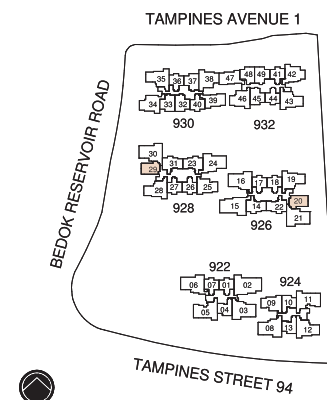


LEGEND

F	FRIDGE	PES	PRIVATE ENCLOSED SPACE
W/D	WASHER/ DRYER COMBO	AC	AIR CONDITIONER LEDGE (NON-STRATA)
W&D	WASHER + DRYER	RC	REINFORCED CONCRETE LEDGE (NON-STRATA)
DB	DISTRIBUTION BOARD	⊠	VOID SPACE (NON-STRATA)
HS	HOUSEHOLD SHELTER	W/W	WALK-IN WARDROBE
WN	WINE CHILLER	ST1	STORE 1
*	MIRROR	ST2	STORE 2



ALL PLANS ARE SUBJECT TO CHANGES BY THE RELEVANT AUTHORITIES.
MEASUREMENTS ARE APPROXIMATE ONLY AND SUBJECT TO FINAL SURVEY.
INFORMATION ACCURATE AT POINT OF PRINTING.
CX ES NO.: ES20250918-50009-CG01 DATED 23 JAN 2026

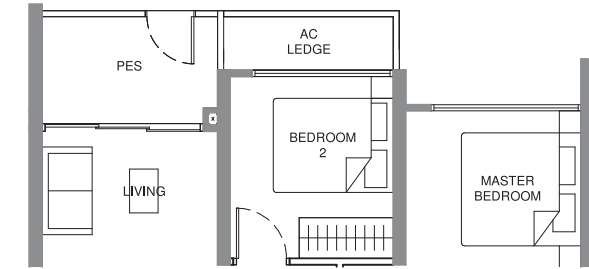


2-Bedroom

TYPE B3-G

62 sqm / 667 sqft

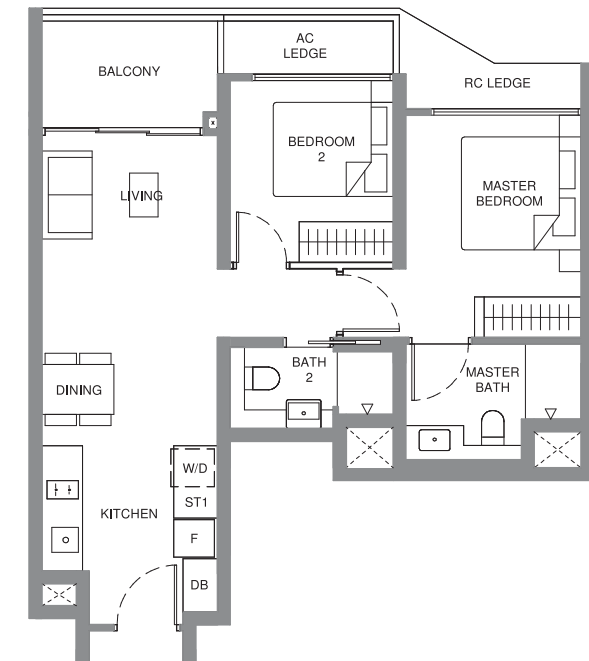
Block 922 #03-04
Block 924 #03-10
#03-13



TYPE B3

62 sqm / 667 sqft

Block 922 #04-04 TO #14-04
Block 924 #04-10 TO #14-10
#04-13 TO #14-13

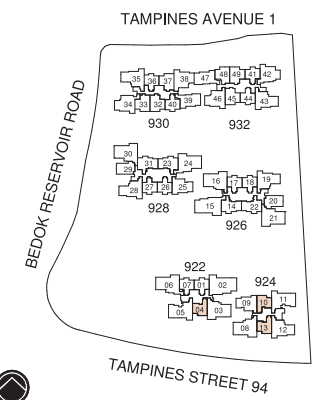


LEGEND

F	FRIDGE	PES	PRIVATE ENCLOSED SPACE
W/D	WASHER/ DRYER COMBO	AC	AIR CONDITIONER LEDGE (NON-STRATA)
W&D	WASHER + DRYER	RC	REINFORCED CONCRETE LEDGE (NON-STRATA)
DB	DISTRIBUTION BOARD	⊠	VOID SPACE (NON-STRATA)
HS	HOUSEHOLD SHELTER	W/W	WALK-IN WARDROBE
WN	WINE CHILLER	ST1	STORE 1
*	MIRROR	ST2	STORE 2



ALL PLANS ARE SUBJECT TO CHANGES BY THE RELEVANT AUTHORITIES.
MEASUREMENTS ARE APPROXIMATE ONLY AND SUBJECT TO FINAL SURVEY.
INFORMATION ACCURATE AT POINT OF PRINTING.
CX ES NO.: ES20250918-50009-CG01 DATED 23 JAN 2026

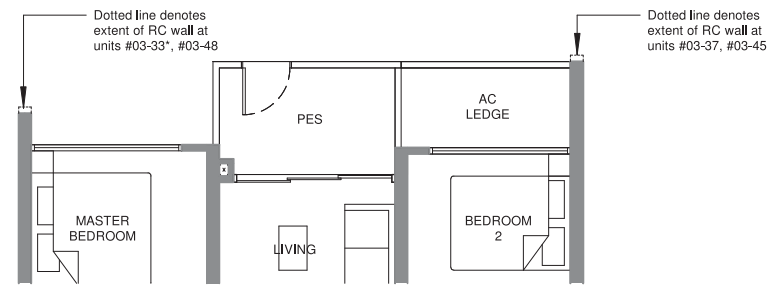


2-Bedroom Premium + Study

TYPE B4-G

65 sqm / 700 sqft

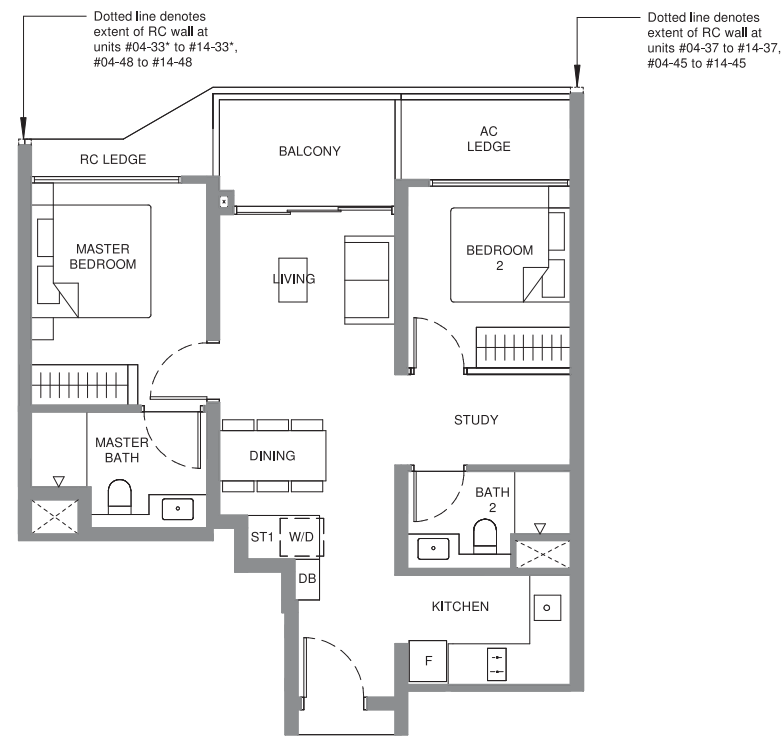
Block 930 #03-32
#03-33*
#03-37
Block 932 #03-45
#03-48
#03-49*



TYPE B4

65 sqm / 700 sqft

Block 930 #04-32 TO #14-32
#04-33* TO #14-33*
#04-37 TO #14-37
Block 932 #04-45 TO #14-45
#04-48 TO #14-48
#04-49* TO #14-49*

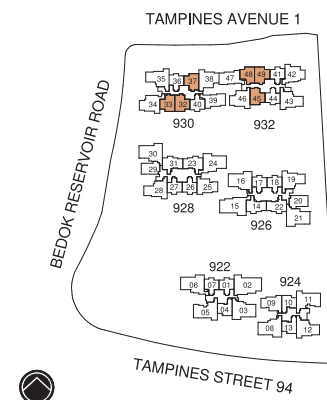


LEGEND

F	FRIDGE	PES	PRIVATE ENCLOSED SPACE
W/D	WASHER/ DRYER COMBO	AC	AIR CONDITIONER LEDGE (NON-STRATA)
W&D	WASHER + DRYER	RC	REINFORCED CONCRETE LEDGE (NON-STRATA)
DB	DISTRIBUTION BOARD	⊠	VOID SPACE (NON-STRATA)
HS	HOUSEHOLD SHELTER	WW	WALK-IN WARDROBE
WN	WINE CHILLER	ST1	STORE 1
*	MIRROR	ST2	STORE 2

0 2m 4m 6m 8m

ALL PLANS ARE SUBJECT TO CHANGES BY THE RELEVANT AUTHORITIES.
MEASUREMENTS ARE APPROXIMATE ONLY AND SUBJECT TO FINAL SURVEY.
INFORMATION ACCURATE AT POINT OF PRINTING.
CX ES NO.: ES20250918-50009-CG01 DATED 23 JAN 2026

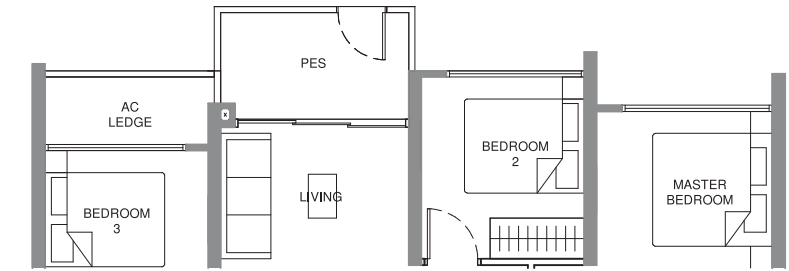


3-Bedroom

TYPE C1-G

75 sqm / 807 sqft

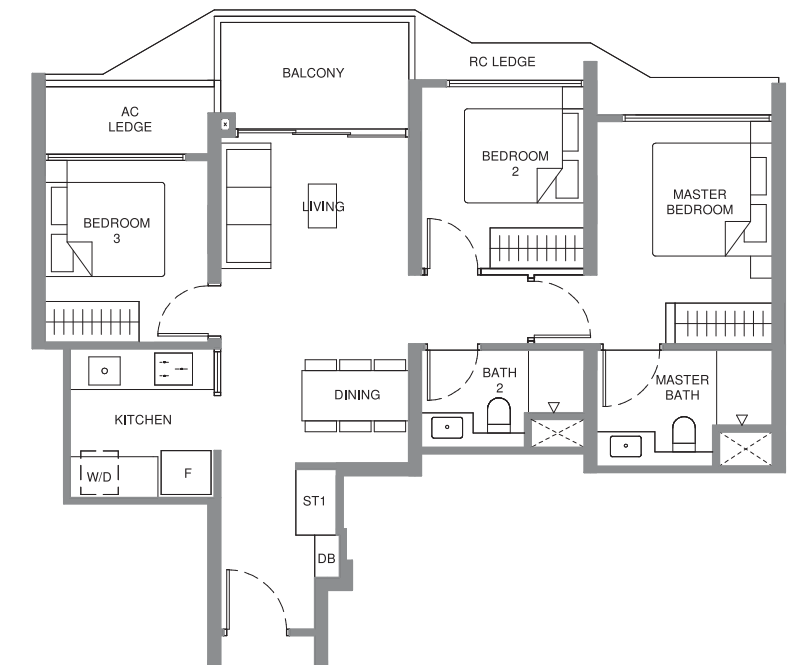
Block 926 #03-14*
#03-22
Block 928 #03-23*
#03-31



TYPE C1

75 sqm / 807 sqft

Block 926 #04-14* TO #14-14*
#04-22 TO #14-22
Block 928 #04-23* TO #14-23*
#04-31 TO #14-31

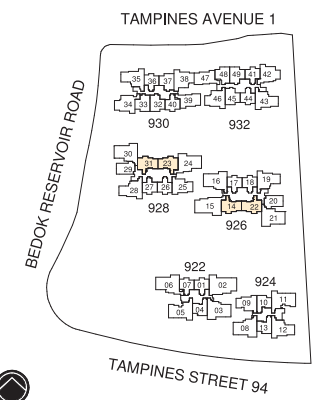


LEGEND

F	FRIDGE	PES	PRIVATE ENCLOSED SPACE
W/D	WASHER/ DRYER COMBO	AC	AIR CONDITIONER LEDGE (NON-STRATA)
W&D	WASHER + DRYER	RC	REINFORCED CONCRETE LEDGE (NON-STRATA)
DB	DISTRIBUTION BOARD	⊠	VOID SPACE (NON-STRATA)
HS	HOUSEHOLD SHELTER	WW	WALK-IN WARDROBE
WN	WINE CHILLER	ST1	STORE 1
*	MIRROR	ST2	STORE 2

0 2m 4m 6m 8m

ALL PLANS ARE SUBJECT TO CHANGES BY THE RELEVANT AUTHORITIES.
MEASUREMENTS ARE APPROXIMATE ONLY AND SUBJECT TO FINAL SURVEY.
INFORMATION ACCURATE AT POINT OF PRINTING.
CX ES NO.: ES20250918-50009-CG01 DATED 23 JAN 2026

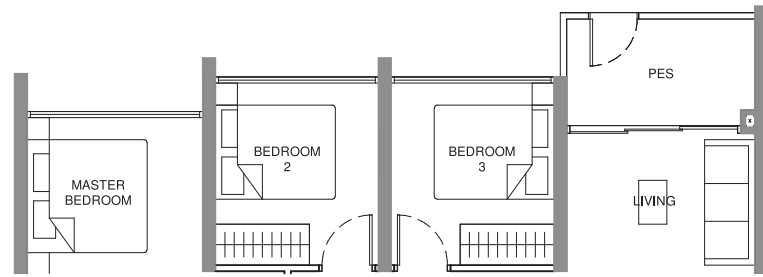


3-Bedroom Deluxe

TYPE C2-G

80 sqm / 861 sqft

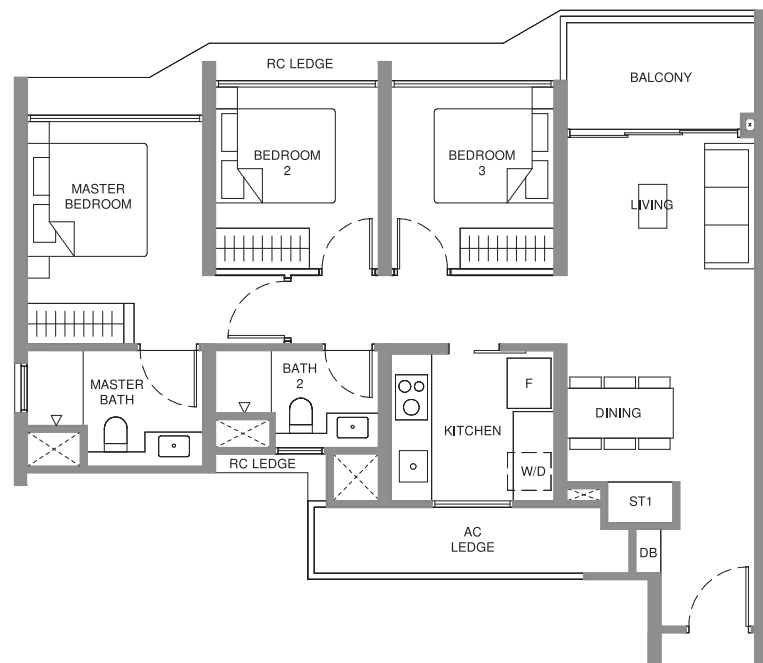
Block 924 #03-09
Block 928 #03-25



TYPE C2

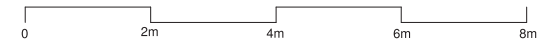
80 sqm / 861 sqft

Block 924 #04-09 TO #14-09
Block 928 #04-25 TO #14-25



LEGEND

F	FRIDGE	PES	PRIVATE ENCLOSED SPACE
W/D	WASHER/ DRYER COMBO	AC	AIR CONDITIONER LEDGE (NON-STRATA)
W&D	WASHER + DRYER	RC	REINFORCED CONCRETE LEDGE (NON-STRATA)
DB	DISTRIBUTION BOARD	⊠	VOID SPACE (NON-STRATA)
HS	HOUSEHOLD SHELTER	WW	WALK-IN WARDROBE
WN	WINE CHILLER	ST1	STORE 1
*	MIRROR	ST2	STORE 2



ALL PLANS ARE SUBJECT TO CHANGES BY THE RELEVANT AUTHORITIES.
MEASUREMENTS ARE APPROXIMATE ONLY AND SUBJECT TO FINAL SURVEY.
INFORMATION ACCURATE AT POINT OF PRINTING.
CX ES NO.: ES20250918-50009-CG01 DATED 23 JAN 2026

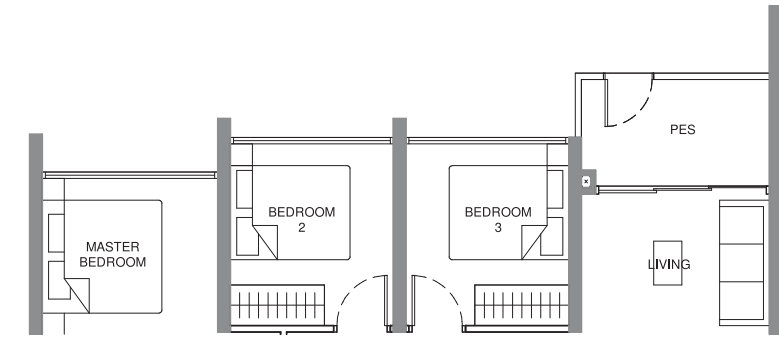


3-Bedroom Deluxe

TYPE C3-G

81 sqm / 872 sqft

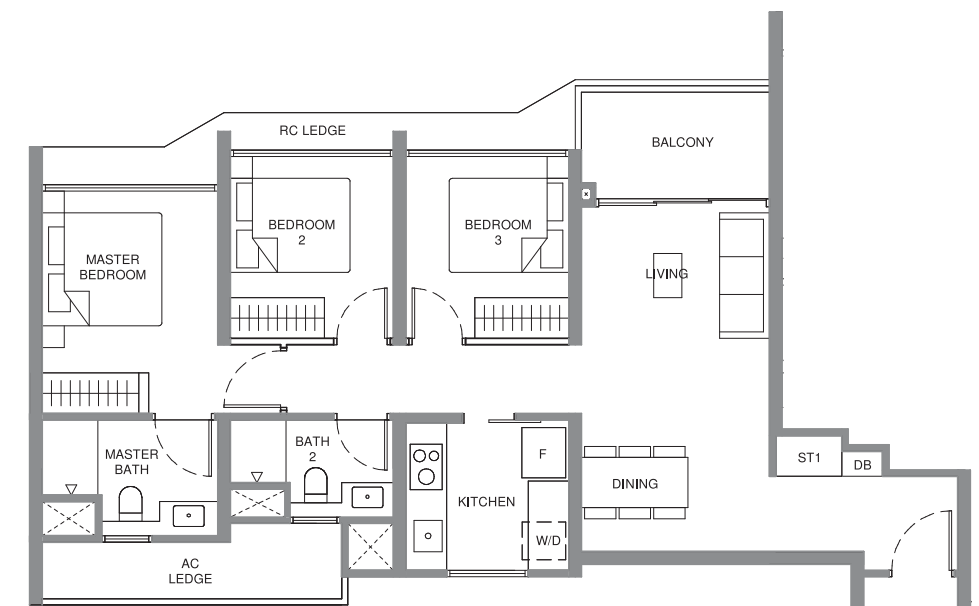
Block 930 #03-39
Block 932 #03-47



TYPE C3

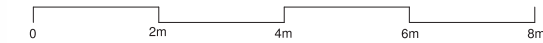
81 sqm / 872 sqft

Block 930 #04-39 TO #14-39
Block 932 #04-47 TO #14-47

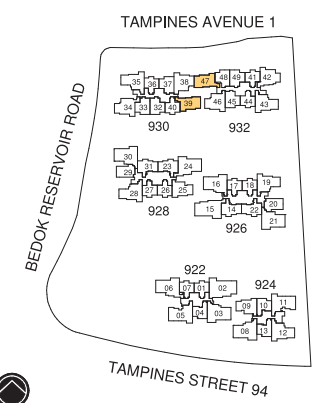


LEGEND

F	FRIDGE	PES	PRIVATE ENCLOSED SPACE
W/D	WASHER/ DRYER COMBO	AC	AIR CONDITIONER LEDGE (NON-STRATA)
W&D	WASHER + DRYER	RC	REINFORCED CONCRETE LEDGE (NON-STRATA)
DB	DISTRIBUTION BOARD	⊠	VOID SPACE (NON-STRATA)
HS	HOUSEHOLD SHELTER	WW	WALK-IN WARDROBE
WN	WINE CHILLER	ST1	STORE 1
*	MIRROR	ST2	STORE 2



ALL PLANS ARE SUBJECT TO CHANGES BY THE RELEVANT AUTHORITIES.
MEASUREMENTS ARE APPROXIMATE ONLY AND SUBJECT TO FINAL SURVEY.
INFORMATION ACCURATE AT POINT OF PRINTING.
CX ES NO.: ES20250918-50009-CG01 DATED 23 JAN 2026

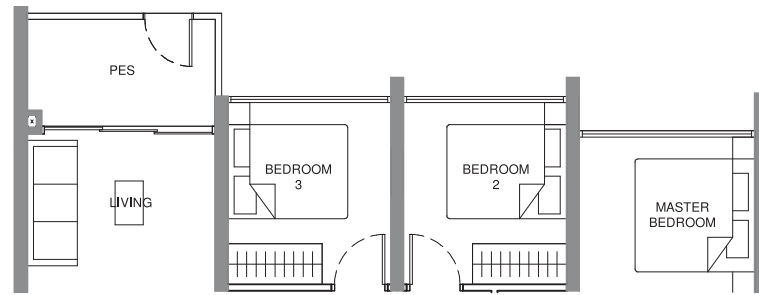


3-Bedroom Premium

TYPE C4-G

92 sqm / 990 sqft

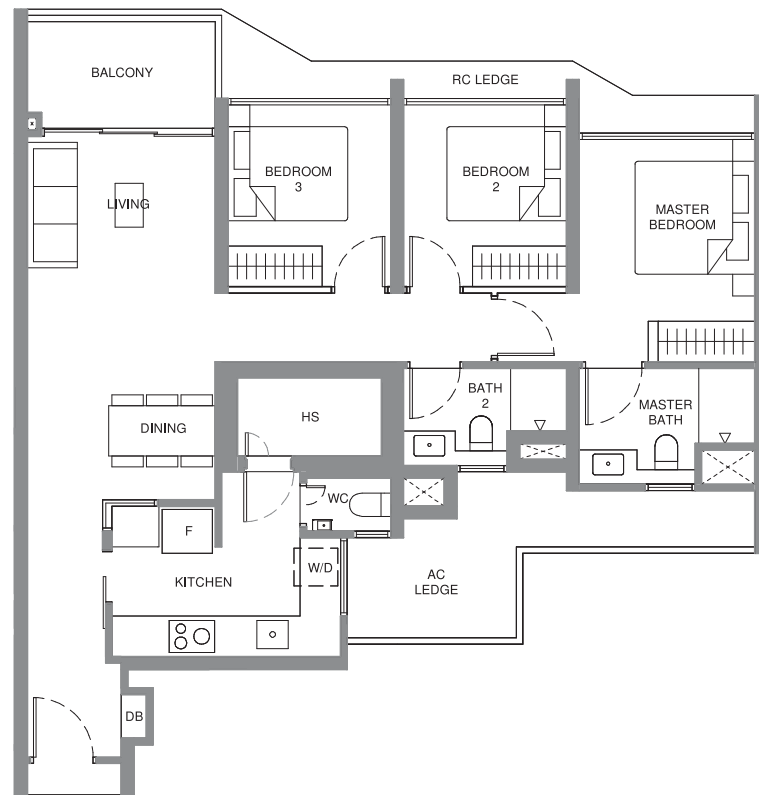
Block 930 #03-38
Block 932 #03-46



TYPE C4

92 sqm / 990 sqft

Block 930 #04-38 TO #14-38
Block 932 #04-46 TO #14-46

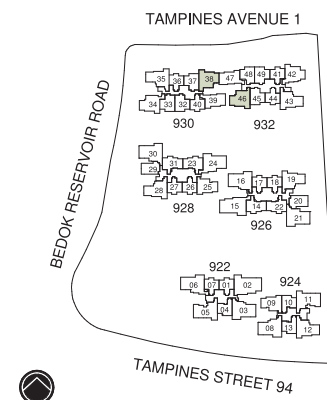


LEGEND

F	FRIDGE	PES	PRIVATE ENCLOSED SPACE
W/D	WASHER/ DRYER COMBO	AC	AIR CONDITIONER LEDGE (NON-STRATA)
W&D	WASHER + DRYER	RC	REINFORCED CONCRETE LEDGE (NON-STRATA)
DB	DISTRIBUTION BOARD	⊠	VOID SPACE (NON-STRATA)
HS	HOUSEHOLD SHELTER	W/W	WALK-IN WARDROBE
WN	WINE CHILLER	ST1	STORE 1
*	MIRROR	ST2	STORE 2

0 2m 4m 6m 8m

ALL PLANS ARE SUBJECT TO CHANGES BY THE RELEVANT AUTHORITIES.
MEASUREMENTS ARE APPROXIMATE ONLY AND SUBJECT TO FINAL SURVEY.
INFORMATION ACCURATE AT POINT OF PRINTING.
CX ES NO.: ES20250918-50009-CG01 DATED 23 JAN 2026

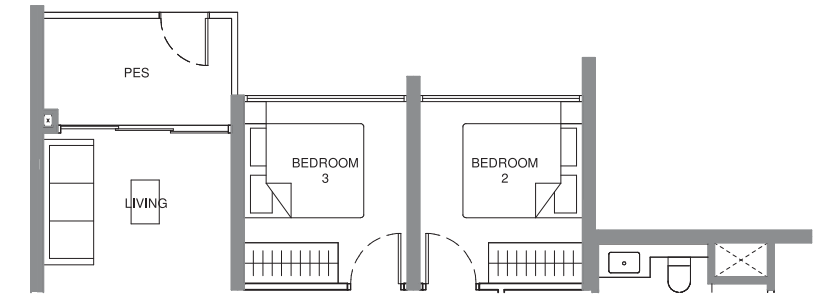


3-Bedroom Premium

TYPE C5-G

94 sqm / 1012 sqft

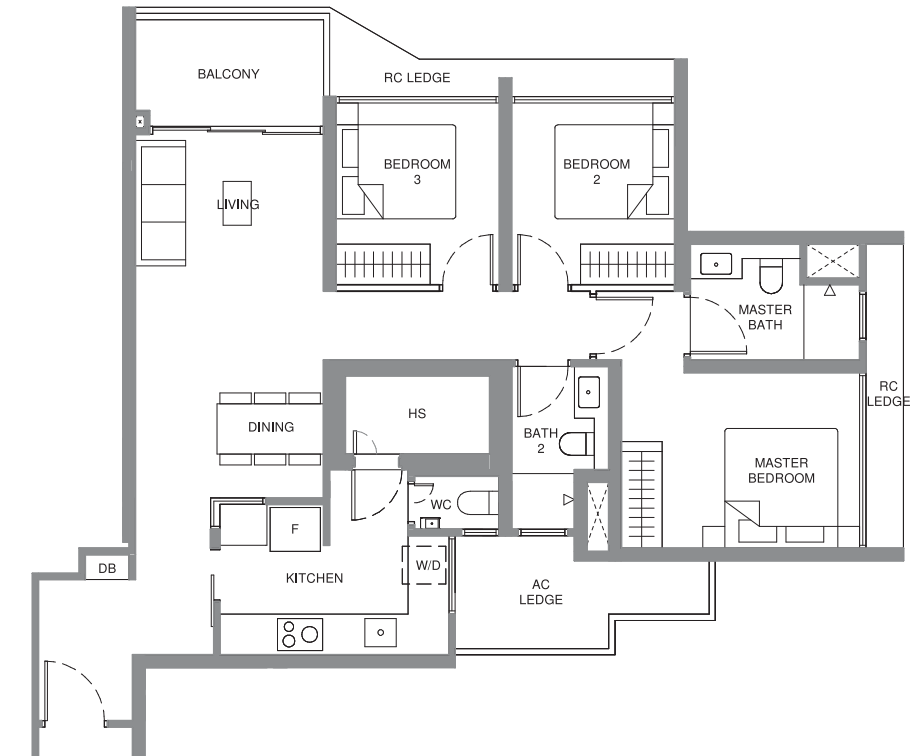
Block 932 #03-42



TYPE C5

94 sqm / 1012 sqft

Block 932 #04-42 TO #14-42

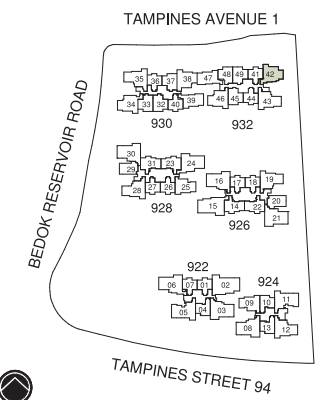


LEGEND

F	FRIDGE	PES	PRIVATE ENCLOSED SPACE
W/D	WASHER/ DRYER COMBO	AC	AIR CONDITIONER LEDGE (NON-STRATA)
W&D	WASHER + DRYER	RC	REINFORCED CONCRETE LEDGE (NON-STRATA)
DB	DISTRIBUTION BOARD	⊠	VOID SPACE (NON-STRATA)
HS	HOUSEHOLD SHELTER	W/W	WALK-IN WARDROBE
WN	WINE CHILLER	ST1	STORE 1
*	MIRROR	ST2	STORE 2

0 2m 4m 6m 8m

ALL PLANS ARE SUBJECT TO CHANGES BY THE RELEVANT AUTHORITIES.
MEASUREMENTS ARE APPROXIMATE ONLY AND SUBJECT TO FINAL SURVEY.
INFORMATION ACCURATE AT POINT OF PRINTING.
CX ES NO.: ES20250918-50009-CG01 DATED 23 JAN 2026

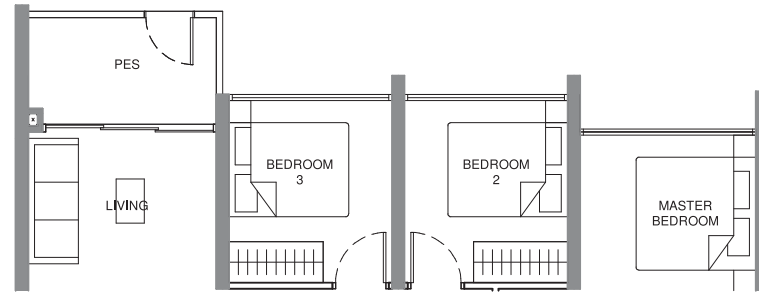


3-Bedroom Premium

TYPE C6-G

95 sqm / 1023 sqft

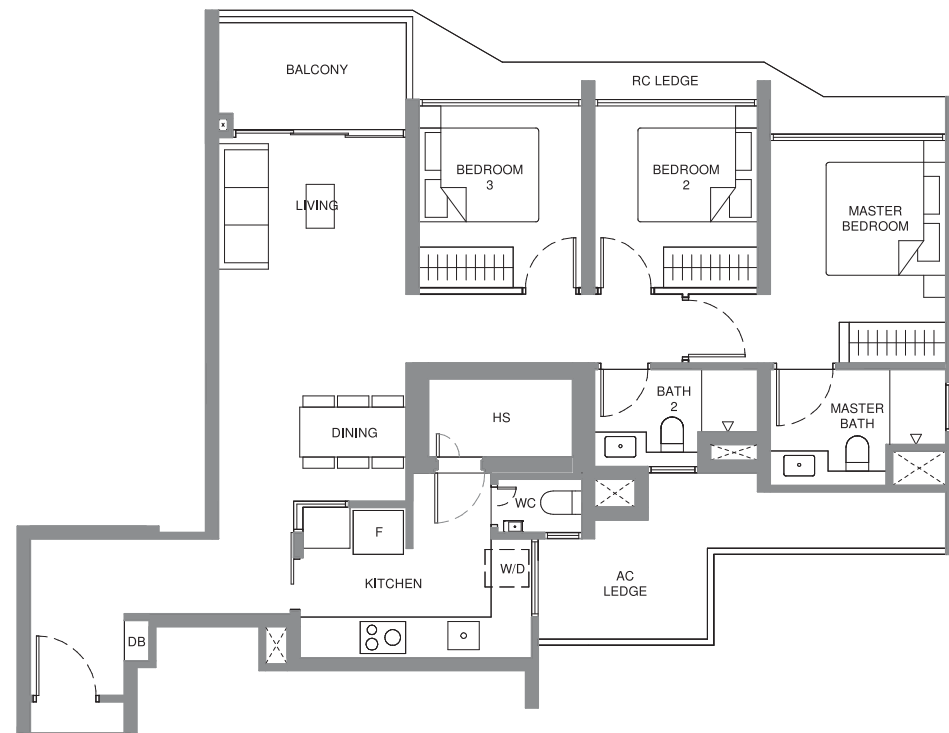
Block 930 #03-34



TYPE C6

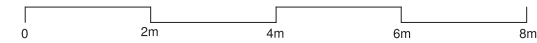
95 sqm / 1023 sqft

Block 930 #04-34 TO #14-34

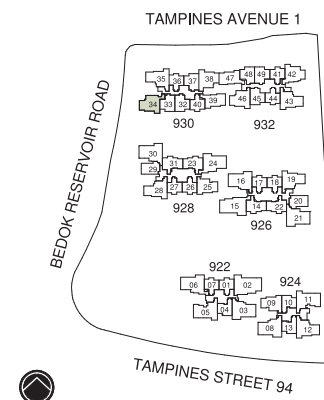


LEGEND

F	FRIDGE	PES	PRIVATE ENCLOSED SPACE
W/D	WASHER/ DRYER COMBO	AC	AIR CONDITIONER LEDGE (NON-STRATA)
W&D	WASHER + DRYER	RC	REINFORCED CONCRETE LEDGE (NON-STRATA)
DB	DISTRIBUTION BOARD	⊠	VOID SPACE (NON-STRATA)
HS	HOUSEHOLD SHELTER	WW	WALK-IN WARDROBE
WN	WINE CHILLER	ST1	STORE 1
*	MIRROR	ST2	STORE 2



ALL PLANS ARE SUBJECT TO CHANGES BY THE RELEVANT AUTHORITIES. MEASUREMENTS ARE APPROXIMATE ONLY AND SUBJECT TO FINAL SURVEY. INFORMATION ACCURATE AT POINT OF PRINTING. CX ES NO.: ES20250918-50009-CG01 DATED 23 JAN 2026



3-Bedroom Premium + Study

TYPE C7-G

98 sqm / 1055 sqft

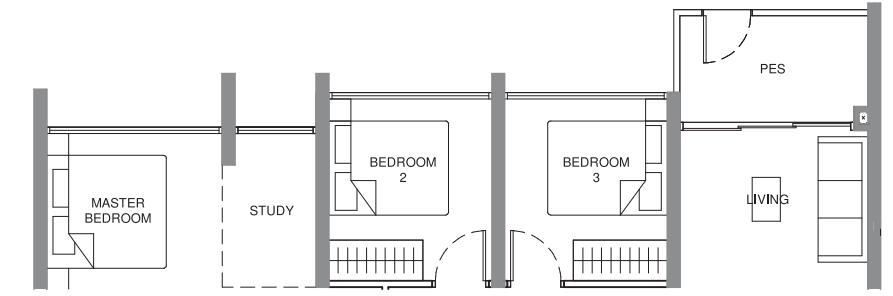
Block 924 #03-12

Block 926 #03-19*

Block 928 #03-28*

Block 930 #03-35

Block 932 #03-43



TYPE C7

98 sqm / 1055 sqft

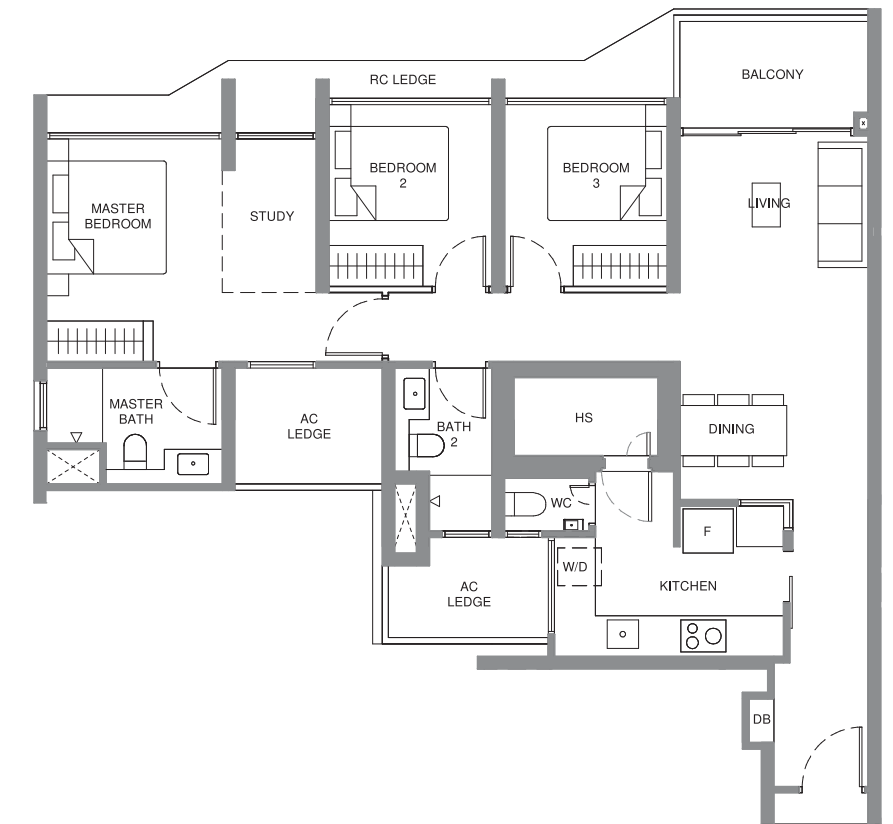
Block 924 #04-12 TO #14-12

Block 926 #04-19* TO #14-19*

Block 928 #04-28* TO #14-28*

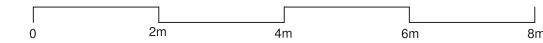
Block 930 #04-35 TO #14-35

Block 932 #04-43 TO #14-43



LEGEND

F	FRIDGE	PES	PRIVATE ENCLOSED SPACE
W/D	WASHER/ DRYER COMBO	AC	AIR CONDITIONER LEDGE (NON-STRATA)
W&D	WASHER + DRYER	RC	REINFORCED CONCRETE LEDGE (NON-STRATA)
DB	DISTRIBUTION BOARD	⊠	VOID SPACE (NON-STRATA)
HS	HOUSEHOLD SHELTER	WW	WALK-IN WARDROBE
WN	WINE CHILLER	ST1	STORE 1
*	MIRROR	ST2	STORE 2



ALL PLANS ARE SUBJECT TO CHANGES BY THE RELEVANT AUTHORITIES. MEASUREMENTS ARE APPROXIMATE ONLY AND SUBJECT TO FINAL SURVEY. INFORMATION ACCURATE AT POINT OF PRINTING. CX ES NO.: ES20250918-50009-CG01 DATED 23 JAN 2026





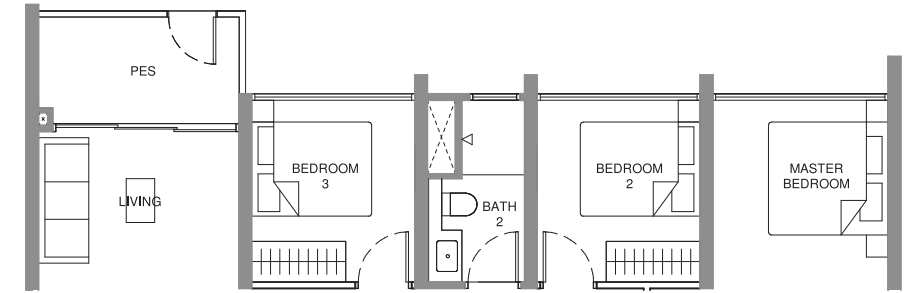
FOR ILLUSTRATION ONLY

4-Bedroom

TYPE D1-G

106 sqm / 1141 sqft

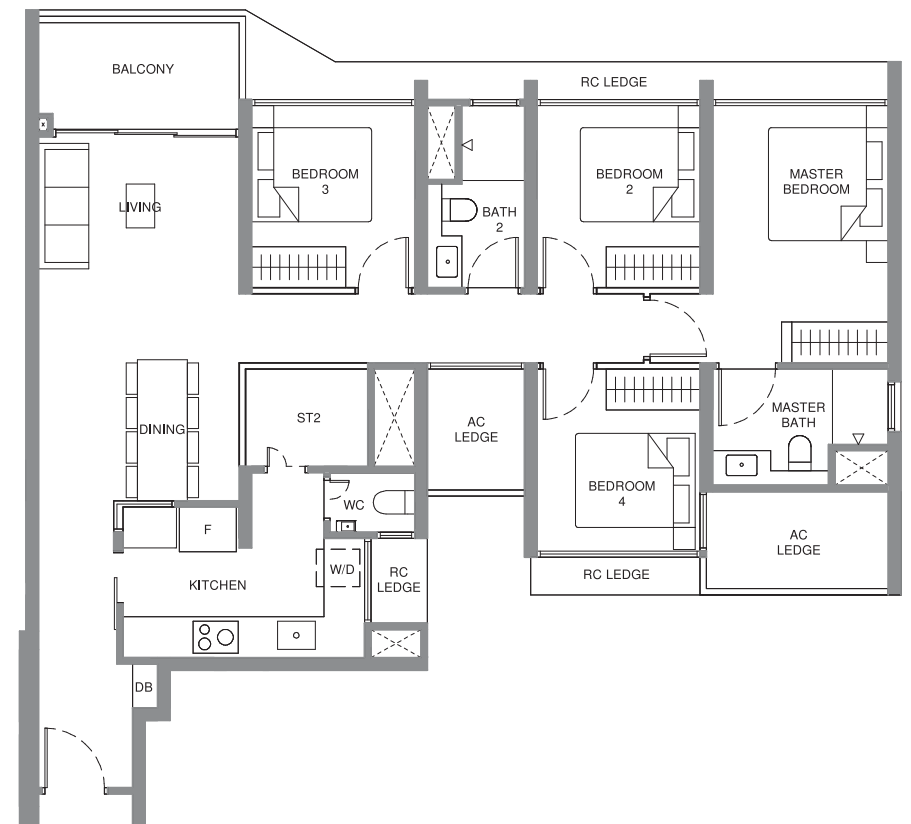
Block 922 #03-05
Block 924 #03-11



TYPE D1

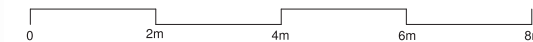
106 sqm / 1141 sqft

Block 922 #04-05 TO #14-05
Block 924 #04-11 TO #14-11

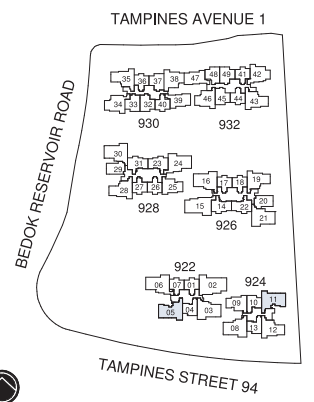


LEGEND

F	FRIDGE	PES	PRIVATE ENCLOSED SPACE
W/D	WASHER/ DRYER COMBO	AC	AIR CONDITIONER LEDGE (NON-STRATA)
W&D	WASHER + DRYER	RC	REINFORCED CONCRETE LEDGE (NON-STRATA)
DB	DISTRIBUTION BOARD	⊠	VOID SPACE (NON-STRATA)
HS	HOUSEHOLD SHELTER	WM	WALK-IN WARDROBE
WN	WINE CHILLER	ST1	STORE 1
*	MIRROR	ST2	STORE 2



ALL PLANS ARE SUBJECT TO CHANGES BY THE RELEVANT AUTHORITIES.
MEASUREMENTS ARE APPROXIMATE ONLY AND SUBJECT TO FINAL SURVEY.
INFORMATION ACCURATE AT POINT OF PRINTING.
CX ES NO.: ES20250918-50009-CG01 DATED 23 JAN 2026

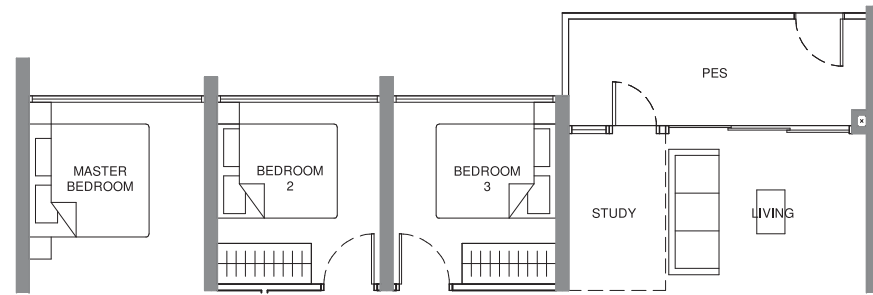


4-Bedroom Premium + Study

TYPE D2-G

111 sqm / 1195 sqft

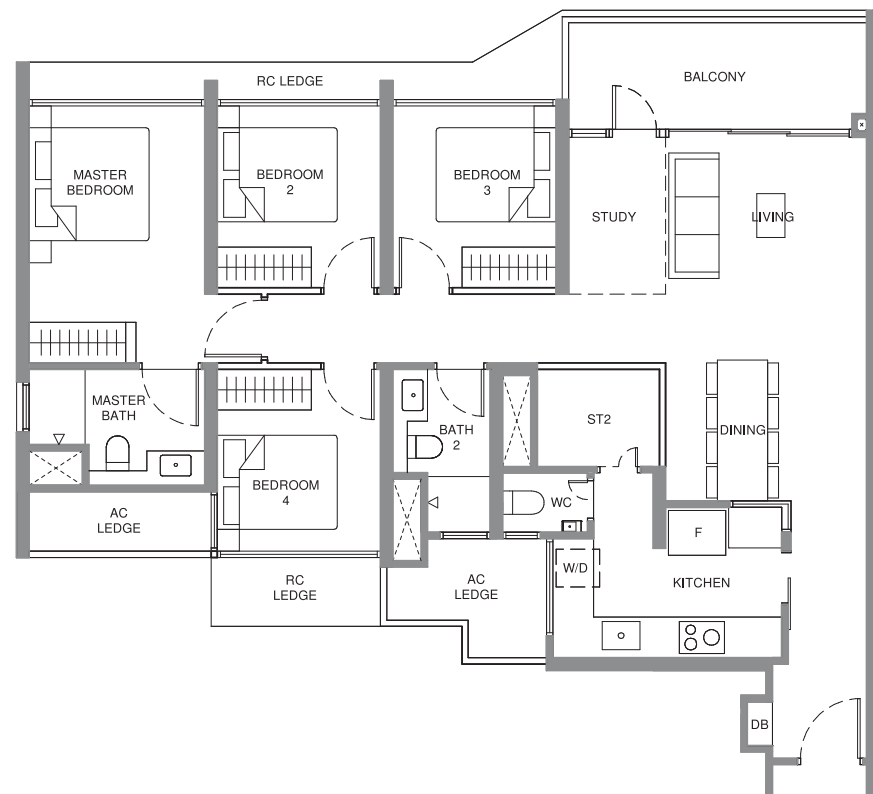
Block 922 #03-03
Block 924 #03-08*
Block 926 #03-16



TYPE D2

111 sqm / 1195 sqft

Block 922 #04-03 TO #14-03
Block 924 #04-08* TO #14-08*
Block 926 #04-16 TO #14-16



LEGEND

F	FRIDGE	PES	PRIVATE ENCLOSED SPACE
W/D	WASHER/ DRYER COMBO	AC	AIR CONDITIONER LEDGE (NON-STRATA)
W&D	WASHER + DRYER	RC	REINFORCED CONCRETE LEDGE (NON-STRATA)
DB	DISTRIBUTION BOARD	∅	VOID SPACE (NON-STRATA)
HS	HOUSEHOLD SHELTER	W/W	WALK-IN WARDROBE
WN	WINE CHILLER	ST1	STORE 1
*	MIRROR	ST2	STORE 2

0 2m 4m 6m 8m

ALL PLANS ARE SUBJECT TO CHANGES BY THE RELEVANT AUTHORITIES.
MEASUREMENTS ARE APPROXIMATE ONLY AND SUBJECT TO FINAL SURVEY.
INFORMATION ACCURATE AT POINT OF PRINTING.
CX ES NO.: ES20250918-50009-CG01 DATED 23 JAN 2026

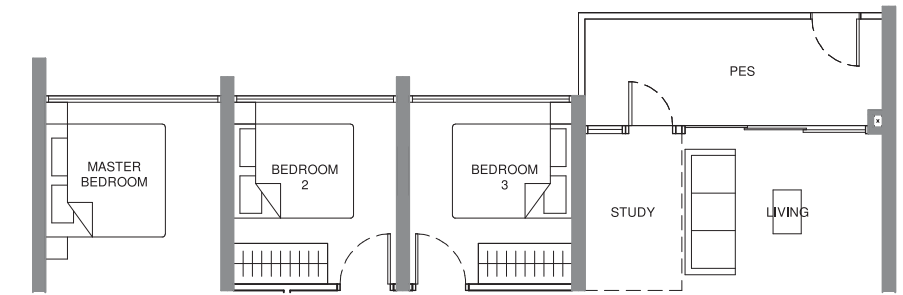


4-Bedroom Premium + Study

TYPE D3-G

114 sqm / 1227 sqft

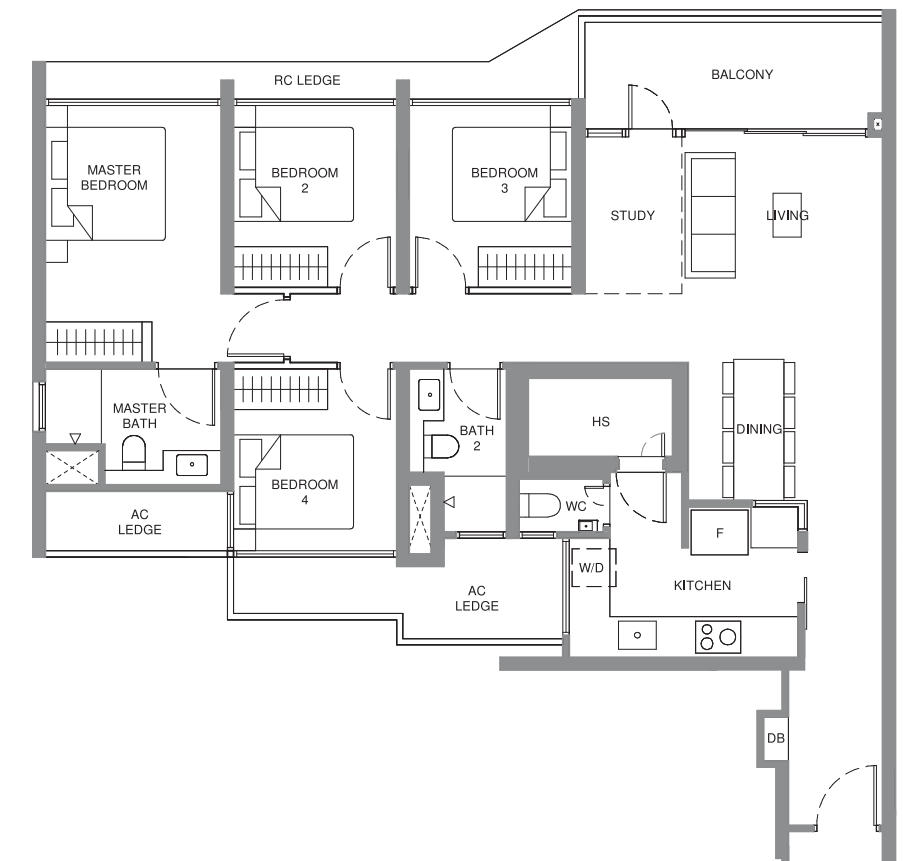
Block 926 #03-21
Block 928 #03-30



TYPE D3

114 sqm / 1227 sqft

Block 926 #04-21 TO #14-21
Block 928 #04-30 TO #14-30

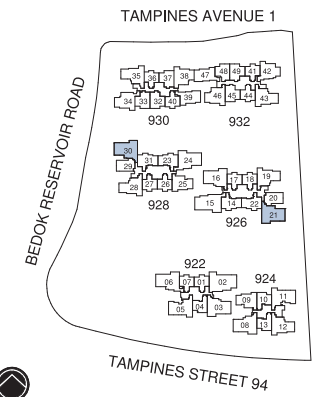


LEGEND

F	FRIDGE	PES	PRIVATE ENCLOSED SPACE
W/D	WASHER/ DRYER COMBO	AC	AIR CONDITIONER LEDGE (NON-STRATA)
W&D	WASHER + DRYER	RC	REINFORCED CONCRETE LEDGE (NON-STRATA)
DB	DISTRIBUTION BOARD	∅	VOID SPACE (NON-STRATA)
HS	HOUSEHOLD SHELTER	W/W	WALK-IN WARDROBE
WN	WINE CHILLER	ST1	STORE 1
*	MIRROR	ST2	STORE 2

0 2m 4m 6m 8m

ALL PLANS ARE SUBJECT TO CHANGES BY THE RELEVANT AUTHORITIES.
MEASUREMENTS ARE APPROXIMATE ONLY AND SUBJECT TO FINAL SURVEY.
INFORMATION ACCURATE AT POINT OF PRINTING.
CX ES NO.: ES20250918-50009-CG01 DATED 23 JAN 2026

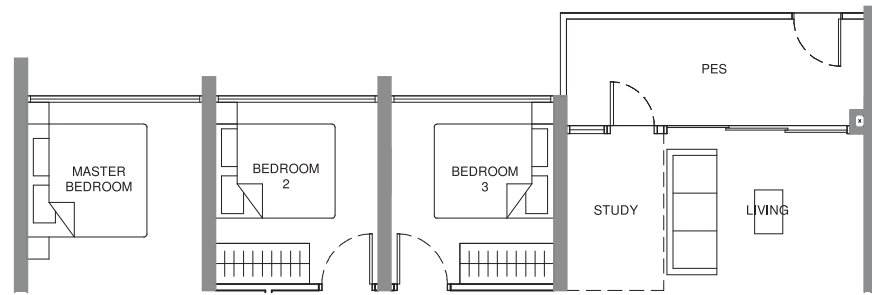


4-Bedroom Premium + Study

TYPE D4-G

115 sqm / 1238 sqft

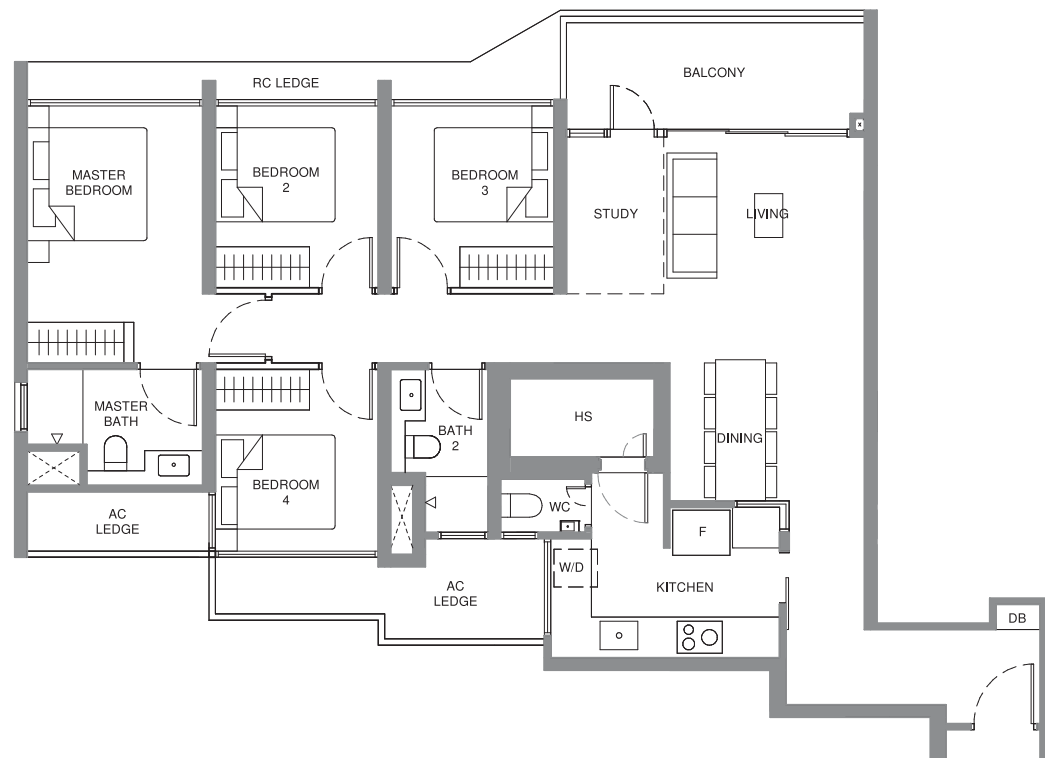
Block 922 #03-06
Block 928 #03-24*



TYPE D4

115 sqm / 1238 sqft

Block 922 #04-06 TO #14-06
Block 928 #04-24* TO #14-24*



LEGEND

F	FRIDGE	PES	PRIVATE ENCLOSED SPACE
W/D	WASHER/ DRYER COMBO	AC	AIR CONDITIONER LEDGE (NON-STRATA)
W&D	WASHER + DRYER	RC	REINFORCED CONCRETE LEDGE (NON-STRATA)
DB	DISTRIBUTION BOARD	⊠	VOID SPACE (NON-STRATA)
HS	HOUSEHOLD SHELTER	WIW	WALK-IN WARDROBE
WN	WINE CHILLER	ST1	STORE 1
*	MIRROR	ST2	STORE 2

0 2m 4m 6m 8m

ALL PLANS ARE SUBJECT TO CHANGES BY THE RELEVANT AUTHORITIES.
MEASUREMENTS ARE APPROXIMATE ONLY AND SUBJECT TO FINAL SURVEY.
INFORMATION ACCURATE AT POINT OF PRINTING.
CX ES NO.: ES20250918-50009-CG01 DATED 23 JAN 2026

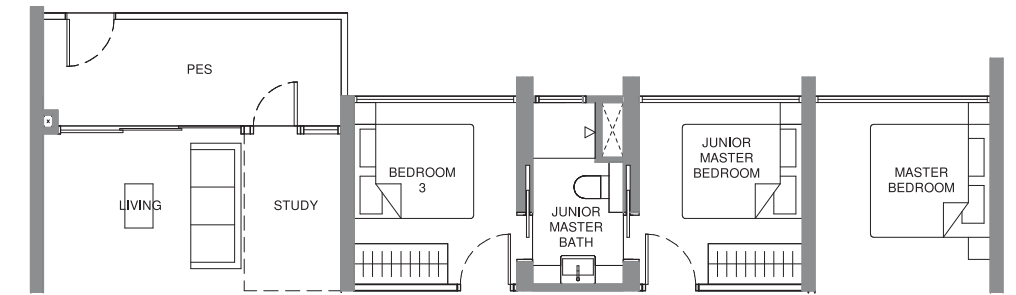


4-Bedroom Luxury + Study

TYPE D5-G

129 sqm / 1389 sqft

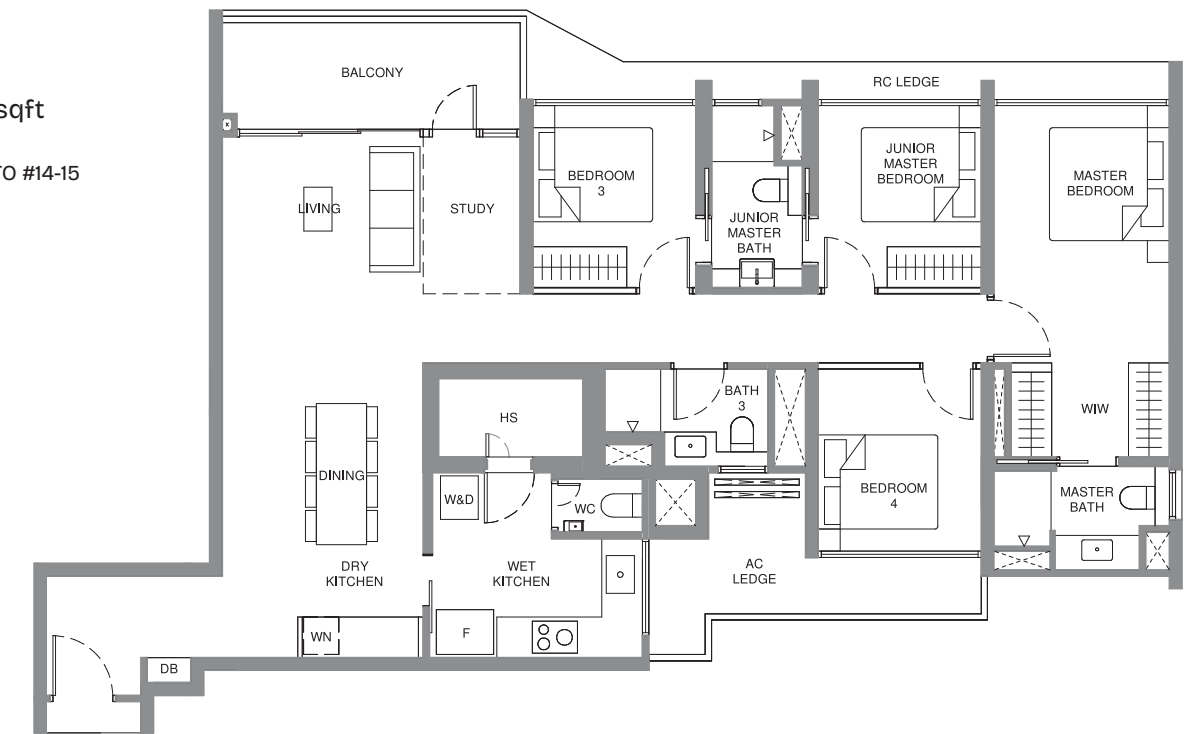
Block 926 #03-15



TYPE D5

129 sqm / 1389 sqft

Block 926 #04-15 TO #14-15

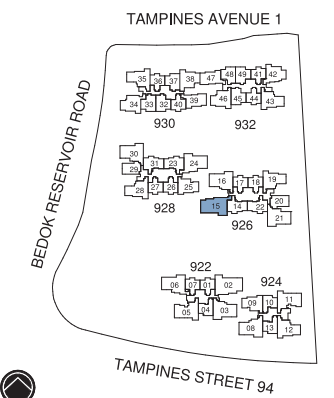


LEGEND

F	FRIDGE	PES	PRIVATE ENCLOSED SPACE
W/D	WASHER/ DRYER COMBO	AC	AIR CONDITIONER LEDGE (NON-STRATA)
W&D	WASHER + DRYER	RC	REINFORCED CONCRETE LEDGE (NON-STRATA)
DB	DISTRIBUTION BOARD	⊠	VOID SPACE (NON-STRATA)
HS	HOUSEHOLD SHELTER	WIW	WALK-IN WARDROBE
WN	WINE CHILLER	ST1	STORE 1
*	MIRROR	ST2	STORE 2

0 2m 4m 6m 8m

ALL PLANS ARE SUBJECT TO CHANGES BY THE RELEVANT AUTHORITIES.
MEASUREMENTS ARE APPROXIMATE ONLY AND SUBJECT TO FINAL SURVEY.
INFORMATION ACCURATE AT POINT OF PRINTING.
CX ES NO.: ES20250918-50009-CG01 DATED 23 JAN 2026

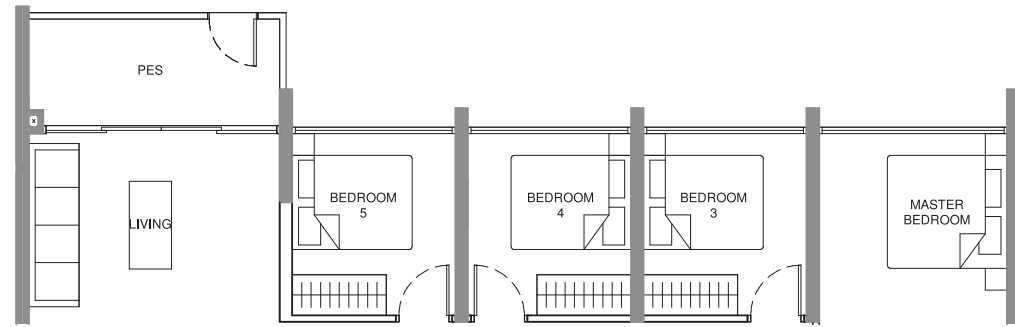


5-Bedroom Luxury

TYPE E1-G

137 sqm / 1475 sqft

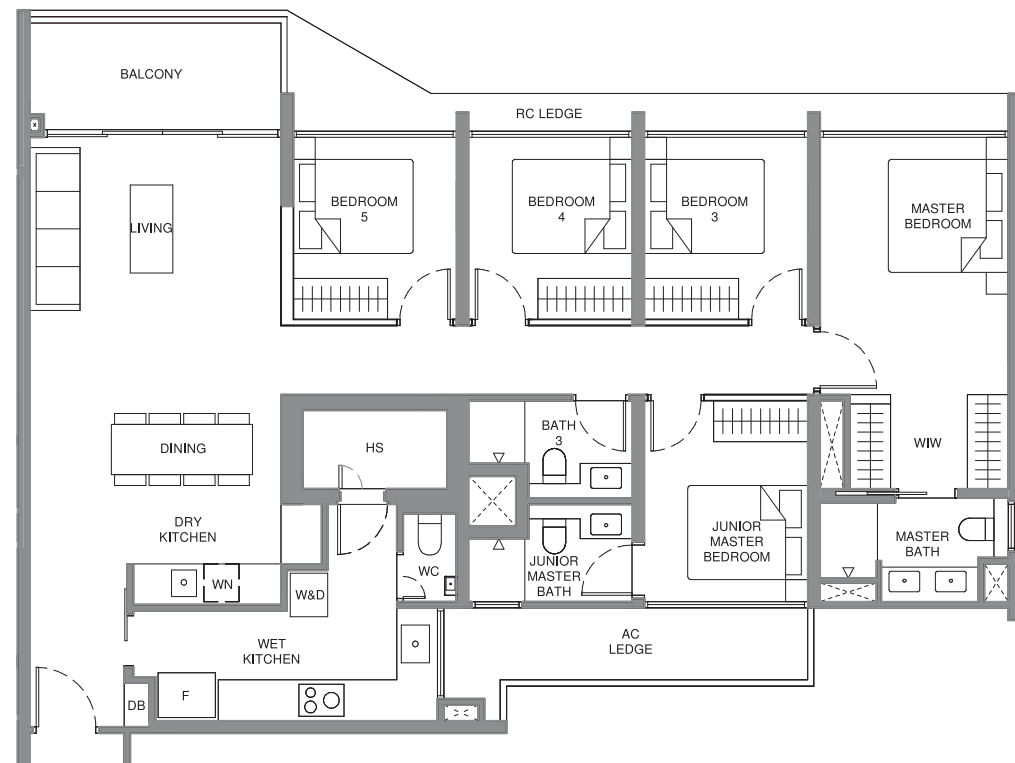
Block 922 #03-02



TYPE E1

137 sqm / 1475 sqft

Block 922 #04-02 TO #14-02

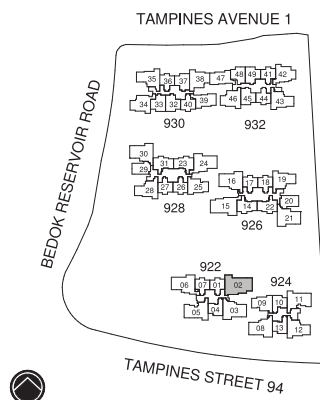


LEGEND

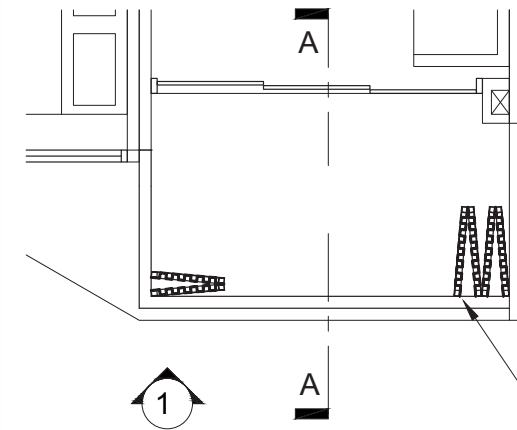
F	FRIDGE	PES	PRIVATE ENCLOSED SPACE
W/D	WASHER/ DRYER COMBO	AC	AIR CONDITIONER LEDGE (NON-STRATA)
W&D	WASHER + DRYER	RC	REINFORCED CONCRETE LEDGE (NON-STRATA)
DB	DISTRIBUTION BOARD	⊠	VOID SPACE (NON-STRATA)
HS	HOUSEHOLD SHELTER	W/W	WALK-IN WARDROBE
WN	WINE CHILLER	ST1	STORE 1
*	MIRROR	ST2	STORE 2

0 2m 4m 6m 8m

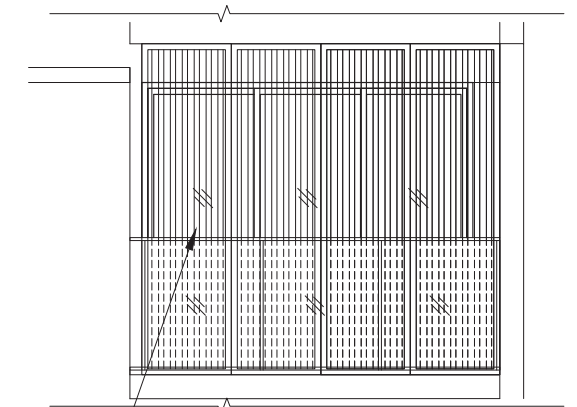
ALL PLANS ARE SUBJECT TO CHANGES BY THE RELEVANT AUTHORITIES.
MEASUREMENTS ARE APPROXIMATE ONLY AND SUBJECT TO FINAL SURVEY.
INFORMATION ACCURATE AT POINT OF PRINTING.
CX ES NO.: ES20250918-50009-CG01 DATED 23 JAN 2026



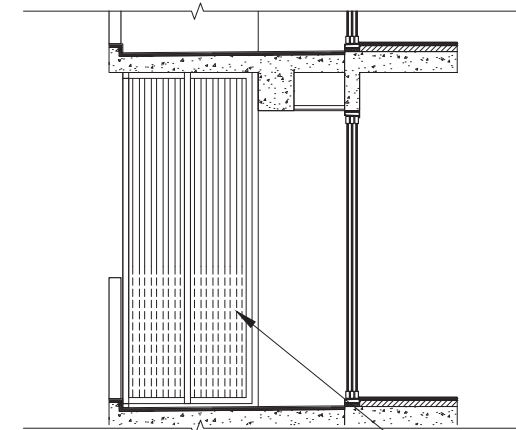
Approved Balcony Screen



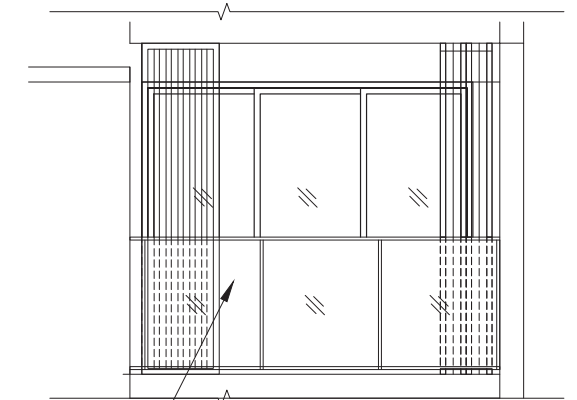
TYPICAL BALCONY SCREEN (OPEN)



TYPICAL BALCONY SCREEN (CLOSED)



TYPICAL BALCONY SCREEN (CLOSED)



TYPICAL BALCONY SCREEN (OPEN)

POWDER COATED ALUMINUM SCREEN
PANELS CAPABLE OF BEING DRAWN OPEN
TO ALLOW NATURAL VENTILATION WITHIN
THE BALCONY AT ALL TIMES

POWDER COATED ALUMINUM SCREEN
PANELS CAPABLE OF BEING DRAWN OPEN
TO ALLOW NATURAL VENTILATION
WITHIN THE BALCONY AT ALL TIMES

NOTES:

- BALCONY SCREEN IS NOT PROVIDED FOR THIS DEVELOPMENT.
- THE BALCONY SHALL NOT BE ENCLOSED UNLESS WITH THE SCREEN APPROVED BY THE RELEVANT AUTHORITIES.
- FINAL SELECTION OF MATERIAL, COLOUR AND DETAILING OF THE SCREEN IS SUBJECT TO MCST APPROVAL.
- APPROVAL FROM MCST IS REQUIRED BEFORE INSTALLATION.
- OWNER MAY OPT TO PRE-INSTALL THE SCREEN.
- ALL INSTALLATION FEES TO BE BORNE BY THE OWNER.
- MEASUREMENTS ARE APPROXIMATE ONLY AND SUBJECT TO FINAL SURVEY.
- TO REFER TO THE MOCK-UP OF APPROVED BALCONY SCREEN INSTALLED.

0 1m 2m 3m

Printing may alter the scale of the drawing.
Please verify the scale on the above scale bar.

Luxury refined through legacy

Pinery Residences is proudly brought to you by Hoi Hup Sunway MCL, an award-winning collaboration between Hoi Hup Realty and Sunway MCL. Combining the expertise and experience of two real estate giants, this stellar partnership has inspired many successful projects such as The Continuum, Terra Hill, Ki Residences, Parc Central Residences EC, Novo Place EC and Otto Place EC.



KI RESIDENCES
Best Private Condo Interior Design
PropertyGuru Asia Property Awards 2021



THE CONTINUUM
Top Development
Landscape Excellence
EdgeProp Excellence Awards 2023



TERRA HILL
Best Premium Condo Interior Design
PropertyGuru Asia Property Awards 2023

HOI HUP REALTY

Hoi Hup Realty Pte Ltd has been a trusted established property developer since 1983, delivering a diverse portfolio of residential, commercial, mixed-use and hospitality developments. From private condominiums and landed homes to commercial offices and integrated developments, our work reflects a consistent commitment to quality, craftsmanship and thoughtful design.

Guided by decades of experience and a pursuit of excellence, Hoi Hup Realty continues to create well-designed living and working spaces, strengthening our vision for sustainable growth as a leading real estate developer in Singapore and beyond.

www.hoihup.com

SUNWAY MCL

Sunway MCL represents Sunway Property in Singapore and builds upon Sunway Property's more than 20-year presence in the city-state's residential market. The company is the new name for Sunway Property's Singapore operations, following Sunway Group's acquisition of MCL Land in 2025, combining Sunway's 50 years of expertise as Malaysia's leading Master Community Developer with MCL's established reputation in premium residential development.

As one of Singapore's leading developers, Sunway MCL focuses on delivering premium and timeless developments defined by design excellence. Backed by Sunway Group's financial strength and integrated ecosystem, the company continues to strengthen its position in Singapore's property landscape.

www.sunwaymcl.com.sg

HOI HUP
REALTY
海峽實業私人有限公司

SUNWAY MCL
A Sunway Property company

Developer: Hoi Hup Sunway Tampines Residential Pte Ltd & Hoi Hup Sunway Tampines Commercial Pte Ltd - Company Reg No.: 202439004H & 202438996Z - Developer's License No.: C1543 - Tenure of Land: 99 years from 7 January 2025 - Lot No.: MK28 Lot 07850C, 80013W at Tampines Street 94 (Tampines Planning Area) - Notice of Vacant Possession: 9 October 2031 - Notice of Completion: 9 October 2034 - CG Approval No.: ES20250918-50009-CG01 dated 23 January 2026 - Encumbrances on the Land: Mortgage in favour of United Overseas Bank Limited

Whilst reasonable care has been taken in the preparation of this brochure and the construction of the scale model and showflat, the Developer does not warrant their accuracy and cannot be held responsible for any inaccuracies or omissions. The statements, information and depictions may not be regarded or relied upon as statements or representations of fact, and they are not intended to form any part of the contract for the sale of the housing units. Visual representations, models, showflat, illustrations, photographs, pictures, drawings, displays and art renderings are artists' impressions of the development only, and are not to be relied upon as representations of fact. The brand, colour and model of all materials, fittings, equipment, finishes, installations and appliances supplied/provided are subject to the Developer's/its architect's selection, market availability and the sole discretion of the Developer.

All information, including equipment, materials, fittings, finishes, installations and appliances, descriptions, plans and specifications, are current at the time of publishing, and are subject to such changes as may be required by the Developer or the relevant authorities, and cannot form part of an offer or contract. All plans and layouts are not to scale and are subject to change/amendments as may be directed or approved by the relevant authorities. The areas indicated in the brochure are approximate measurements only and are subject to final survey. The Developer reserves the right to modify any unit, plans, layouts, the building, the development or any part thereof prior to completion in its absolute discretion or as directed or approved by the architect or relevant authorities.

