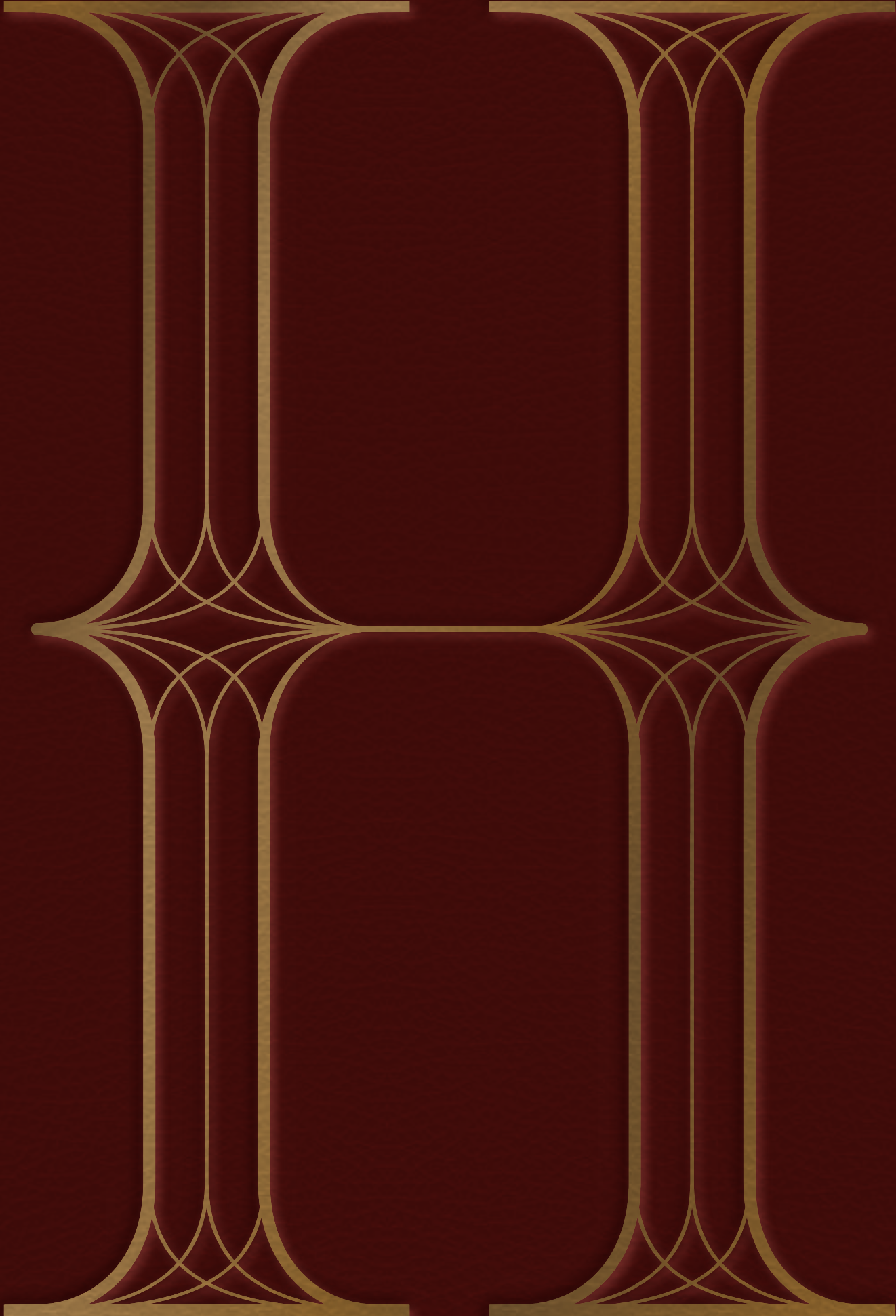


# Hudson Place

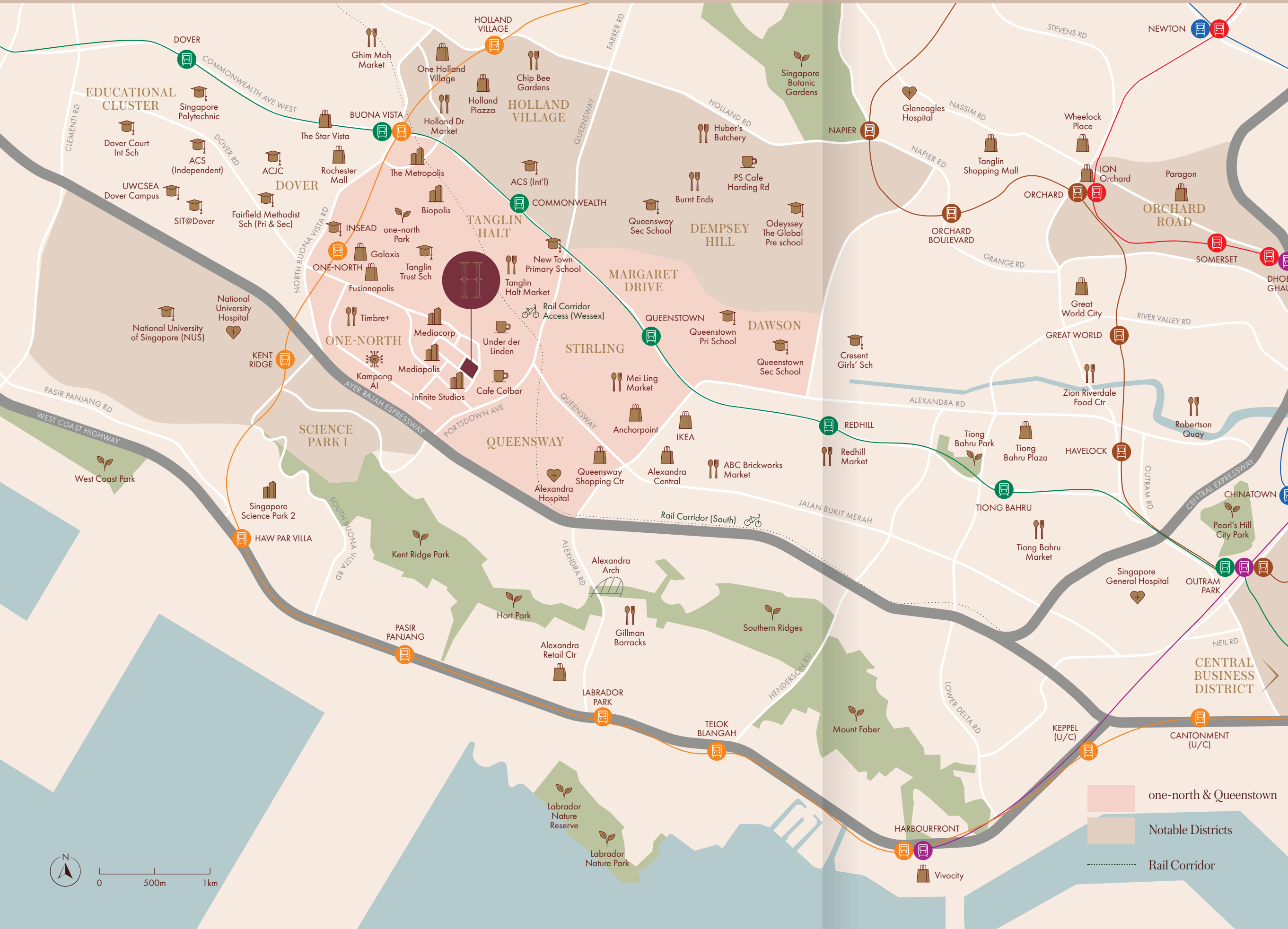
RESIDENCES



# CONNECT SEAMLESSLY TO WORK & PLAY IN THE NEW QUEENSTOWN

Positioned at the meeting point of one-north and Queenstown, Hudson Place Residences enjoys a rare balance of connectivity and familiarity with the mix of innovation and enterprise, with a sense of history, character, and established community.

With the one-north MRT station and expressways nearby, Holland Village and Queenstown are just minutes away offering dining, culture, and neighbourhood charm, while Orchard Road sits comfortably within reach for shopping and entertainment.



## Connectivity

Ayer Rajah Expressway		2 mins drive
Central Expressway		6 mins drive
one-north MRT		4 mins cycle
Buona Vista MRT (Interchange to Circle Line)		1 MRT stop
Harbourfront MRT (Interchange to North-East Line)		6 MRT stops

## Prestigious Education Belt

Tanglin Trust School (International)		5 mins walk
Fairfield Methodist School (Primary)		6 mins cycle
Anglo-Chinese School (Independent)		6 mins cycle
National University of Singapore		8 mins cycle

## Nature

Future Queensway Node		7 mins walk
Rail Corridor (South) Wessex access		7 mins walk
one-north Park		4 mins cycle
Kent Ridge Park		12 mins cycle
Singapore Botanic Gardens		10 mins drive

## Lifestyle & Dining

Bloomsbury Shoppes		1 min walk
Under der Linden		1 min walk
Galaxis Retail		4 mins cycle
Timbre+ One North Food Park		4 mins cycle
Tanglin Halt Market		6 mins cycle
The Star Vista		7 mins cycle
Holland Village		8 mins drive
Orchard Road		11 mins drive

## Offices & Tech Parks

Mediacorp Campus (Mediapolis)		3 mins walk
Razer (Fusionopolis)		3 mins cycle
P&G (Biopolis)		4 mins cycle
The Metropolis		5 mins cycle
Singapore Science Park I & II		6 mins drive

All distances and travelling times are approximates only and taken from Hudson Place Residences to respective destinations.



# SITE PLAN

Thoughtfully arranged across the landscape, Hudson Place Residences balances openness with privacy. Residential towers, water features, gardens, and social spaces are positioned with clarity and intention. Every pathway connects seamlessly, and every facility feels integrated. The masterplan reflects precision in planning and confidence in execution.

## Hudson Arrival

- 1 Arrival Court
- 2 Sculpture
- 3 Water Terrace
- 4 Arrival Lounge

## The Social Courts

- 17 Swing Garden
- 18 Study Pods
- 19 Reading Lounge

## Hudson Linear Park

- 33 Toddler Playground
- 34 Adventure Playground
- 35 Nature Boardwalk

## The Pools

- 5 50m Main Pool
- 6 Main Pool Deck
- 7 Spa Seats
- 8 Aqua Gym
- 9 Bubble Jets
- 10 Social Pool
- 11 Social Deck
- 12 Shower
- 13 BBQ Pavilion
- 14 All-Day Dining
- 15 Pool Side Counter
- 16 Drinking Fountain

## Hudson Club

- 20 Gym
- 21 Changing Rooms
- 22 Steam Rooms
- 23 Social Lounge
- 24 The Atlas Club
- 25 The Metropolitan Club
- 26 Courtyard Garden

## Hudson Plaza

- 36 Community Plaza
- 37 Open Lawn
- 38 Retail Space
- 39 Washrooms

## Hudson Green

- 27 Outdoor Fitness
- 28 Outdoor Smart Gym
- 29 Pets' Drinking Fountain
- 30 Pets' Paw Wash
- 31 Bicycle Parking
- 32 Bicycle Service Station

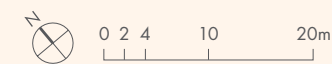
## Hudson Terrace (Upper 1st Storey)

- 40 Tennis Court
- 41 Table Tennis
- 42 Outdoor Chess
- 43 Outdoor Dartboard
- 44 Outdoor Lounge
- 45 Outdoor Dining
- 46 BBQ Chef Counter
- 47 BBQ Dining Pavilion
- 48 Rooftop Lounge

## Ancillary

- A Entrance
- B Exit
- C Side Gate
- D Guard House
- E Management Office
- F Bin Centre (Basement)
- G Substation (Basement)
- H Ventilation Shaft
- I Generator Set
- ☐ Water Tank (Roof)

# ELEGANTLY PLANNED



# UNIT DISTRIBUTION CHART



Block 18

UNIT/ FLOOR	01	02	03	04	05	06	07	08
15	PH1 (15-02)		C2	B1b	B1c	C1	PH3 (15-07)	
14	B2	D1a	C2	B1b	B1c	C1	D1b	B1a
13	B2	D1a	C2	B1b	B1c	C1	D1b	B1a
12	B2	D1a	C2	B1b	B1c	C1	D1b	B1a
11	B2	D1a	C2	B1b	B1c	C1	D1b	B1a
10	B2	D1a	C2	B1b	B1c	C1	D1b	B1a
09	B2	D1a	C2	B1b	B1c	C1	D1b	B1a
08	B2	D1a	C2	B1b	B1c	C1	D1b	B1a
07	B2	D1a	C2	B1b	B1c	C1	D1b	B1a
06	B2	D1a	C2	B1b	B1c	C1	D1b	B1a
05	B2	D1a	C2	B1b	B1c	C1	D1b	B1a
04	B2	D1a	C2	B1b	B1c	C1	D1b	B1a
03	B2	D1a	C2	B1b	B1c	C1	D1b	B1a
02	B2	D1a	C2	B1b	B1c	C1	D1b	B1a
01	LANDSCAPE LEVEL							
BASEMENT	BASEMENT 1 CARPARK							

## UNIT TYPE

2-Bedroom Premium	B1a	4-Bedroom Premium	D1a
	B1b		D1b
	B1c	4-Bedroom Suite + Flexi	D2a
	B1d		D2b
2-Bedroom Premium + Study	B2	Penthouse	PH1
	B3		PH2
			PH3
3-Bedroom Deluxe	C1		PH4
3-Bedroom Premium	C2		PH5
	C3		
3-Bedroom Premium + Study	C4		

Block 20

UNIT/ FLOOR	09	10	11	12	13	14	15	16	17	18
23	B1a	B3	C3	PH2 (23-12)		B3	PH5 (23-16)		PH4 (23-17)	
22	B1a	B3	C3	C4	B3	B3	B1b	D2a	D2b	B1d
21	B1a	B3	C3	C4	B3	B3	B1b	D2a	D2b	B1d
20	B1a	B3	C3	C4	B3	B3	B1b	D2a	D2b	B1d
19	B1a	B3	C3	C4	B3	B3	B1b	D2a	D2b	B1d
18	B1a	B3	C3	C4	B3	B3	B1b	D2a	D2b	B1d
17	B1a	B3	C3	C4	B3	B3	B1b	D2a	D2b	B1d
16	B1a	B3	C3	C4	B3	B3	B1b	D2a	D2b	B1d
15	B1a	B3	C3	C4	B3	B3	B1b	D2a	D2b	B1d
14	B1a	B3	C3	C4	B3	B3	B1b	D2a	D2b	B1d
13	B1a	B3	C3	C4	B3	B3	B1b	D2a	D2b	B1d
12	B1a	B3	C3	C4	B3	B3	B1b	D2a	D2b	B1d
11	B1a	B3	C3	C4	B3	B3	B1b	D2a	D2b	B1d
10	B1a	B3	C3	C4	B3	B3	B1b	D2a	D2b	B1d
09	B1a	B3	C3	C4	B3	B3	B1b	D2a	D2b	B1d
08	B1a	B3	C3	C4	B3	B3	B1b	D2a	D2b	B1d
07	B1a	B3	C3	C4	B3	B3	B1b	D2a	D2b	B1d
06	B1a	B3	C3	C4	B3	B3	B1b	D2a	D2b	B1d
05	B1a	B3	C3	C4	B3	B3	B1b	D2a	D2b	B1d
04	B1a	B3	C3	C4	B3	B3	B1b	D2a	D2b	B1d
03	B1a	B3	C3	C4	B3	B3	B1b	D2a	D2b	B1d
02	B1a	B3	C3	C4	B3	B3	B1b	D2a	D2b	B1d
01	LANDSCAPE LEVEL									
BASEMENT	BASEMENT 1 CARPARK									

# 2 Bedroom Premium

## TYPE B1a

60 sqm (646 sqft)

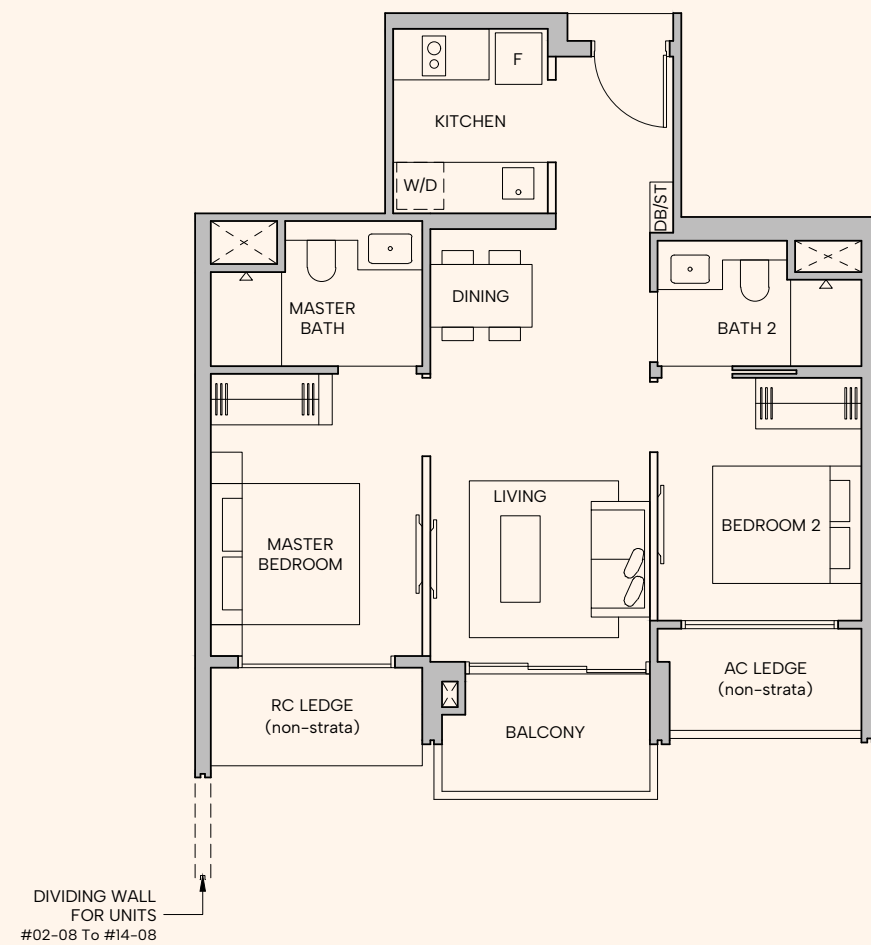
### BLOCK 20

#02-09 to #23-09

\* Mirrored Units

### Block 18

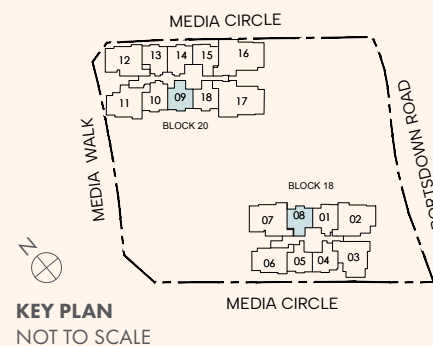
#02-08\* to #14-08\*



### LEGEND

**F** FRIDGE **W/D** WASHER CUM DRYER **DB** DISTRIBUTION BOARD **ST** STORE  
**AC** AIR-CONDITIONER **RC** REINFORCED CONCRETE

DISCLAIMER: Area includes balcony where applicable, and excludes among others, the Air-Conditioner (AC) ledge, airwell, Reinforced Concrete (RC) Ledge and Services Voids. Please refer to the key plan for orientation. All floor plans are approximate measurements only and are subject to government re-survey. Balconies are not to be enclosed except with a balcony screen which has been approved and complies with the Competent Authority's guidelines. The cost of screen and installation shall be borne by the purchaser. For an illustration of the approved balcony screen, please refer to Annex A of this brochure.



# 2 Bedroom Premium

## TYPE B1b

60 sqm (646 sqft)

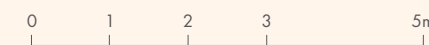
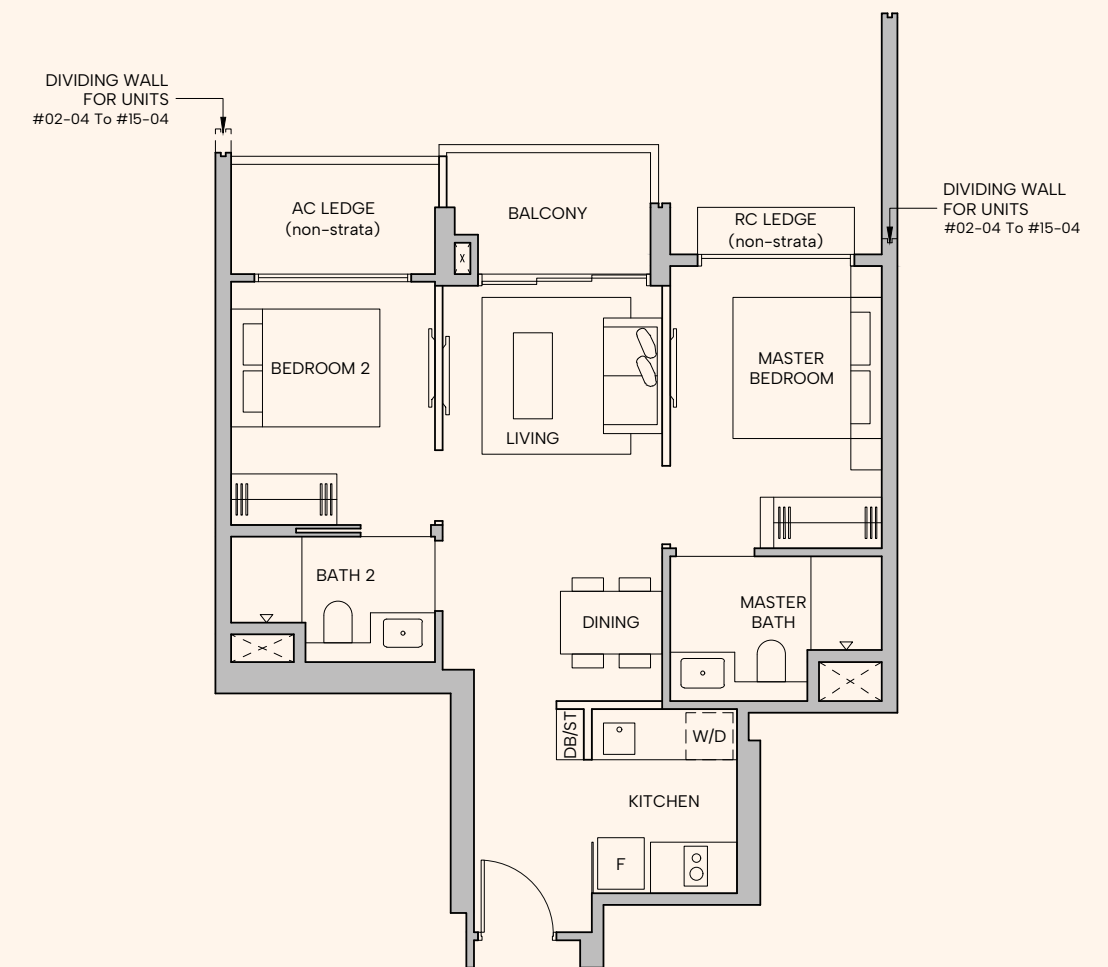
### BLOCK 20

#02-15 to #22-15

\* Mirrored Units

### Block 18

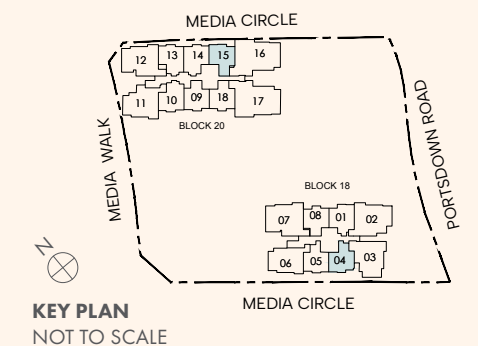
#02-04\* to #15-04\*



### LEGEND

**F** FRIDGE **W/D** WASHER CUM DRYER **DB** DISTRIBUTION BOARD **ST** STORE  
**AC** AIR-CONDITIONER **RC** REINFORCED CONCRETE

DISCLAIMER: Area includes balcony where applicable, and excludes among others, the Air-Conditioner (AC) ledge, airwell, Reinforced Concrete (RC) Ledge and Services Voids. Please refer to the key plan for orientation. All floor plans are approximate measurements only and are subject to government re-survey. Balconies are not to be enclosed except with a balcony screen which has been approved and complies with the Competent Authority's guidelines. The cost of screen and installation shall be borne by the purchaser. For an illustration of the approved balcony screen, please refer to Annex A of this brochure.



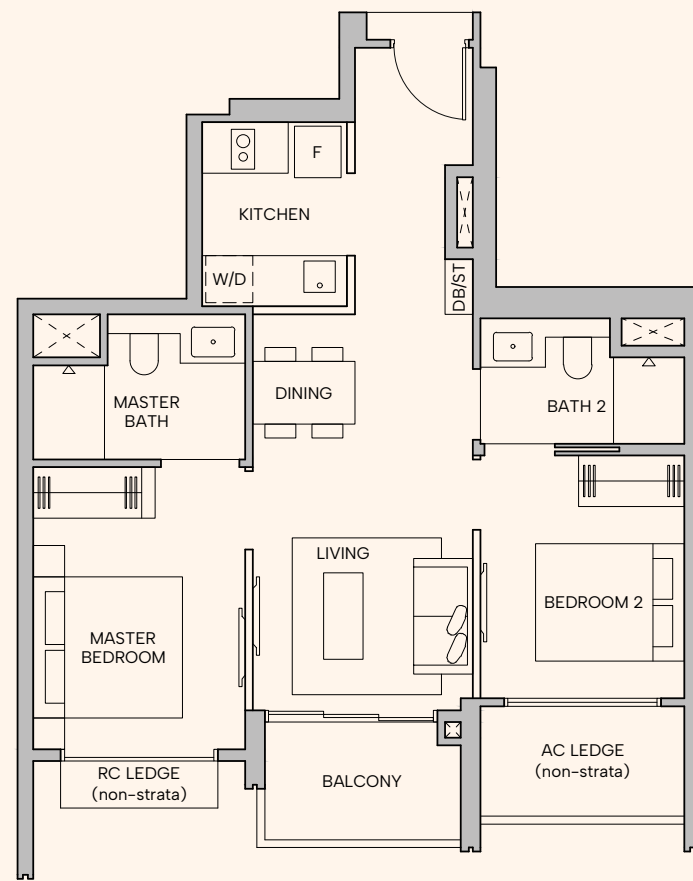
# 2 Bedroom Premium

## TYPE B1c

60 sqm (646 sqft)

### BLOCK 18

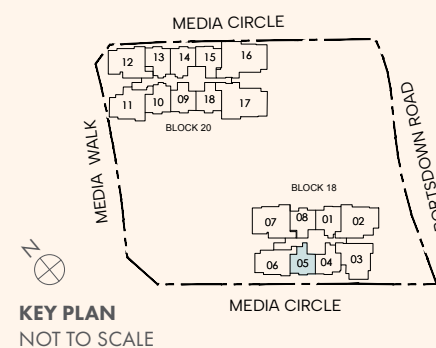
#02-05 to #15-05



### LEGEND

**F** FRIDGE **W/D** WASHER CUM DRYER **DB** DISTRIBUTION BOARD **ST** STORE  
**AC** AIR-CONDITIONER **RC** REINFORCED CONCRETE

DISCLAIMER: Area includes balcony where applicable, and excludes among others, the Air-Conditioner (AC) ledge, airwell, Reinforced Concrete (RC) Ledge and Services Voids. Please refer to the key plan for orientation. All floor plans are approximate measurements only and are subject to government re-survey. Balconies are not to be enclosed except with a balcony screen which has been approved and complies with the Competent Authority's guidelines. The cost of screen and installation shall be borne by the purchaser. For an illustration of the approved balcony screen, please refer to Annex A of this brochure.



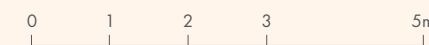
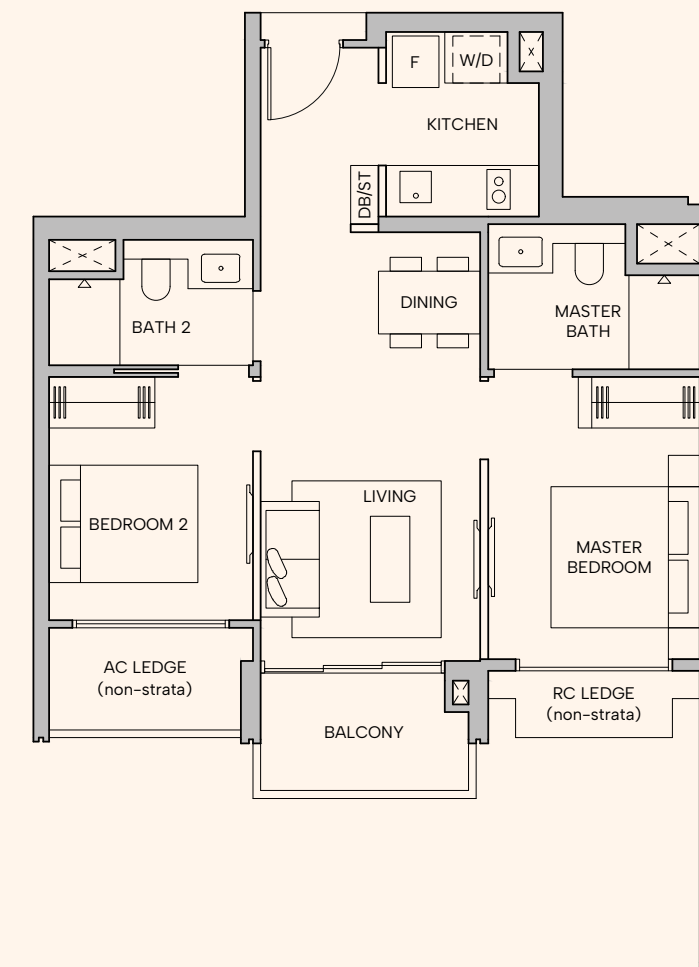
# 2 Bedroom Premium

## TYPE B1d

60 sqm (646 sqft)

### BLOCK 20

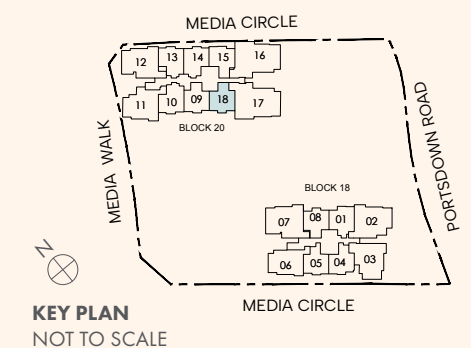
#02-18 to #22-18



### LEGEND

**F** FRIDGE **W/D** WASHER CUM DRYER **DB** DISTRIBUTION BOARD **ST** STORE  
**AC** AIR-CONDITIONER **RC** REINFORCED CONCRETE

DISCLAIMER: Area includes balcony where applicable, and excludes among others, the Air-Conditioner (AC) ledge, airwell, Reinforced Concrete (RC) Ledge and Services Voids. Please refer to the key plan for orientation. All floor plans are approximate measurements only and are subject to government re-survey. Balconies are not to be enclosed except with a balcony screen which has been approved and complies with the Competent Authority's guidelines. The cost of screen and installation shall be borne by the purchaser. For an illustration of the approved balcony screen, please refer to Annex A of this brochure.



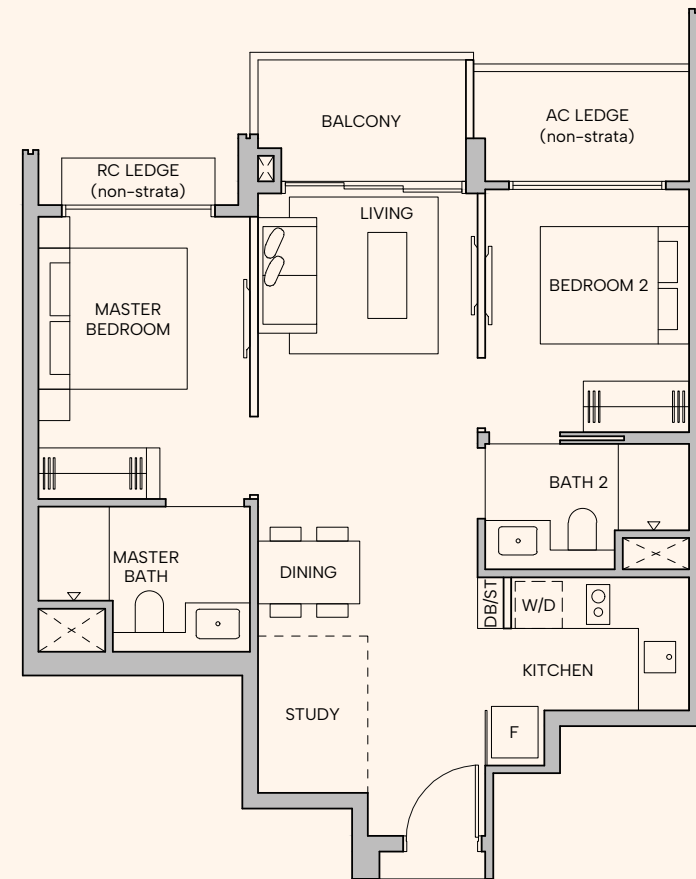
# 2 Bedroom Premium + Study

## TYPE B2

64 sqm (689 sqft)

### BLOCK 18

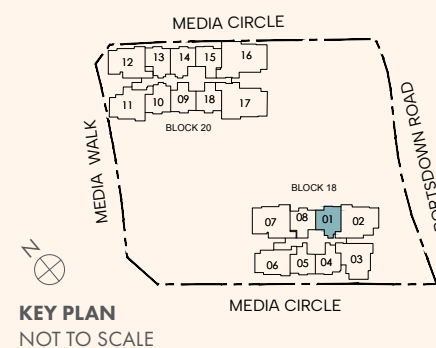
#02-01 to #14-01



#### LEGEND

**F** FRIDGE **W/D** WASHER CUM DRYER **DB** DISTRIBUTION BOARD **ST** STORE  
**AC** AIR-CONDITIONER **RC** REINFORCED CONCRETE

DISCLAIMER: Area includes balcony where applicable, and excludes among others, the Air-Conditioner (AC) ledge, airwell, Reinforced Concrete (RC) Ledge and Services Voids. Please refer to the key plan for orientation. All floor plans are approximate measurements only and are subject to government re-survey. Balconies are not to be enclosed except with a balcony screen which has been approved and complies with the Competent Authority's guidelines. The cost of screen and installation shall be borne by the purchaser. For an illustration of the approved balcony screen, please refer to Annex A of this brochure.



# 2 Bedroom Premium + Study

## TYPE B3

64 sqm (689 sqft)

### BLOCK 20

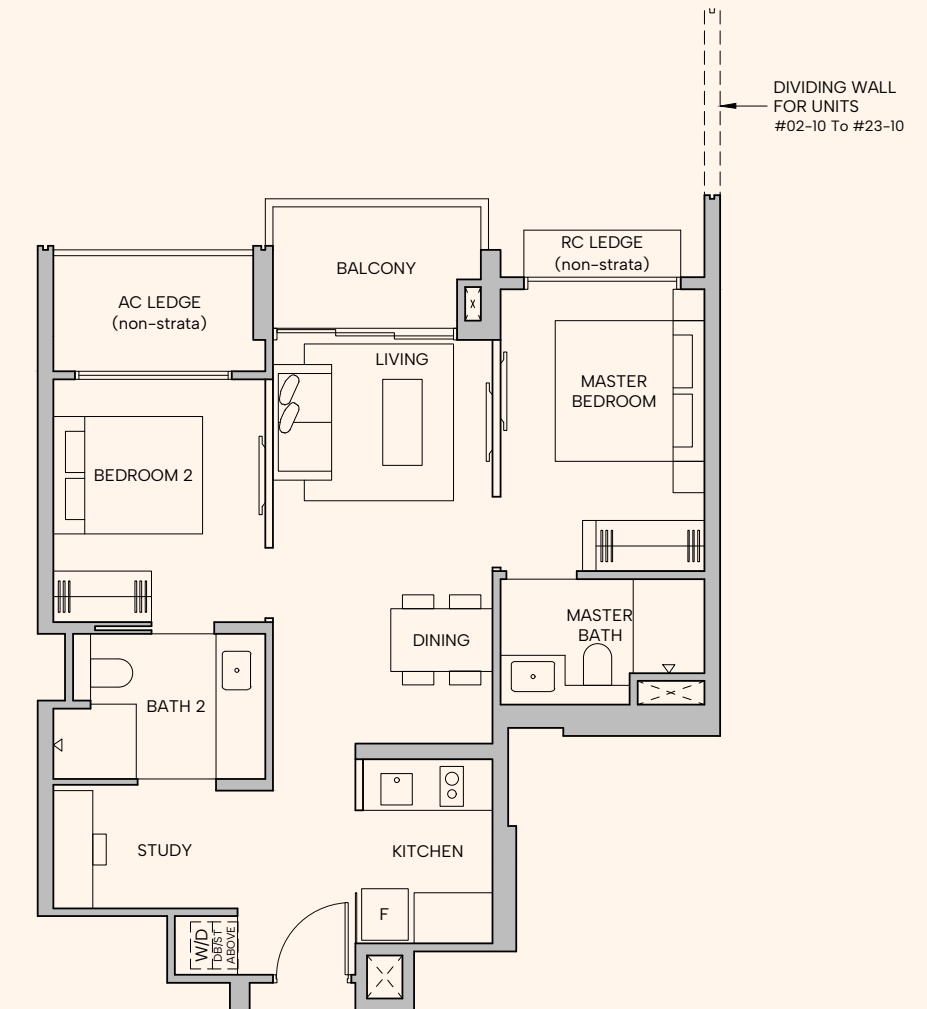
#02-10 to #23-10

#02-14 to #23-14

\* Mirrored Units

### BLOCK 20

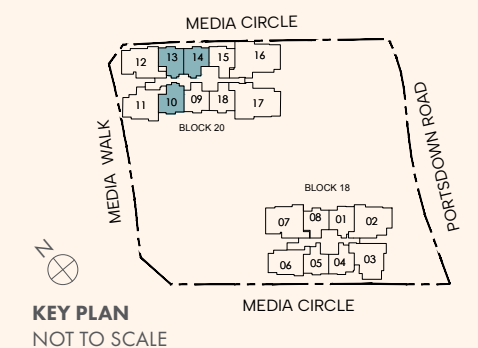
#02-13\* to #22-13\*



#### LEGEND

**F** FRIDGE **W/D** WASHER CUM DRYER **DB** DISTRIBUTION BOARD **ST** STORE  
**AC** AIR-CONDITIONER **RC** REINFORCED CONCRETE

DISCLAIMER: Area includes balcony where applicable, and excludes among others, the Air-Conditioner (AC) ledge, airwell, Reinforced Concrete (RC) Ledge and Services Voids. Please refer to the key plan for orientation. All floor plans are approximate measurements only and are subject to government re-survey. Balconies are not to be enclosed except with a balcony screen which has been approved and complies with the Competent Authority's guidelines. The cost of screen and installation shall be borne by the purchaser. For an illustration of the approved balcony screen, please refer to Annex A of this brochure.



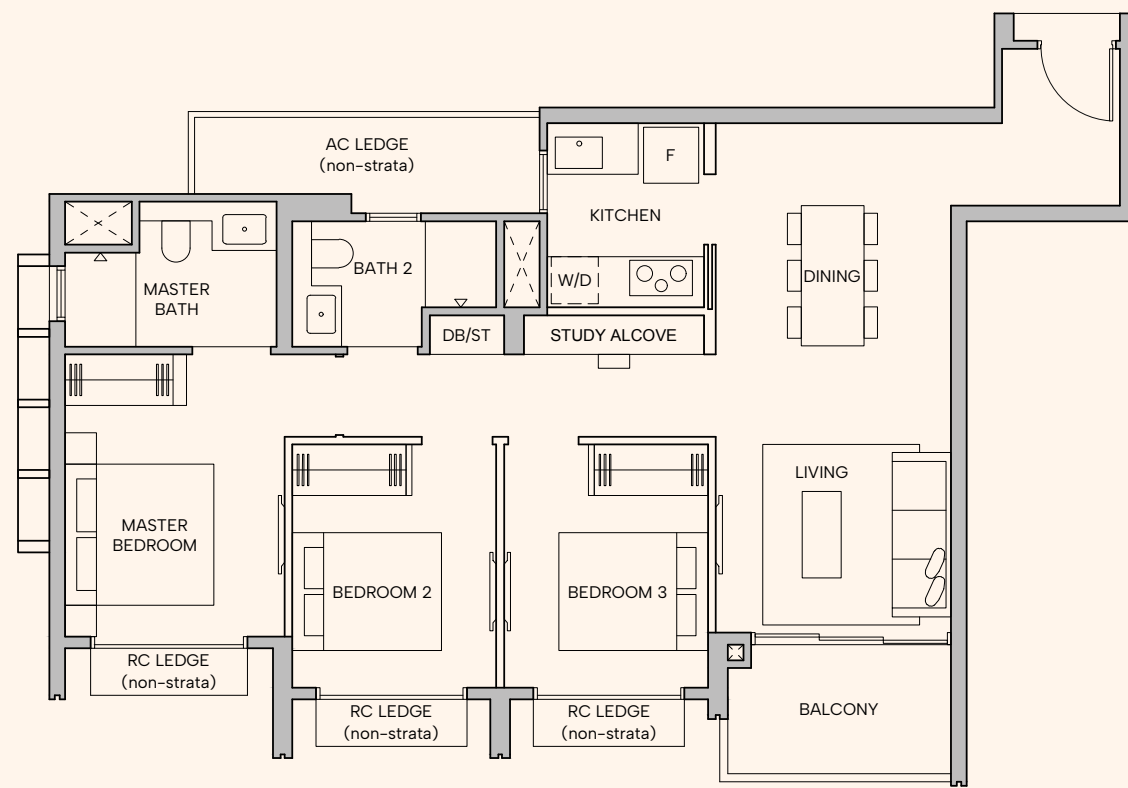
# 3 Bedroom Deluxe

## TYPE C1

83 sqm (893 sqft)

## BLOCK 18

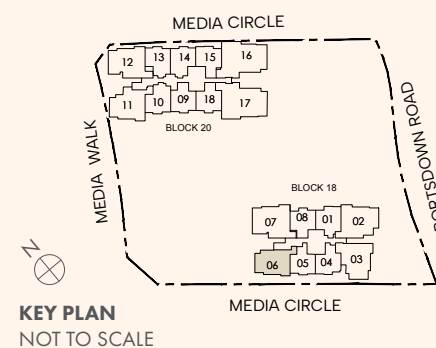
#02-06 to #15-06



### LEGEND

**F** FRIDGE **W/D** WASHER CUM DRYER **DB** DISTRIBUTION BOARD **ST** STORE  
**AC** AIR-CONDITIONER **RC** REINFORCED CONCRETE

DISCLAIMER: Area includes balcony where applicable, and excludes among others, the Air-Conditioner (AC) ledge, airwell, Reinforced Concrete (RC) Ledge and Services Voids. Please refer to the key plan for orientation. All floor plans are approximate measurements only and are subject to government re-survey. Balconies are not to be enclosed except with a balcony screen which has been approved and complies with the Competent Authority's guidelines. The cost of screen and installation shall be borne by the purchaser. For an illustration of the approved balcony screen, please refer to Annex A of this brochure.



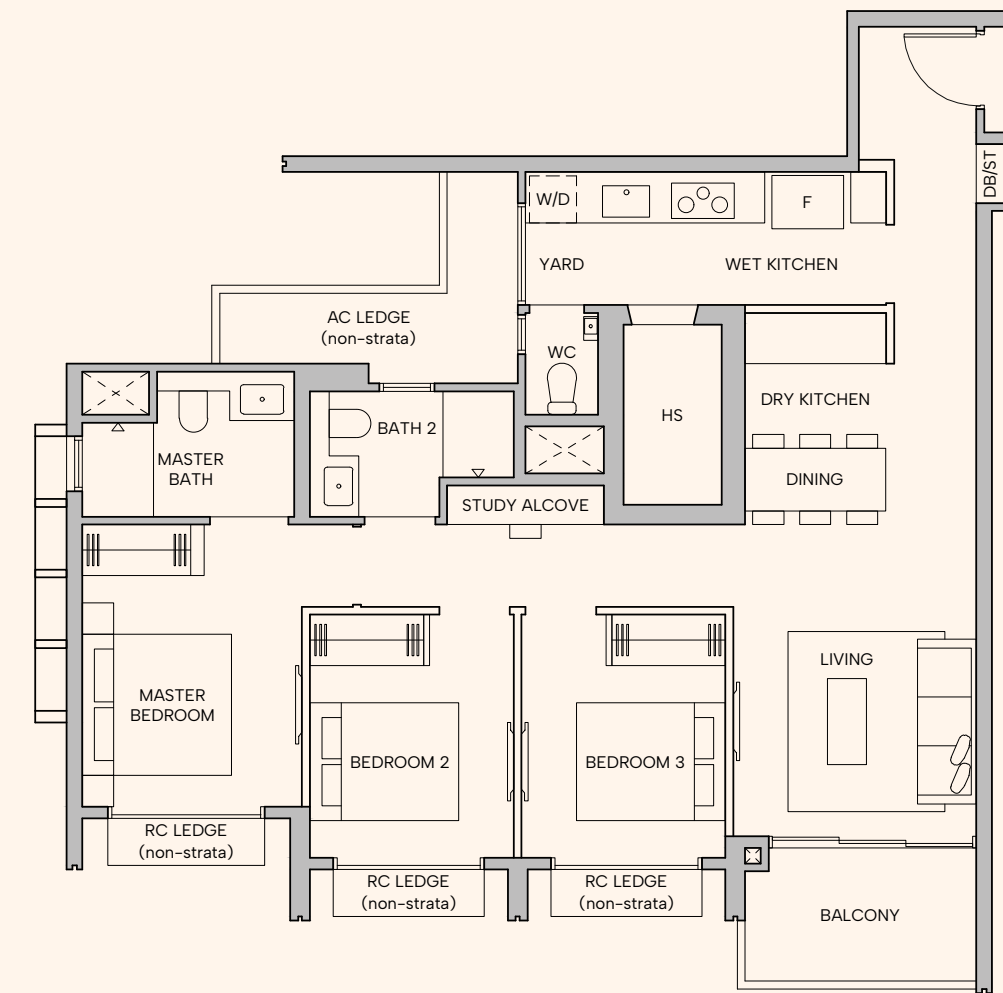
# 3 Bedroom Premium

## TYPE C2

94 sqm (1012 sqft)

## BLOCK 18

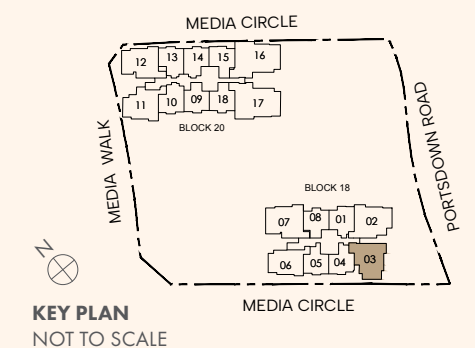
#02-03 to #15-03



### LEGEND

**F** FRIDGE **W/D** WASHER CUM DRYER **DB** DISTRIBUTION BOARD **ST** STORE **AC** AIR-CONDITIONER  
**RC** REINFORCED CONCRETE **HS** HOUSEHOLD SHELTER **WC** WATER CLOSET

DISCLAIMER: Area includes balcony where applicable, and excludes among others, the Air-Conditioner (AC) ledge, airwell, Reinforced Concrete (RC) Ledge and Services Voids. Please refer to the key plan for orientation. All floor plans are approximate measurements only and are subject to government re-survey. Balconies are not to be enclosed except with a balcony screen which has been approved and complies with the Competent Authority's guidelines. The cost of screen and installation shall be borne by the purchaser. For an illustration of the approved balcony screen, please refer to Annex A of this brochure.



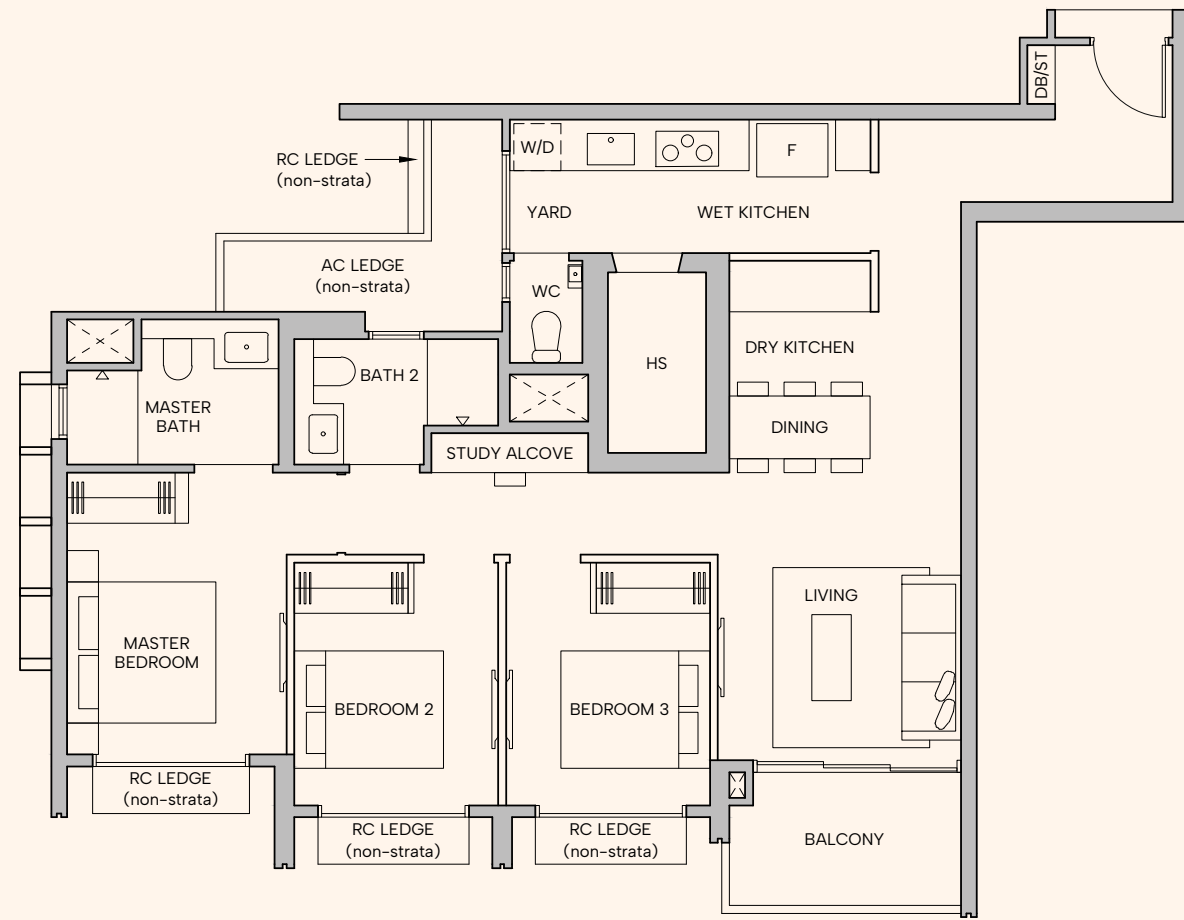
# 3 Bedroom Premium

## TYPE C3

95 sqm (1023 sqft)

### BLOCK 20

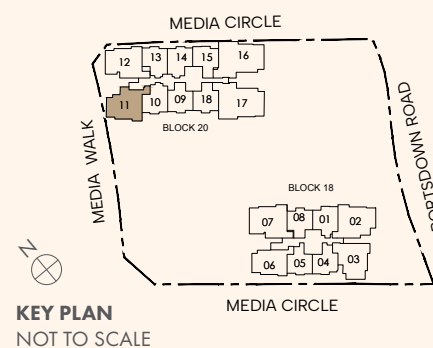
#02-11 to #23-11



### LEGEND

F FRIDGE W/D WASHER CUM DRYER DB DISTRIBUTION BOARD ST STORE AC AIR-CONDITIONER  
RC REINFORCED CONCRETE HS HOUSEHOLD SHELTER WC WATER CLOSET

DISCLAIMER: Area includes balcony where applicable, and excludes among others, the Air-Conditioner (AC) ledge, airwell, Reinforced Concrete (RC) Ledge and Services Voids. Please refer to the key plan for orientation. All floor plans are approximate measurements only and are subject to government re-survey. Balconies are not to be enclosed except with a balcony screen which has been approved and complies with the Competent Authority's guidelines. The cost of screen and installation shall be borne by the purchaser. For an illustration of the approved balcony screen, please refer to Annex A of this brochure.



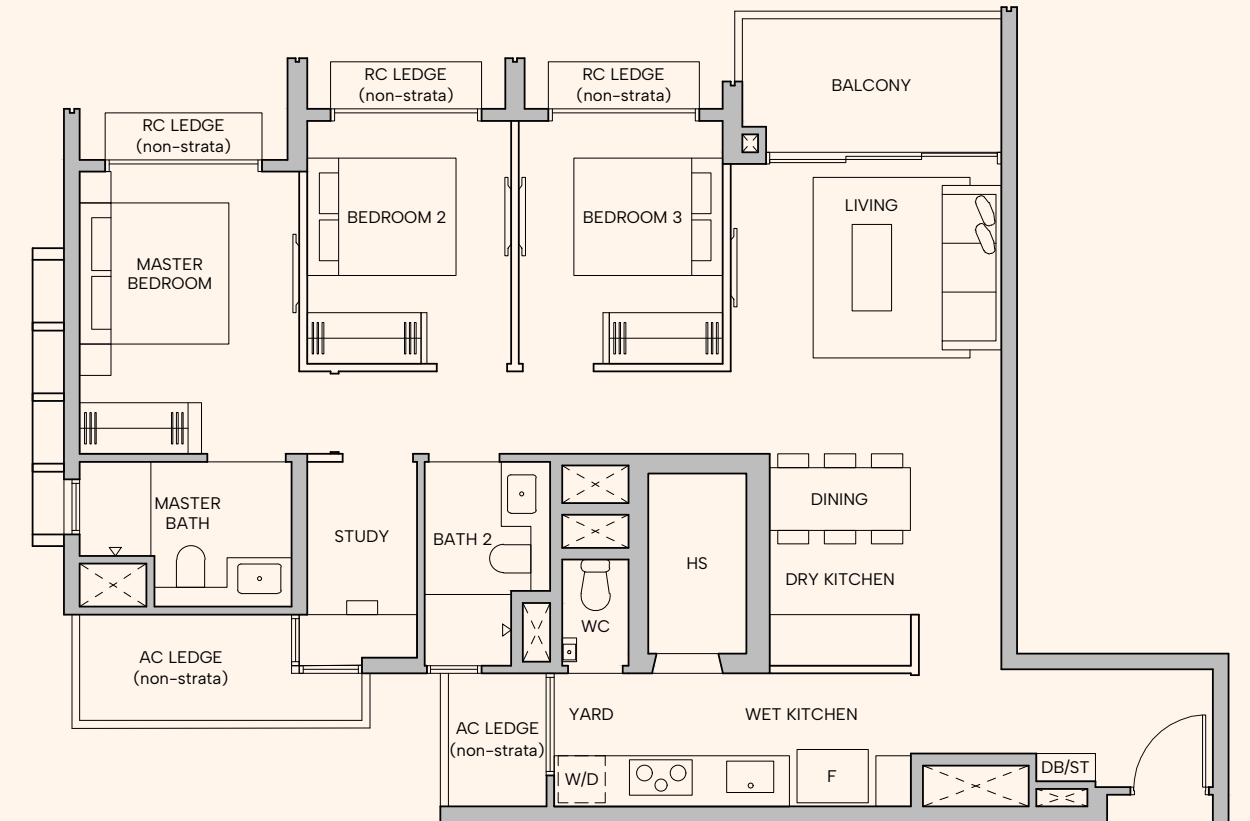
# 3 Bedroom Premium + Study

## TYPE C4

98 sqm (1055 sqft)

### BLOCK 20

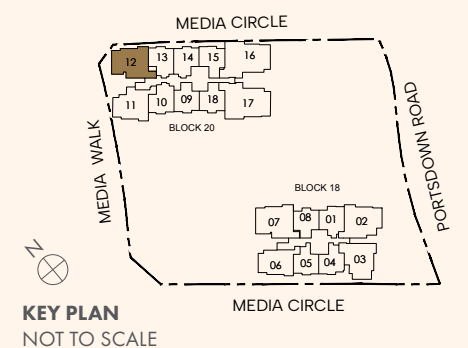
#02-12 to #22-12



### LEGEND

F FRIDGE W/D WASHER CUM DRYER DB DISTRIBUTION BOARD ST STORE AC AIR-CONDITIONER  
RC REINFORCED CONCRETE HS HOUSEHOLD SHELTER WC WATER CLOSET

DISCLAIMER: Area includes balcony where applicable, and excludes among others, the Air-Conditioner (AC) ledge, airwell, Reinforced Concrete (RC) Ledge and Services Voids. Please refer to the key plan for orientation. All floor plans are approximate measurements only and are subject to government re-survey. Balconies are not to be enclosed except with a balcony screen which has been approved and complies with the Competent Authority's guidelines. The cost of screen and installation shall be borne by the purchaser. For an illustration of the approved balcony screen, please refer to Annex A of this brochure.



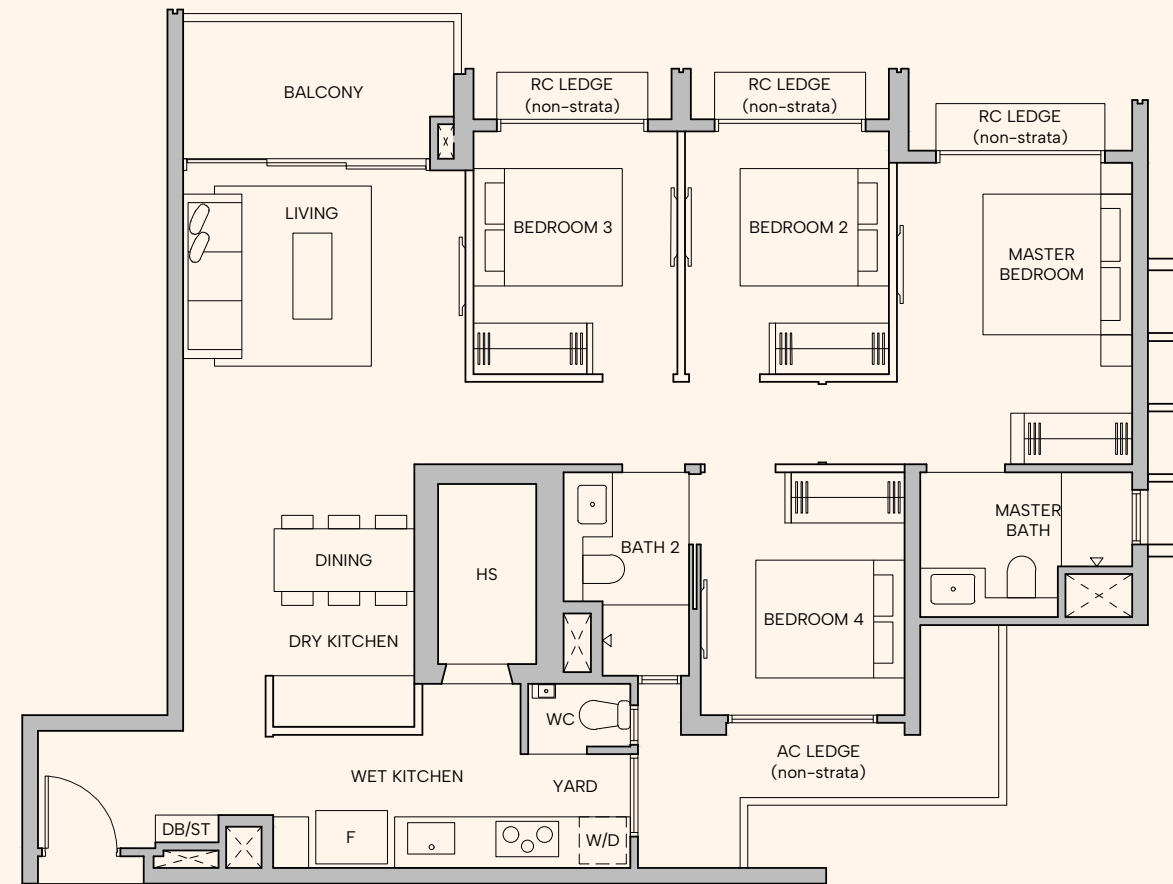
# 4 Bedroom Premium

## TYPE D1a

107 sqm (1152 sqft)

### BLOCK 18

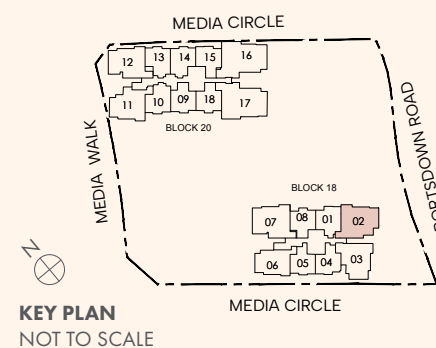
#02-02 to #14-02



#### LEGEND

F FRIDGE W/D WASHER CUM DRYER DB DISTRIBUTION BOARD ST STORE AC AIR-CONDITIONER  
RC REINFORCED CONCRETE HS HOUSEHOLD SHELTER WC WATER CLOSET

DISCLAIMER: Area includes balcony where applicable, and excludes among others, the Air-Conditioner (AC) ledge, airwell, Reinforced Concrete (RC) Ledge and Services Voids. Please refer to the key plan for orientation. All floor plans are approximate measurements only and are subject to government re-survey. Balconies are not to be enclosed except with a balcony screen which has been approved and complies with the Competent Authority's guidelines. The cost of screen and installation shall be borne by the purchaser. For an illustration of the approved balcony screen, please refer to Annex A of this brochure.



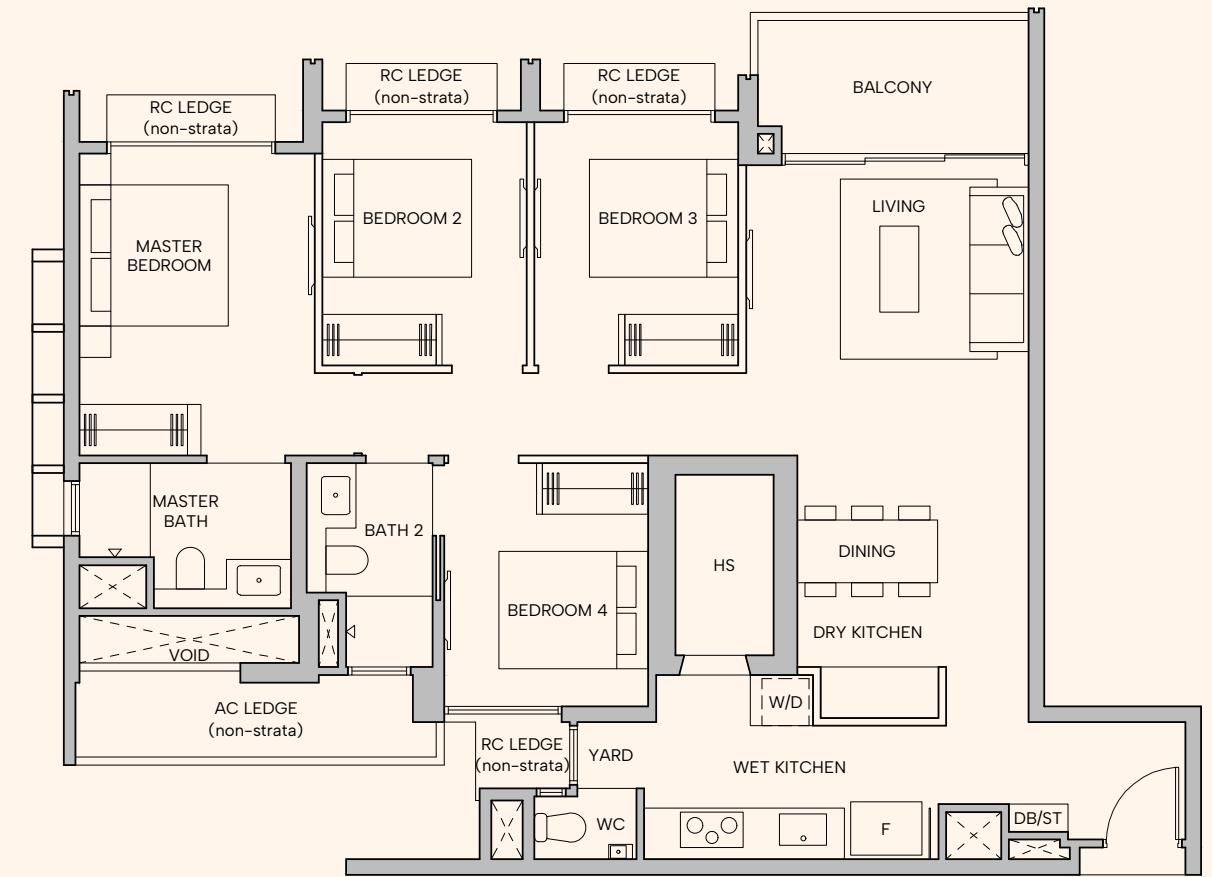
# 4 Bedroom Premium

## TYPE D1b

107 sqm (1152 sqft)

### BLOCK 18

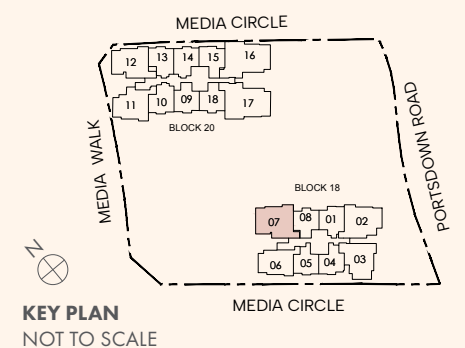
#02-07 to #14-07



#### LEGEND

F FRIDGE W/D WASHER CUM DRYER DB DISTRIBUTION BOARD ST STORE AC AIR-CONDITIONER  
RC REINFORCED CONCRETE HS HOUSEHOLD SHELTER WC WATER CLOSET

DISCLAIMER: Area includes balcony where applicable, and excludes among others, the Air-Conditioner (AC) ledge, airwell, Reinforced Concrete (RC) Ledge and Services Voids. Please refer to the key plan for orientation. All floor plans are approximate measurements only and are subject to government re-survey. Balconies are not to be enclosed except with a balcony screen which has been approved and complies with the Competent Authority's guidelines. The cost of screen and installation shall be borne by the purchaser. For an illustration of the approved balcony screen, please refer to Annex A of this brochure.



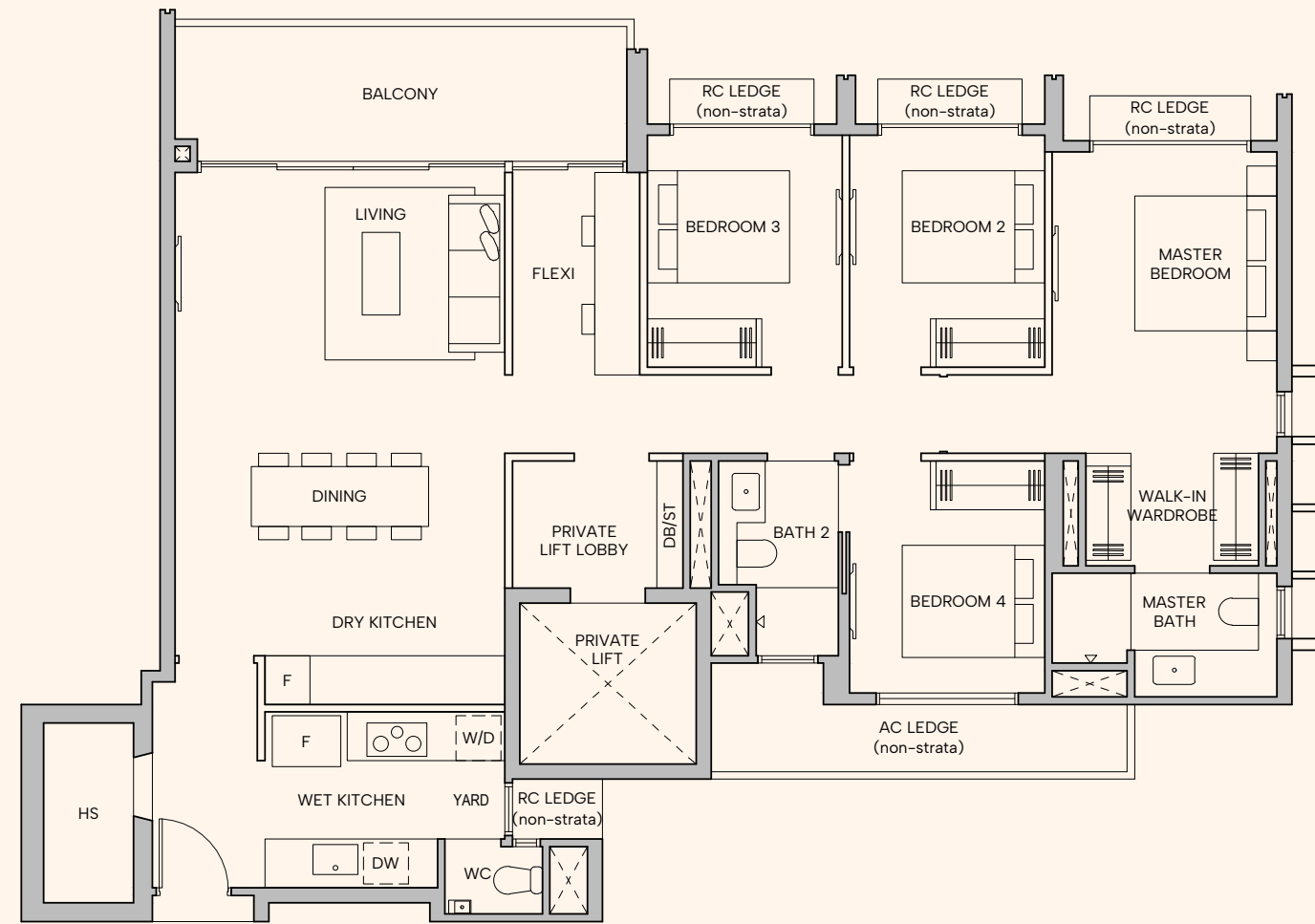
# 4 Bedroom Suite + Flexi

## TYPE D2a

133 sqm (1432 sqft)

### BLOCK 20

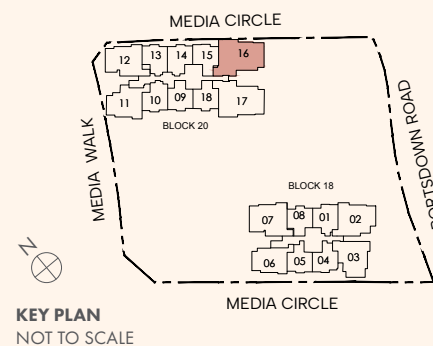
#02-16 to #22-16



#### LEGEND

F FRIDGE W/D WASHER CUM DRYER DB DISTRIBUTION BOARD ST STORE AC AIR-CONDITIONER  
 RC REINFORCED CONCRETE HS HOUSEHOLD SHELTER WC WATER CLOSET DW DISHWASHER

DISCLAIMER: Area includes balcony where applicable, and excludes among others, the Air-Conditioner (AC) ledge, airwell, Reinforced Concrete (RC) Ledge and Services Voids. Please refer to the key plan for orientation. All floor plans are approximate measurements only and are subject to government re-survey. Balconies are not to be enclosed except with a balcony screen which has been approved and complies with the Competent Authority's guidelines. The cost of screen and installation shall be borne by the purchaser. For an illustration of the approved balcony screen, please refer to Annex A of this brochure.



KEY PLAN  
NOT TO SCALE

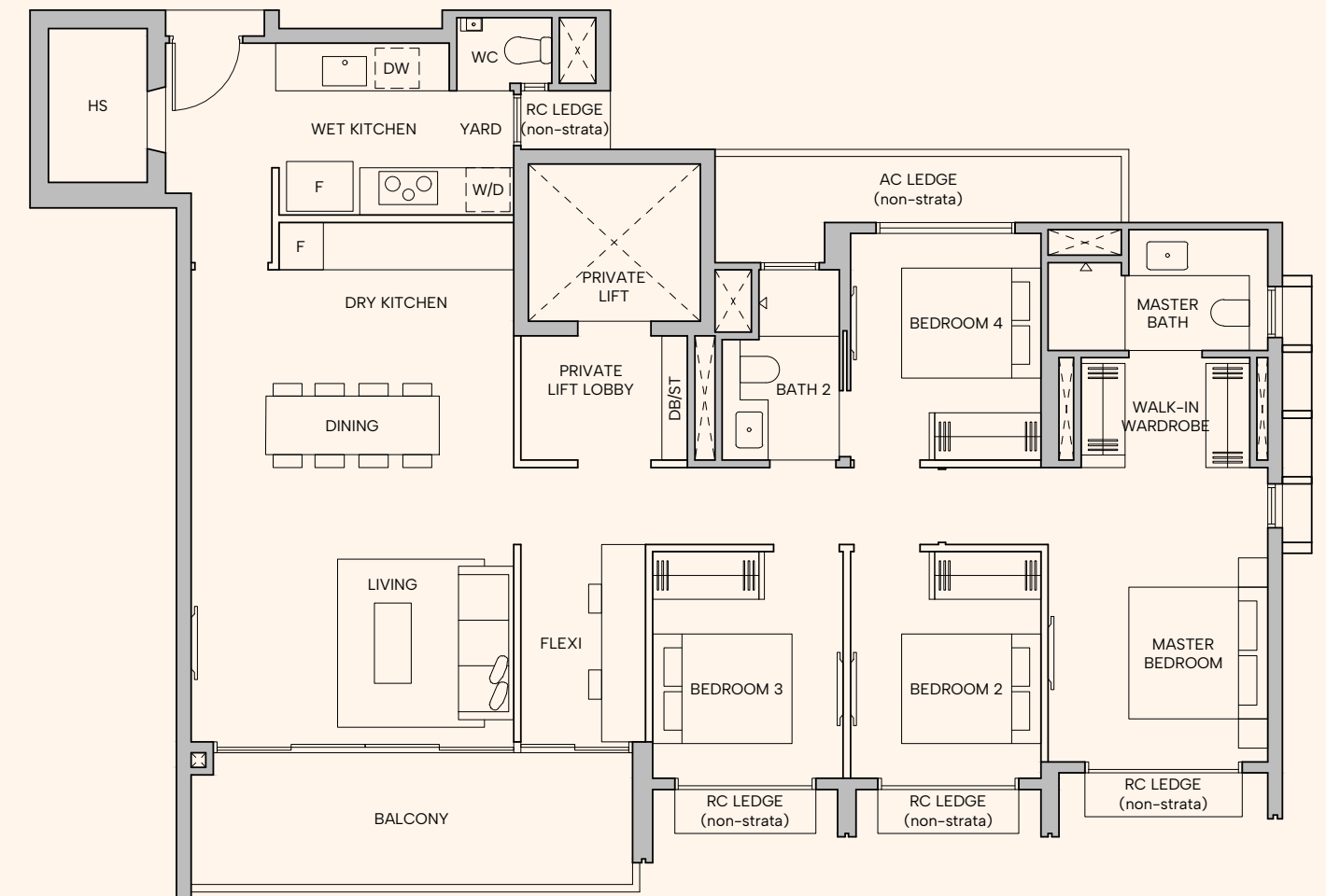
# 4 Bedroom Suite + Flexi

## TYPE D2b

133 sqm (1432 sqft)

### BLOCK 20

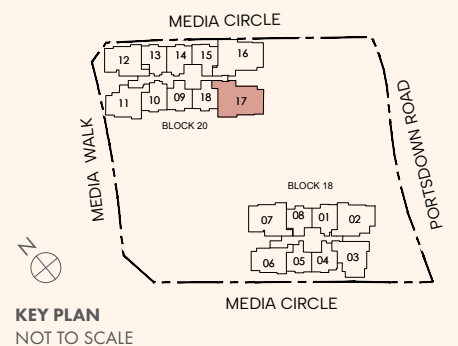
#02-17 to #22-17



#### LEGEND

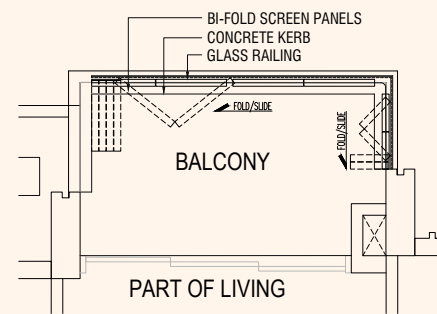
F FRIDGE W/D WASHER CUM DRYER DB DISTRIBUTION BOARD ST STORE AC AIR-CONDITIONER  
 RC REINFORCED CONCRETE HS HOUSEHOLD SHELTER WC WATER CLOSET DW DISHWASHER

DISCLAIMER: Area includes balcony where applicable, and excludes among others, the Air-Conditioner (AC) ledge, airwell, Reinforced Concrete (RC) Ledge and Services Voids. Please refer to the key plan for orientation. All floor plans are approximate measurements only and are subject to government re-survey. Balconies are not to be enclosed except with a balcony screen which has been approved and complies with the Competent Authority's guidelines. The cost of screen and installation shall be borne by the purchaser. For an illustration of the approved balcony screen, please refer to Annex A of this brochure.

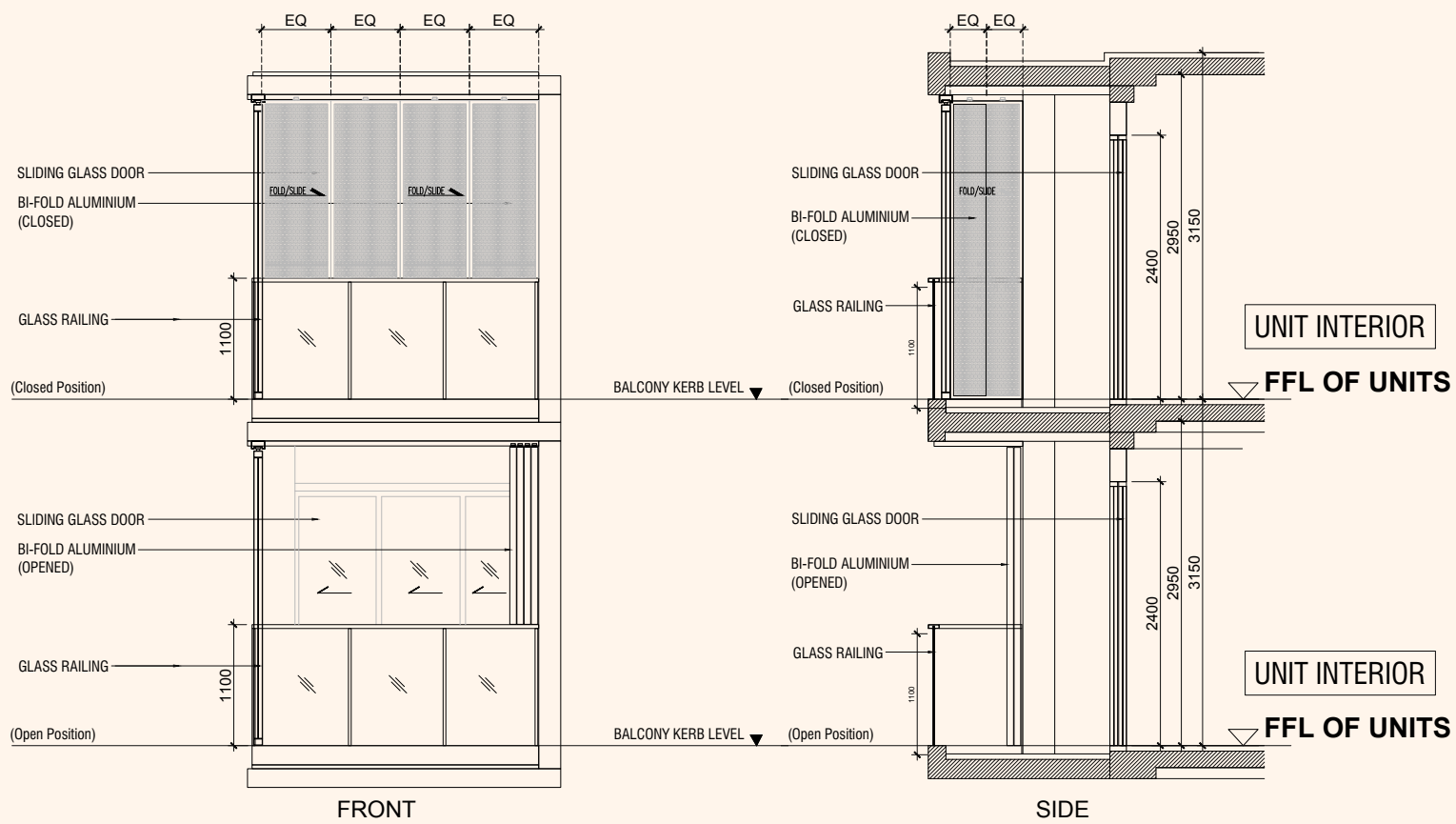


KEY PLAN  
NOT TO SCALE

# ANNEX A BALCONY SCREEN DETAILS



## TYPICAL UNIT PLAN



## ELEVATIONS

### Notes:

- Balcony(ies) (if any) in the unit is/are not to be enclosed, either partially or in full, except with the approved balcony screens.
- The proposed Balcony(ies) screen shall allow natural ventilation at all times including when the screens are fully closed and are capable of being fully retracted.
- The installation and cost of such screens shall be at the Purchaser's own cost and expense.
- Information is accurate at point of printing.

# A PARTNERSHIP OF DISTINCTION

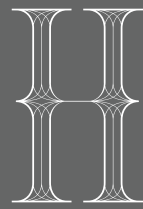


## QINGJIAN REALTY (SOUTH PACIFIC) GROUP PTE LTD

Qingjian Realty (South Pacific) Group Pte Ltd (Qingjian Realty) is the regional HQ of Qingjian Group's real estate development arm in Southeast Asia. We specialise in property development in the residential, commercial, and industrial sectors. Throughout the years, Qingjian Realty has constantly innovated to provide thoughtful, award-winning homes that complement the ever-changing lifestyles of today's homeowners. We paved the way for smart home living in Singapore, with the launch of The Visionaire – the city's first executive condominium with homes fully suited with cutting-edge smart technology. Our commitment to providing quality, contemporary homes as a reputed developer in Singapore has been widely recognised. Qingjian Realty has consistently received the BCI Asia Top Ten Award, various awards from Asia Property Awards, and the BCA Awards, amongst many others.

## FORSEA HOLDINGS PTE LTD

Forsea Holdings Pte Ltd is a subsidiary of a globally renowned Fortune 500 construction group, an infrastructure powerhouse in China, and is dedicated to innovative and high-quality real estate development. With years of building expertise, Forsea takes pride as the reliable partner in providing extensive solutions and end-products of exceptional quality. Forsea's commitment to quality is backed by the Company's large pool of resources, engineering expertise and proven experience. Based on strong client collaboration, effective communication, as well as supportive management, Forsea is devoted to delivering quality homes that transcend generations.



# Hudson Place

## RESIDENCES

Developer: Media Circle Alpha Development Pte. Ltd. • UEN: 202513909D • Developer license: C1545 • Encumbrances: Mortgage No. IK/70655N in favour of Bank of China Limited • Lot/Mukim no.: MK3 ON LOT 05805K at Media Circle • Tenure of Land: 99 years commencing from 10 June 2025 • Expected date of Vacant Possession: 30 Sep 2029 • Expected date of legal completion: 30 Sep 2032

While every reasonable care has been taken in preparing this brochure, specifications, constructing the sales models and sales gallery/showflat (the "Materials"), the Developer and its agents and their respective servants and contractors do not warrant the accuracy of any of the Materials and shall in no way be held responsible for any inaccuracies in their contents or between the Materials and the actual unit when built. The Developer shall not be bound by any statement, representation or promise (written or oral) by its agents and contractors.

All statements and depictions are believed to be correct but are not to be regarded as statements or representations of fact. The Sale and Purchase Agreement shall form the entire agreement between the Developer and the Purchaser and shall supersede all statements, representations or promises made prior to signing of the Sale and Purchase Agreement. All information, specifications, layout plans, building plans, location of facilities, finishes and appliance selection and visuals are subject to any changes as may be required and approved by the Architect, Developer and/or by the relevant authorities and may be changed without notice. The Materials are not intended to be contractual documents and shall not form part of any offer or contract. Visuals, renderings, illustrations, models, showflat displays and photography are artist's impressions only and none can be regarded as representation of fact. Floor areas are approximate measurements only and not to scale. It is subject to final survey. The property is subject to inspection by the relevant authorities to comply with current codes of practice. All information, specifications, renderings, visual representations and plans are current at the time of publication and are subject to change as may be required by us and/or the competent authorities, and shall not form part of any offer or contract nor constitute any warranty by us and shall not be regarded as statements of representations of fact. All plans are subject to amendments as direct and/or approved by the building authorities. The Sale and Purchase Agreement shall form the entire agreement between us as the Developer and the Purchaser, and shall supersede all statements, representations or promises made prior to the signing of the Sale and Purchase Agreement and shall in no way be modified by any statements, representations or promises made by us or the Marketing Agent(s).

