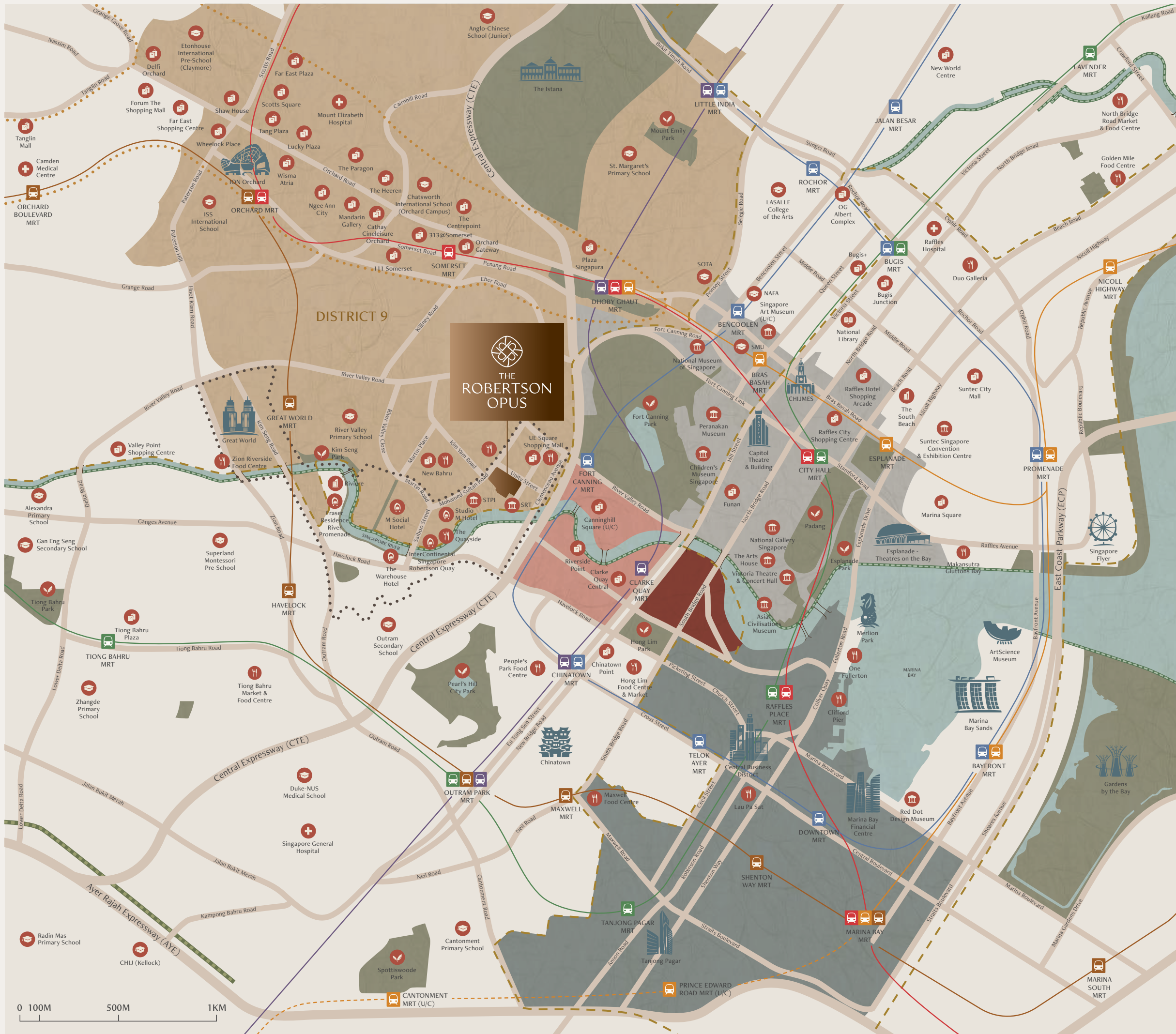




THE
ROBERTSON
OPUS



The Heart of District 9 Robertson Quay

Connectivity

Fort Canning MRT (within 350m)		5 mins
Clarke Quay MRT		4 mins
Great World MRT		12 mins
		4 mins
		3 mins

Shop & Dine

New Bahrū		1 min		4 mins
Clarke Quay		2 mins		6 mins
Great World		6 mins		4 mins
Boat Quay		7 mins		5 mins
Orchard Road				5 mins
CHIJMES				7 mins
Marina Bay Sands				9 mins

Nature

Fort Canning Park		5 mins
Pearl's Hill City Park		4 mins
Gardens by the Bay		10 mins

Arts & Culture

Singapore Repertory Theatre (SRT) - Direct Access		1 min		
STPI Creative Workshop & Gallery (STPI)		2 mins		
Victoria Theatre & Concert Hall		6 mins		6 mins
National Gallery Singapore		6 mins		7 mins
Chinatown				7 mins
Esplanade - Theatres on the Bay				9 mins

Business

Central Business District		7 mins
Marina Bay Financial Centre		7 mins
Suntec Singapore		9 mins
Tanjong Pagar		10 mins

Education

River Valley Primary School (within 1km)		9 mins		3 mins
Singapore Management University (SMU)		6 mins		6 mins
St. Margaret's School (within 2km)				6 mins
Anglo-Chinese School Junior (within 2km)				8 mins

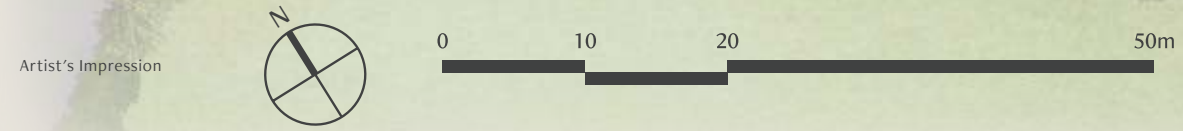
Area

	District 9		Clarke Quay		Civic District
	Robertson Quay		Boat Quay		Central Business District
	Orchard Belt		Core Central Region (CCR)		

Legend

	East-West Line		Downtown Line		North-South Line
	North-East Line		Circle Line		Thomson-East Coast Line

All distances and travel times are approximate, measured from The Robertson Opus to the respective destinations. Actual travel times may vary depending on the time of day. The map is for illustrative purposes only and is not drawn to scale.



SITE PLAN – 2ND STOREY

Here, the riverine landscape unfolds with a 45-metre lap pool and hydrotherapy jets, surrounded by gardens and pavilions. Fitness, relaxation, gastronomy and green amenities offer nature-inspired experiences catering to all ages.

Grand Arrival

- 1 Oasis Court (Basement 1)
- 2 Drop-off (1st Storey)
- 3 Arrival Plaza (1st Storey)
- 4 Robertson Mural (1st Storey)

Green Oasis

- 5 Gourmet Pavilion 1
- 6 Sanctuary Oasis
- 7 Chillout Deck

Family Commons

- 8 Gourmet Pavilion 2
- 9 Family Lawn
- 10 Children Sensory Garden
- 11 Relaxation Deck

Opus Club

- 12 Opus Bar & Dining
- 13 Opus Social Lounge
- 14 Robertson Reading Room

- 15 Robertson Kids' Club
- 16 Male Steam Room
- 17 Female Steam Room
- 18 Opus Gym
- 19 Serenity Garden
- 20 Nature Walk
- 21 Garden Pod

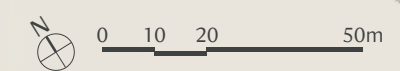
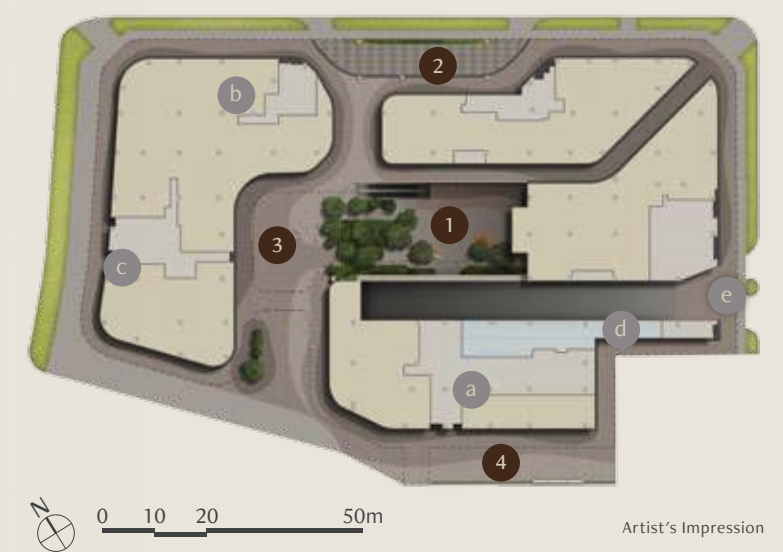
Wellness Sanctuary

- 22 Poolside Lounge
- 23 45m Lap Pool
- 24 Wellness Pool
- 25 Sun Deck
- 26 Social Deck
- 27 Reading Deck
- 28 Serenity Trail

Ancillary

- a Guardhouse (Basement 1)
- b Bin Centre (Basement 1)
- c Electrical Substation (Basement 1)
- d Bicycle Parking (1st Storey)
- e Entrance to Basement Carpark (1st Storey)
- f Management Office (2nd Storey)

1ST STOREY

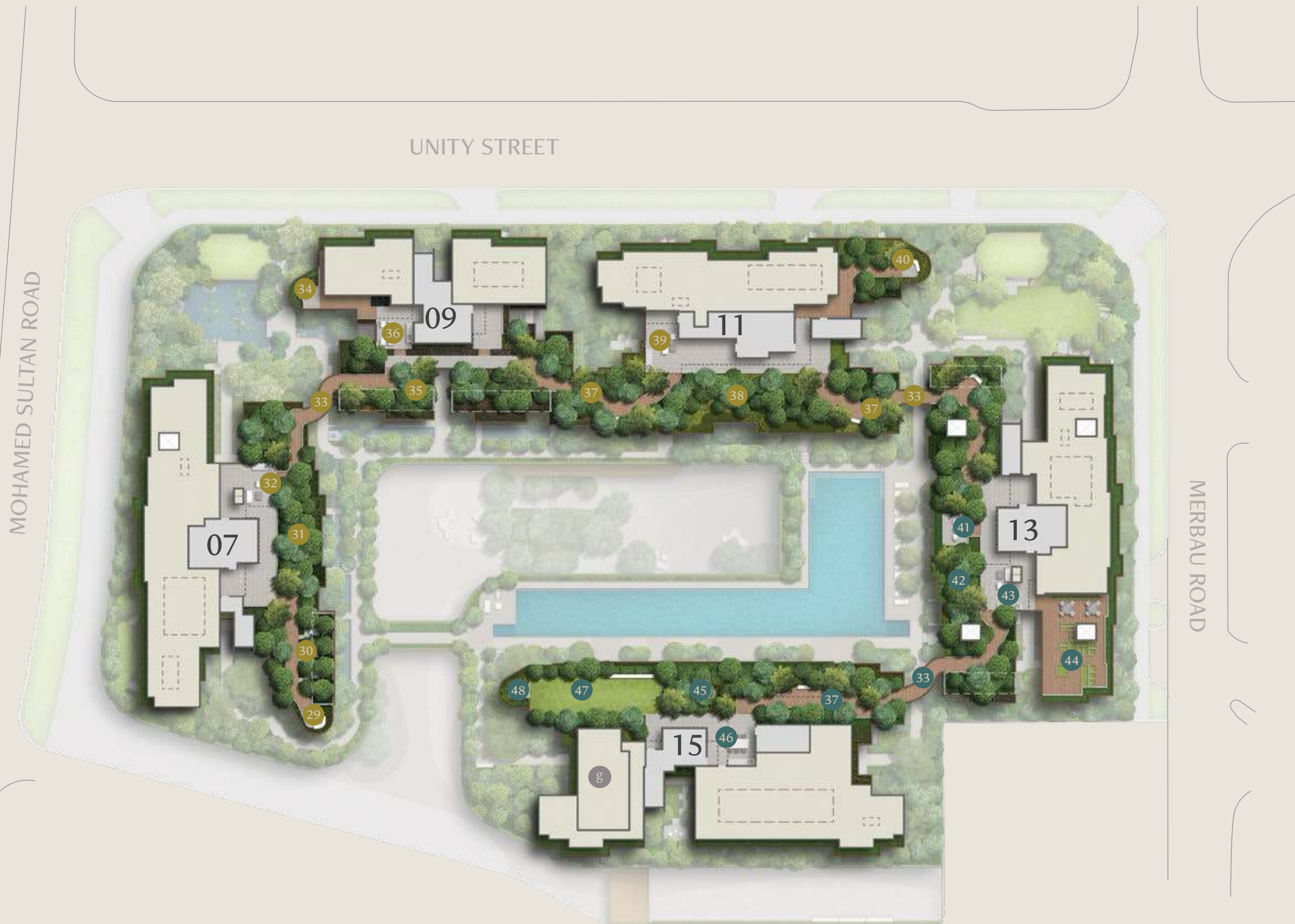


Artist's Impression

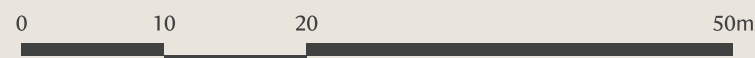
2ND STOREY 13 UNITY STREET



Artist's Impression



Artist's Impression



SITE PLAN - ROOF GARDEN

On the top floor, four cantilevered rooftop terraces form a sky forest, complete with nature nooks, wellness lawns, and a community garden. This elevated oasis offers a treasured sense of tranquillity and connection — a space for mindfulness, kindness and biophilic living.

Sky Gardens

- 29 Quay Vista
- 30 Art Nook
- 31 Emerald Garden
- 32 Social Pavilion 1
- 33 Skywalk Bridge
- 34 Urban Vista
- 35 Lilac Garden
- 36 Social Pavilion 2

- 37 Forest Walk
- 38 Amber Garden
- 39 Social Pavilion 3
- 40 City Vista

Sky Wellness

- 41 Vantage Deck
- 42 Meadow Garden
- 43 Social Pavilion 4
- 44 Community Garden
- 45 Ginger Garden
- 46 Social Pavilion 5
- 47 Wellness Lawn
- 48 River Vista

Ancillary

- g Generator Set
- Water Tank

Unit Distribution

7 Unity Street, Singapore 239591

Unit/ Floor	1	2	3	4	5	6	7	8
Roof	Roof Garden							
10	B7-S	C5-S	C3-S	B2	B2	C6	B3	B7-S
9	B7-S	C5-S	C3-S	B2	B2	C6	B3	B7-S
8	B7-S	C5-S	C3-S	B2	B2	C6	B3	B7-S
7	B7-S	C5-S	C3-S	B2	B2	C6	B3	B7-S
6	B7-S	C5-S	C3-S	B2	B2	C6	B3	B7-S
5	B7-S	C5-S	C3-S	B2	B2	C6	B3	B7-S
4	B7-S	C5-S	C3-S	B2	B2	C6	B3	B7-S
3	B7-S	C5-S	C3-S	B2	B2	C6	B3	B7-S
2	B7-S (P)	C5-S (P)	C3-S (P)	B2 (P)	B2 (P)	C6 (P)	B3 (P)	B7-S (P)
1	Commercial							
Basement 1	Commercial/Commercial Carpark							
Basement 2	Residential Carpark							
Basement 3	Residential Carpark							

9 Unity Street, Singapore 239592

Unit/ Floor	9	10	11	12
Roof	Roof Garden			
10	D1-P	C2-P	C1-P	C1-P
9	D1-P	C2-P	C1-P	C1-P
8	D1-P	C2-P	C1-P	C1-P
7	D1-P	C2-P	C1-P	C1-P
6	D1-P	C2-P	C1-P	C1-P
5	D1-P	C2-P	C1-P	C1-P
4	D1-P	C2-P	C1-P	C1-P
3	D1-P	C2-P	C1-P	C1-P
2	D1-P (P)	C2-P (P)	C1-P (P)	C1-P (P)
1	Commercial			
Basement 1	Commercial/Commercial Carpark			
Basement 2	Residential Carpark			
Basement 3	Residential Carpark			

11 Unity Street, Singapore 237995

Unit/ Floor	13	14	15	16	17	18	19	20
Roof	Roof Garden							
10	B5	C4-S	C2-S	B4	B4	C1-S	B6	B5
9	B5	C4-S	C2-S	B4	B4	C1-S	B6	B5
8	B5	C4-S	C2-S	B4	B4	C1-S	B6	B5
7	B5	C4-S	C2-S	B4	B4	C1-S	B6	B5
6	B5	C4-S	C2-S	B4	B4	C1-S	B6	B5
5	B5	C4-S	C2-S	B4	B4	C1-S	B6	B5
4	B5	C4-S	C2-S	B4	B4	C1-S	B6	B5
3	B5	C4-S	C2-S	B4	B4	C1-S	B6	B5
2	B5 (P)	C4-S (P)	C2-S (P)	B4 (P)	B4 (P)	C1-S (P)	B6 (P)	B5 (P)
1	Commercial							
Basement 1	Commercial/Commercial Carpark							
Basement 2	Residential Carpark							
Basement 3	Residential Carpark							

13 Unity Street, Singapore 239593

Unit/ Floor	21	22	23	24	25	26	27	28
Roof	Roof Garden							
10	B7-S	C7	C6	B2	B2	C6	C6	B7-S
9	B7-S	C7	C6	B2	B2	C6	C6	B7-S
8	B7-S	C7	C6	B2	B2	C6	C6	B7-S
7	B7-S	C7	C6	B2	B2	C6	C6	B7-S
6	B7-S	C7	C6	B2	B2	C6	C6	B7-S
5	B7-S	C7	C6	B2	B2	C6	C6	B7-S
4	B7-S	C7	C6	B2	B2	C6	C6	B7-S
3	Opus Lounge/Opus Gym							
2	Opus Lounge/Opus Gym							
1	Commercial							
Basement 1	Commercial/Commercial Carpark							
Basement 2	Residential Carpark							
Basement 3	Residential Carpark							

15 Unity Street, Singapore 239594

Unit/ Floor	29	30	31	32	33	34	35	36	37	38	39	40	41	42
Roof	Roof Garden													
9	A1	A1	A1	B1	B1	S1a	S1	S1	S1	S1	B1	B1	A1	A1
8	A1	A1	A1	B1	B1	S1a	S1	S1	S1	S1	B1	B1	A1	A1
7	A1	A1	A1	B1	B1	S1a	S1	S1	S1	S1	B1	B1	A1	A1
6	A1	A1	A1	B1	B1	S1a	S1	S1	S1	S1	B1	B1	A1	A1
5	A1	A1	A1	B1	B1	S1a	S1	S1	S1	S1	B1	B1	A1	A1
4	A1	A1	A1	B1	B1	S1a	S1	S1	S1	S1	B1	B1	A1	A1
3	A1	A1	A1	B1	B1	S1a	S1	S1	S1	S1	B1	B1	A1	A1
2	A1 (P)	A1 (P)	A1 (P)	B1 (P)	B1 (P)	S1a (P)	S1 (P)	S1 (P)	S1 (P)	S1 (P)	B1 (P)	B1 (P)	A1 (P)	A1 (P)
1	Commercial													
Basement 1	Commercial/Commercial Carpark													
Basement 2	Residential Carpark													
Basement 3	Residential Carpark													

Legend

- Suite
- 2 Bedroom
- 2 Bedroom + Study
- 3 Bedroom + Flexi
- 3 Bedroom Duoflex
- 3 Bedroom Premium
- 4 Bedroom Premium



Premier Collection

SUITE, 1 BEDROOM & 2 BEDROOM

Crafted for the savvy urbanite, the Premier Collection's Suite, 1 Bedroom and 2 Bedroom units feature high ceilings that elevate everyday living. Smooth expanses of tiling, layered in muted pastel white tones, flow naturally through the living, dining, and kitchen spaces. Every unit includes a built-in home organiser — a thoughtful detail that blends form with function. Bright, contemporary, and intuitively designed, these homes offer timeless comfort and style.

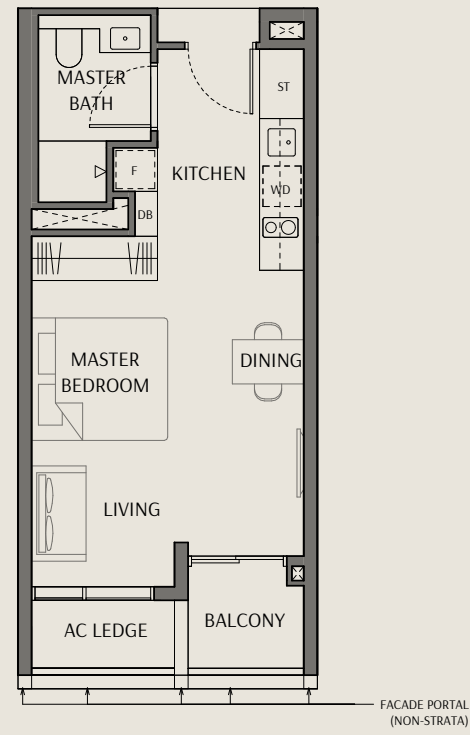
1 Bedroom Show Unit
For Illustration Purposes Only

Suite

Type S1

Area: 40 sqm | 431 sqft

- Unit(s): #03-35 to #09-35
 #03-36 to #09-36
 #03-37 to #09-37
 #03-38* to #09-38*

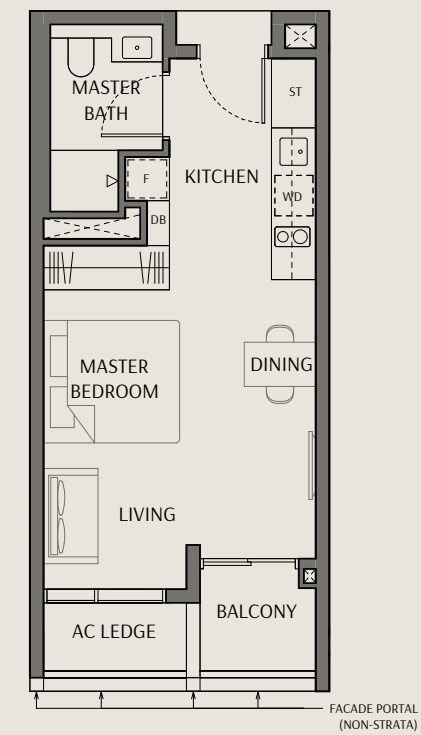


Suite

Type S1a

Area: 40 sqm | 431 sqft

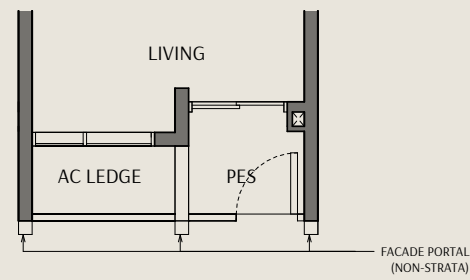
- Unit(s): #03-34 to #09-34



Type S1 (P)

Area: 40 sqm | 431 sqft

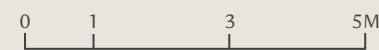
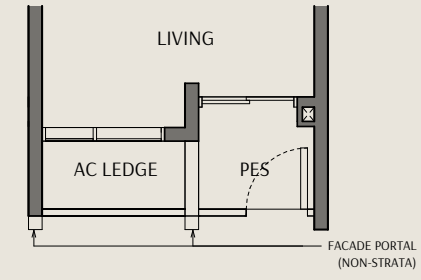
- Unit(s): #02-35
 #02-36
 #02-37
 #02-38*



Type S1a (P)

Area: 40 sqm | 431 sqft

- Unit(s): #02-34

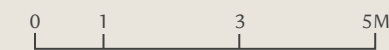


Legend:

- | | | | |
|----|--------------------|----|--|
| WD | Washer Cum Dryer | ST | Storage |
| F | Refrigerator | >< | Void Space (excluded from strata area) |
| DB | Distribution Board | ■ | Wall not allowed to be hacked or altered |

*Mirrored Unit

Area includes air conditioner (AC) ledge, balcony, PES and strata void where applicable. RC ledge do not form part of the unit strata area. The above plans are subject to change as may be approved by the relevant authorities. All floor plans are approximate measurements only and are subject to government re-survey. These are for the purpose of visual presentation only. The balcony and PES shall not be enclosed unless with the approved balcony screen. The installation and cost of the screen shall be borne by the purchaser.



Legend:

- | | | | |
|----|--------------------|----|--|
| WD | Washer Cum Dryer | ST | Storage |
| F | Refrigerator | >< | Void Space (excluded from strata area) |
| DB | Distribution Board | ■ | Wall not allowed to be hacked or altered |

Area includes air conditioner (AC) ledge, balcony, PES and strata void where applicable. RC ledge do not form part of the unit strata area. The above plans are approximate measurements only and are subject to government re-survey. These are for the purpose of visual presentation only. The balcony and PES shall not be enclosed unless with the approved balcony screen. The installation and cost of the screen shall be borne by the purchaser.



1 Bedroom

Type A1

Area: 46 sqm | 495 sqft

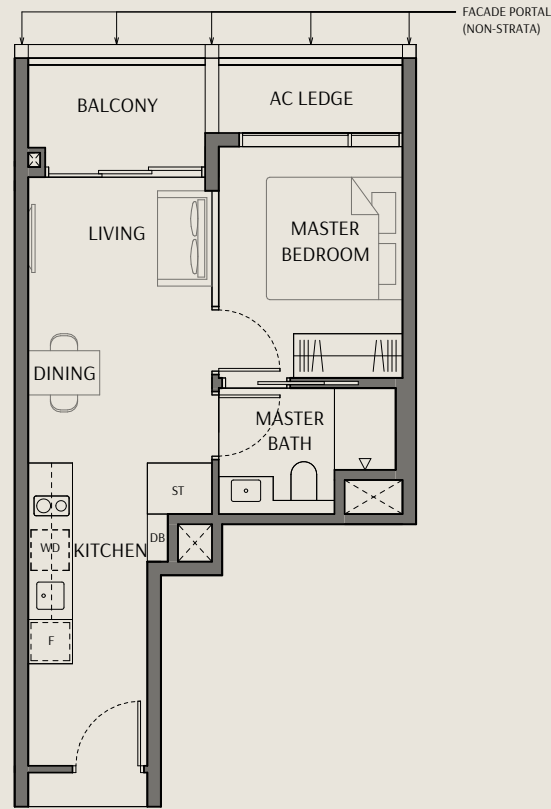
Unit(s): #03-29* to #09-29*

#03-30 to #09-30

#03-31* to #09-31*

#03-41 to #09-41

#03-42 to #09-42



Type A1 (P)

Area: 46 sqm | 495 sqft

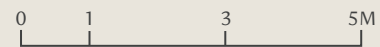
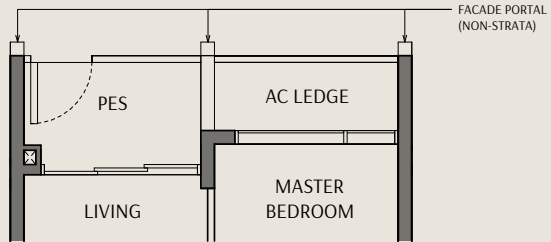
Unit(s): #02-29*

#02-30

#02-31*

#02-41

#02-42



Legend:

WD	Washer Cum Dryer	ST	Storage
F	Refrigerator		Void Space (excluded from strata area)
DB	Distribution Board		Wall not allowed to be hacked or altered

*Mirrored Unit

Area includes air conditioner (AC) ledge, balcony, PES and strata void where applicable. RC ledge do not form part of the unit strata area. The above plans are subject to change as may be approved by the relevant authorities. All floor plans are approximate measurements only and are subject to government re-survey. These are for the purpose of visual presentation only. The balcony and PES shall not be enclosed unless with the approved balcony screen. The installation and cost of the screen shall be borne by the purchaser.



2 Bedroom

Type B1

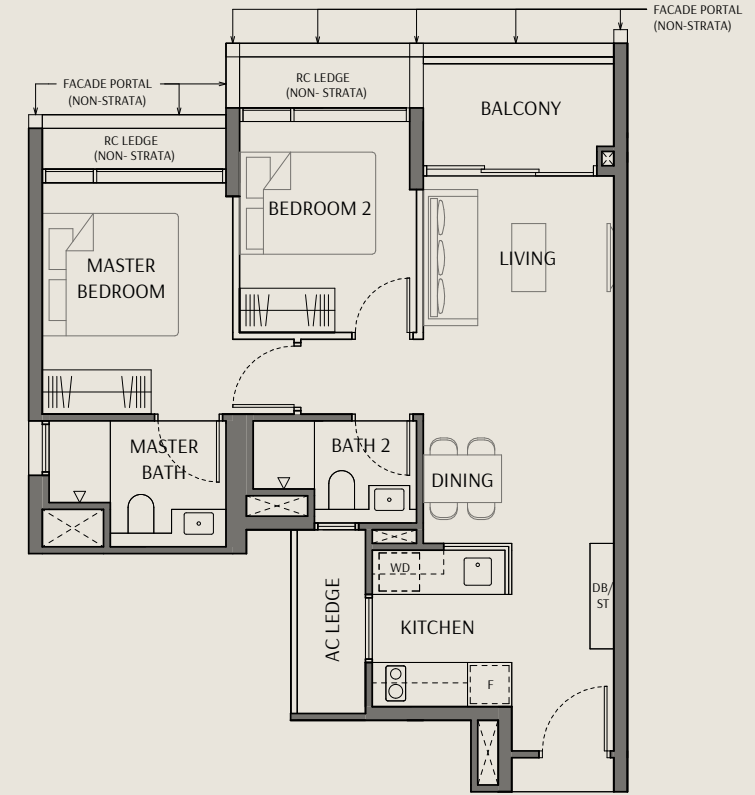
Area: 67 sqm | 721 sqft

Unit(s): #03-32* to #09-32*

#03-33 to #09-33

#03-39* to #09-39*

#03-40 to #09-40



Type B1 (P)

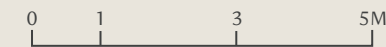
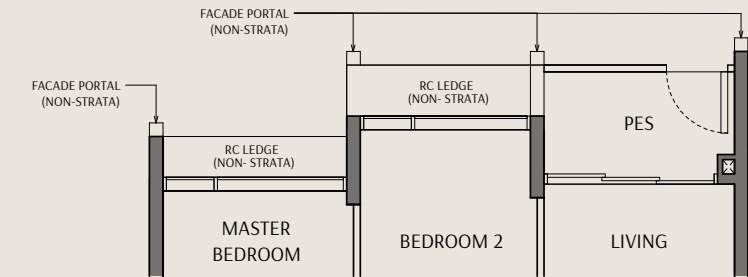
Area: 67 sqm | 721 sqft

Unit(s): #02-32*

#02-33

#02-39*

#02-40



Legend:

WD	Washer Cum Dryer	ST	Storage
F	Refrigerator		Void Space (excluded from strata area)
DB	Distribution Board		Wall not allowed to be hacked or altered

*Mirrored Unit

Area includes air conditioner (AC) ledge, balcony, PES and strata void where applicable. RC ledge do not form part of the unit strata area. The above plans are subject to change as may be approved by the relevant authorities. All floor plans are approximate measurements only and are subject to government re-survey. These are for the purpose of visual presentation only. The balcony and PES shall not be enclosed unless with the approved balcony screen. The installation and cost of the screen shall be borne by the purchaser.





Luxury Collection

2 BEDROOM, 2 BEDROOM + STUDY,
3 BEDROOM + FLEXI & 3 BEDROOM DUOFLEX

Embrace comfort and elegance in the Luxury Collection's 2 Bedroom to 3 Bedroom residences designed with green living in mind. Generous ceiling heights enhance spatial flow, while earth-toned palettes, large-format stone-look tiles, warm laminates, and engineered wood flooring create a cosy yet refined interior. Selected 3 bedroom layouts feature a versatile flexi room that opens to the dining area — ideal for entertaining, working from home, or simply unwinding in style. Every detail is thoughtfully considered, blending function with enduring sophistication.

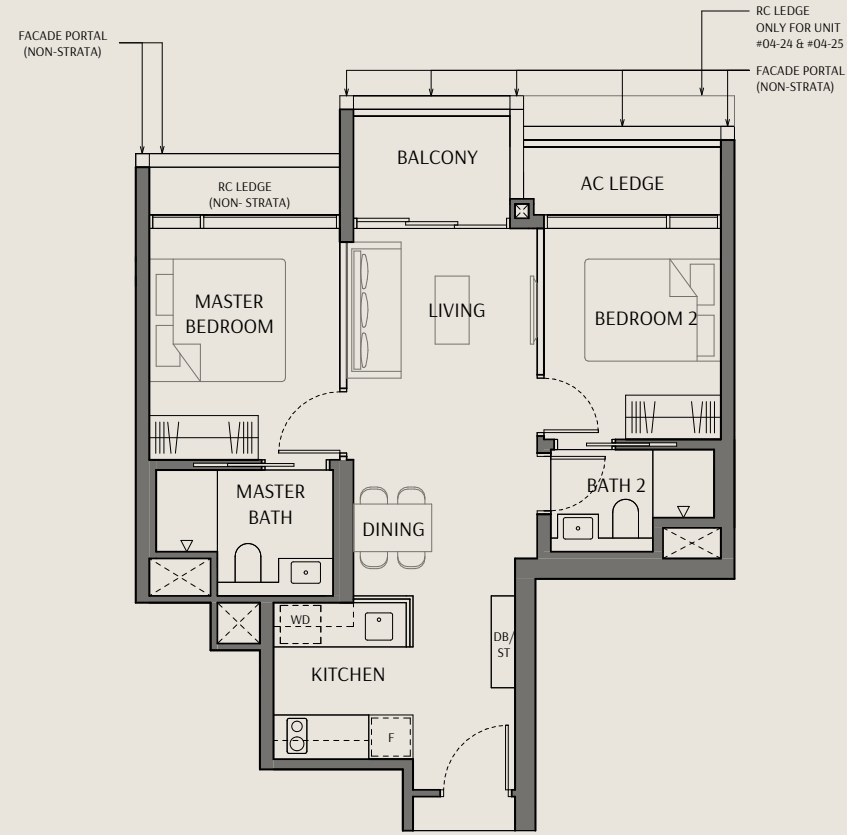
3 Bedroom Duoflex Show Unit
For Illustration Purposes Only

2 Bedroom

Type B2

Area: 64 sqm | 689 sqft

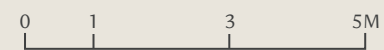
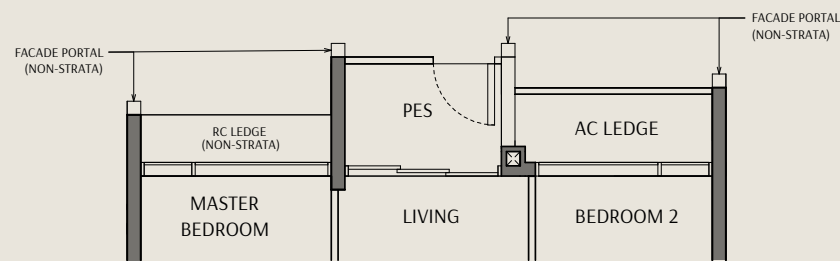
Unit(s): #03-04 to #10-04
 #03-05* to #10-05*
 #04-24 to #10-24
 #04-25* to #10-25*



Type B2 (P)

Area: 64 sqm | 689 sqft

Unit(s): #02-04
 #02-05*



Legend:

WD	Washer Cum Dryer	ST	Storage
F	Refrigerator	><	Void Space (excluded from strata area)
DB	Distribution Board	■	Wall not allowed to be hacked or altered

Area includes air conditioner (AC) ledge, balcony, PES and strata void where applicable. RC ledge do not form part of the unit strata area. The above plans are subject to change as may be approved by the relevant authorities. All floor plans are approximate measurements only and are subject to government re-survey. These are for the purpose of visual presentation only. The balcony and PES shall not be enclosed unless with the approved balcony screen. The installation and cost of the screen shall be borne by the purchaser.

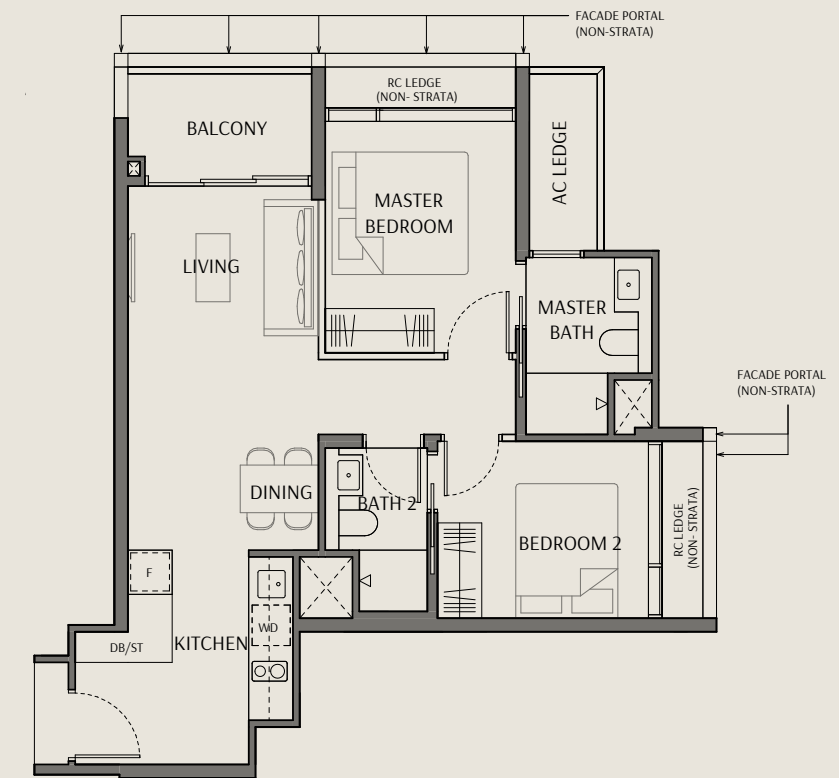


2 Bedroom

Type B3

Area: 66 sqm | 710 sqft

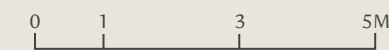
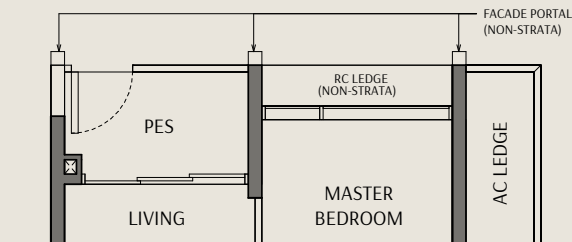
Unit(s): #03-07 to #10-07



Type B3 (P)

Area: 66 sqm | 710 sqft

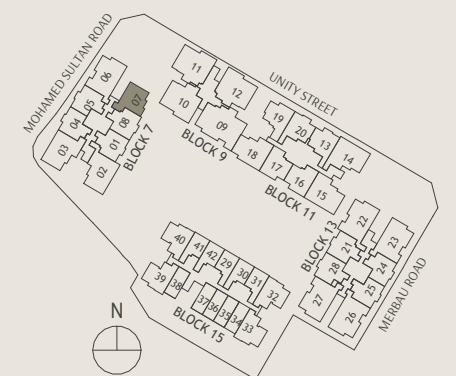
Unit(s): #02-07



Legend:

WD	Washer Cum Dryer	ST	Storage
F	Refrigerator	><	Void Space (excluded from strata area)
DB	Distribution Board	■	Wall not allowed to be hacked or altered

Area includes air conditioner (AC) ledge, balcony, PES and strata void where applicable. RC ledge do not form part of the unit strata area. The above plans are subject to change as may be approved by the relevant authorities. All floor plans are approximate measurements only and are subject to government re-survey. These are for the purpose of visual presentation only. The balcony and PES shall not be enclosed unless with the approved balcony screen. The installation and cost of the screen shall be borne by the purchaser.



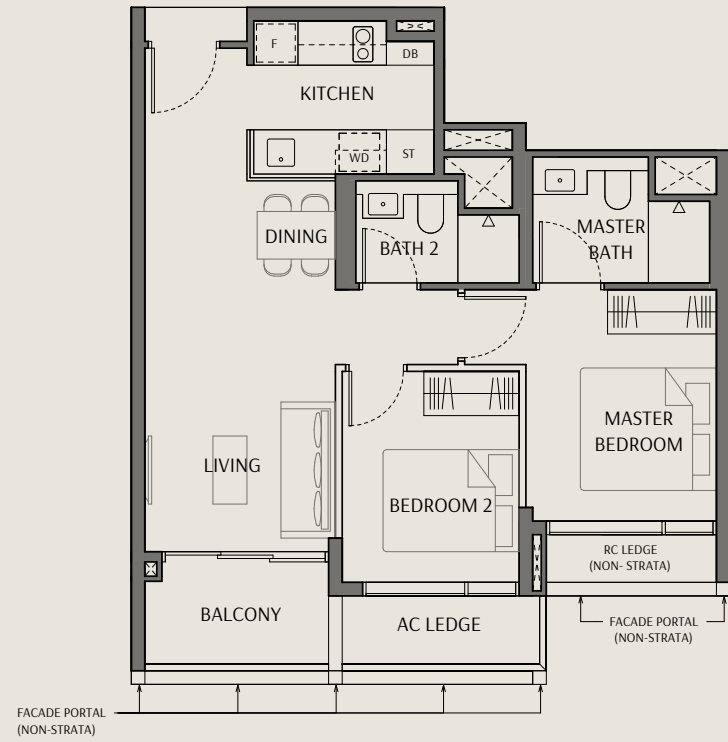
2 Bedroom

Type B4

Area: 67 sqm | 721 sqft

Unit(s): #03-16* to #10-16*

#03-17 to #10-17

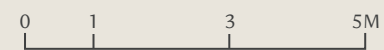
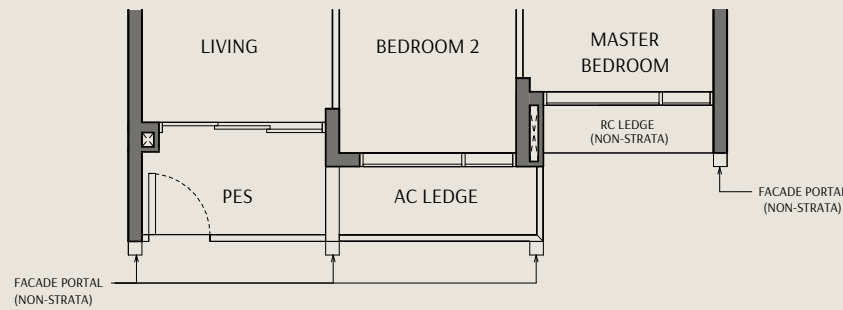


Type B4 (P)

Area: 67 sqm | 721 sqft

Unit(s): #02-16*

#02-17



Legend:

WD	Washer Cum Dryer	ST	Storage
F	Refrigerator	><	Void Space (excluded from strata area)
DB	Distribution Board	■	Wall not allowed to be hacked or altered

*Mirrored Unit

Area includes air conditioner (AC) ledge, balcony, PES and strata void where applicable. RC ledge do not form part of the unit strata area. The above plans are subject to change as may be approved by the relevant authorities. All floor plans are approximate measurements only and are subject to government re-survey. These are for the purpose of visual presentation only. The balcony and PES shall not be enclosed unless with the approved balcony screen. The installation and cost of the screen shall be borne by the purchaser.



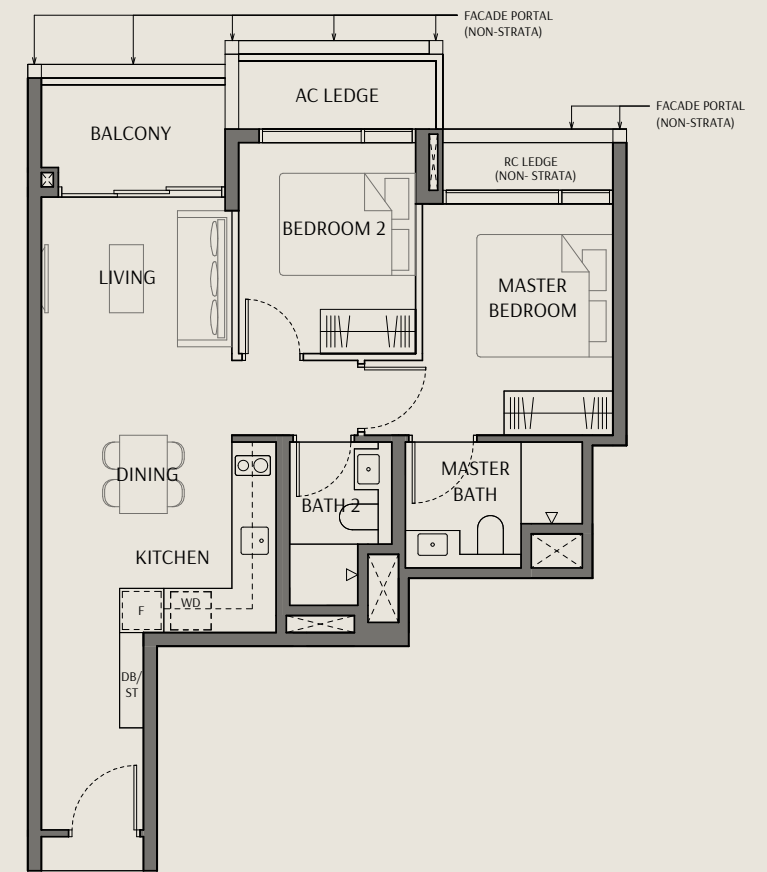
2 Bedroom

Type B5

Area: 67 sqm | 721 sqft

Unit(s): #03-13* to #10-13*

#03-20 to #10-20

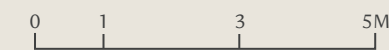
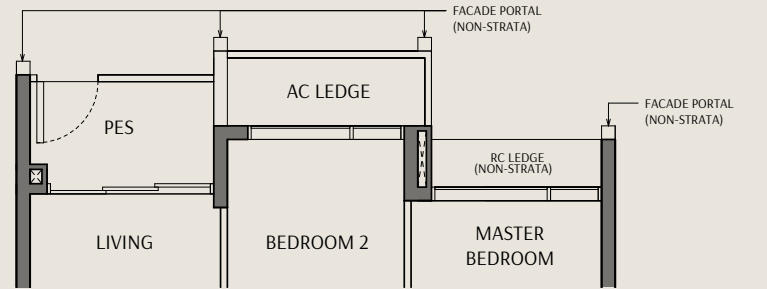


Type B5 (P)

Area: 67 sqm | 721 sqft

Unit(s): #02-13*

#02-20



Legend:

WD	Washer Cum Dryer	ST	Storage
F	Refrigerator	><	Void Space (excluded from strata area)
DB	Distribution Board	■	Wall not allowed to be hacked or altered

*Mirrored Unit

Area includes air conditioner (AC) ledge, balcony, PES and strata void where applicable. RC ledge do not form part of the unit strata area. The above plans are subject to change as may be approved by the relevant authorities. All floor plans are approximate measurements only and are subject to government re-survey. These are for the purpose of visual presentation only. The balcony and PES shall not be enclosed unless with the approved balcony screen. The installation and cost of the screen shall be borne by the purchaser.

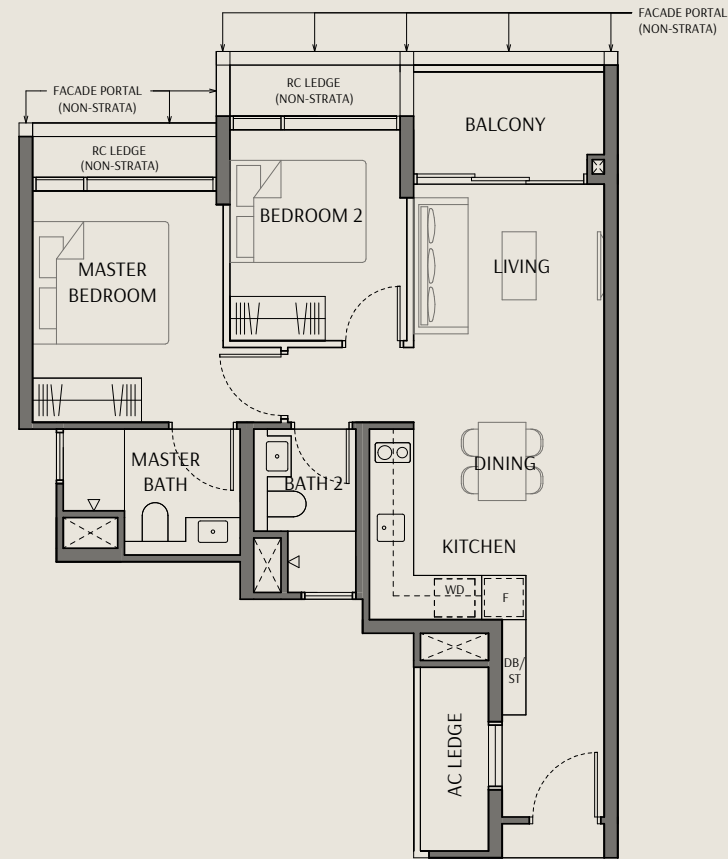


2 Bedroom

Type B6

Area: 67 sqm | 721 sqft

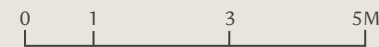
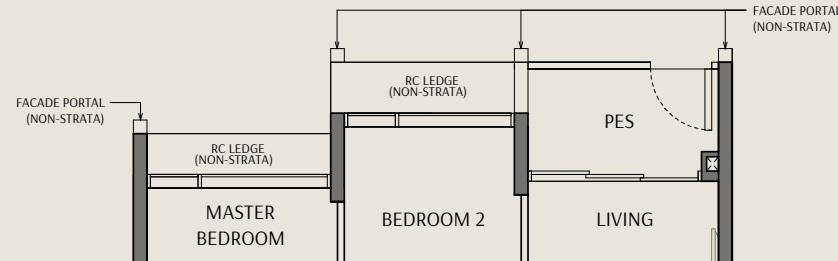
Unit(s): #03-19 to #10-19



Type B6 (P)

Area: 67 sqm | 721 sqft

Unit(s): #02-19



Legend:

WD	Washer Cum Dryer	ST	Storage
F	Refrigerator		Void Space (excluded from strata area)
DB	Distribution Board		Wall not allowed to be hacked or altered

Area includes air conditioner (AC) ledge, balcony, PES and strata void where applicable. RC ledge do not form part of the unit strata area. The above plans are subject to change as may be approved by the relevant authorities. All floor plans are approximate measurements only and are subject to government re-survey. These are for the purpose of visual presentation only. The balcony and PES shall not be enclosed unless with the approved balcony screen. The installation and cost of the screen shall be borne by the purchaser.

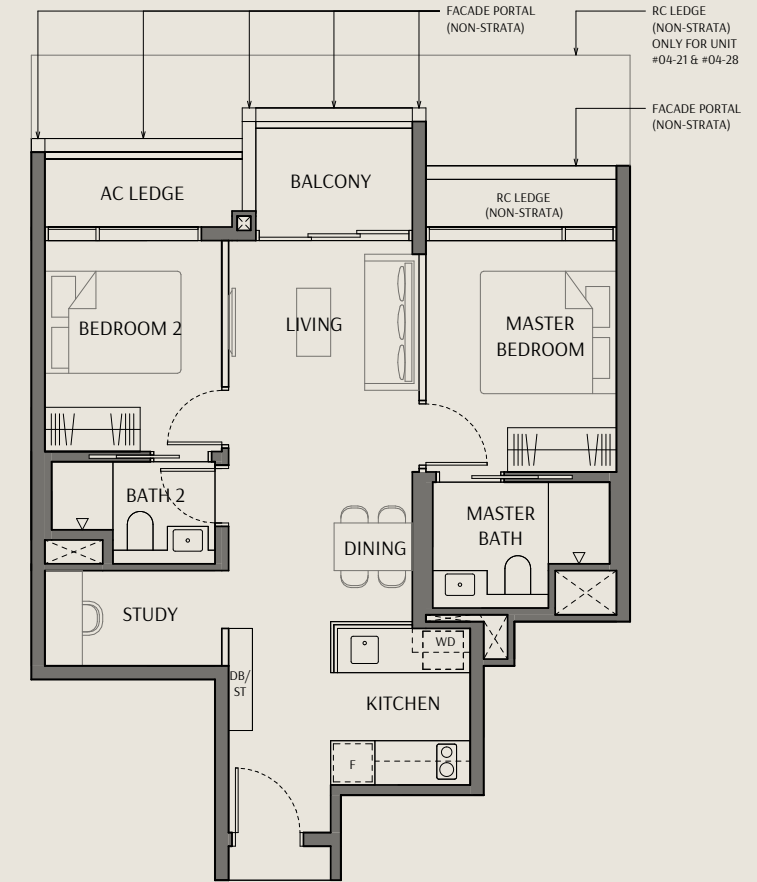


2 Bedroom + Study

Type B7-S

Area: 69 sqm | 743 sqft

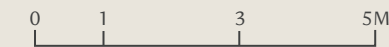
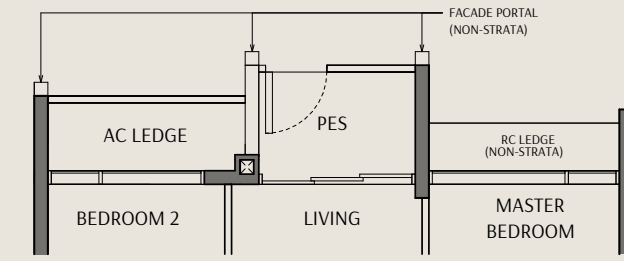
Unit(s): #03-01 to #10-01
 #03-08* to #10-08*
 #04-21 to #10-21
 #04-28* to #10-28*



Type B7-S (P)

Area: 69 sqm | 743 sqft

Unit(s): #02-01
 #02-08*



Legend:

WD	Washer Cum Dryer	ST	Storage
F	Refrigerator		Void Space (excluded from strata area)
DB	Distribution Board		Wall not allowed to be hacked or altered

*Mirrored Unit

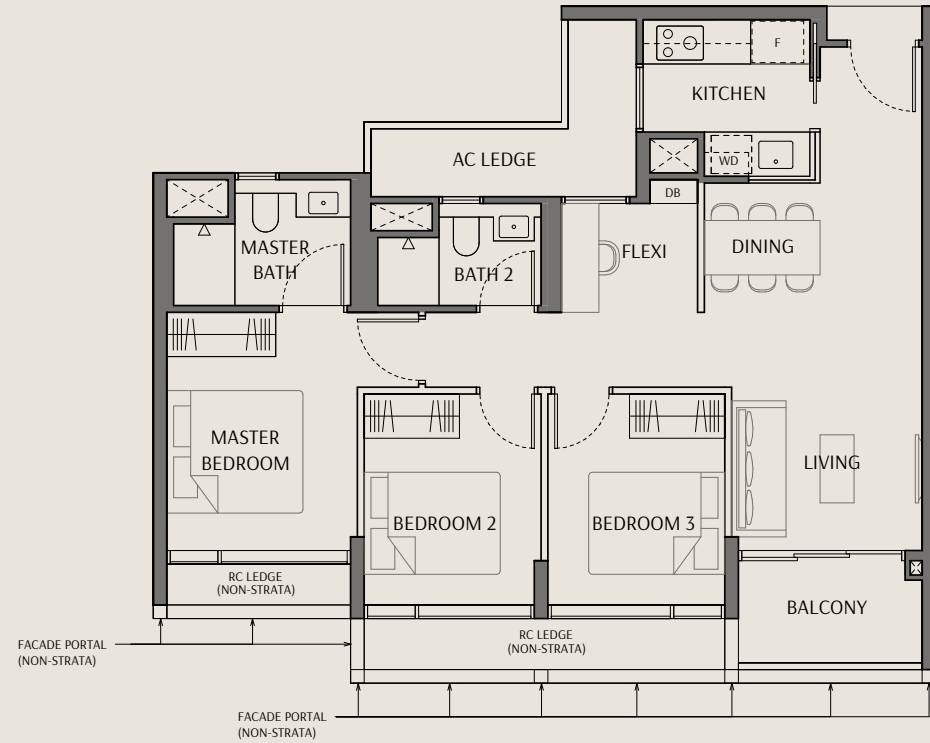
Area includes air conditioner (AC) ledge, balcony, PES and strata void where applicable. RC ledge do not form part of the unit strata area. The above plans are subject to change as may be approved by the relevant authorities. All floor plans are approximate measurements only and are subject to government re-survey. These are for the purpose of visual presentation only. The balcony and PES shall not be enclosed unless with the approved balcony screen. The installation and cost of the screen shall be borne by the purchaser.



3 Bedroom + Flexi

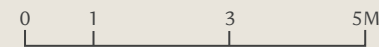
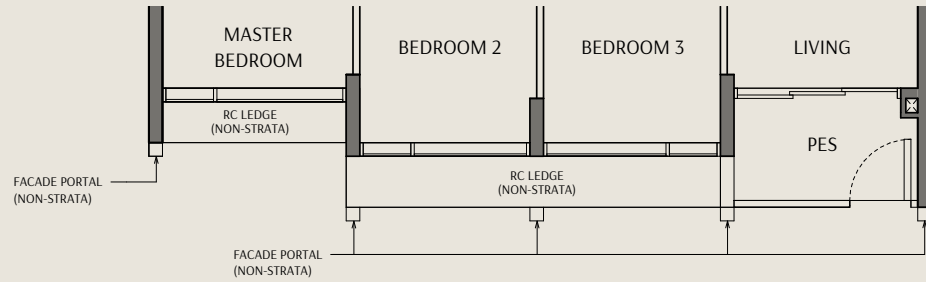
Type C1-S
Area: 86 sqm | 926 sqft

Unit(s): #03-18 to #10-18



Type C1-S (P) Area: 86 sqm | 926 sqft

Unit(s): #02-18



Legend:

- WD Washer Cum Dryer
- F Refrigerator
- DB Distribution Board
- Void Space (excluded from strata area)
- Wall not allowed to be hacked or altered

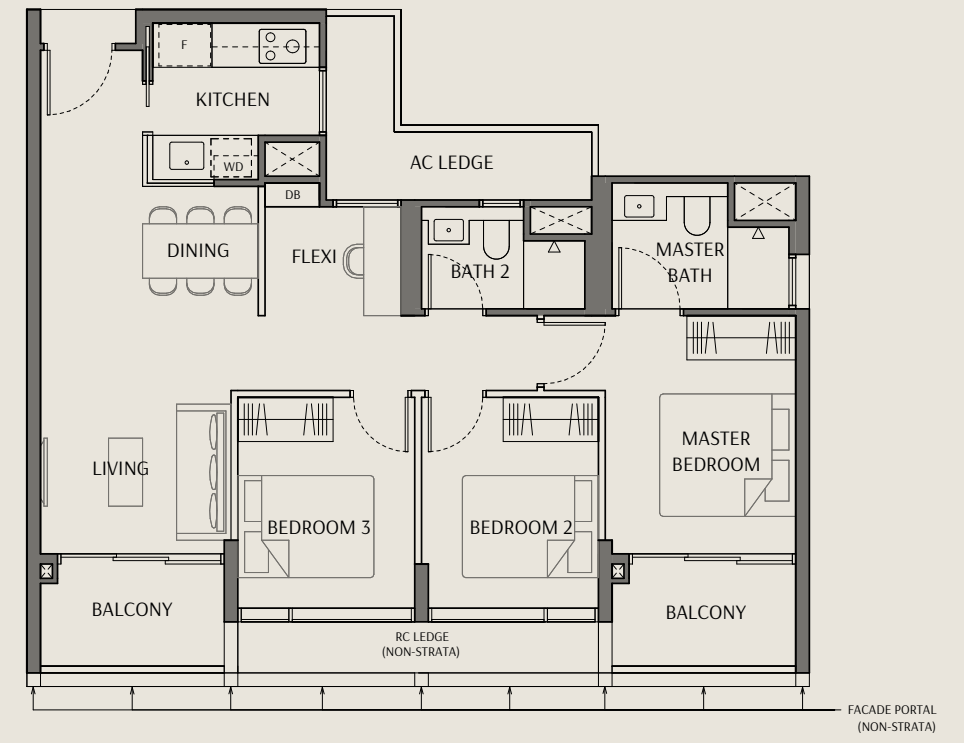
Area includes air conditioner (AC) ledge, balcony, PES and strata void where applicable. RC ledge do not form part of the unit strata area. The above plans are subject to change as may be approved by the relevant authorities. All floor plans are approximate measurements only and are subject to government re-survey. These are for the purpose of visual presentation only. The balcony and PES shall not be enclosed unless with the approved balcony screen. The installation and cost of the screen shall be borne by the purchaser.



3 Bedroom + Flexi

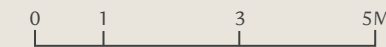
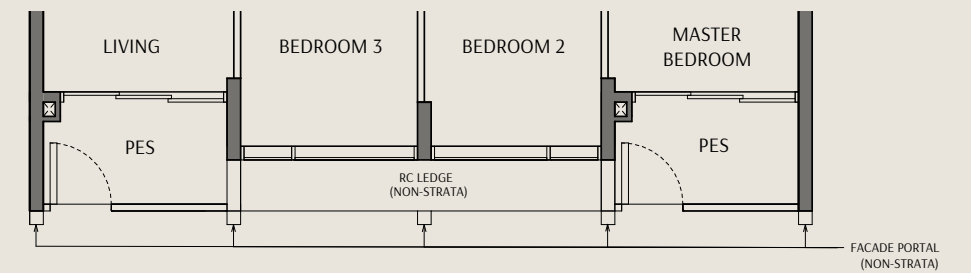
Type C2-S
Area: 91 sqm | 980 sqft

Unit(s): #03-15 to #10-15



Type C2-S (P) Area: 91 sqm | 980 sqft

Unit(s): #02-15



Legend:

- WD Washer Cum Dryer
- F Refrigerator
- DB Distribution Board
- Void Space (excluded from strata area)
- Wall not allowed to be hacked or altered

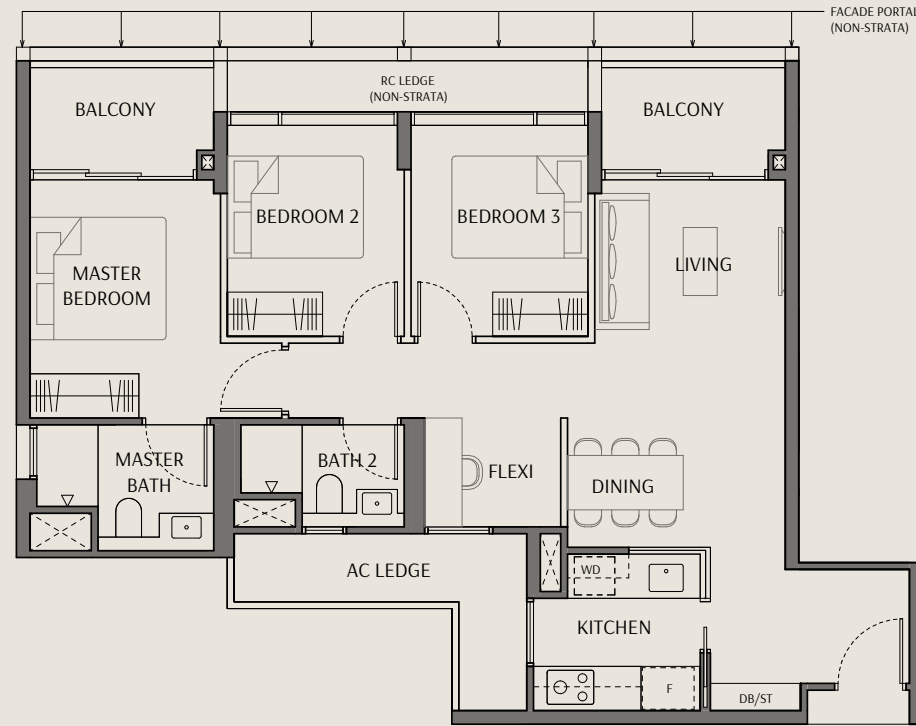
Area includes air conditioner (AC) ledge, balcony, PES and strata void where applicable. RC ledge do not form part of the unit strata area. The above plans are subject to change as may be approved by the relevant authorities. All floor plans are approximate measurements only and are subject to government re-survey. These are for the purpose of visual presentation only. The balcony and PES shall not be enclosed unless with the approved balcony screen. The installation and cost of the screen shall be borne by the purchaser.



3 Bedroom + Flexi

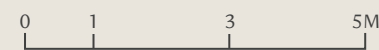
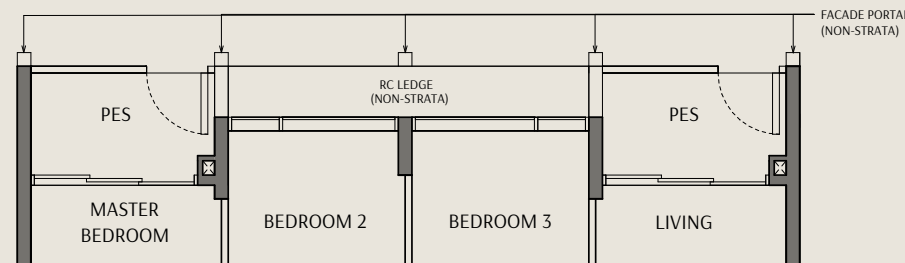
Type C3-S
Area: 94 sqm | 1012 sqft

Unit(s): #03-03 to #10-03



Type C3-S (P)
Area: 94 sqm | 1012 sqft

Unit(s): #02-03



Legend:

- | | | | |
|----|--------------------|----|--|
| WD | Washer Cum Dryer | ST | Storage |
| F | Refrigerator | >< | Void Space (excluded from strata area) |
| DB | Distribution Board | ■ | Wall not allowed to be hacked or altered |

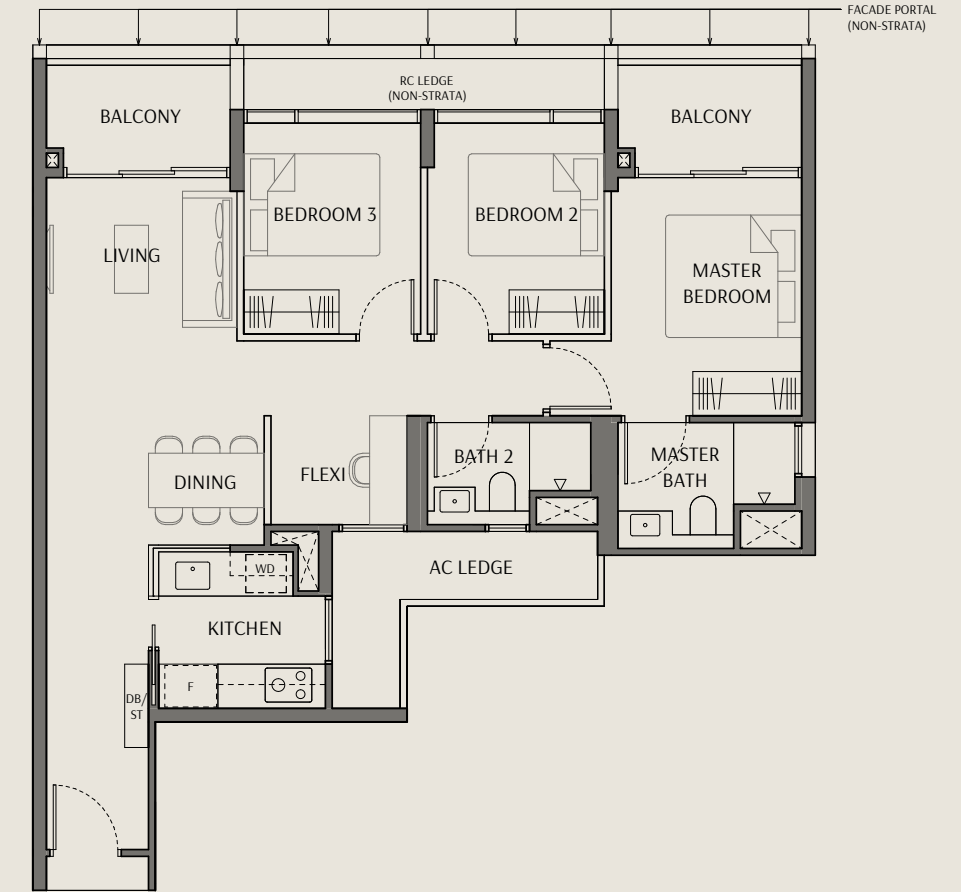
Area includes air conditioner (AC) ledge, balcony, PES and strata void where applicable. RC ledge do not form part of the unit strata area. The above plans are subject to change as may be approved by the relevant authorities. All floor plans are approximate measurements only and are subject to government re-survey. These are for the purpose of visual presentation only. The balcony and PES shall not be enclosed unless with the approved balcony screen. The installation and cost of the screen shall be borne by the purchaser.



3 Bedroom + Flexi

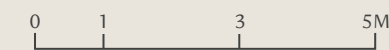
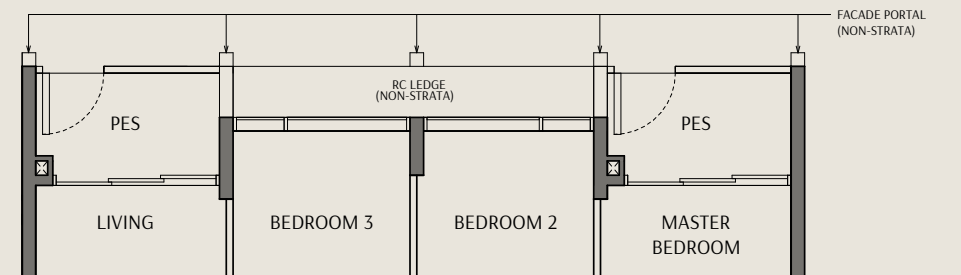
Type C4-S
Area: 95 sqm | 1023 sqft

Unit(s): #03-14 to #10-14



Type C4-S (P)
Area: 95 sqm | 1023 sqft

Unit(s): #02-14



Legend:

- | | | | |
|----|--------------------|----|--|
| WD | Washer Cum Dryer | ST | Storage |
| F | Refrigerator | >< | Void Space (excluded from strata area) |
| DB | Distribution Board | ■ | Wall not allowed to be hacked or altered |

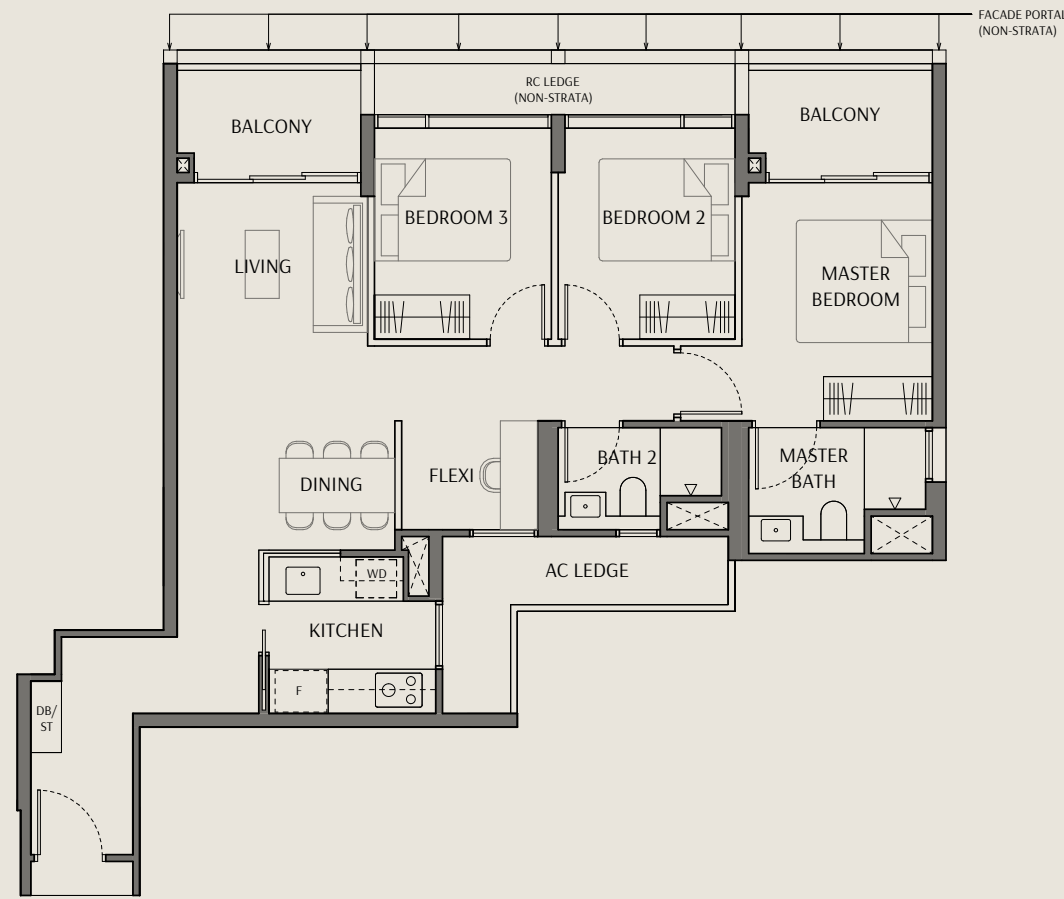
Area includes air conditioner (AC) ledge, balcony, PES and strata void where applicable. RC ledge do not form part of the unit strata area. The above plans are subject to change as may be approved by the relevant authorities. All floor plans are approximate measurements only and are subject to government re-survey. These are for the purpose of visual presentation only. The balcony and PES shall not be enclosed unless with the approved balcony screen. The installation and cost of the screen shall be borne by the purchaser.



3 Bedroom + Flexi

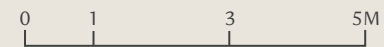
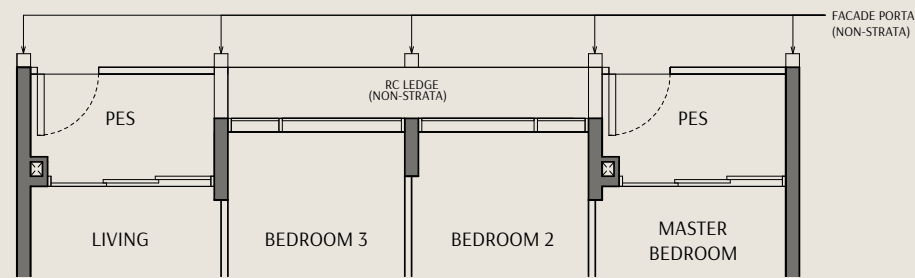
Type C5-S
Area: 97 sqm | 1044 sqft

Unit(s): #03-02 to #10-02



Type C5-S (P)
Area: 97 sqm | 1044 sqft

Unit(s): #02-02



Legend:

- | | | | |
|----|--------------------|----|--|
| WD | Washer Cum Dryer | ST | Storage |
| F | Refrigerator | >< | Void Space (excluded from strata area) |
| DB | Distribution Board | ■ | Wall not allowed to be hacked or altered |

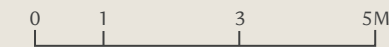
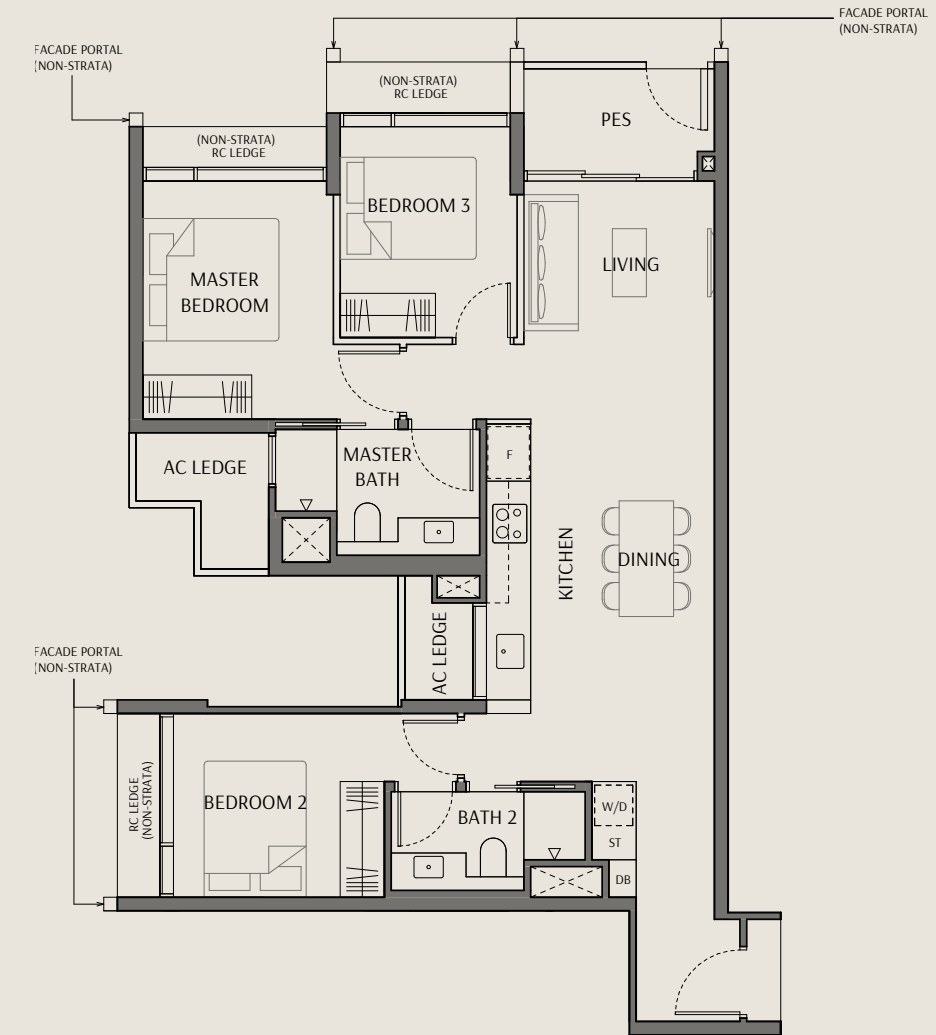
Area includes air conditioner (AC) ledge, balcony, PES and strata void where applicable. RC ledge do not form part of the unit strata area. The above plans are subject to change as may be approved by the relevant authorities. All floor plans are approximate measurements only and are subject to government re-survey. These are for the purpose of visual presentation only. The balcony and PES shall not be enclosed unless with the approved balcony screen. The installation and cost of the screen shall be borne by the purchaser.



3 Bedroom Duoflex

Type C6 (P)
Area: 92 sqm | 990 sqft

Unit(s): #02-06



Legend:

- | | | | |
|-----|--------------------|----|--|
| W/D | Washer and Dryer | ST | Storage |
| F | Refrigerator | >< | Void Space (excluded from strata area) |
| DB | Distribution Board | ■ | Wall not allowed to be hacked or altered |

Area includes air conditioner (AC) ledge, balcony, PES and strata void where applicable. RC ledge do not form part of the unit strata area. The above plans are subject to change as may be approved by the relevant authorities. All floor plans are approximate measurements only and are subject to government re-survey. These are for the purpose of visual presentation only. The balcony and PES shall not be enclosed unless with the approved balcony screen. The installation and cost of the screen shall be borne by the purchaser.



3 Bedroom Duoflex

Type C6

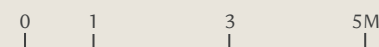
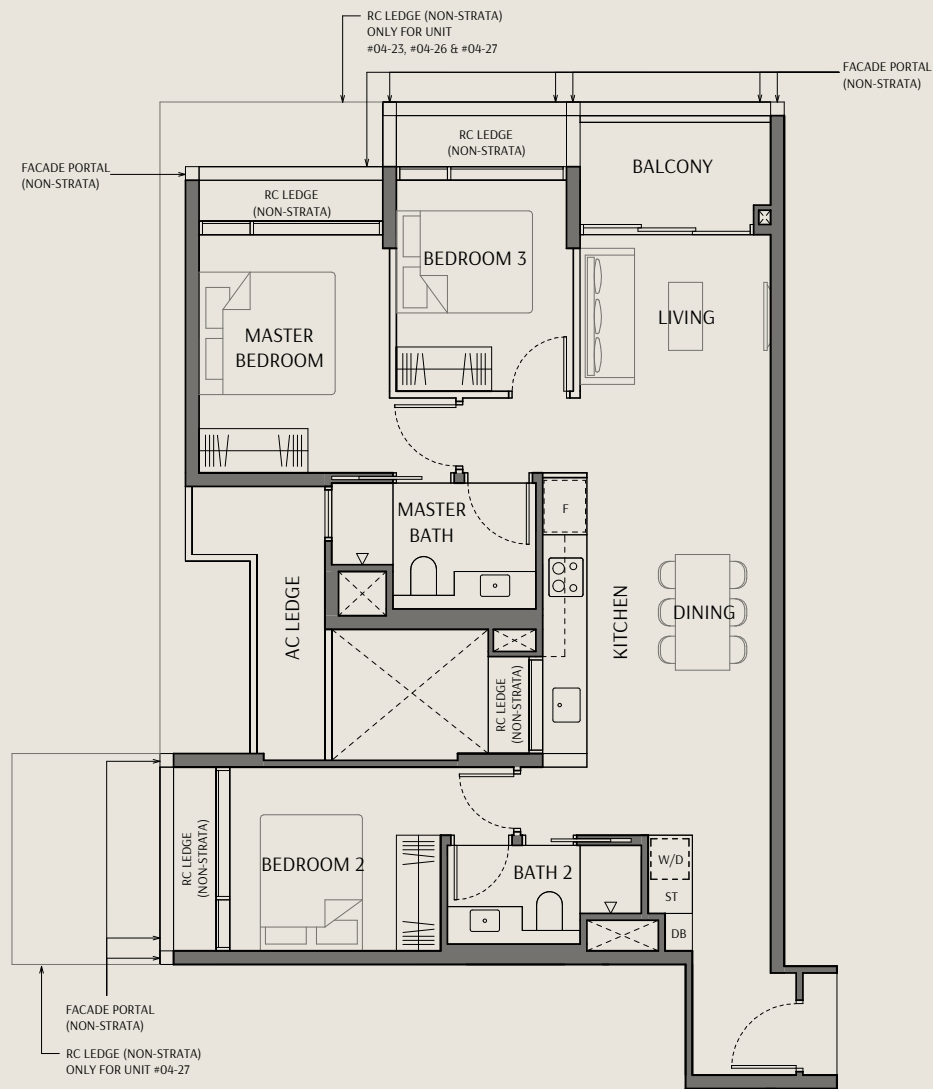
Area: 92 sqm | 990 sqft

Unit(s): #03-06 to #10-06

#04-23* to #10-23*

#04-26 to #10-26

#04-27* to #10-27*



Legend:

- W/D Washer and Dryer
- F Refrigerator
- DB Distribution Board
- *Mirrored Unit
- ST Storage
- Void Space (excluded from strata area)
- Wall not allowed to be hacked or altered

Area includes air conditioner (AC) ledge, balcony, PES and strata void where applicable. RC ledge do not form part of the unit strata area. The above plans are subject to change as may be approved by the relevant authorities. All floor plans are approximate measurements only and are subject to government re-survey. These are for the purpose of visual presentation only. The balcony and PES shall not be enclosed unless with the approved balcony screen. The installation and cost of the screen shall be borne by the purchaser.

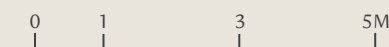
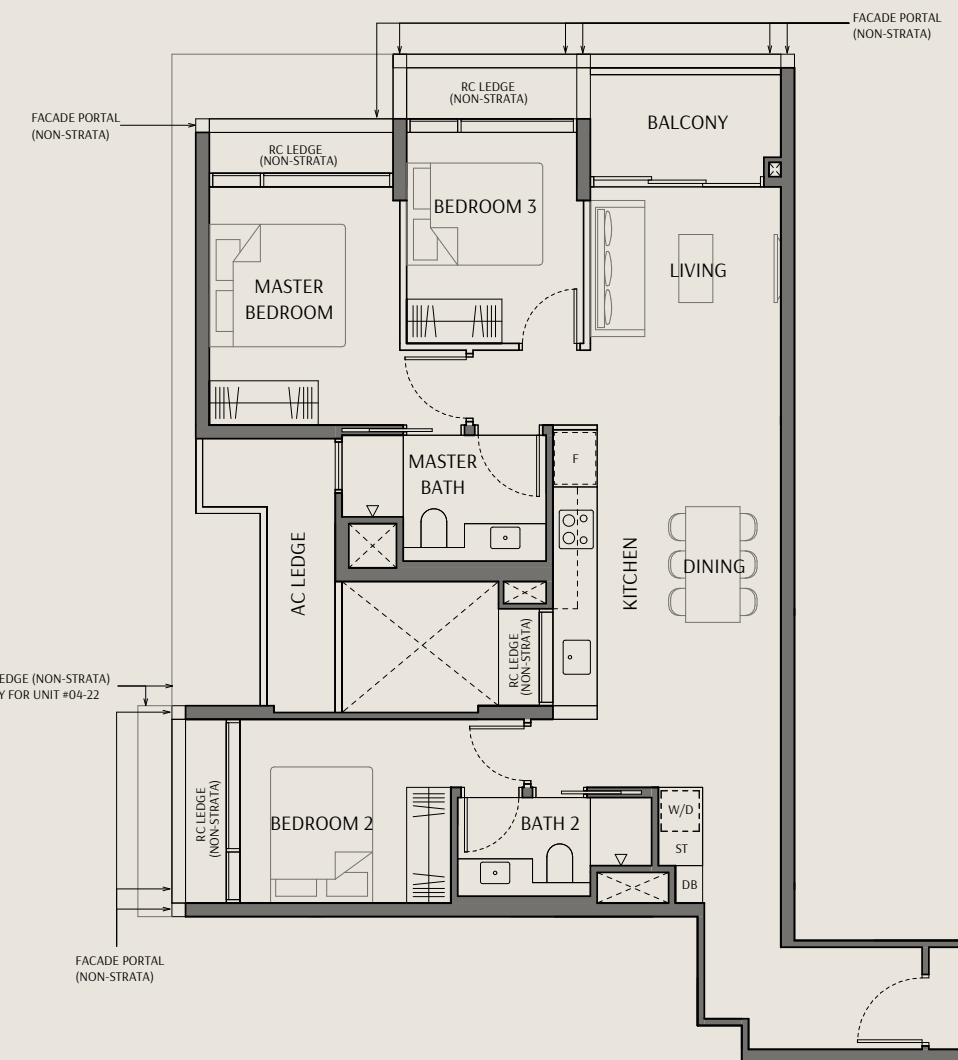


3 Bedroom Duoflex

Type C7

Area: 95 sqm | 1023 sqft

Unit(s): #04-22 to #10-22



Legend:

- W/D Washer and Dryer
- F Refrigerator
- DB Distribution Board
- ST Storage
- Void Space (excluded from strata area)
- Wall not allowed to be hacked or altered

Area includes air conditioner (AC) ledge, balcony, PES and strata void where applicable. RC ledge do not form part of the unit strata area. The above plans are subject to change as may be approved by the relevant authorities. All floor plans are approximate measurements only and are subject to government re-survey. These are for the purpose of visual presentation only. The balcony and PES shall not be enclosed unless with the approved balcony screen. The installation and cost of the screen shall be borne by the purchaser.





Legacy Collection

3 BEDROOM PREMIUM
& 4 BEDROOM PREMIUM

Perfect for families, the Legacy Collection's 3 Bedroom Premium and 4 Bedroom Premium homes embody quiet luxury. Ernestomeda kitchens, V-ZUG appliances, and Rimadesio sliding doors anchor each suite in refined European craft, while marble-finish surfaces, tinted glass carpentry, and engineered wood floors add warmth and depth to a light, airy palette. Spacious balconies accentuate the sense of openness, creating a tranquil sanctuary where beauty, heritage, and legacy converge — a masterpiece to be cherished and passed down through generations.

3 Bedroom Premium Show Unit
For Illustration Purposes Only

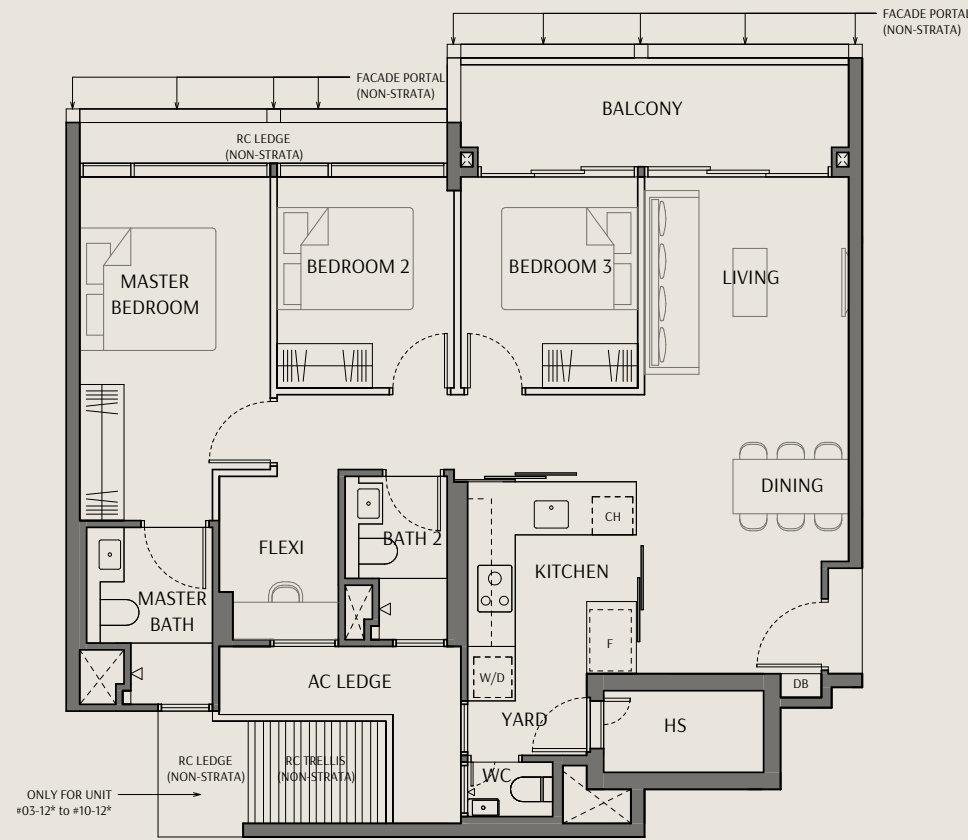
3 Bedroom Premium

Type C1-P

Area: 107 sqm | 1152 sqft

Unit(s): #03-11 to #10-11

#03-12* to #10-12*

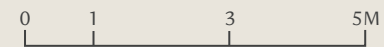
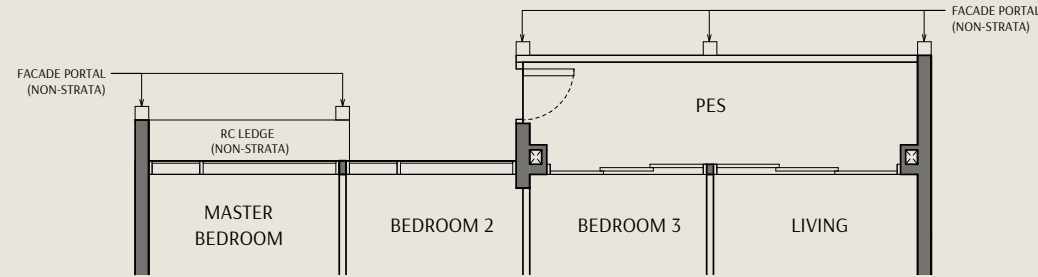


Type C1-P (P)

Area: 107 sqm | 1152 sqft

Unit(s): #02-11

#02-12*



Legend:

- HS Household Shelter
- W/D Washer and Dryer
- F Refrigerator
- *Mirrored Unit
- CH Wine Chiller
- DB Distribution Board
- Void Space (excluded from strata area)
- Wall not allowed to be hacked or altered

Area includes air conditioner (AC) ledge, balcony, PES and strata void where applicable. RC ledge do not form part of the unit strata area. The above plans are subject to change as may be approved by the relevant authorities. All floor plans are approximate measurements only and are subject to government re-survey. These are for the purpose of visual presentation only. The balcony and PES shall not be enclosed unless with the approved balcony screen. The installation and cost of the screen shall be borne by the purchaser.

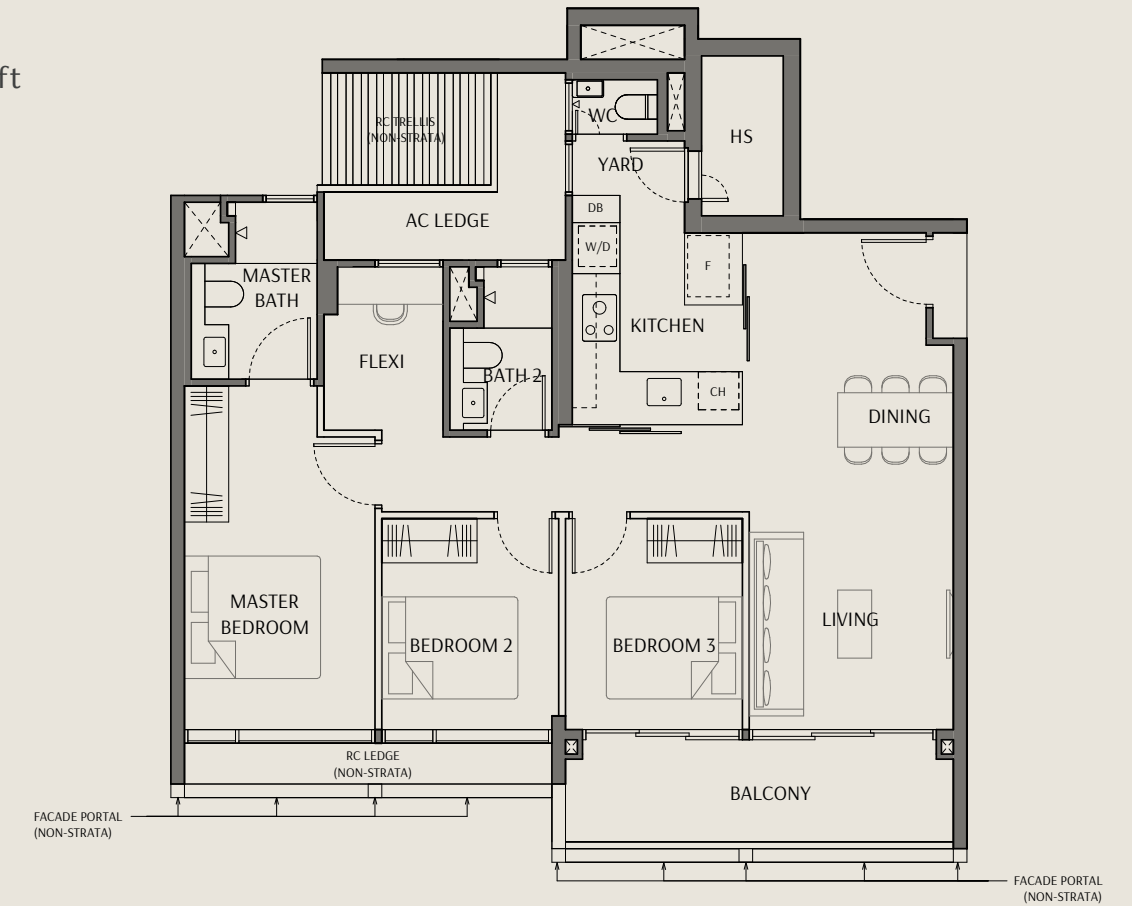


3 Bedroom Premium

Type C2-P

Area: 107 sqm | 1152 sqft

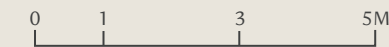
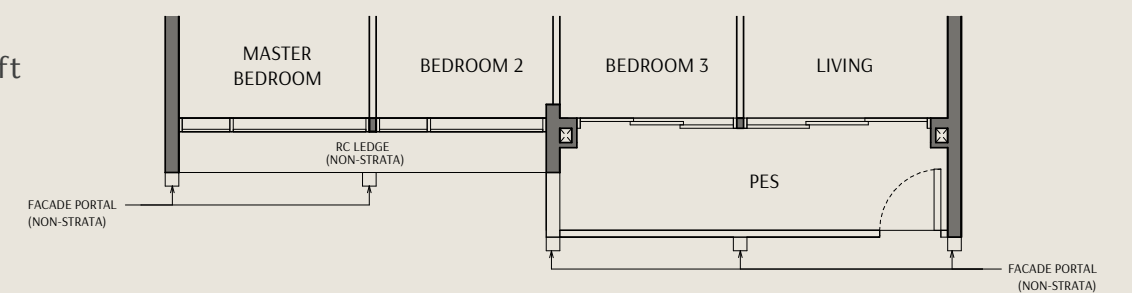
Unit(s): #03-10 to #10-10



Type C2-P (P)

Area: 107 sqm | 1152 sqft

Unit(s): #02-10



Legend:

- HS Household Shelter
- W/D Washer and Dryer
- F Refrigerator
- CH Wine Chiller
- DB Distribution Board
- Void Space (excluded from strata area)
- Wall not allowed to be hacked or altered

Area includes air conditioner (AC) ledge, balcony, PES and strata void where applicable. RC ledge do not form part of the unit strata area. The above plans are subject to change as may be approved by the relevant authorities. All floor plans are approximate measurements only and are subject to government re-survey. These are for the purpose of visual presentation only. The balcony and PES shall not be enclosed unless with the approved balcony screen. The installation and cost of the screen shall be borne by the purchaser.

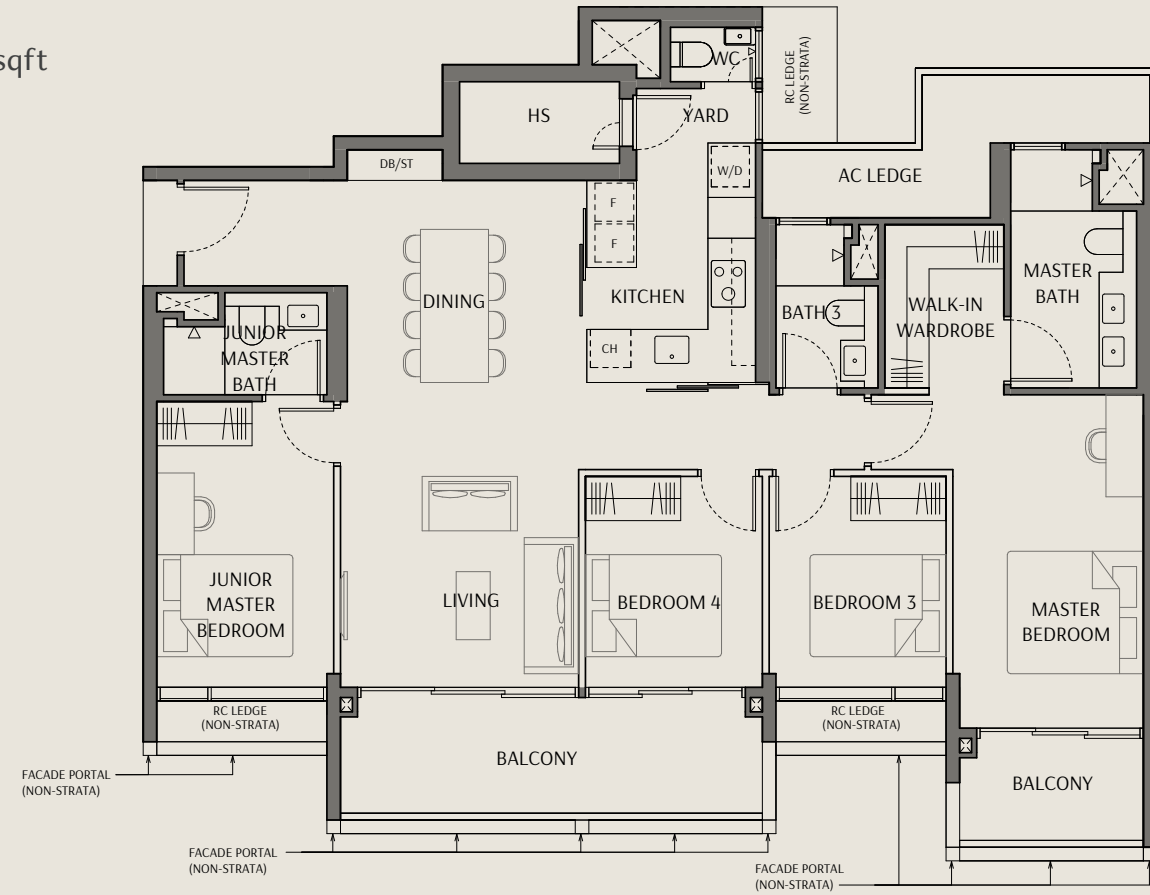


4 Bedroom Premium

Type D1-P

Area: 143 sqm | 1539 sqft

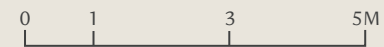
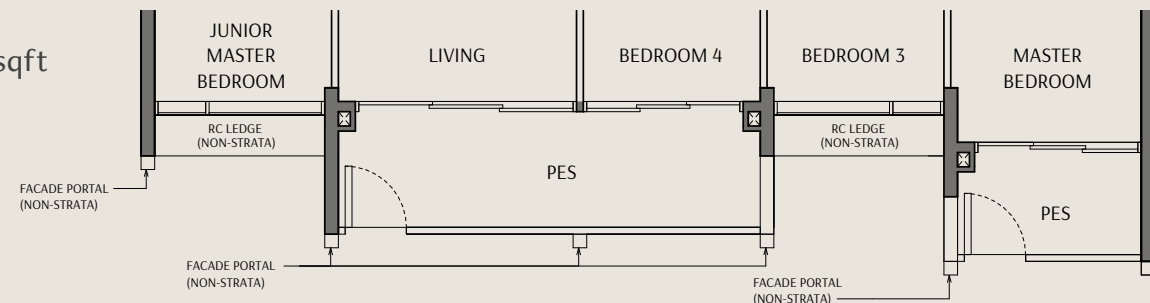
Unit(s): #03-09 to #10-09



Type D1-P (P)

Area: 143 sqm | 1539 sqft

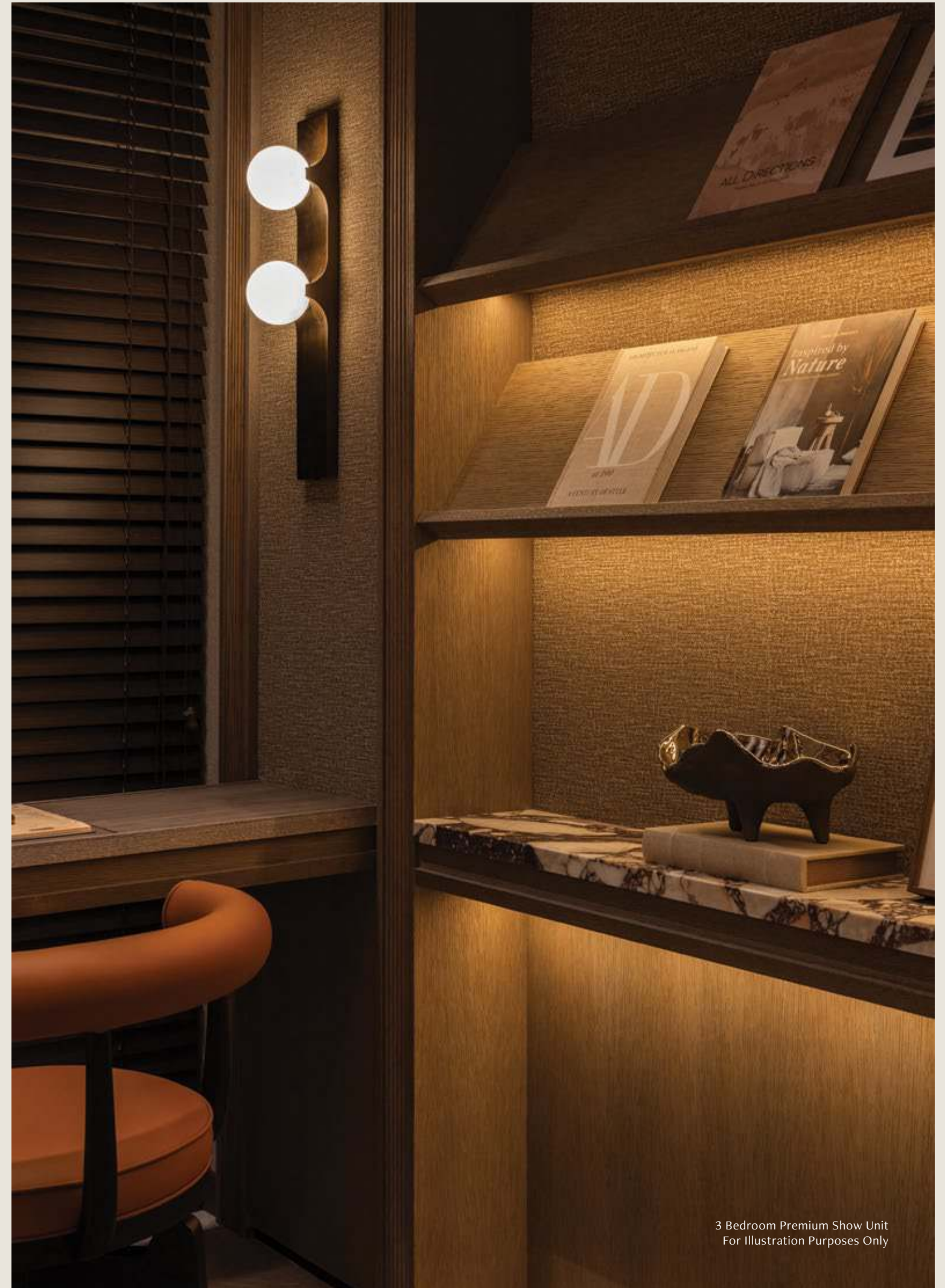
Unit(s): #02-09



Legend:

- HS Household Shelter
- W/D Washer and Dryer
- F Refrigerator
- ST Storage
- CH Wine Chiller
- DB Distribution Board
- Void Space (excluded from strata area)
- Wall not allowed to be hacked or altered

Area includes air conditioner (AC) ledge, balcony, PES and strata void where applicable. RC ledge do not form part of the unit strata area. The above plans are subject to change as may be approved by the relevant authorities. All floor plans are approximate measurements only and are subject to government re-survey. These are for the purpose of visual presentation only. The balcony and PES shall not be enclosed unless with the approved balcony screen. The installation and cost of the screen shall be borne by the purchaser.



3 Bedroom Premium Show Unit
For Illustration Purposes Only

Smart Home System

Experience effortless comfort and peace of mind with a fully connected home. From remote doorbell alerts and digital lock access to climate control, smoke detection, and real-time energy insights, every feature is designed for seamless living — welcome to the future of intuitive, secure home management.



Wi-Fi Doorbell

Get notified the instant someone arrives at your door, and view and speak with visitors securely.



Digital Lockset

Enjoy the convenience of remotely locking and unlocking your door via PIN, biometrics, key, or access tag.



Energy Monitoring

Track your household energy usage in real time to support sustainable habits.



Air Conditioning

Activate your air conditioning remotely so your home is cool and comfortable the moment you walk in.



Smoke Detector

Receive instant alerts in the event of smoke, giving you time to investigate or call for help when no one is home.

Smart Community App

Elevate your residential lifestyle with a unified mobile platform. Pre-register guests, manage visitor access, book shared facilities, and open your letterbox — all with the Smart Community App. It's the ultimate companion for modern community living, where convenience meets connectivity.



Smart Invite

Pre-register guests and generate a QR code to grant them easy access to the development.



Smart Audio Video Intercom System

Receive visitor notifications on your mobile device and grant entry remotely.



Smart Booking

Check availability and reserve facilities and spaces directly through the mobile app.



Keyless Letterbox

Retrieve your letters via access card — no more fumbling for keys.



For Illustration Purposes Only



For Illustration Purposes Only

Top-of-the-Line Fittings

The range of appliances and fittings at The Robertson Opus has been thoughtfully curated to offer you the utmost assurance and an exceptional quality of life. Combining premium materials with cutting-edge technology, these distinguished brands are synonymous with innovation, design excellence, and a lasting commitment to sustainability.

*Rimadesio, Ernestomeda and Axor fitting only available in legacy unit

AXOR • **hansgrohe** Rimadesio ernestomeda

DURAVIT

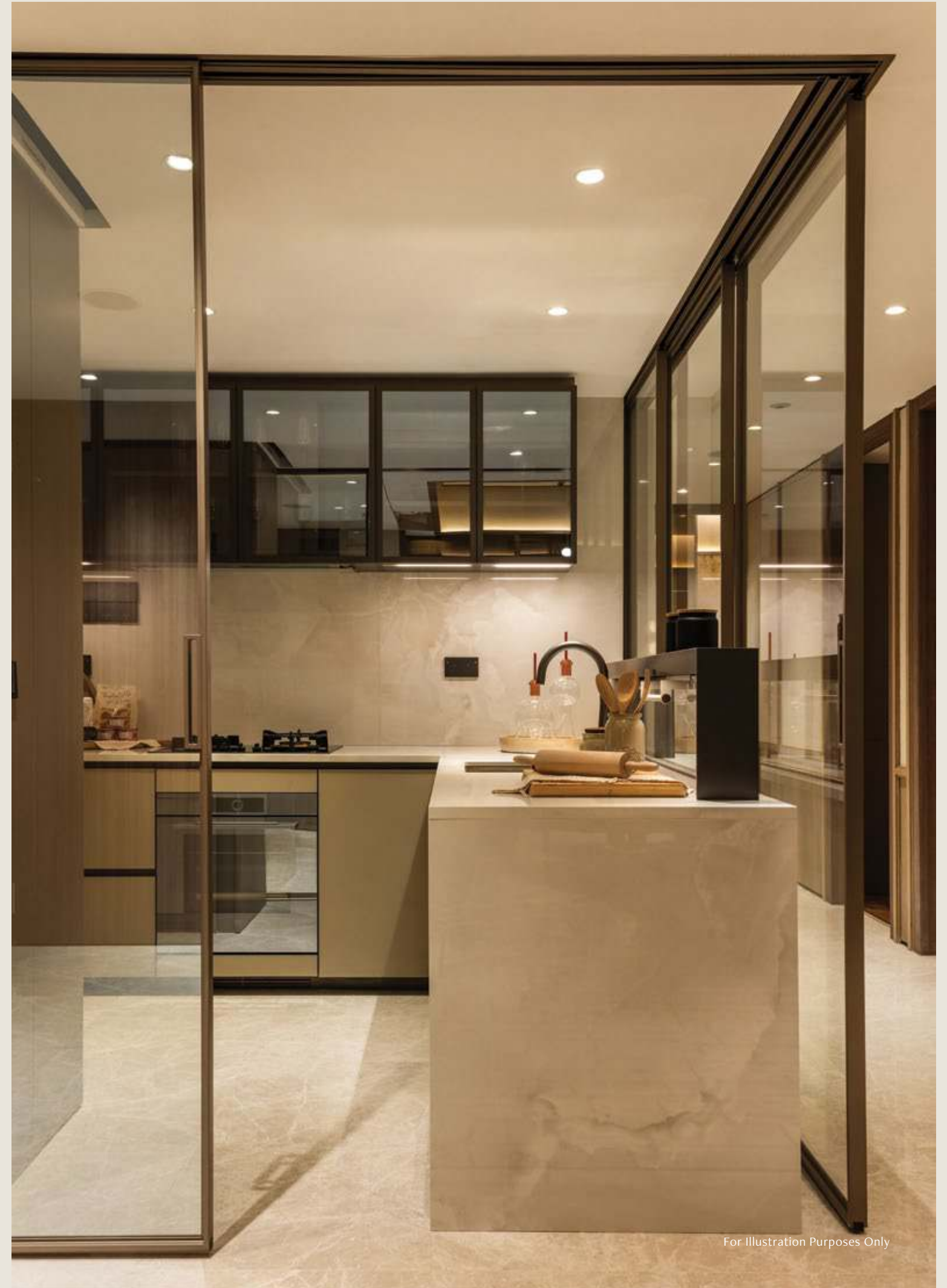
LIEBHERR



For Illustration Purposes Only



For Illustration Purposes Only



For Illustration Purposes Only



Artist's Impression

Building Sustainably, For Generations Ahead

The Robertson Opus is a collaboration between partners who share a common goal: to take a long-term, purpose-driven approach to sustainability — and to design places that are better for people, the community, and the environment.

At The Robertson Opus, this vision comes to life through energy-efficient systems, environmentally conscious materials, and thoughtful design that reduces carbon emissions while introducing more greenery than ever before. Native tree species and plants that attract birds and butterflies are carefully integrated into the landscape, creating a lush, nature-positive environment within the city. With a strong focus on comfort, wellbeing, and resilience, The Robertson Opus is built not just for today — but for generations to come.



Living in Harmony with Nature

- Over 3,800 sqm of greenery across the development, including a 240m-long continuous walk through the Sky Forest that links rooftops via sky bridges
- Over 200 new trees and more than 2,000 new shrubs to be planted, including over 40 species of native and regional plants
- Immersive greenery that provides natural shade and cools the environment
- Gardens that create habitats, support biodiversity, and attract wildlife such as butterflies and birds
- Layered vertical planting and cascading vertical gardens to reduce Urban Heat Island (UHI) effect



Intelligent by Nature

- Smart energy metering in units and common areas
- Energy-efficient air-conditioning and dryers
- Solar panels help power shared facilities and reduce energy use
- Motion and demand sensors for lighting and ventilation in community spaces
- EV charging stations and bicycle parking to support low-emissions living



Wellness Begins at Home

- Natural ventilation for residential lobbies above the second level
- Low-Volatile Organic Compound (VOC) paints and adhesives for healthier indoor air
- Tranquil green spaces thoughtfully designed for relaxation and mental wellness
- Social spaces — from pavilions and a community garden to Opus Club — offer opportunities for interaction among residents
- Inclusive access thoughtfully designed across all community spaces



Shaped by Wind, Light and Shade

- Recognised with a BCA GoldPlus rating for reducing solar heat gain through thoughtful facade design
- Designed with airflow in mind for cooler, naturally ventilated interiors
- Shaded balconies and trellises reduce heat and keep interiors cooler

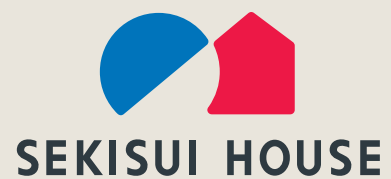
Redefining World-Class Luxury Living

With over a century of combined real estate expertise, Frasers Property and Sekisui House mark their longstanding partnership with The Robertson Opus — a world-class integrated waterfront residential and lifestyle destination in Singapore’s coveted District 9. Designed to redefine opulence and sophistication, The Robertson Opus exemplifies the synergy between two leading developers, backed by the excellence of their portfolios.

Since 2011, Frasers Property and Sekisui House have delivered notable residential and mixed-use projects across Singapore and Australia, setting benchmarks for sustainable, timeless, and thoughtful design.



Frasers Property is a multinational investor-developer-manager with a diverse portfolio spanning commercial and business parks, hospitality, industrial and logistics, residential and retail. Operating across Southeast Asia, Australia, the EU, the UK and China, its hospitality arm owns and/or operates serviced apartments and hotels in 20 countries. Committed to inspiring experiences and creating places for good, Frasers Property has a strong track record in development management and expertise, having delivered more than 130,000 homes across geographies, including over 23,000 quality homes in Singapore alone.



Sekisui House, one of Japan’s largest homebuilders, has built more than 2.7 million homes globally since 1960. Renowned for its integrated real estate and construction expertise, it builds lasting communities guided by its “Love of Humanity” philosophy — designing homes that offer comfort, security and harmony with the environment. It has expanded into several markets and now operates in the United States, Australia and Singapore.



One Bangkok, Thailand



Rivière, Singapore



Joint Venture Development by Sekisui House and Partner Companies

Grand Green Osaka, Japan
Artist's Impression



One89 Wireless, Thailand
Artist's Impression



Grand Green Osaka
The North Residence, Japan
Artist's Impression

